

DANISH MINISTRY OF THE ENVIRONMENT
National Survey and Cadastre

MAPS, GEODATA AND SPATIAL INFRASTRUCTURE

Problems:

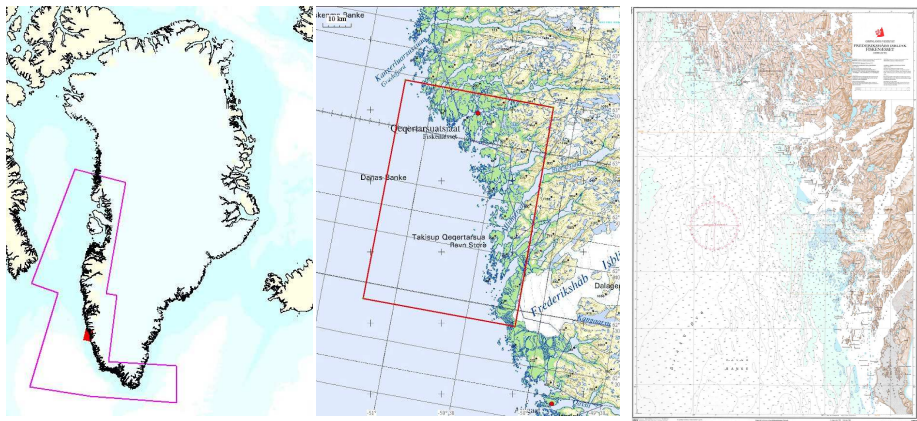
- Use of GPS
- Use of electronic-chart systems
- Increased tourism
- Inshore sailing
- Climate change

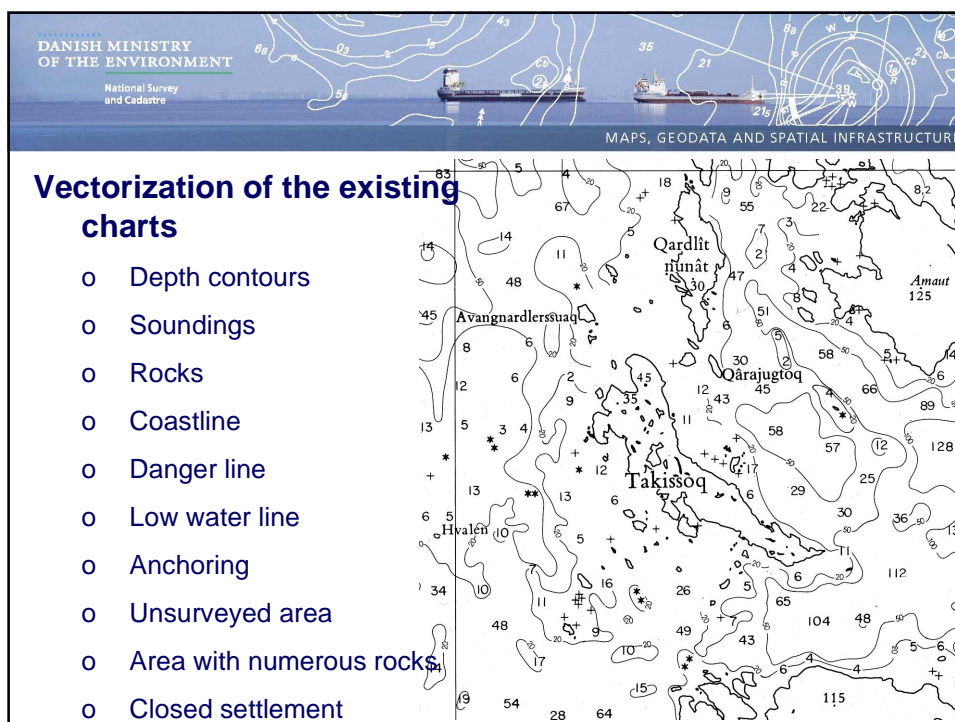
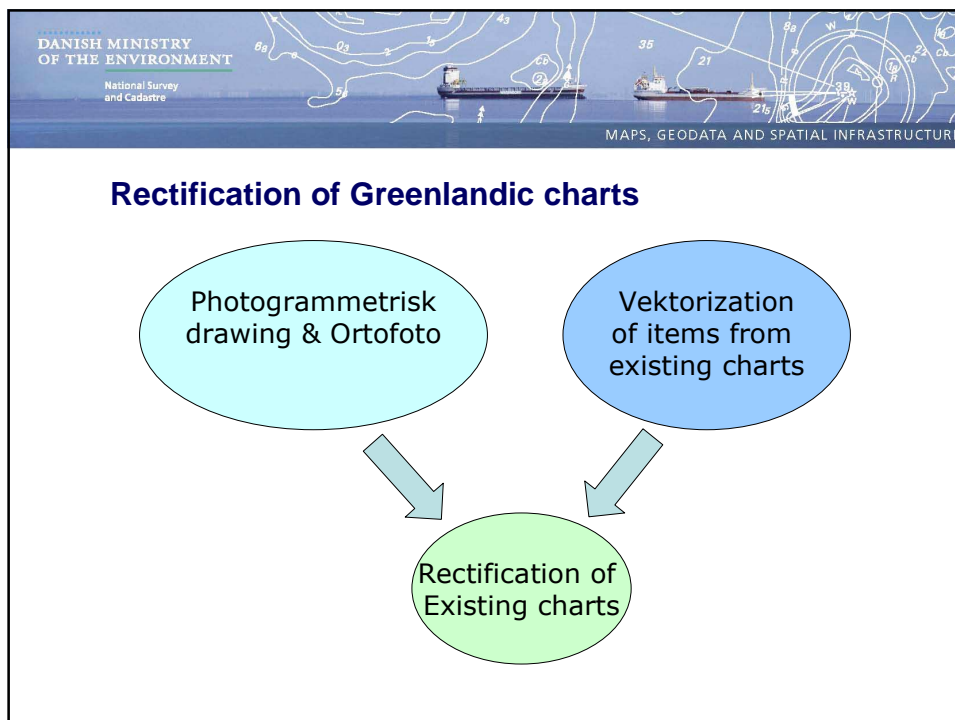


DANISH MINISTRY OF THE ENVIRONMENT
National Survey and Cadastre

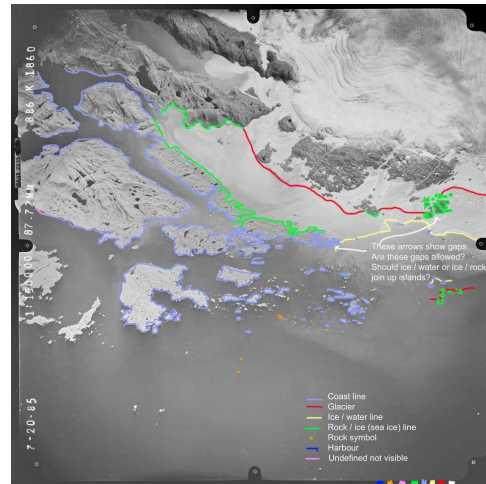
MAPS, GEODATA AND SPATIAL INFRASTRUCTURE

The Area covering 65 charts

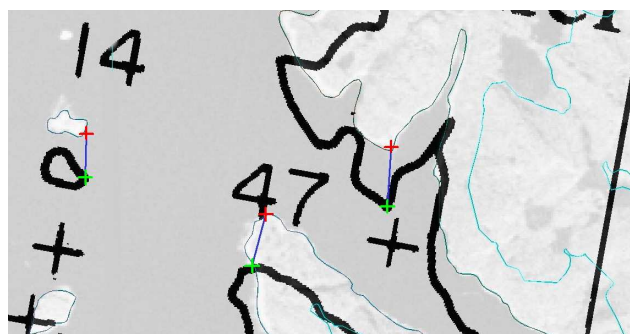




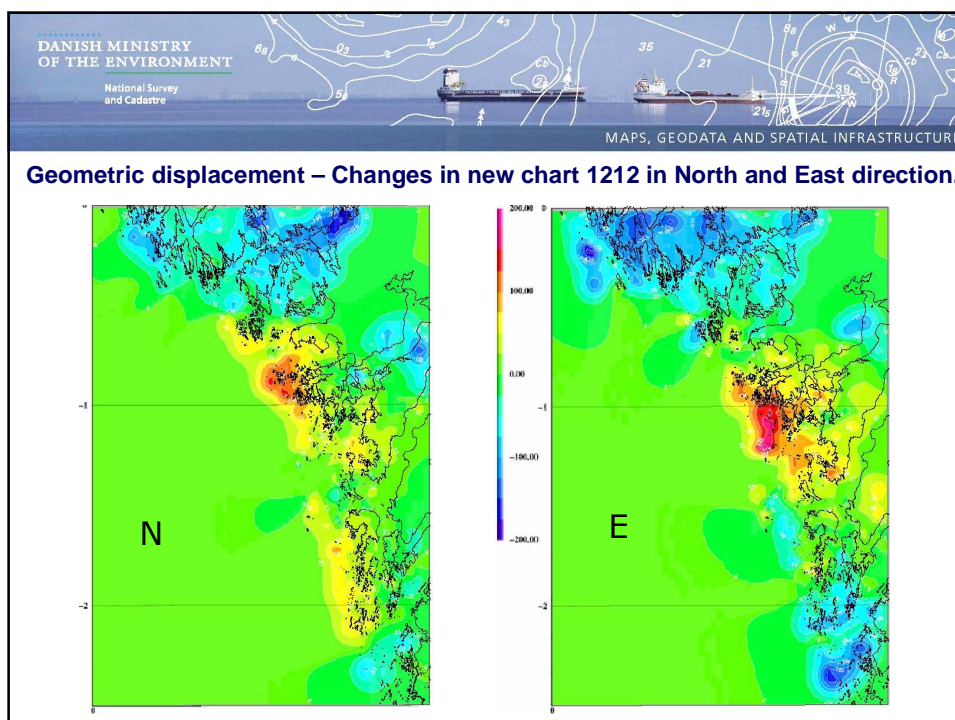
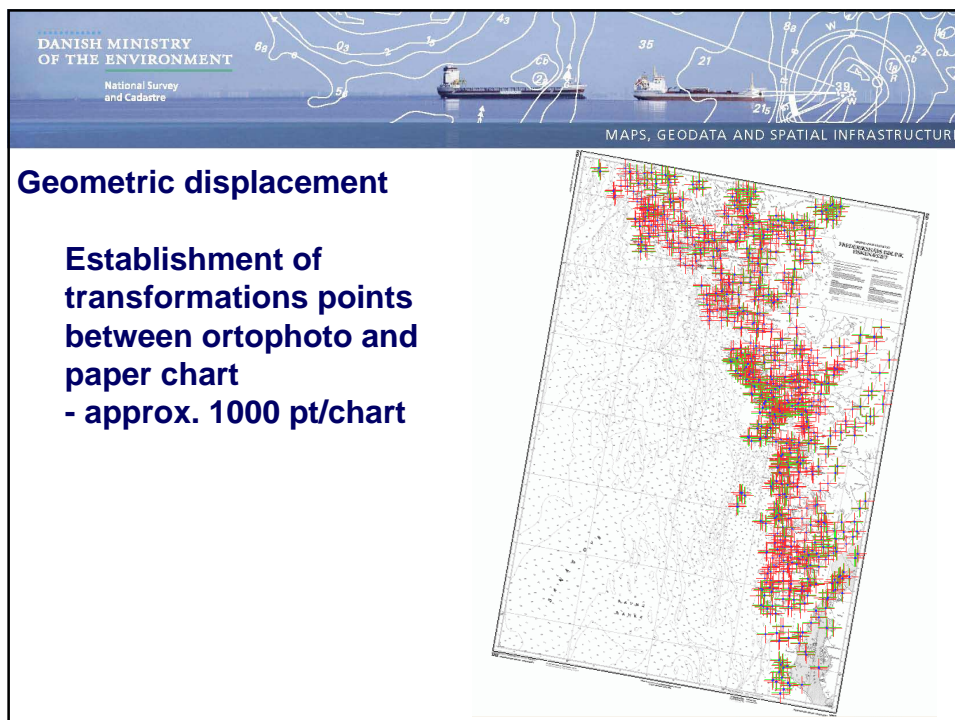
Contour lines (25m), 100 DHM grid



Establishment of transformations points between ortophoto and paper chart



Green : Scanned paper chart



DANISH MINISTRY OF THE ENVIRONMENT
National Survey and Cadastre

MAPS, GEODATA AND SPATIAL INFRASTRUCTURE

- Coastline
- Rocks (FRV)
- Depth contours
- Soundings
- Place name in new Greenlandic spelling
- Buoys, Beacons
- New surveys
- Contours, spot heights
- Limits
- Technical maps (Asiaq)
- Rivers & lakes (GEUS)

Production of a new chart 1212

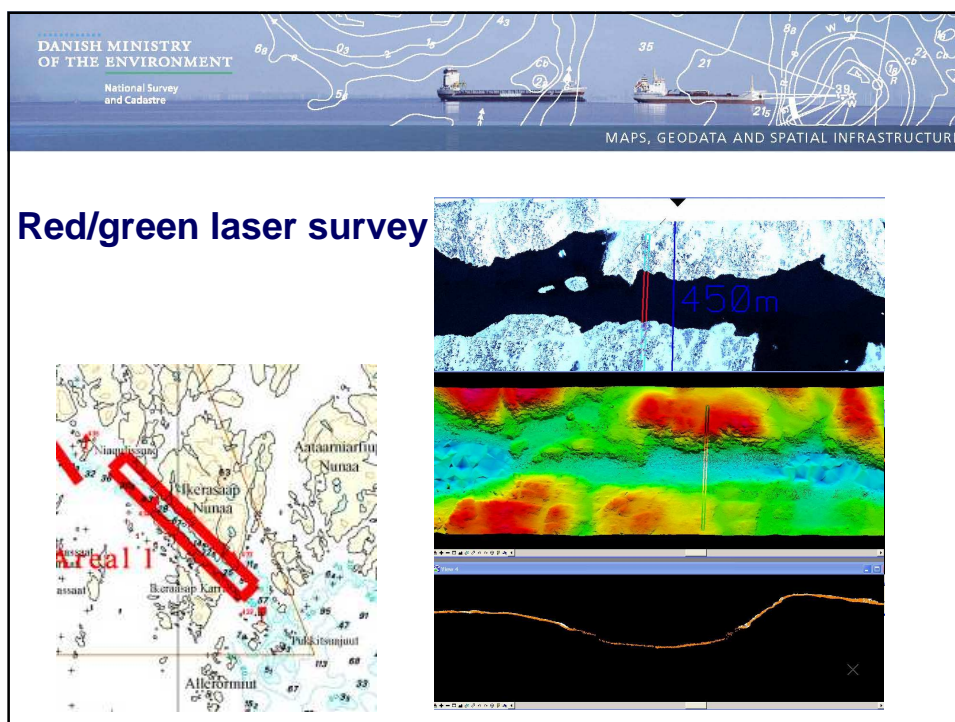
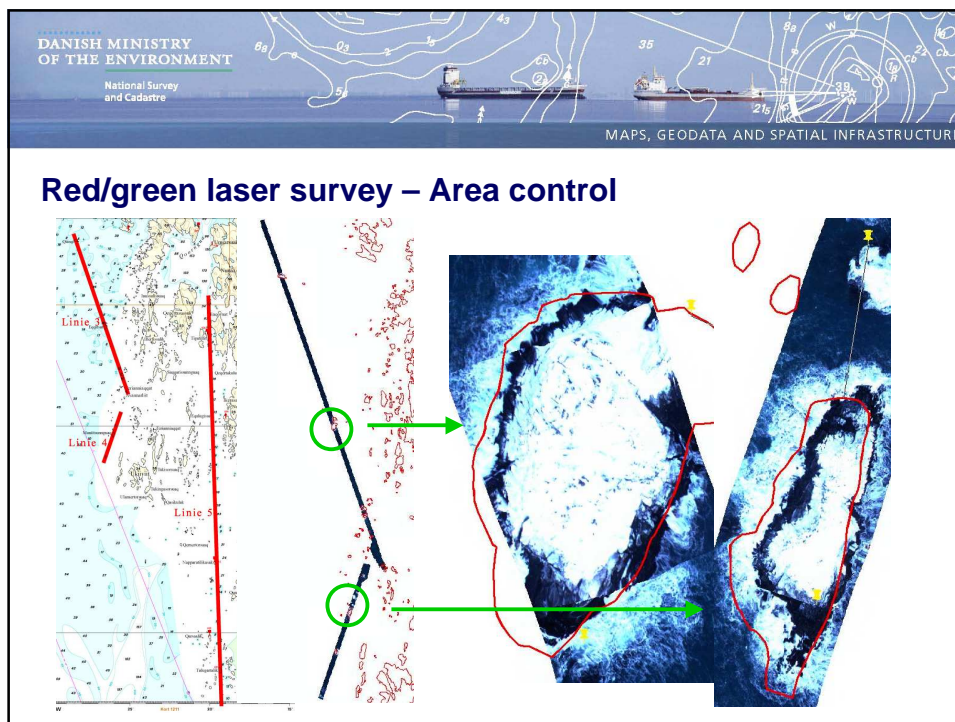
Data verification
Data merging

The new chart 1212

DANISH MINISTRY OF THE ENVIRONMENT
National Survey and Cadastre

MAPS, GEODATA AND SPATIAL INFRASTRUCTURE

Trials with red/green laser survey – 21. Dec. 2007



Areas in the project

Purpose: Rectification of 65 charts

- Chart 1212: 1. quarter of 2008
- 5 charts in 2008
- The rest in 2009 – 2011?

