



**FIG/IHO/ICA International Board on standards of Competence
for Hydrographic surveyors and Nautical Cartographers
38th Meeting
Niterói-Brasil
23 March - 02 April 2015**

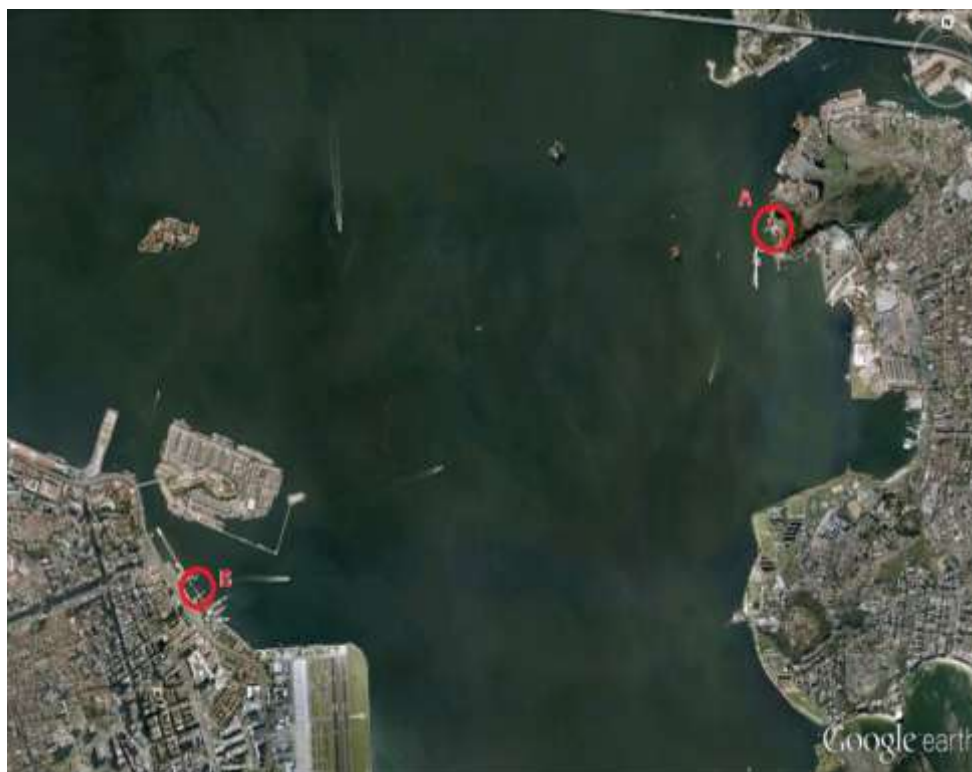
Logistic Details

Location: The meeting will be held at the DHN located in Niteroi (Rio de Janeiro).

- 1) The address of the meeting place is:
Directorate of Hydrography and Navigation (DHN)
(Diretoria de Hidrografia e Navegação)
Barão de Jaceguay, s/n
Ponta da Armação
24048-900 Niteroi-RJ
Brazil

5) **Locations** (Map in the next page):

A - DHN: Lat 22° 52,991'S, Lon 43° 08,048'W
B - 1st Naval District: Lat 22° 53,878'S, Lon 43° 10,589'W



ENDRERÇO DO CHM: RUA BARÃO DE JACEGUÁI, S/N, PONTA DA ARMAÇÃO , NITERÓI



2) **DHN Point of Contact:**

Miss Bruna Pinheiro
int.rel@dhn.mar.mil.br
Phone: +55 (21) 2189-3014

3) **Accommodation in Niterói:**

Meeting participants are expected to arrange their own accommodation.

We have made a block booking at some Niterói Hotels which are near to DHN, the venue of the meeting. **Please make your reservation no later than 10th March.**

After making the reservation, please use the attached reservation form for us to know where You are staying, Arrival and Departure time..

H Niterói Hotel

<http://hneroi.com.br/hotel/home/>



Icaraí Praia Hotel

<http://www.icaraipraiahotel.com.br>



Tower Hotel

<http://www.towerhotel.com.br>



- a) DHN will provide transportation from the airport to the three above hotels in Niterói
- b) Every day at 08:15 am a bus will depart from the hotels in Niterói to the DHN

4) **Lunch during meeting days:** DHN will offer lunch in the meeting days.

5) **City information:** An overview about Rio de Janeiro city may be seen at:

<http://br.youtube.com/watch?v=EQ3GOVycA7M>

6) **Passports and Visas**

All meeting participants should check well in advance whether you need a visa to enter Brasil. It is strongly recommended that you apply for your visa well in advance. If you need a letter of invitation to

support your visa application, please contact us on the email address above. Please provide your full

name on your passport, nationality, date of birth, job title and passport number.

7) **Plug type**

The electrical plug is Europe compliant, Electricity is 120 V, 60 Hz.

8) **Internet**

Wireless LAN service is planned in the meeting room.

9) **Climate**

In Rio de Janeiro March/April is autumn season, temperatures ranging from an average low of 20°C to an average high of 35°C, mostly sunny.