

# COORDINATED, HARMONIZED OR JOINT SUBMISSIONS TO THE COMMISSION ON THE LIMITS OF THE CONTINENTAL SHELF

Alain Murphy  
GeoLimits Consulting  
[www.geolimits.com](http://www.geolimits.com)  
[alain.murphy@gmail.com](mailto:alain.murphy@gmail.com)



# OUTLINE



- Introduction
- Partial Submissions
- Overlapping Submissions
- Coordinated Submissions
- Harmonised Submissions
- Joint Submissions
- Discussion and Implications

# Introduction



- 10 Year Deadline for Submission to the Commission on the Limits of the Continental Shelf
- Many areas of continental shelf beyond 200M are disputed or have unresolved boundaries
- This presents difficulties in meeting the 10 Year Deadline
- How can this be resolved?

# Introduction (cont..)



- The CLCS will not consider submissions that are the subject of a dispute
- Possibility to resolve disputes within the 10 Year Deadline unlikely
- CLCS has provided a number of options for coastal States' submissions in their Rules of Procedure

# Submission Options



- Partial Submission – Submissions made for a portion of the entire continental shelf of a coastal State
- Overlapping Submission – Submissions made by two or more coastal States for the same area of continental shelf with prior agreement
- Coordinated Submission – Submissions made with specific areas of mutual interest
- Harmonised Submission – Submission made with considerable shared technical characteristics
- Joint Submission – Single Submission made by two or more coastal States

# Partial Submissions

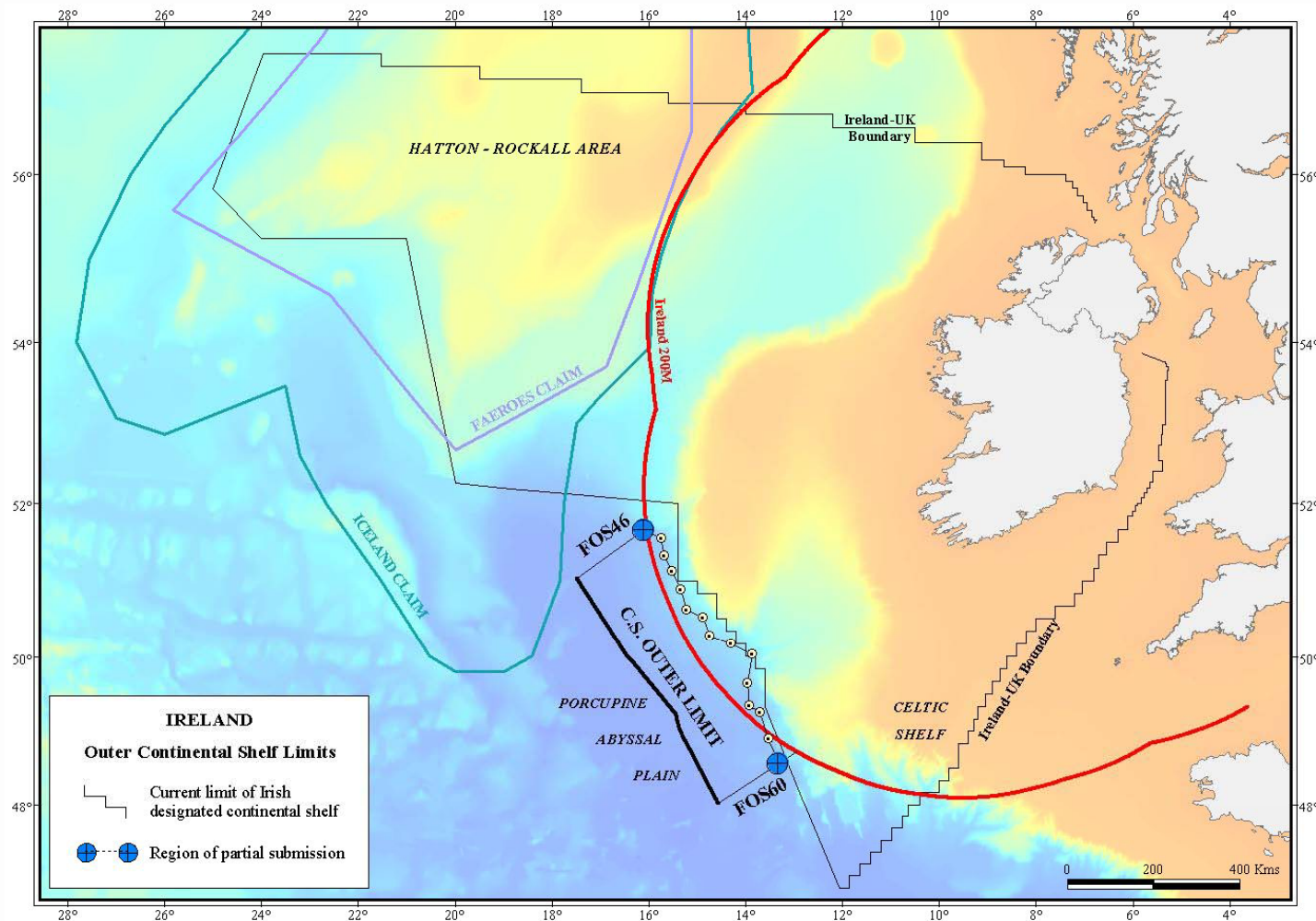


- Submission for a region where there is an absence of disputes
- Agreement may be required with neighbouring States

# Partial Submissions



- Irish Partial Submission 2005



# Partial Submissions



- Begins the process of making a submission for the entire continental shelf
- Allows some breathing room for negotiations on disputed areas while a portion of the continental shelf is being considered by the CLCS.
- Ten year deadline?
- Defers consideration of disputed areas to a later stage



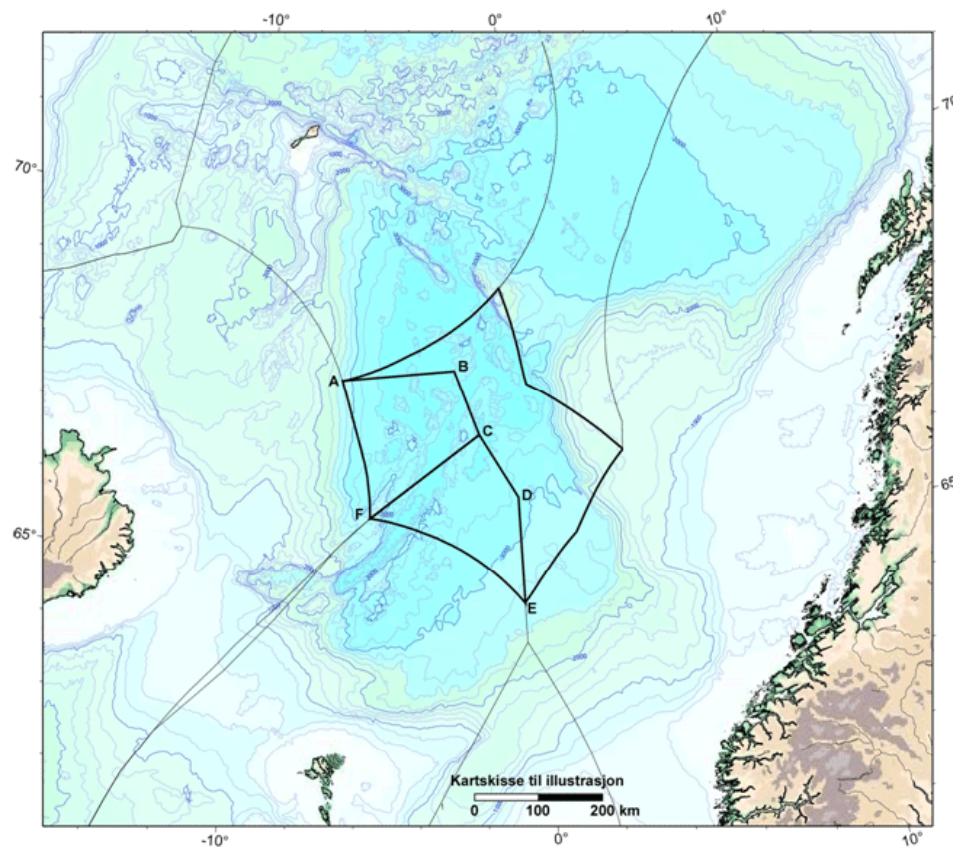
# Overlapping Submissions

---

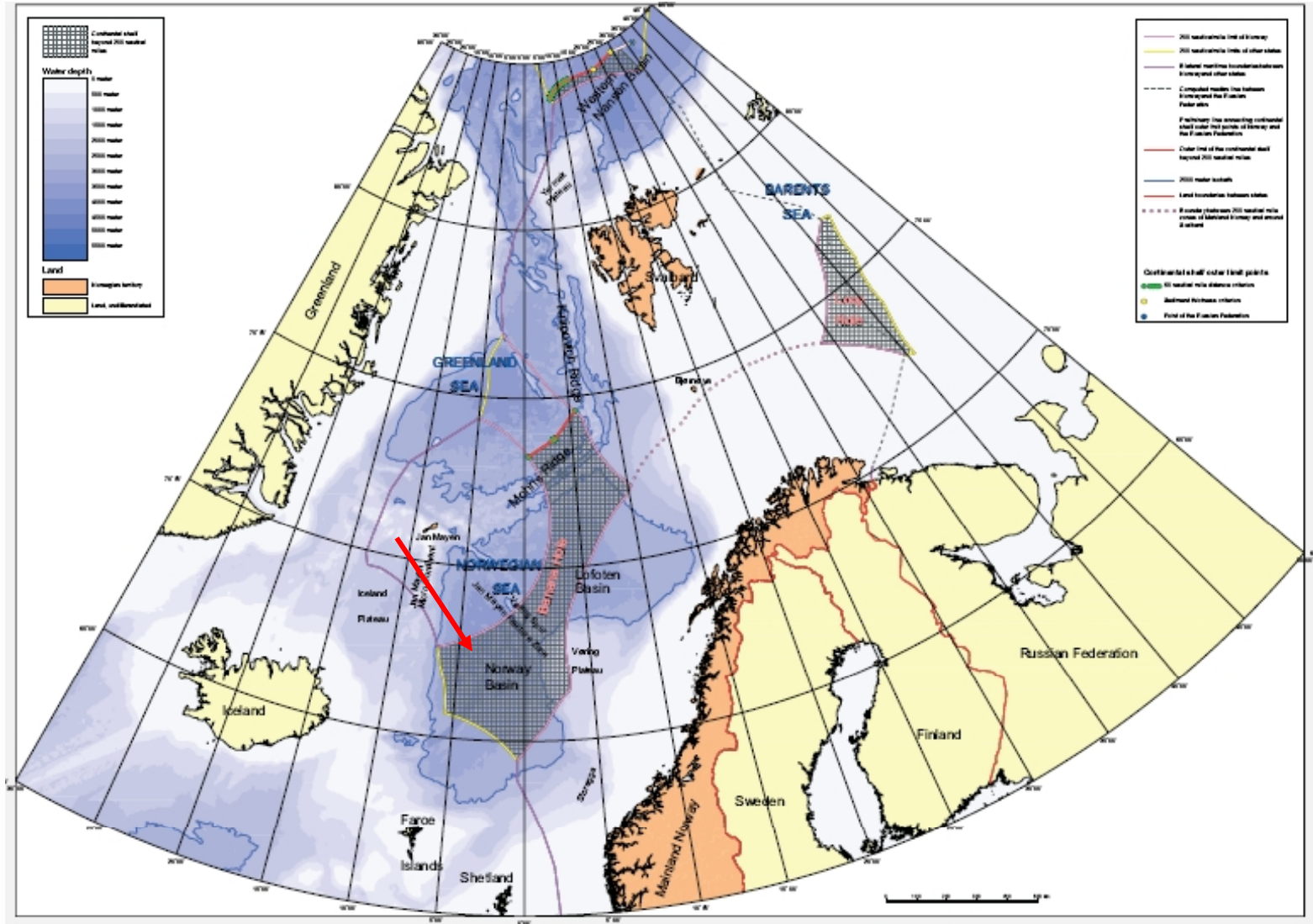


- Overlapping submissions with prior agreement of States involved
- No necessity for technical cooperation
- Agreement regarding delimitation of the continental shelf may come before or after the Recommendations of the CLCS

# Norway-Iceland- Denmark/Faroe Islands Agreement



# Norway Submission



# Coordinated Submission



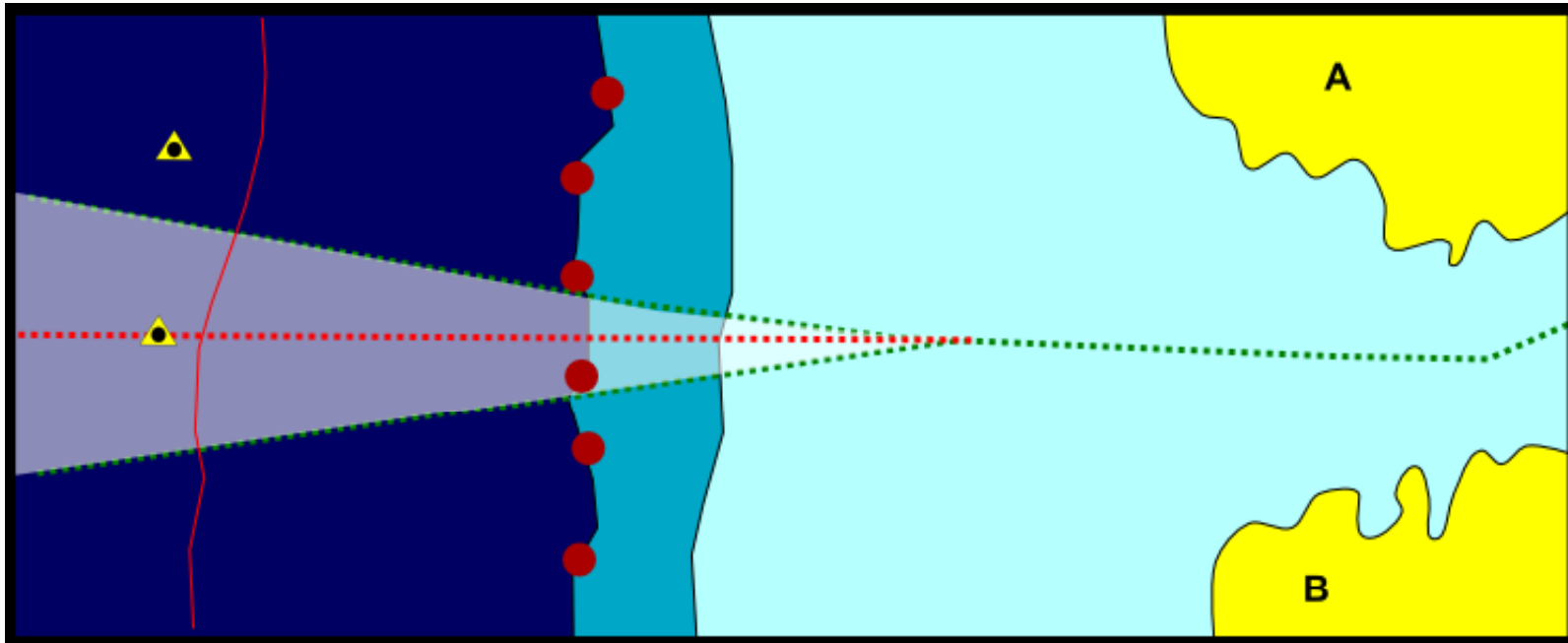
- Technical cooperation on small areas of mutual interest (e.g. FOS Point, Sediment Thickness Point).
- Individual technical teams and the amount of data shared would be limited to the mutual area of interest.
- Ensure a level of consistency between neighbouring coastal States in the application of Article 76

# Coordinated Submissions



- Useful also where an agreed continental shelf boundary already exists as they ensure some consistency in the location of the proposed outer limit of the continental shelf.
- Useful in regions where the dispute or unresolved boundary is relatively minor

# Coordinated Submission



# Harmonised Submissions

---



- Coastal State which shares many technical aspects of a submission with its neighbour.
  - Natural prolongation arguments along a shared continental margin
  - shared approach to the issue of determining sediment thickness.
  - FOS Determination

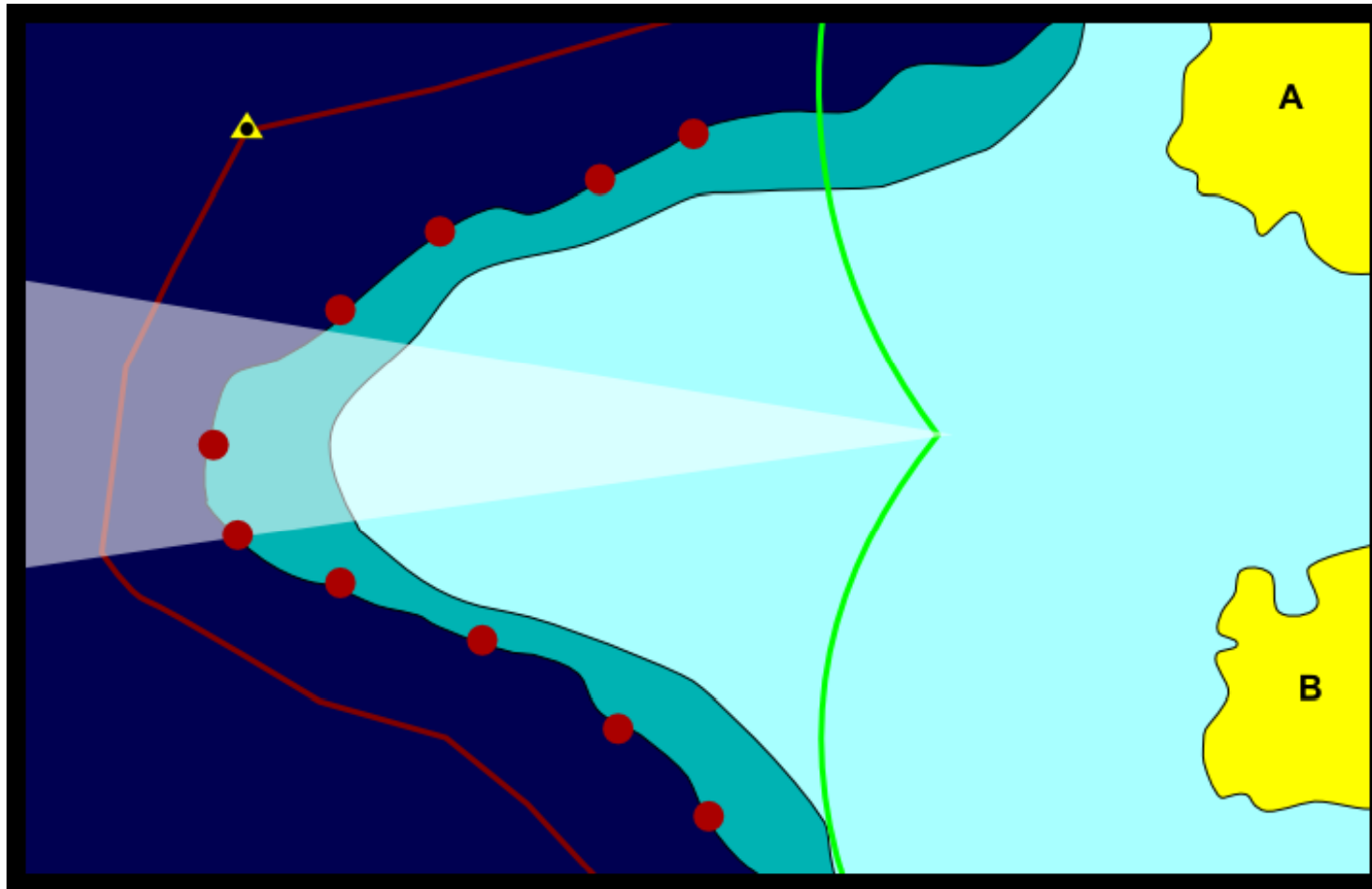
# Harmonised Submission



- Individual or joint technical teams
- Full data exchange
- Submissions may be prepared in tandem  
Similar to a joint submission however;
  - the logistical coordination is greatly reduced, particularly when presentation to the CLCS and examination by the Subcommittee is considered.
  - greater flexibility in the coastal State's position during examination by the Subcommittee.



# Harmonised Submissions



# Joint Submissions



- A single submission by two or more States prepared collectively and collaboratively
- Full data exchange and integration
- Working groups prepare documents collectively

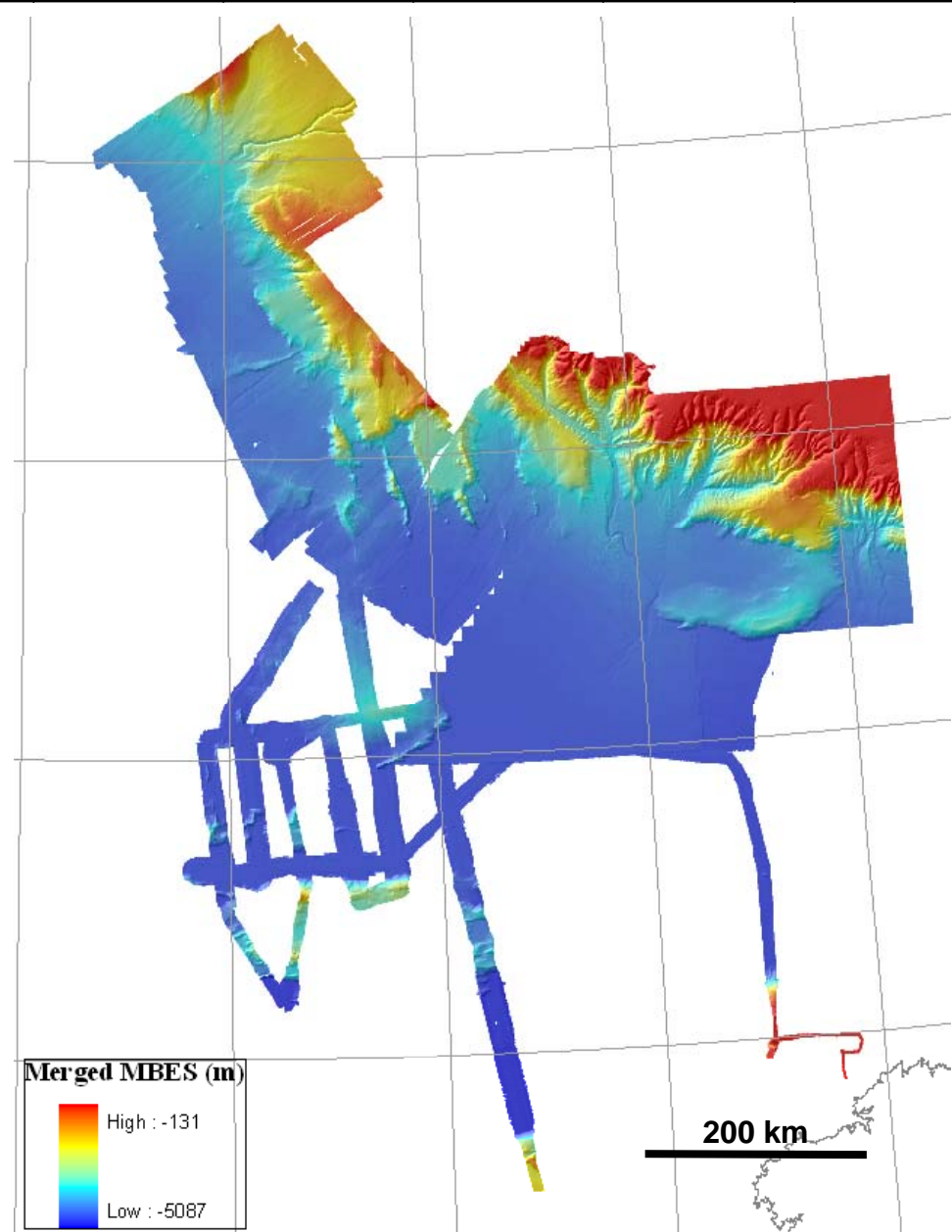
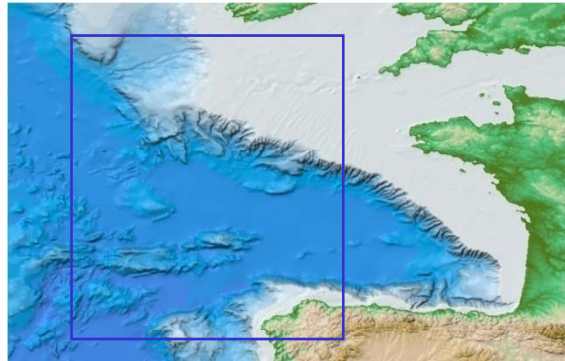
# Joint Submissions



## Some Advantages

- Combined Datasets
- Pooled Expertise
- Division of Labour
- Provides experience for States who have other submissions to make

# Pooled Bathymetric Data

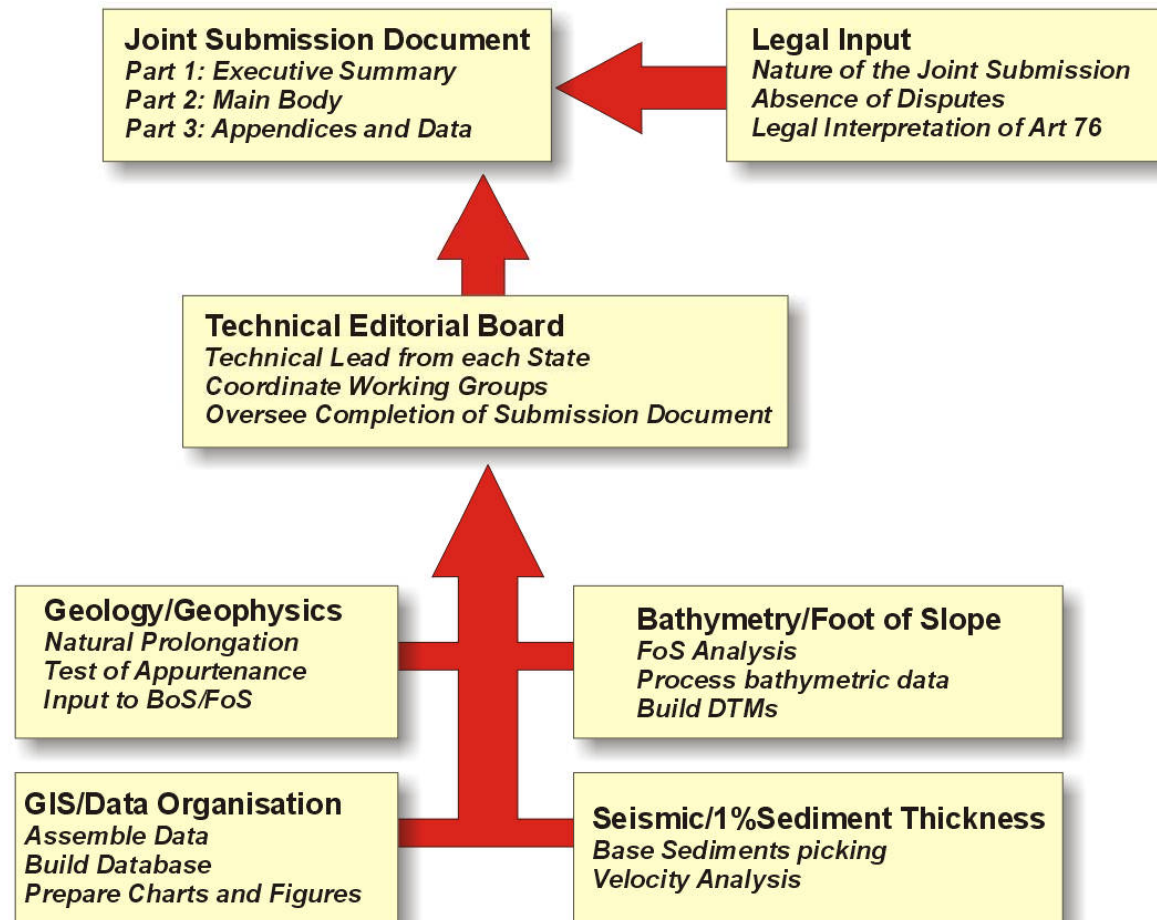


# Working Method



- Data Assessment and Acquisition
- Workshops
  - Agreed Outline
  - Analysis of Data
  - Development of geologic model for the region
- Transfer of material - FTP Site
  - Names assigned to appropriate sections of the document
  - 1<sup>st</sup> drafts uploaded to FTP sit
  - Editors download drafts from FTP
- Editorial Board
  - QC of material
  - Assembly of the Submission
  - Formatting and Structure

# Preparation of Joint Submission

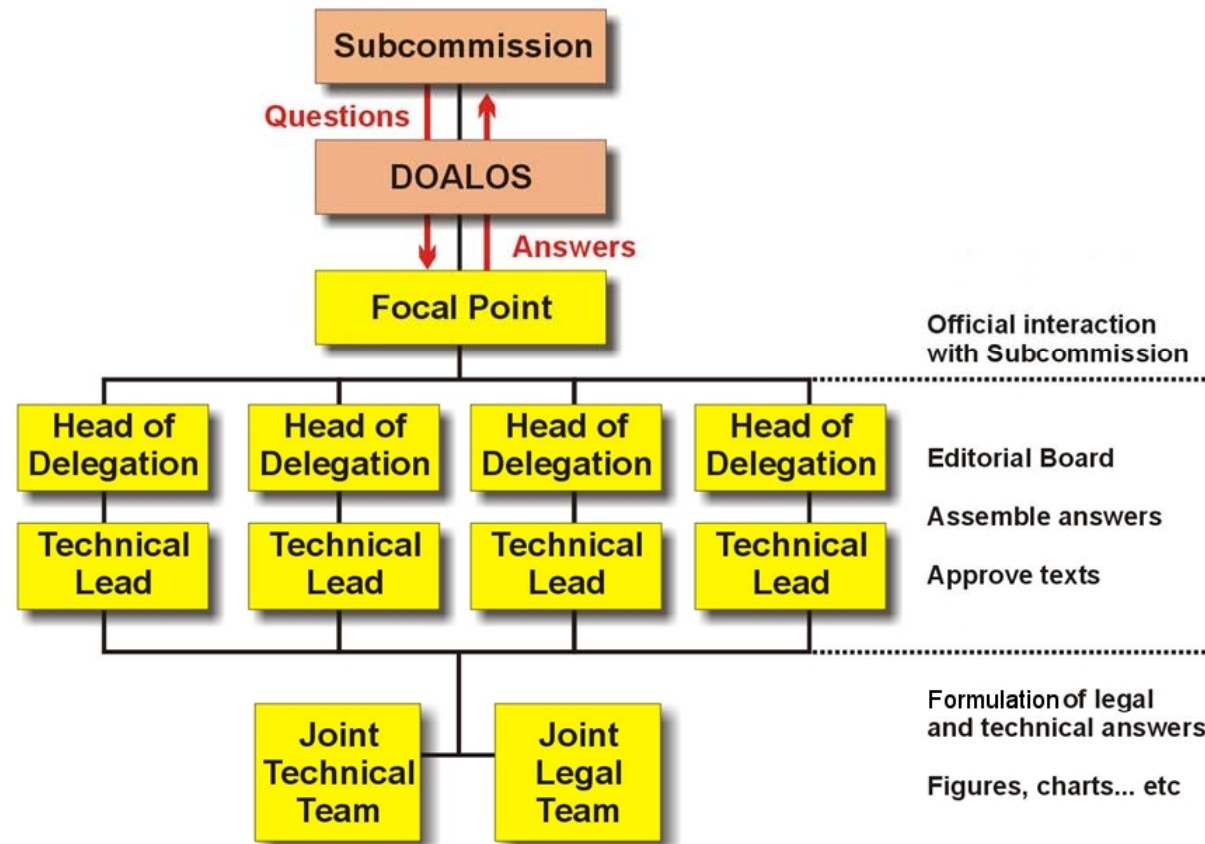


# Presentation of the Joint Submission



- Four Heads of Delegation
- Presentation to CLCS was delivered in four parts by the four Heads of Delegation in their respective languages
- The four Delegations interacted with the Subcommittee by means of a focal point through whom all correspondence and formal interactions with the Subcommittee occurred

# Interaction with the CLCS





# Discussion



- Multiple options open to coastal States for submissions to the CLCS
- Allow for coastal States with disputes or unresolved boundaries to make submissions to the CLCS
- All are simply varying strategies and do not change the way in which Article 76 is implemented

# Joint Submission



- Only one submitted so far
- More in the works
- How will the CLCS deal with Joint Submissions? (CLCS/56)
- Do the advantages of a joint submission outweigh the challenges?

# Thank You

- With thanks to DCENR, Ireland and colleagues from France, Spain and the UK
- Questions?

[www.geolimits.com](http://www.geolimits.com)

