

MSI Self Assessment NAVAREA XIX

Submitted by Norway/ Norwegian Coastal Administration

SUMMARY

Executive Summary: This document contains information about the planned implementation timeline for NAVAREA XIX, broadcasting of MSI messages and the need for training and support.

Action to be taken: Paragraph 11

Related documents: WWNWS1/3/4/1/1
COMSAR 13.14.3.22 (Final report)
CPRNW10.3-3 (Promulgation of MSI to NAVAREA XIX)
COMSAR 13.3.4 (Report of the Joint IMO/IHO/WMO CG)

1. Background:

NAVAREA XIX limits:

From a position on the Norwegian coastland at 65° 00'.00N to:

65° 00'.00N, 005° 00'.00W,

75° 00'.00N, 005° 00'.00W, west to a position on the Greenland coastline;

From the border between Norway and Russia (Inland) to:

69° 47'.68N 030° 49'.16E,

69° 58'.48N 031° 06'.24E,

70° 22'.00N 031° 43'.00E,

71° 00'.00N 030° 00'.00E, further north along the 030° 00'.00E meridian to

90° 00'.00N 030° 00'.00E,

90° 00'.00N 035° 00'.00W, south to the Greenland coastline along the 035° 00'.00W meridian;

NAVAREA XIX will start live testing in January 2010 and plan full operational status by January 2011. Inmarsat SafetyNet broadcasts will be provided via a rectangular area until the above boundary limits are incorporated into the Inmarsat System Definition Manual.

Navigational Warnings (SafetyNet): 0630 and 1830 (AOR-E)
Satellite SafetyNet broadcast service provider: to be confirmed.

NAVTEX and HF NBDP service provider: Telenor Maritime Radio (Formal agreement not signed). Further information regarding broadcasting of MSI messages in NAVAREA XIX is provided in document WWNWS1/3/4/1/1.

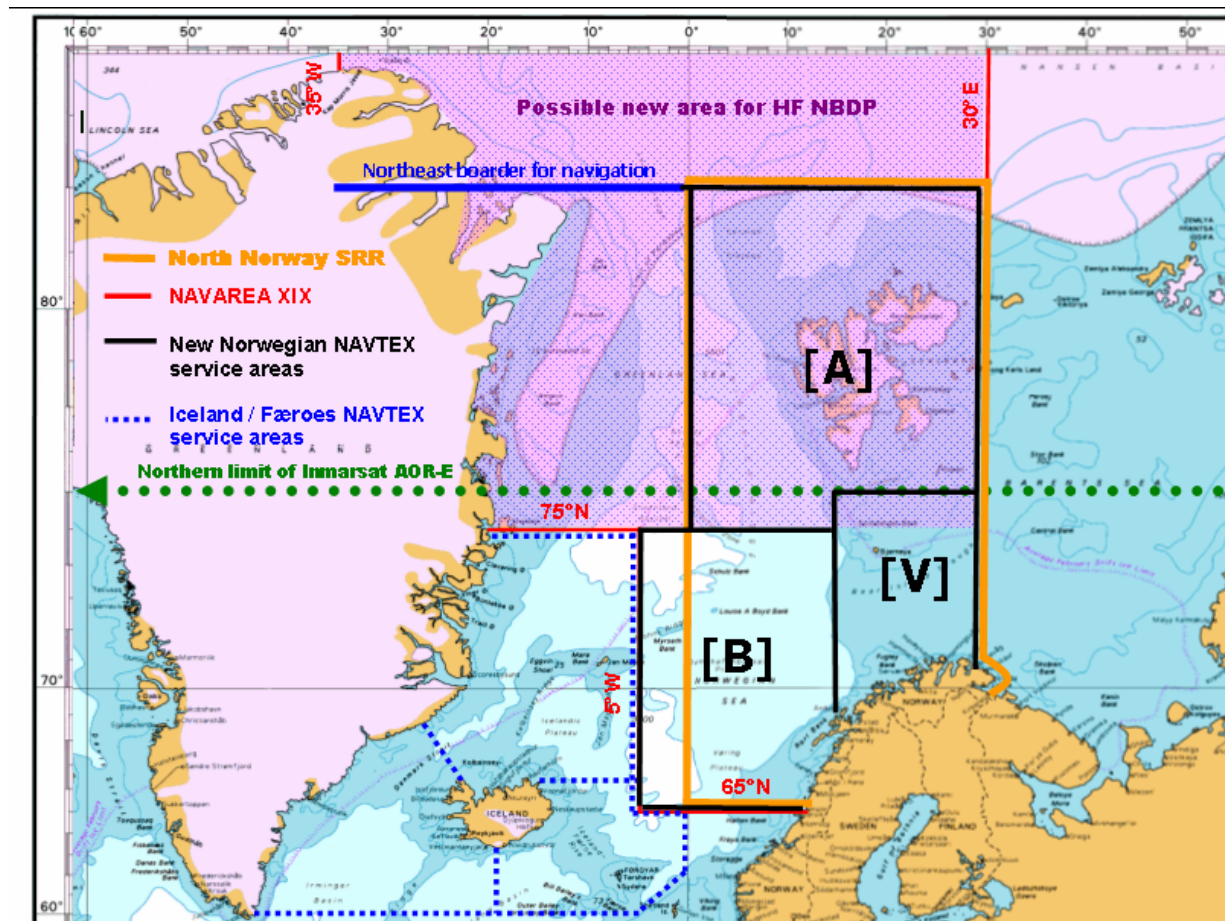
Based on paragraph 3.32 in the final report of COMSAR 13, the chairman of the Joint IMO/IHO/WMO Correspondence Group on Arctic MSI Services requested the administrations involved to prepare a brief report that addressed the terms of reference for the Correspondence Group. Item 7, “monitor the status of training, assistance and support to achieve operational capability of Arctic MSI services” is addressed in paragraph 6 “Capacity Building”. Items 1, 2, 3 and 5 are addressed in document WWNWS1/3/4/1/1.

2. Comments:

NIL

3. NAVTEX Coverage:

The following diagram shows NAVAREA/METAREA XIX with possible methods of broadcasting MSI



4. Operational Issues:

NIL

5. Quality Management Survey

NAVAREA	ISO 9001 - 2000	Promulgate "In-Force" Bulletins	Promulgate "No-Warning" Messages	Monitor Broadcast in almost real time	24/7 contact information provided	Promulgate two scheduled broadcasts	IMO Master Plan updated
XIX	N/A	N/A	N/A	N/A	N/A	N/A	N/A

6. Capacity Building:

NAVAREA XIX needs an operator training course to be arranged during autumn 2009. If required, NAVAREA XIX can host the training course.

NAVAREA XIX also need to accomplish a week of "on the job training" for operators with NAVAREA I during late autumn/ early winter 2009. (Dates to be coordinated with NAVAREA I).

7. Other Activities:

NIL

8. NAVAREA Website:

Internet domains are reserved and registered. The Website will be available in time for full operational status.

9. NAVAREA Contact Information:

NAVAREAs XIX:

Department of Maritime Safety
Norwegian Coastal Administration Head Office
Servicebox 2
6025 Ålesund
Norway
Telephone: +47 33 03 48 08
Facsimile: +47 70 23 10 08
E-mail: post@kystverket.no

24/7 NAVAREAs XIX:

Vardø VTS
Servicebox 2
6025 Ålesund
Norway
Telephone: +47 78 98 98 98
Facsimile: +47 78 98 98 99
E-mail: navarea19@kystverket.no

10. Recommendations:

NIL

11. Actions requested:

WWNWS is invited to note this report.

12. Synopsis:

NAVAREA XIX introduced the Self-Assessment Report. NAVAREA XIX will start live testing in January 2010 and plan full operational status by January 2011.