

MSI Self Assessment NAVAREA XIV

Submitted by New Zealand, Land Information New Zealand

SUMMARY

Executive Summary: Overview of activities undertaken in NAVAREA XIV since WWNWS4

Action to be taken: See section 12

Related documents: None

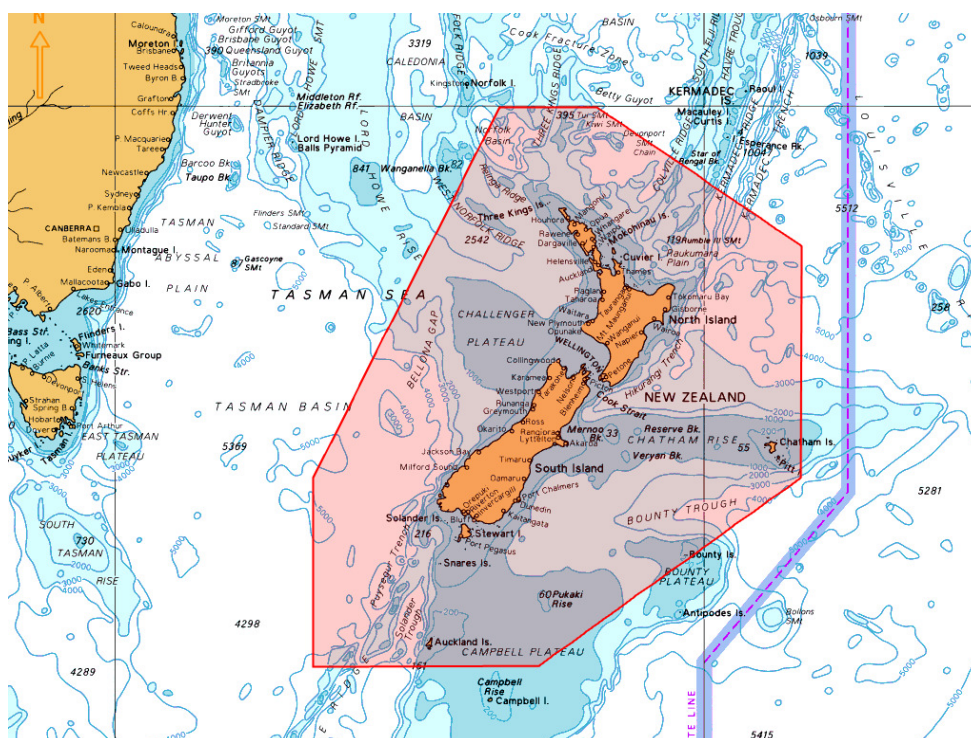
1. Background:

The limits of NAVAREA XIV are given as:

00° 00'N, 120° 00'W to
73° 50'S, 120° 00'W (Antarctic coast) then
69° 37'S, 160° 00'E (Antarctic coast) to
45° 00'S, 160° 00'E to
29° 00'S, 170° 00'E to
00° 00'N, 170° 00'E



New Zealand Coastal Warning Area 'Z' is depicted below.



NAVAREA XIV and New Zealand Coastal Warnings are broadcast via:

Taupo Maritime Radio ZLM (Radio Telephony) at the first scheduled time following receipt and then at the scheduled times as per ALRS Vol 3(2), 2012/2013 Edition whilst the warnings are in force or until they have been promulgated by other means; and

Inmarsat-C EGC SafetyNET system via the Pacific Ocean Region (POR) satellite through the Land Earth Station (LES) at Burum, Netherlands on receipt and as part of scheduled broadcasts 0900 and 2100 UTC.

The warnings are broadcast and monitored by Taupo Maritime Radio through a Mobile Earth Station (MES). The Australian Maritime Safety Authority (AMSA) assists New Zealand in monitoring repeat EGC transmissions via an EGC supervisory system. Transmitted NAVAREA XIV and New Zealand Coastal Navigation Warnings are emailed to Taupo Maritime Radio, where the Coastal Warnings are checked, and NAVAREA XIV warnings are forwarded to the NAVAREA XIV Coordinator.

Operational Points of Contact for National Coordinators within the NAVAREA

COUNTRY	TELEPHONE	FACSIMILE	E-MAIL
New Zealand	+64 45778030	+64 45778038	rccnz@maritimenz.govt.nz
Fiji	+679 3315 266	+679 3313 127 +679 3303 251	msi@msaf.co.fj
French Polynesia	+689 541 615	+689 423 915	mrccpapeete@mail.pf
Kingdom of Tonga	+676 24 696	+676 42 467	holokaukau@yahoo.com
Western Samoa	+685 21 611	+685 28688	kalolo@mwti.gov.ws
Cook Islands	+682 20321	+682 24321	viapo.mataora@moip.gov.ck
New Caledonia	+687 292 332	+687 292 303	mrcc.nc@lagoon.nc

Wallis & Futuna			mrcc.nc@lagoon.nc
-----------------	--	--	--

2. Comments:

The GMDSS Master Plan is up to date as at 21 August 2013.

The following table shows the number of SafetyNET messages promulgated:

	2010	2011	2012	2013 (to July)
NAVAREA XIV	52	125*	110	67
NEW ZEALAND COASTAL	88	318*	270	171

* The increase in warnings broadcast via SafetyNET, since 2011, is attributed to changes in procedure as reported at WWNWS3.

3. NAVTEX Coverage:

New Zealand does not broadcast coastal warnings via NAVTEX. The maritime areas around New Zealand have been designated GMDSS Sea Area A3. Given that ships are required to carry equipment appropriate to the area that they are sailing in, carriage of an Inmarsat-C MES is mandatory for SOLAS vessels. Coastal warnings are broadcast using SafetyNET.

4. Operational Issues:

No operational issues to report

NAVAREA XIV promulgates Warnings In-Force bulletins.

Text of NAVAREA XIV Warnings In-Force are available on the web page <http://www.linz.govt.nz/hydro/nautical-info/navigation-area-14> and reprinted in the fortnightly editions of New Zealand Notices to Mariners.

5. Quality Management Survey

NAVAREA	ISO 9001 - 2008	Promulgate "In-Force" Bulletins	Promulgate "No-Warning" Messages	Monitor Broadcast in almost real time	24/7 contact information provided	Promulgate two scheduled broadcasts	IMO Master Plan updated
XIV	NO	YES	YES	YES	YES	YES	YES

6. Contingency Planning

LINZ is investigating a Business Continuity Plan to ensure the provision of MSI continues if a catastrophic event occurs.

RCC New Zealand has comprehensive redundancy systems in place, and access to a remote Disaster Recovery site where the provision of WWNWS can continue.

There is an informal arrangement between the out-sourced marine communications centres in Canberra and Wellington. Maritime Operation Centre (MOC) also provides ad-hoc support for other national coordinators in NAVAREA XIV.

7. Capacity Building:

New Zealand has offered to host the WWNWS6 meeting in 2014. In anticipation of this offer being accepted, the South West Pacific Hydrographic Commission (SWPHC) submitted an application to the IHO to hold an MSI Regional Workshop adjacent to the WWNWS6. This was approved and is included in the IHO Capacity Building Work Programme for 2014. The workshop will be hosted by LINZ, lead by trainers from New Zealand (NAVAREA XIV) and Australia (NAVAREA X).

MSI training will also form a component of an IMO funded Hydrography training course to be held in Fiji in February 2014, to be lead by New Zealand (LINZ NZHA) and Australia (AHS).

8. Other Activities:

New Zealand attended the IHO Hydrographic Commission on Antarctica (HCA) in October 2012; the IALA Risk Assessment Workshop in November; and the IHO Capacity Building Sub-Committee (CBSC) and Inter-Regional Coordination Committee (IRCC) in May/June 2013.

LINZ hosted an IHO Cat-B Nautical Cartography Training Course in February 2013.

LINZ and the Ministry of Foreign Affairs & Trade (NZ Aid programme) continue to work on the South West Pacific Regional Hydrography Programme. This is an evidence based, risk assessment to prioritise charting improvements to achieve adequate and accurate nautical charts, primarily within the New Zealand area of chart coverage and extending to Kiribati, Vanuatu, Solomon Islands and Tuvalu. A proof of concept for Vanuatu has been completed and the risk assessment methodology has been published.

MNZ attended COMSAR 17 at IMO Headquarters in London, UK in January 2013.

9. NAVAREA Website:

NAVAREA XIV warnings in-force are available on the Land Information New Zealand (LINZ) website <http://www.linz.govt.nz/hydro/nautical-info/navigation-area-14/index.aspx>. While every effort is made to keep the information up-to-date it may not always be possible to add and cancel warnings in real-time. The website displays the date and time of the last update. The website also includes a link to the IHO WWNWS survey on the quality of MSI broadcast service.

A list of NAVAREA XIV warnings in-force is reprinted in the fortnightly editions of the New Zealand Notices to Mariners which are available from the LINZ website <http://www.linz.govt.nz/hydro/ntms/index.aspx>.

10. NAVAREA Contact Information:

New Zealand Hydrographic Authority
Land Information New Zealand
Radio New Zealand House
155 The Terrace

PO Box 5501
Wellington 6145
New Zealand

Telephone: +64 4 4600110 (Office hours Mon-Fri)
+64 27 6879536 (H24)
+64 27 7046994 (H24)
Fax: +64 4 4983535 (Office hours Mon-Fri)
E-mail: navareaxiv@linz.govt.nz
Website: <http://www.linz.govt.nz/hydro/nautical-info/navigation-area-14/index.aspx>

11. Recommendations:

None

12. Actions requested:

Note the information provided.

13. Summary:

The NAVAREA XIV self-assessment report highlights MSI activities for the period August 2012 to July 2013, which did not include any areas of concern. LINZ are investigating a Business Continuity Plan to ensure the provision of MSI continues if a catastrophic events occurs.