

Depiction to delimit the area surveyed adequately after a disaster



Paper for Consideration by CSPCWG

JHOD's actions: immediately after the disaster

Many new obstructions are anticipated.

JHOD:

- called mariners' attention with JHOD's website and NMs
- issued a NMs block of a cautionary note

注 意

平成23年3月11日に発生した地震及び津波により、水深、海岸線等の変化、沈船及び障害物の移動並びに新たな障害物の存在の可能性があるので、注意すること。

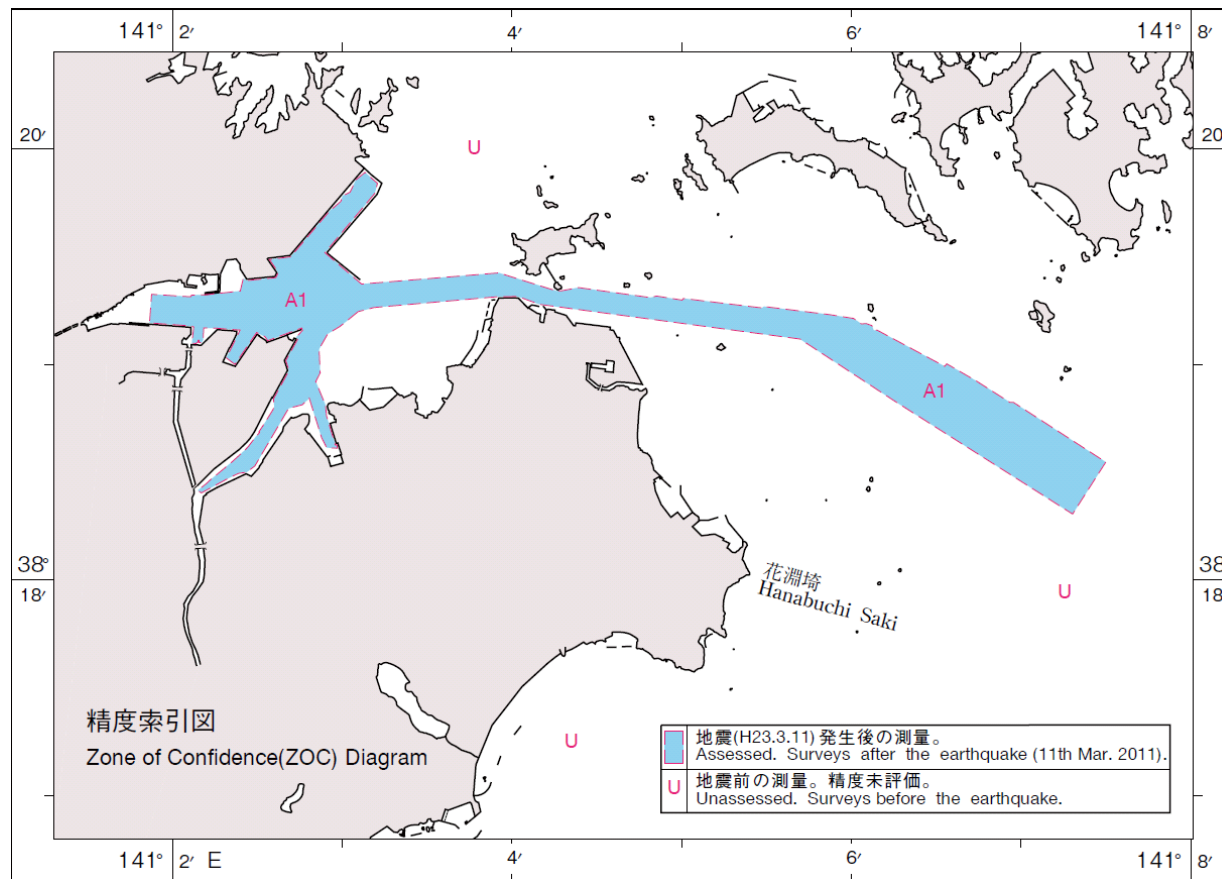
C a u t i o n s

As a consequence of the earthquake and tsunami which occurred on 11 March 2011, depths, coastlines etc. may have changed, wrecks and obstructions may have been displaced, and new obstructions may exist. Mariners should expect considerable change.

Use of ZOC Diagram

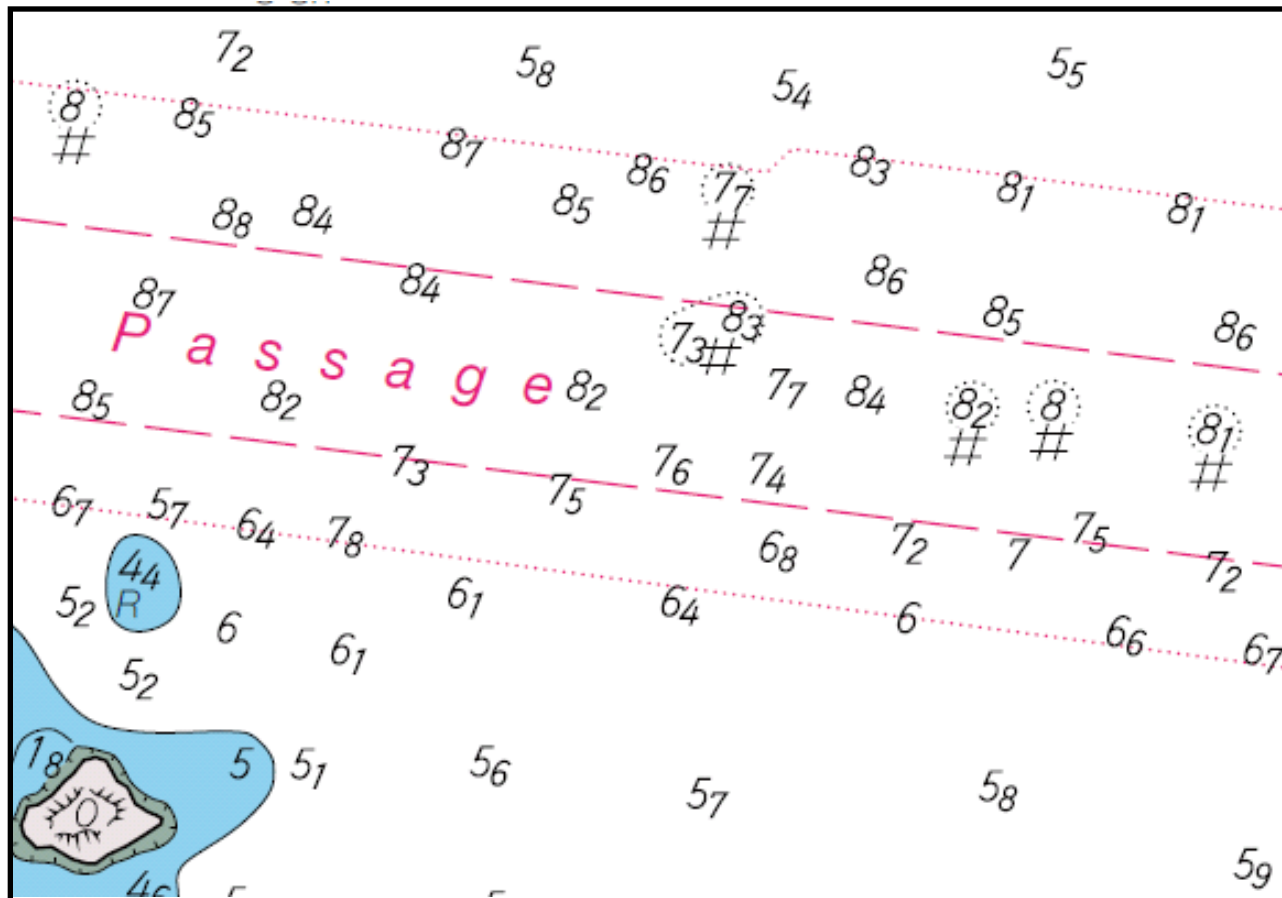
JHOD:

- filled the area surveyed after the earthquake with solid blue
- provided two ZOC categories meaning survey "before" and "after" the earthquake on the chart: other meanings of ZOC categories are provided in JHOD's website and NMs.



Proposal for new symbol

- Dotted line in magenta to delimit new survey area
- User's voices were considered in defining this symbol



Addition of a legend

- This symbol is not an international symbol and not included in INT 1
- Combination with ZOC Diagram

凡例 Legend



地震後の測量区域
Area of surveys after
the earthquake.

Revision of S-4

SECTION 400 HYDROGRAPHY AND AIDS TO NAVIGATION

- **B-417.8 or B-439.1**

Add 'dotted line in magenta' which delimit the area surveyed after a great disaster.

- **This line symbol should be included in N1 in INT 1**