

**8th CSPCWG Meeting  
Turku, Finland, 29 November – 2 December 2011**

**Paper for Consideration by CSPCWG  
Adopting Danish national symbols as international symbols**

<b>Submitted by:</b>	Denmark
<b>Executive Summary:</b>	Do any other nations use national symbols similar to the Danish and would it be beneficial to make these national symbols international?
<b>Related Documents:</b>	S-4, INT1 Section E, Section F, Section Q
<b>Related Projects:</b>	None

### **Introduction / Background.**

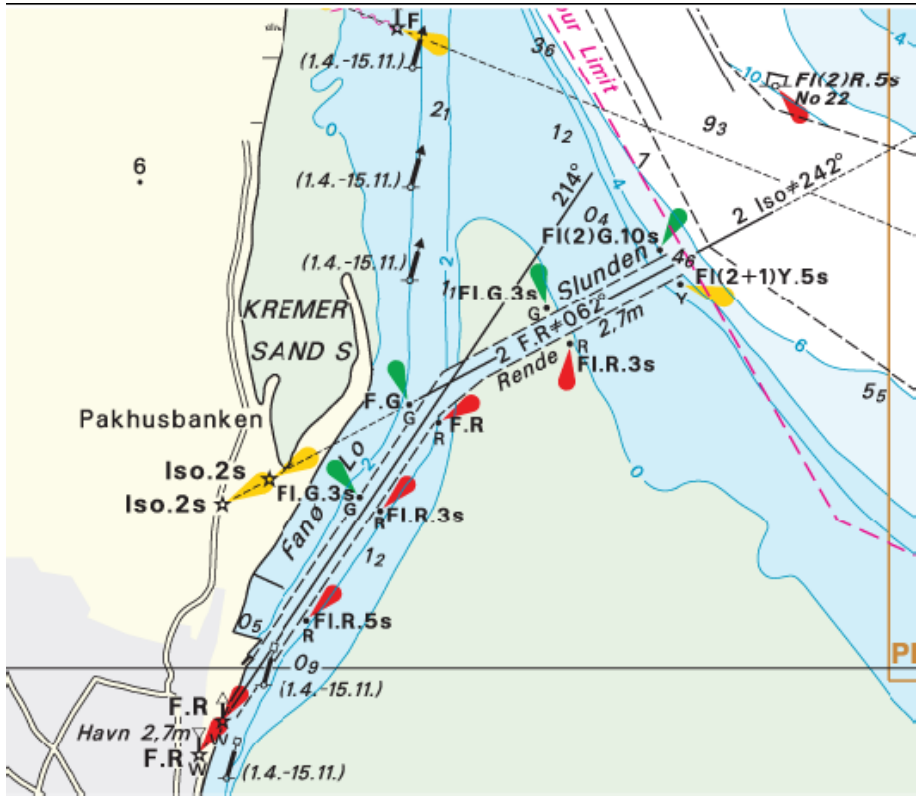
Due to the implementation of a new production system we have been urged to look through our national symbols and have to decide which to retain and which to make obsolescent.

Denmark would like to know if other nations use similar symbols and to propose these symbols to be adopted as international symbols if endorsed by WG.

### **Analysis / Discussion.**

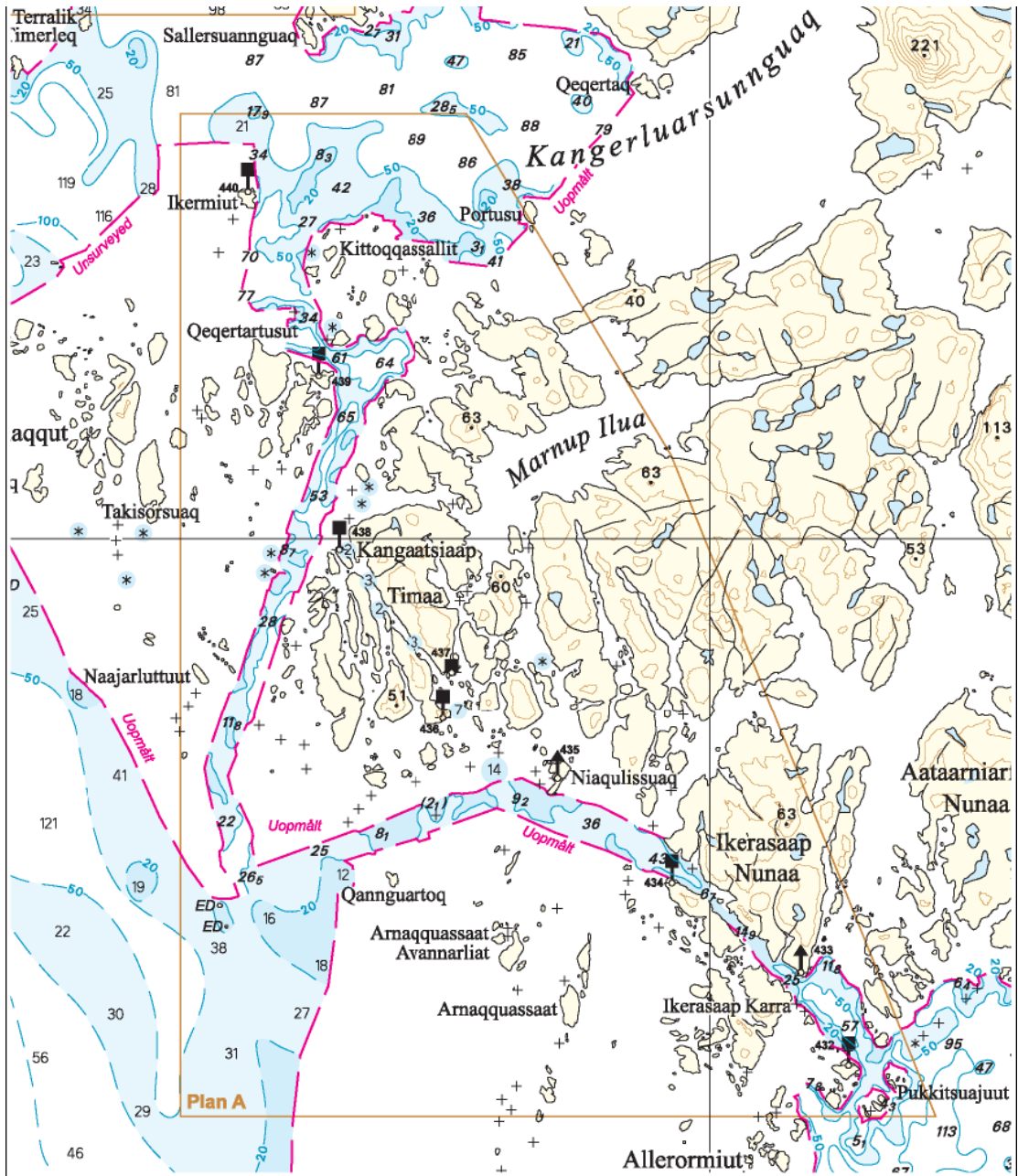
Denmark would like to bring to discussion the adoption of the following symbols:

- 'Disused village' (Section E) – used as landfall in Greenlandic charts where the information level is quite sparse ☒
- 'Mooring ring' (in Danish: 'ringbolt') (Section F) – used in Greenlandic charts ☐**RB**
- ☐**RB**
- 'Stake, pole' (Section Q 90) – shown as a dot to avoid clutter (see example below):

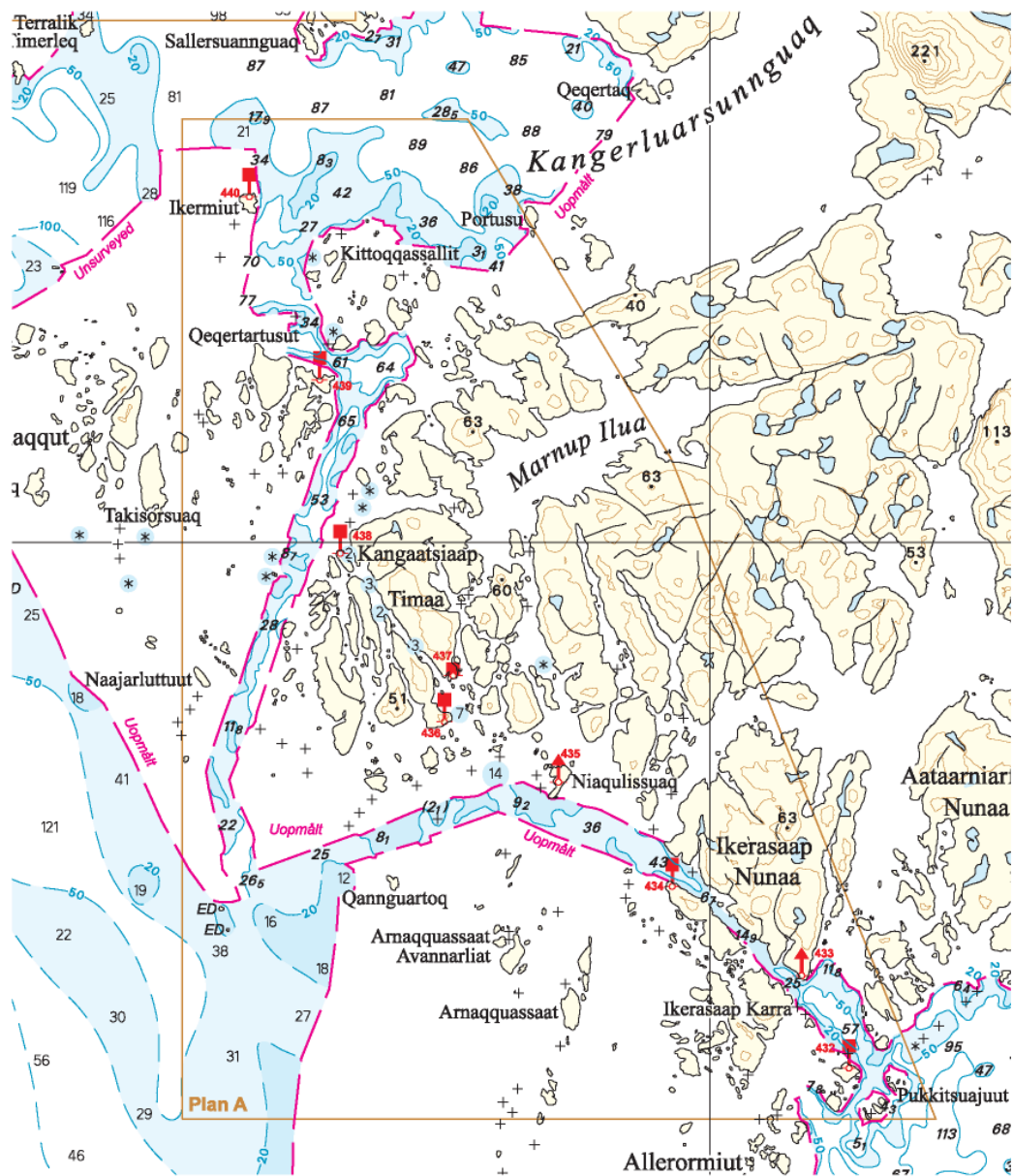


'Beacons, daymarks' (Section Q) – shown in red in Greenlandic charts for enhancement (see examples below):

Standard colour:



Symbols in red:



Does the WG approve of the adoption of all or some of the Danish symbols or should we retain them as national?

### Conclusions.

If not accepted by WG Denmark will keep the discussed symbols as national symbols.

### Recommendations.

None

### Justification and Impacts.

Possible amendments to S-4 and INT1.

### Action required of CSPCWG.

The CSPCWG is invited to consider and discuss the possible adoption of Danish national symbols as international symbols.