

9th CSPWG MEETING
Seoul, Republic of Korea, 13-16 November, 2012

Paper for Consideration by CSPCWG
Maximum draught areas

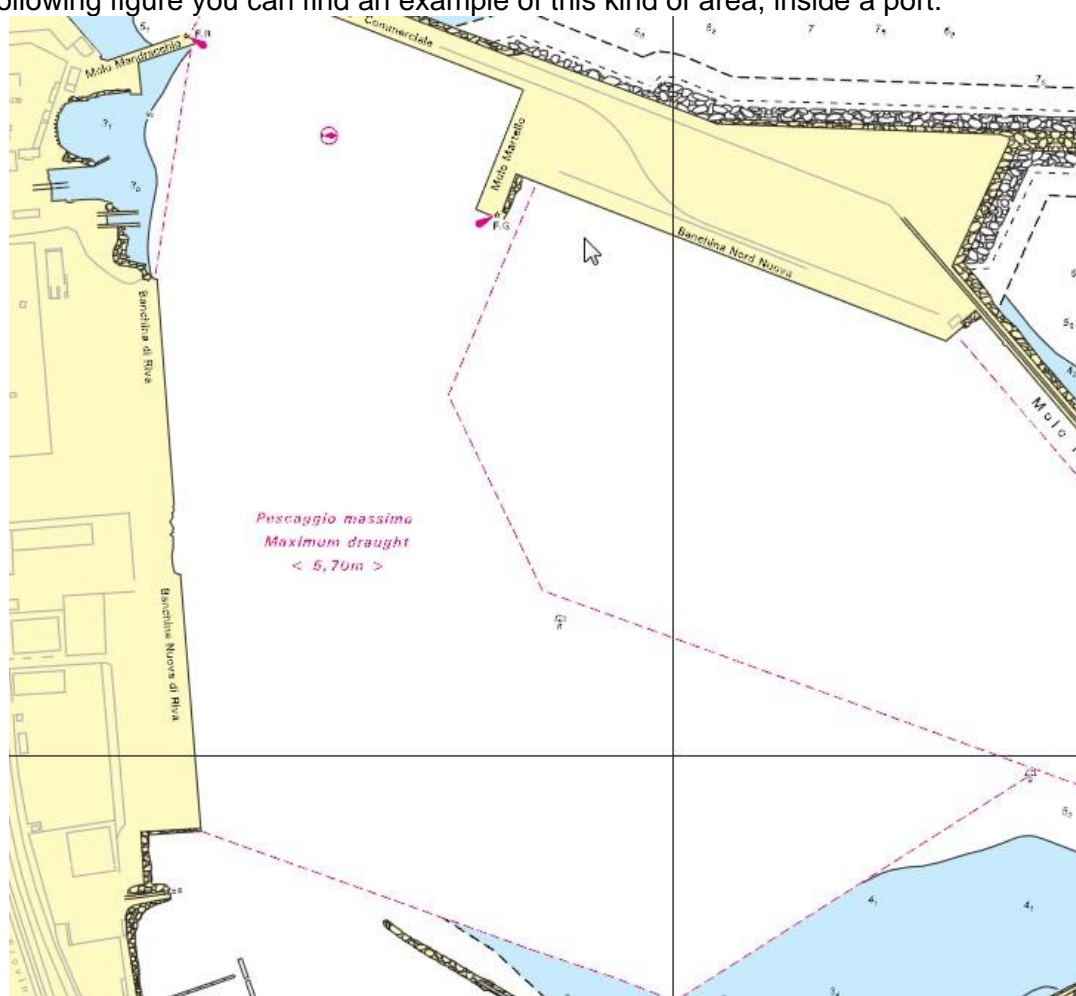
Submitted by:	Italian Hydrographic Office
Executive Summary:	The purpose of the paper is to focus on the maximum authorised draught defined by regulatory authority.
Related Documents:	S4, INT1
Related Projects:	Review of S4 and INT1

Introduction / Background

Item n.20 (Agenda ref 8.18) refers to fairways with maximum authorized draught.

Sometimes the maximum authorized draught designated by the regulatory authority isn't related to a fairway but to an area.

In the following figure you can find an example of this kind of area, inside a port:



Analysis / Discussion

In S4 the maximum draught is only related to Fairways (B-434.5) and to Fish havens (B-447.5).

We suggest to represent this kind of area with bold magenta dashed line (M15); the maximum draught could be indicated as for *FAIRWAY*, eg:



As for a Fairway, soundings and depth contours or any other data should be included as appropriate. If the boundary of maximum draught area coincide with the limits of a dredged or maintained area, or light sector limit, the usual cartographic principles apply, see B-439.6.

Conclusions

The suggested solution would enable HOs to insert this sort of data directly on the chart in order to increase the readiness of information. If necessary, a note may be added to refer to further information in other publications, such as Sailing Directions.

Justification and Impacts

If these suggestions are accepted, it will be necessary to modify S-4 at B-434.5 and update or insert a new item in INT1 M18.

Action required of CSPCWG

The CSPCWG is invited to:

- a. endorse
 - b. agree
 - c. note
- etc.