

9th CSPWG MEETING
Seoul, Republic of Korea, 13-16 November, 2012

Paper for Consideration by CSPCWG
Representation of fairway

Submitted by:	France (SHOM)
Executive Summary:	Representation of non regulated fairway
Related Documents:	S-4, B-432, B-434, B-434-5
Related Projects:	/

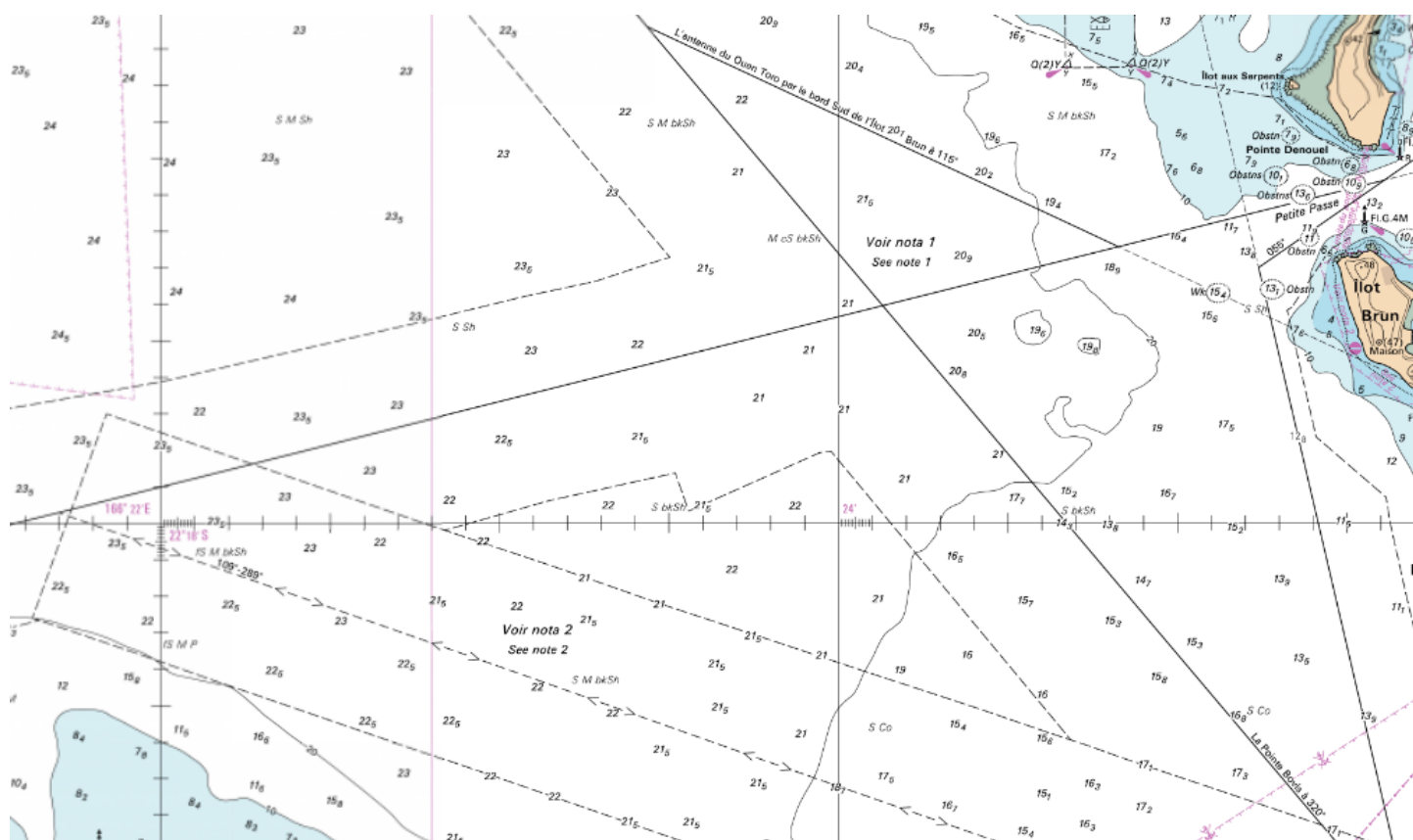
Introduction / Background

S-4, B-434.5 proposes symbology for fairway designated by a regulatory authority in accordance with B-432.1c. But the beginning of B-432.1c states that “A **Fairway**, sometimes called Ship Channel, is the main navigable channel in the approaches to, or within, a river or harbour.” We can understand that all fairways are not designated by a regulatory authority.

Analysis / Discussion

If we considered that all fairways are not designated by a regulatory authority, the magenta representation shown in B-434.5 is not adapted for non regulated fairways.

Considering that a fairway has specified outer limits (see B-434), France suggests that a non regulated fairway should be represented by a black limit using N1.1 symbol. This can be combined with a recommended track (M3 or M4) and a note to give details about the minimum depth, technical information about the survey...



1 - Voie recommandée

Les zones délimitées par un trait tireté noir ont fait l'objet d'une investigation au sondeur latéral (voir le diagramme).

2 - Voie recommandée entre Îlot Maître et Île aux Canards

La zone délimitée par un trait tireté noir a fait l'objet d'une investigation au sondeur latéral. Il n'y existe aucune profondeur inférieure à 12 mètres.

Recommended track

The areas shown by a black pecked line have been investigated by sidescan sonar (see diagram).

Recommended track between Îlot Maître and Île aux Canards

The area shown by a black pecked line has been investigated by sidescan sonar. All depths are deeper than 12 metres.

Conclusions

France proposes to add an example in B-434.5 of non regulated fairway with a limit in black dashed line.

Recommendations

France recommends the CSPCWG to adopt this proposal.

Justification and Impacts

This case seems not well described in S-4 and B-434.5 could take to think that there is no other possibility for fairway. A clarification in S-4 could be enough.

This proposal could be approved by CSPCWG without any further investigation if the current proposal is right.

Action required of CSPCWG

The CSPCWG is invited to:

- a. endorse that a clarification is required for B-434.5 to explain how to represent non regulated fairway by a black dashed line.