

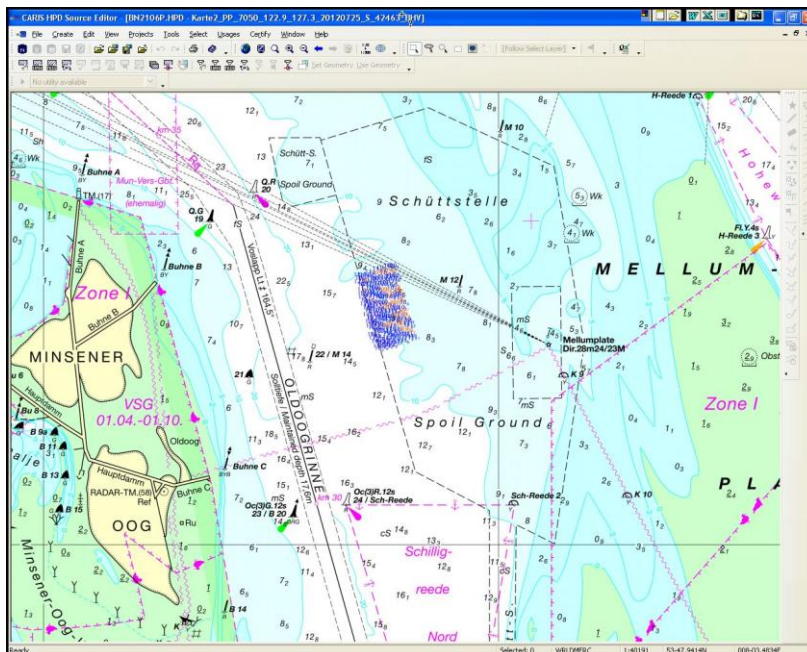
9<sup>th</sup> CSPWG MEETING  
Seoul, Republic of Korea, 13-16 November, 2012

Paper for Consideration by CSPCWG  
Depth information in Spoil Grounds

<b>Submitted by:</b>	BSH, Germany
<b>Executive Summary:</b>	Showing dashed (approximated) depth contours within Spoil Grounds
<b>Related Documents:</b>	INT 1 N 62.1; S-4 B446.1
<b>Related Projects:</b>	none

## Introduction / Background

In some of our German charts we have fairly large spoil grounds of which not the complete area but only several parts are used for dumping. Partly they are even crossed by minor fairways. The dumping grounds are regularly surveyed by multibeam sonar but it cannot be made sure that a survey occurs after each dumping. Interpreting a survey it became evident that the water was punctually several meters shallower than recently charted.



This image shows a spoil ground crossed by a fairway. Dumped parts are surveyed regularly by multibeam sonar (see scatter plot).

## Analysis / Discussion

S4 contains several options how depth information within spoil grounds may be handled:

S4 B446.1: Spoil grounds. The limits of spoil grounds must be charted by a black dashed line, normally on the largest scale charts of an area only. If the depths within the area are liable to be very much less than charted after the discharge of spoil, they may be treated as unsurveyed areas (see

B-418.1); soundings and depth contours may be omitted from the area, provided adequate warning is given by the use of blue tint, and/or a cautionary note accompanying the legend.

Within Spoil Grounds the liability of depth Information may vary depending on the frequency of survey, the frequency of dumping and the mass of dumped material. The way of depicting depths within dumping grounds should be chosen depending on these circumstances.

## Conclusions

none

## Recommendations

We recommend to change the text in S4 B446.1 as follows:

S4 B446.1: Spoil grounds. The limits of spoil grounds must be charted by a black dashed line, normally on the largest scale charts of an area only. If the depths within the area are liable to be very much less than charted after the discharge of spoil, they may be treated as unsurveyed areas (see B-418.1); soundings and depth contours may be omitted from the area, provided adequate warning is given by the use of blue tint, and/or a cautionary note accompanying the legend. ***Depth contours may be shown as dashed lines (approximated) without showing soundings. This way of depiction may be adequate, if a dumping ground is surveyed regularly enough to give an approximated impression of the depths. Depth contours should be conformed to the recent survey in the next New Edition of the chart.***

## Justification and Impacts

This way of showing depth information is somewhere between showing no depth information i.e. unsurveyed area and showing full bathymetry. This depiction could be adequate if spoil grounds which are surveyed regularly with multibeam sonar and it can be considered unlikely that depths become much shoaler after recent survey. It might be certainly adequate if there are larger spoil grounds that are not completely used for dumping and if they are crossed by a fairway. It gives an impression of approximated depths but there might be depths less than charted.

## Action required of CSPCWG

The CSPCWG is invited to:

- a. discuss .....
- b. agree .....