

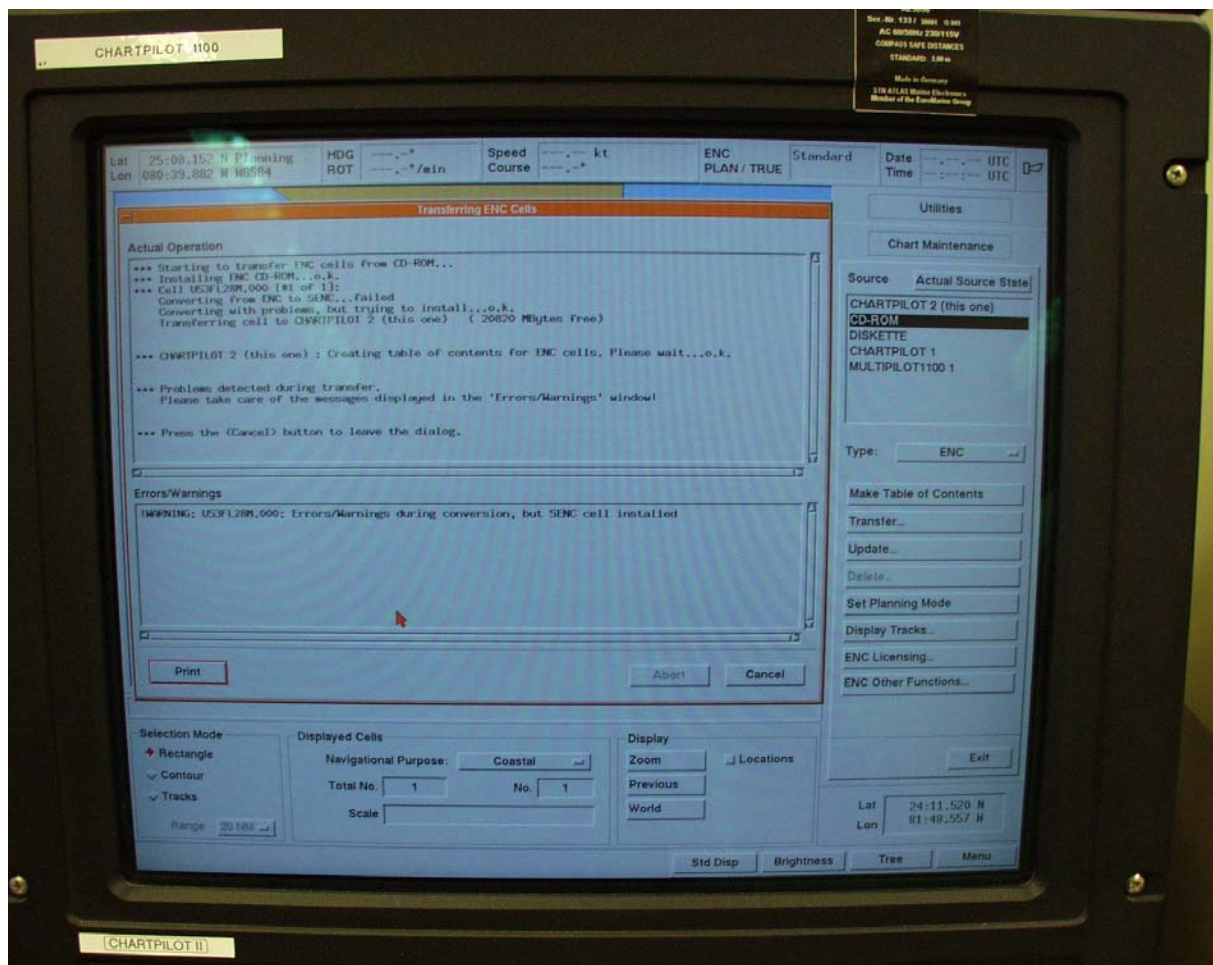
Report on testing of the S57 Ed.3.1.1 Data-Set on four type-approved ECDIS-Systems – March 2006

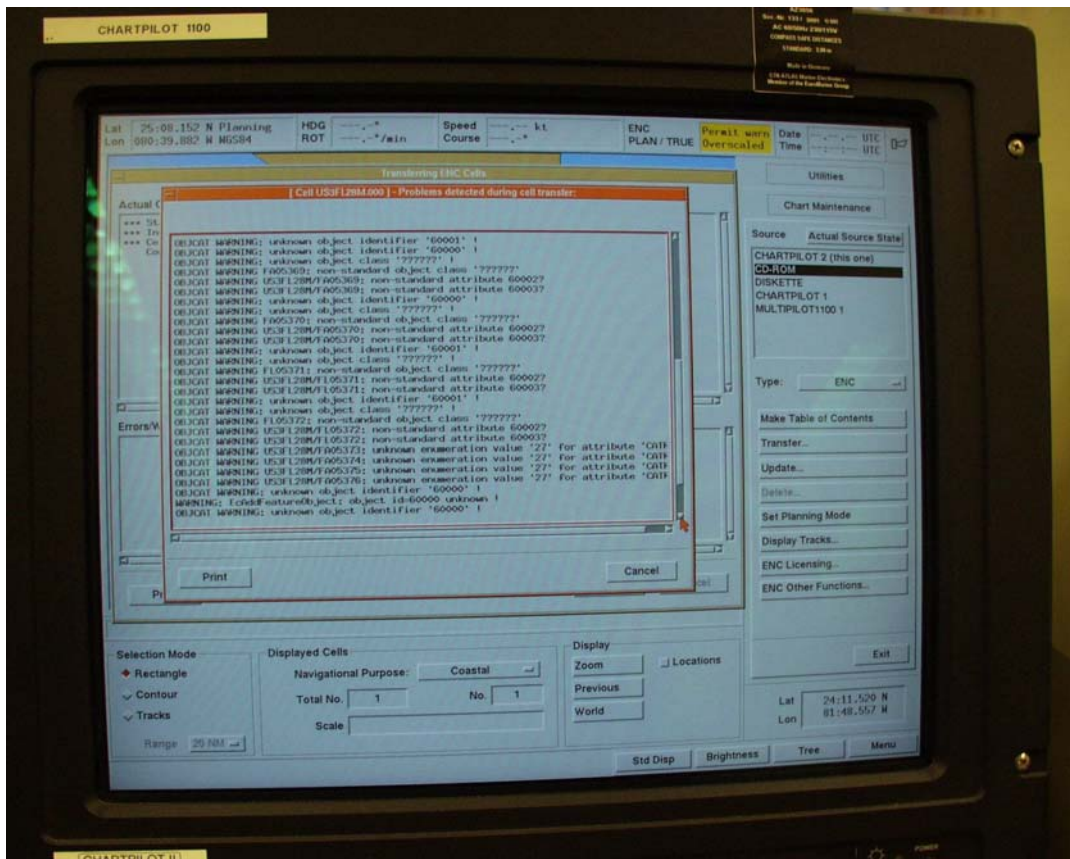
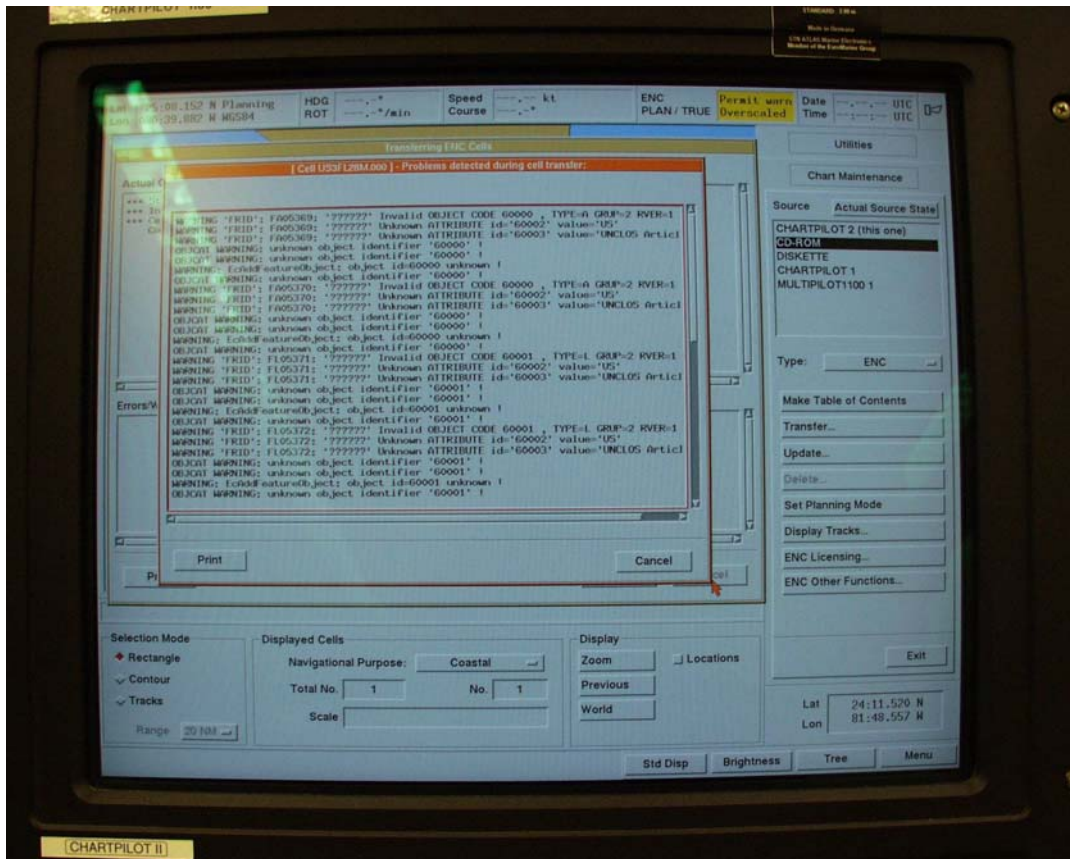
Tests conducted by Jochen Ritterbusch, Johannes Melles

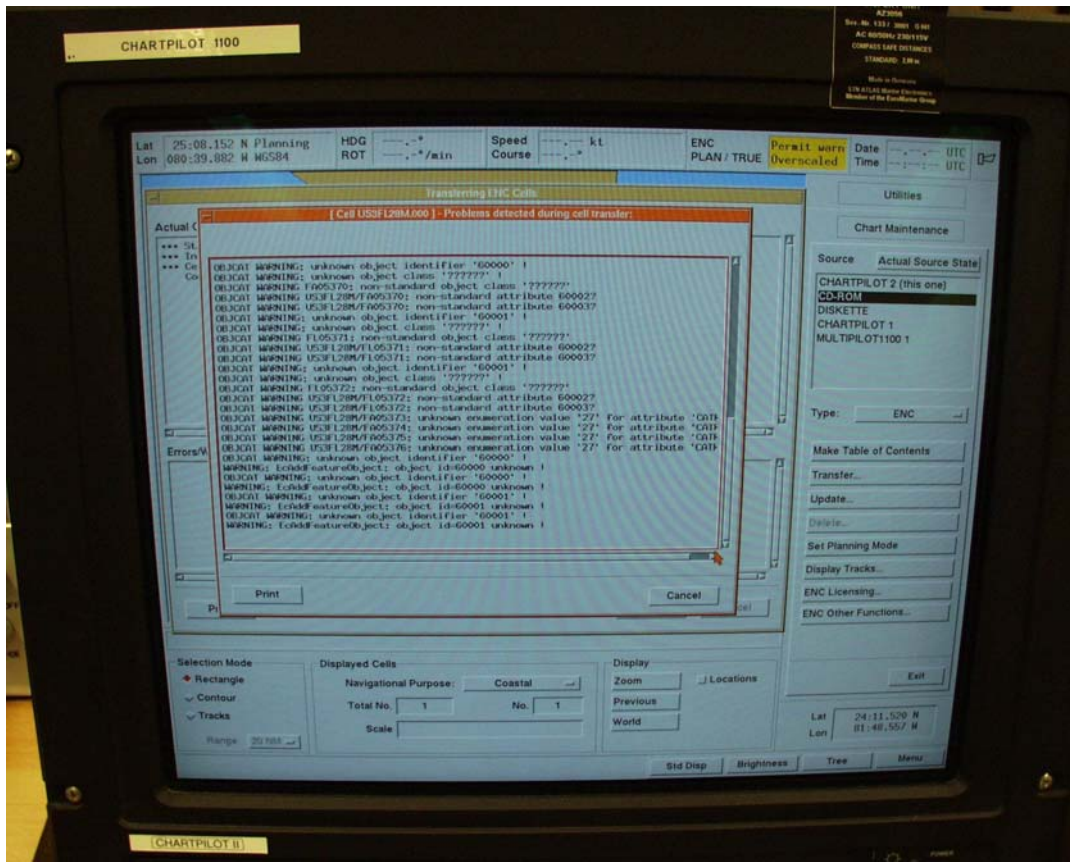
1. CHARTPILOT 1100

Vers. 5.32, Own Kernel, PresLib 3.2 (31.3.2000)
SAM Electronics GmbH

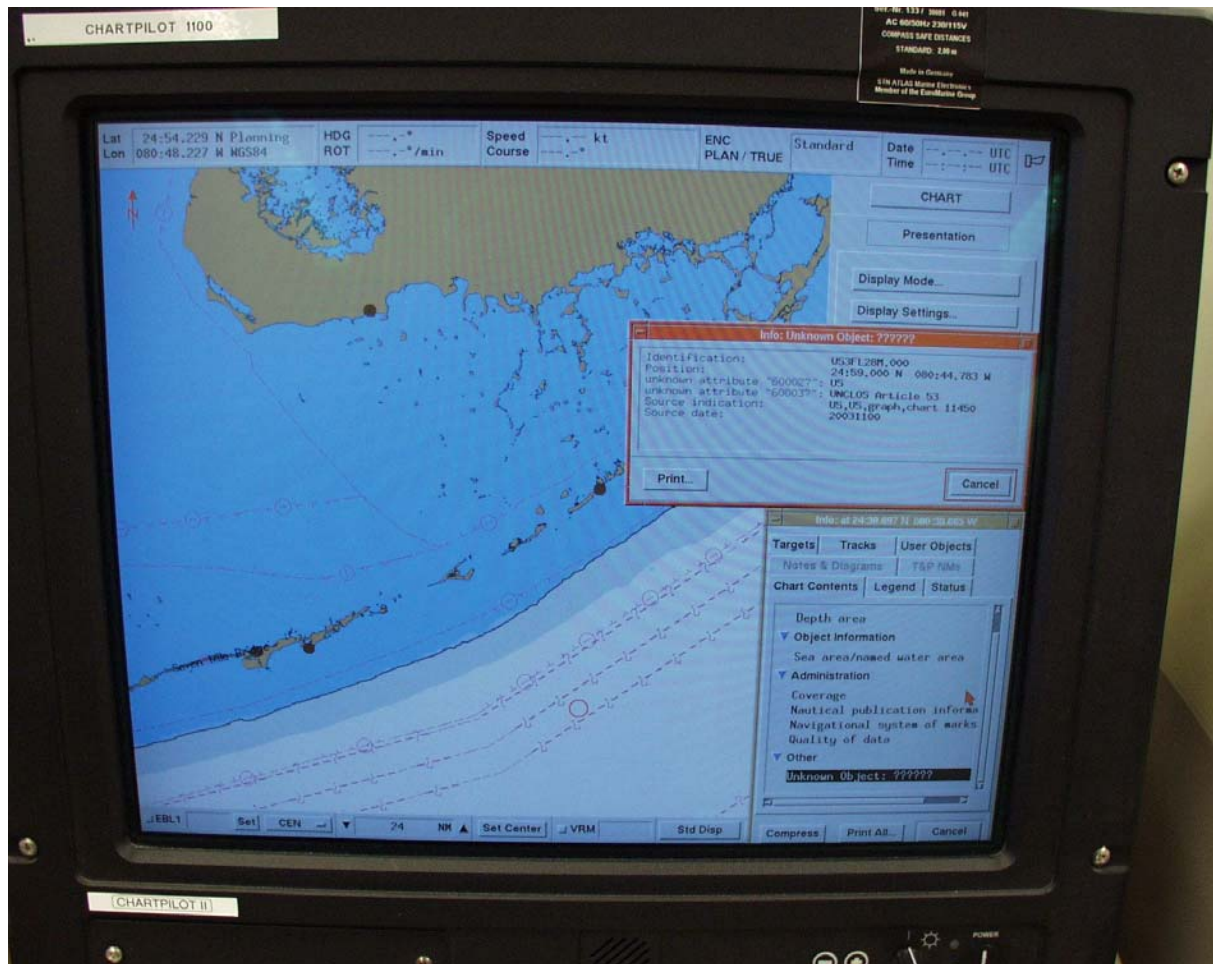
Cell produced errors and warnings when installed.







The ARCSLN object displayed with limit line and question marks.
Feature Info displayed: "Info: Unknown Object: ??????"



The ASLXLN objects displayed with question marks.
Feature Info displayed: "Info: Unknown Object: ??????"



RESARE object displayed as expected.
 CATREA attribute for PSSA displayed as the CATREA number "27unknown value".
 The INFORM text is displayed.



2. NEPTUN

Vers.: 1.5.0, SevenCs Kernel EC2007 Vers.: 5.4.2, PresLib 3.3.0 (1.10.2004)
ATLAS Elektronik GmbH

No problems were reported after cell was installed.

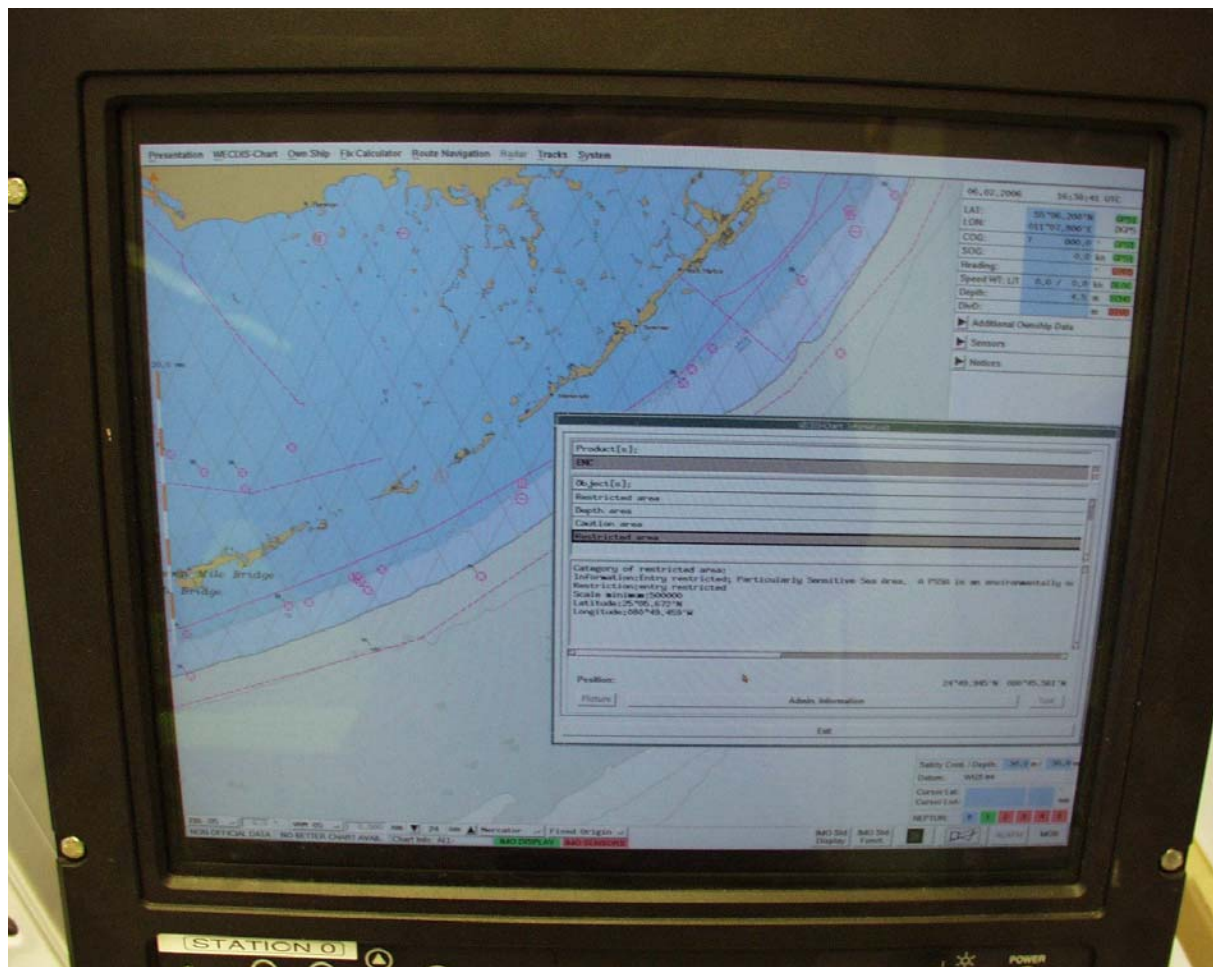


No line or question mark was displayed for ARCSLN and ASLXLN. They also couldn't be found by cursor pick.

RESARE object displayed as expected.

CATREA attribute for PSSA displayed as an empty field.

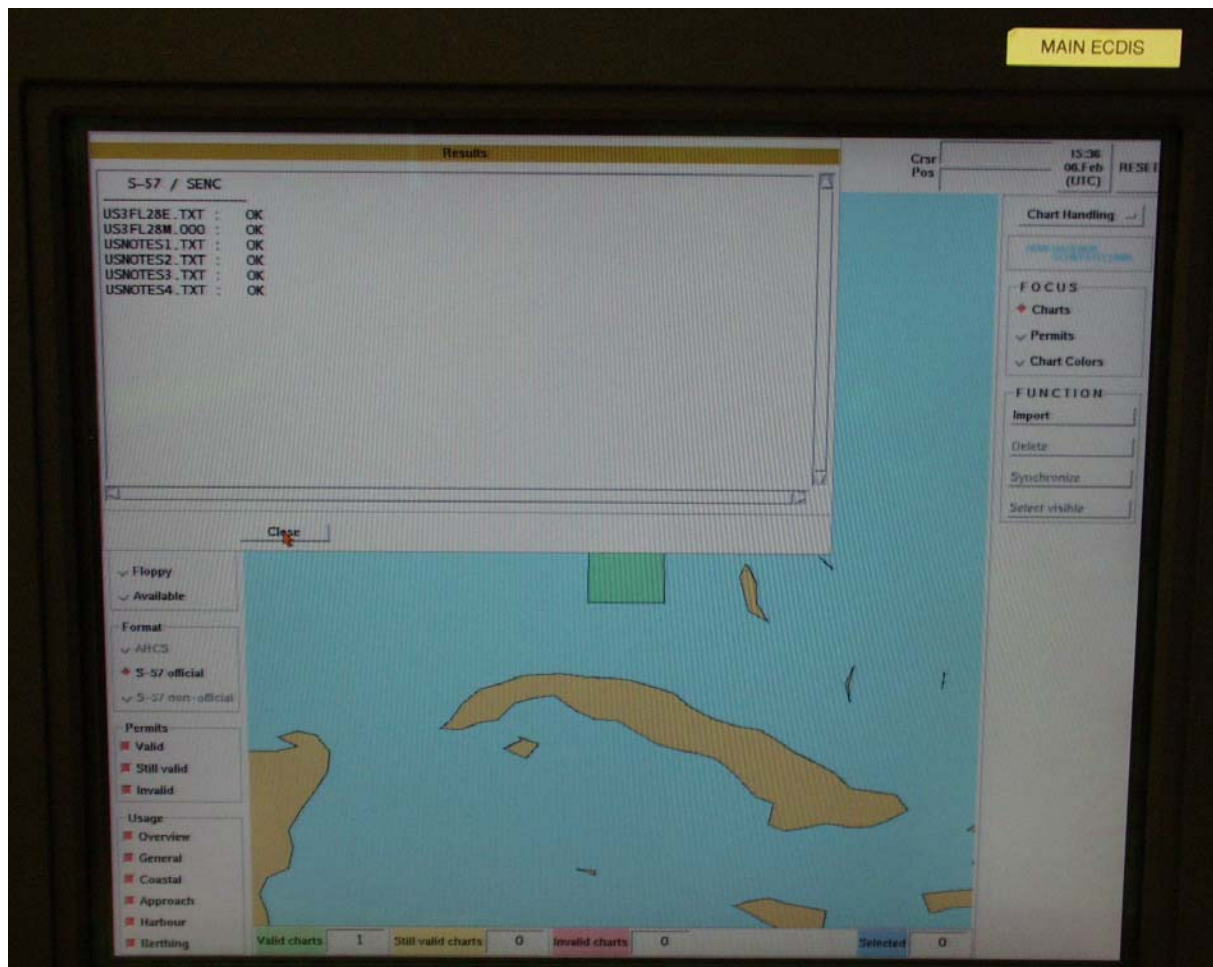
The INFORM text is displayed.



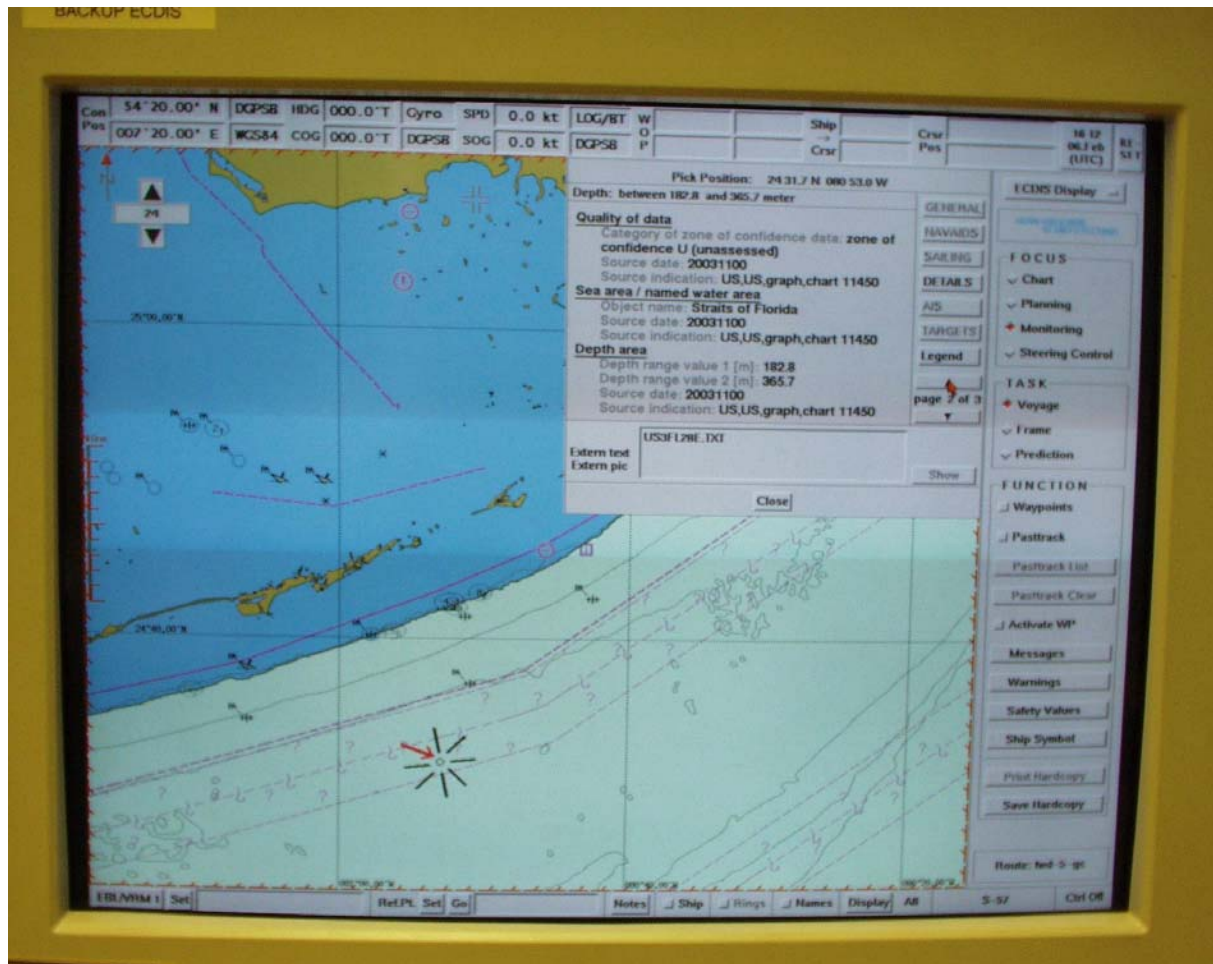
3. ECDIS 2000

Vers.: 4.1.0, SevenCs Kernel EC2007 Vers.: 5.0, PresLib 3.2.3 (5.2.2002)
HDW-Hagenuk Schiffstechnik GmbH

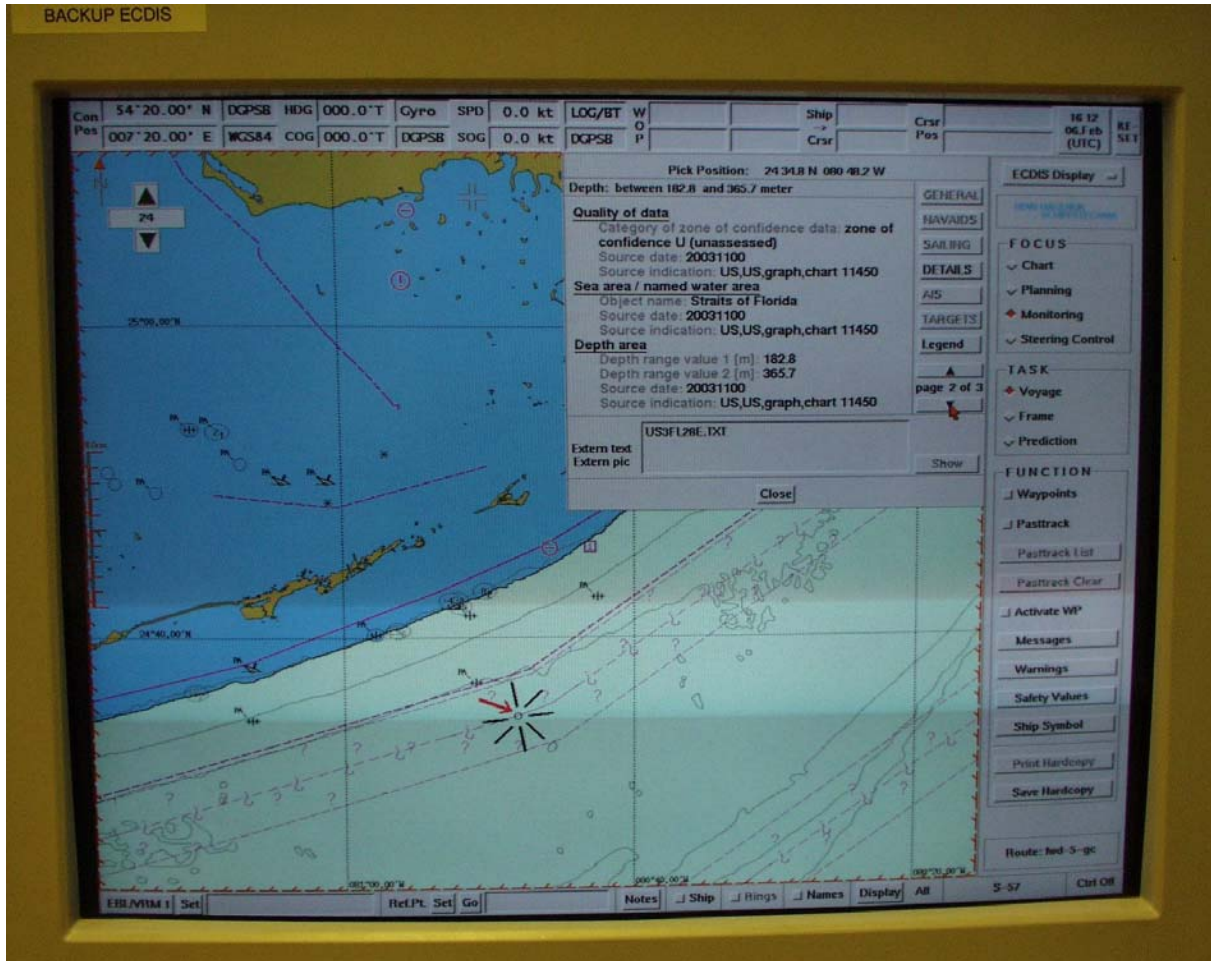
No problems were reported after cell was installed.



The ARCSLN object displayed with limit line and question marks. Object couldn't be found by cursor pick.

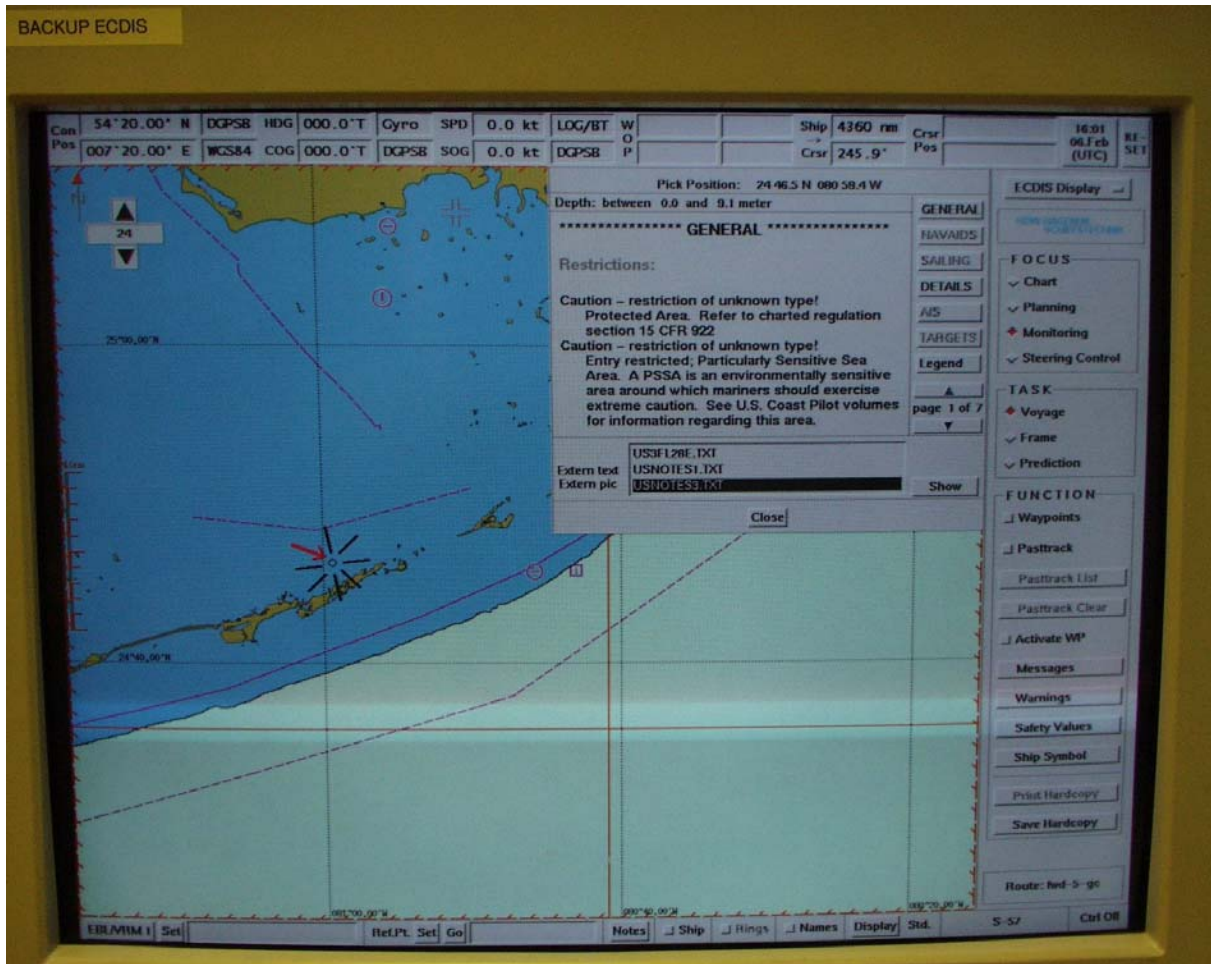


The ASLXLN object displayed with question marks. Object couldn't be found by cursor pick.





RESARE object displayed as expected.
System comes up with a caution that there is a restriction of unknown type.
The INFORM text is displayed.

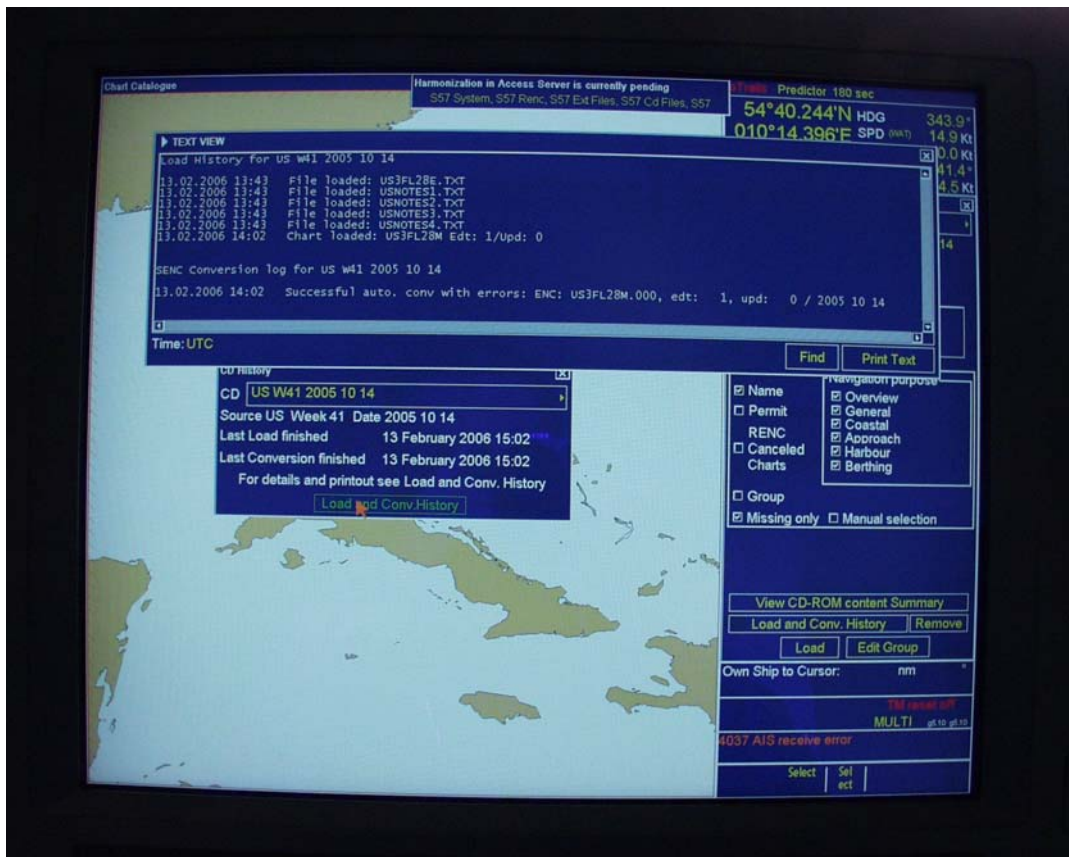
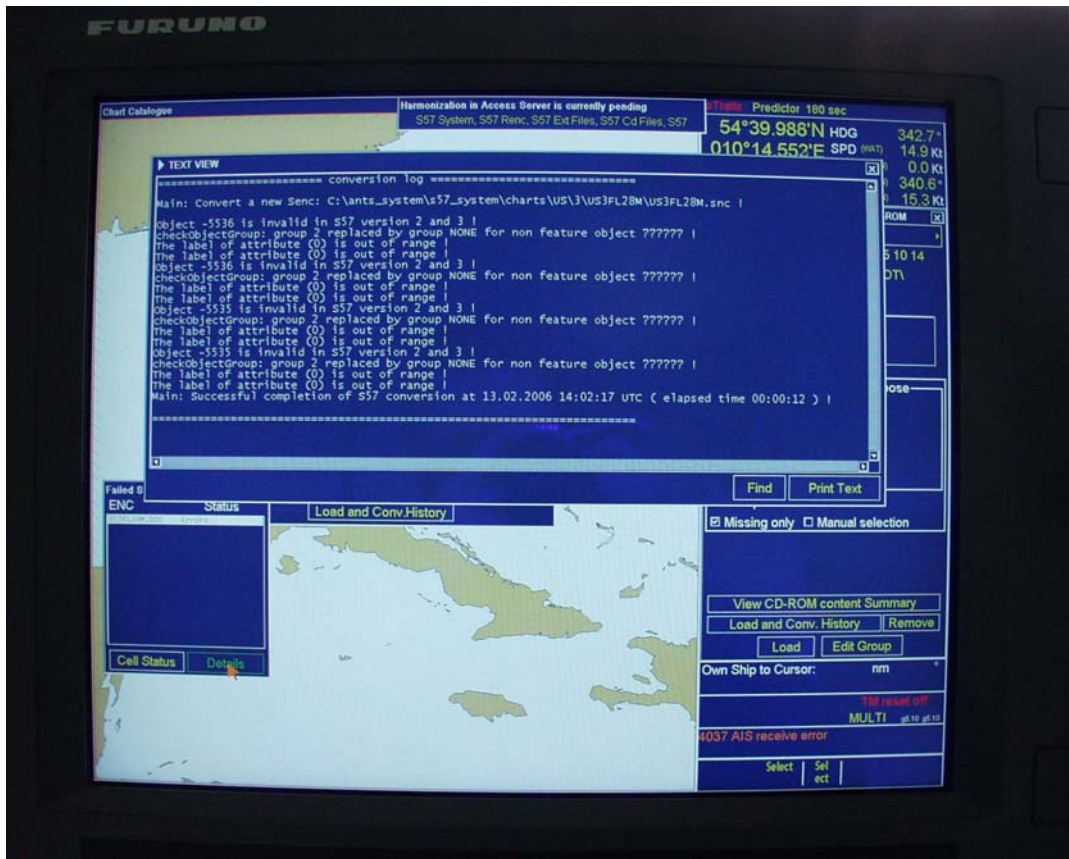


4. EC 1000C

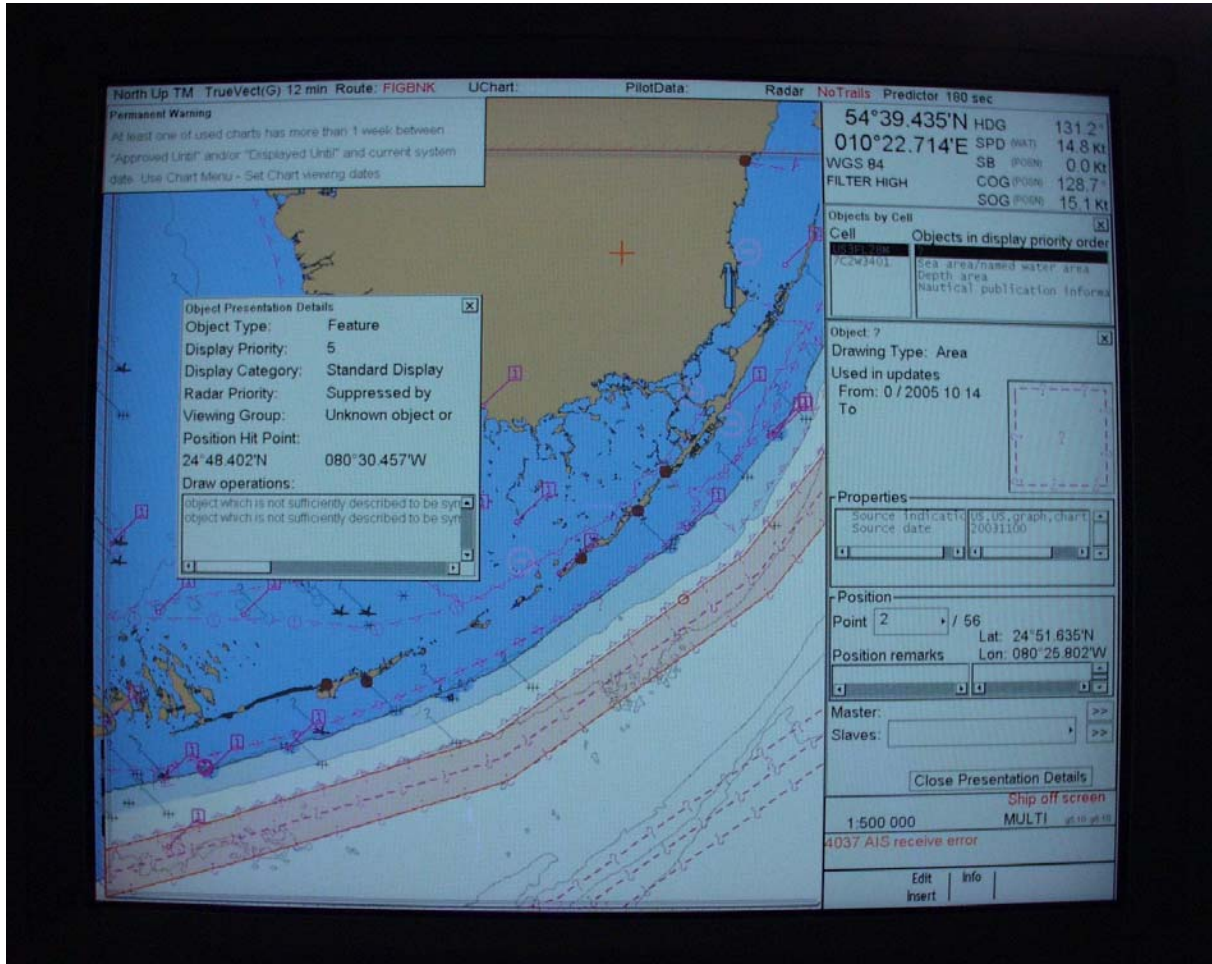
Vers.: 5.10, Own Kernel, PresLib 3.3
FURUNO Finland Oy

Cell produced errors when installed

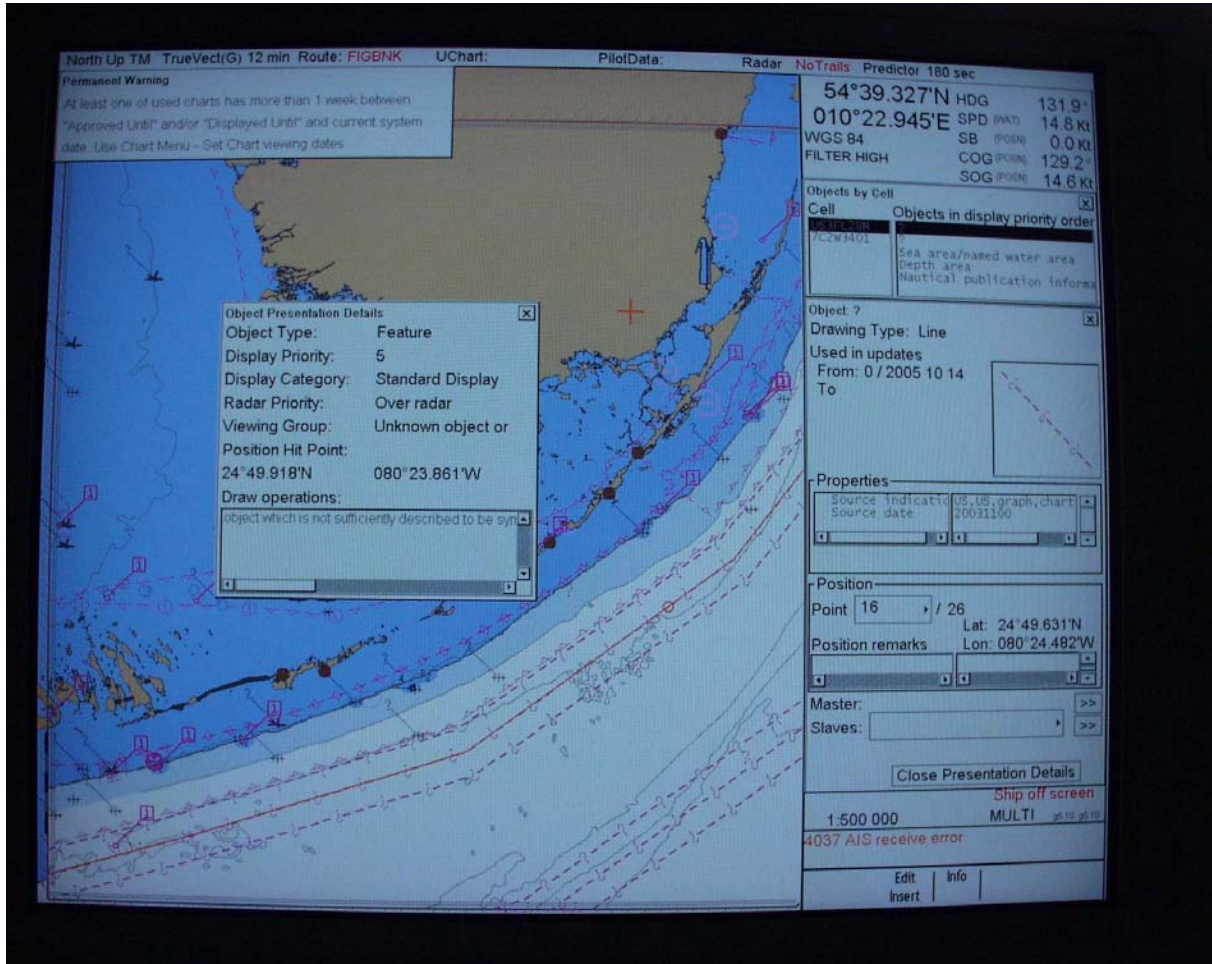




The ARCSLN object displayed with limit line and question marks.
 Feature Info displayed: "Viewing Group: Unknown Object or".
 System also gives an information „object which is not sufficiently described to be sym...“.



The ASLXLN object displayed with question marks.
 Feature Info displayed: “Viewing Group: Unknown Object or”
 System also gives an information „object which is not sufficiently described to be sym...“.



RESARE object displayed as expected.

