

19th CHRIS MEETING
Rotterdam, Netherlands, 5-9 November 2007

PRIMAR report on the level of ENC use on board SOLAS vessels
(Action from CHRIS 18 and ESF 2)

Introduction

This report aims to track the level of ENC use on board SOLAS vessels based on the statistics related to the growth of the PRIMAR ENC service over a period of time.

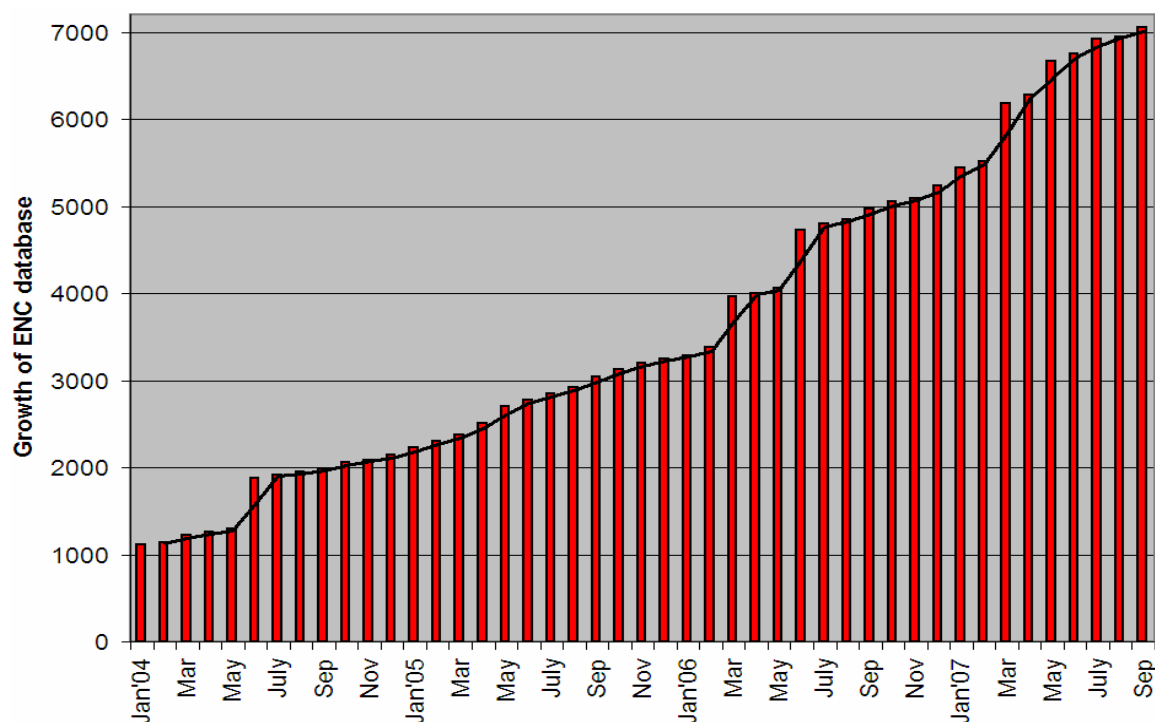
The analysis is based on the following two criteria which are considered indicative of the extent of ENC use:

- Number of ENCs per vessel
- Number of subscriptions per ENC

1. Growth of the ENC database

The number of ENCs in PRIMAR database has grown steadily as shown in the figure 1. Since January 2004 this number has increased from 1115 to 7058. The database has doubled in size in the past 18 months.

Figure 1

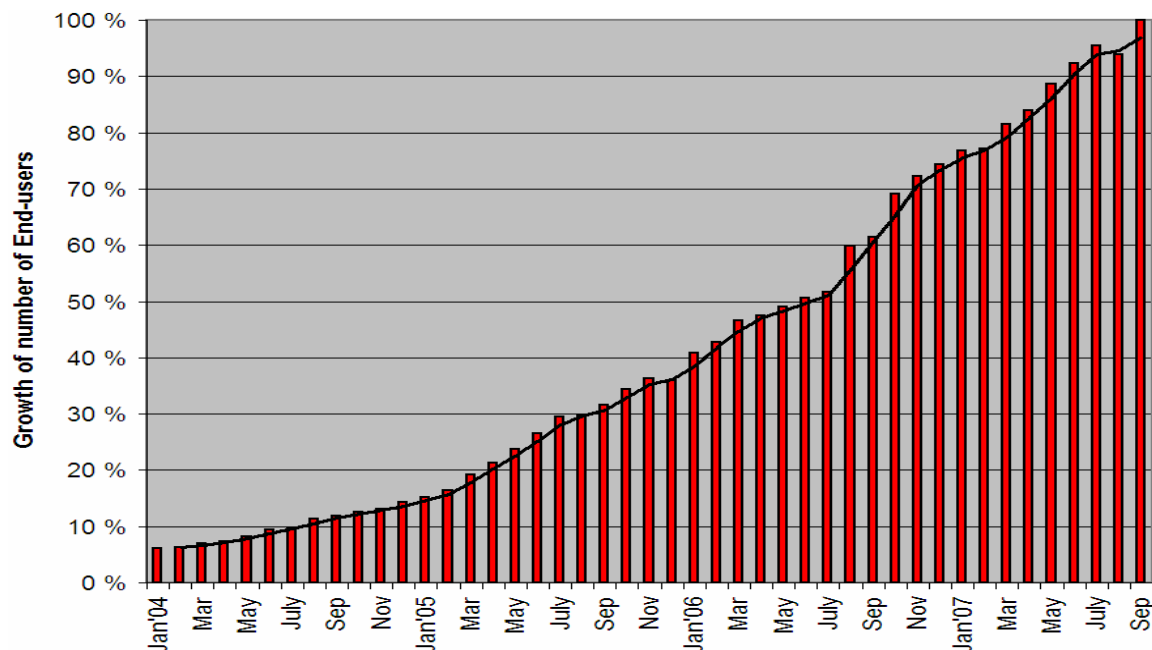


2. Growth of the subscriber base

The number of end-users in PRIMAR ENC service has increased in close correlation with the ENC database. The number has increased over 15 times since January 2004.

Fifty percent of the present number of end-users were added in the past 15 months alone, which underscores the rapid growth experienced by PRIMAR.

Figure 2



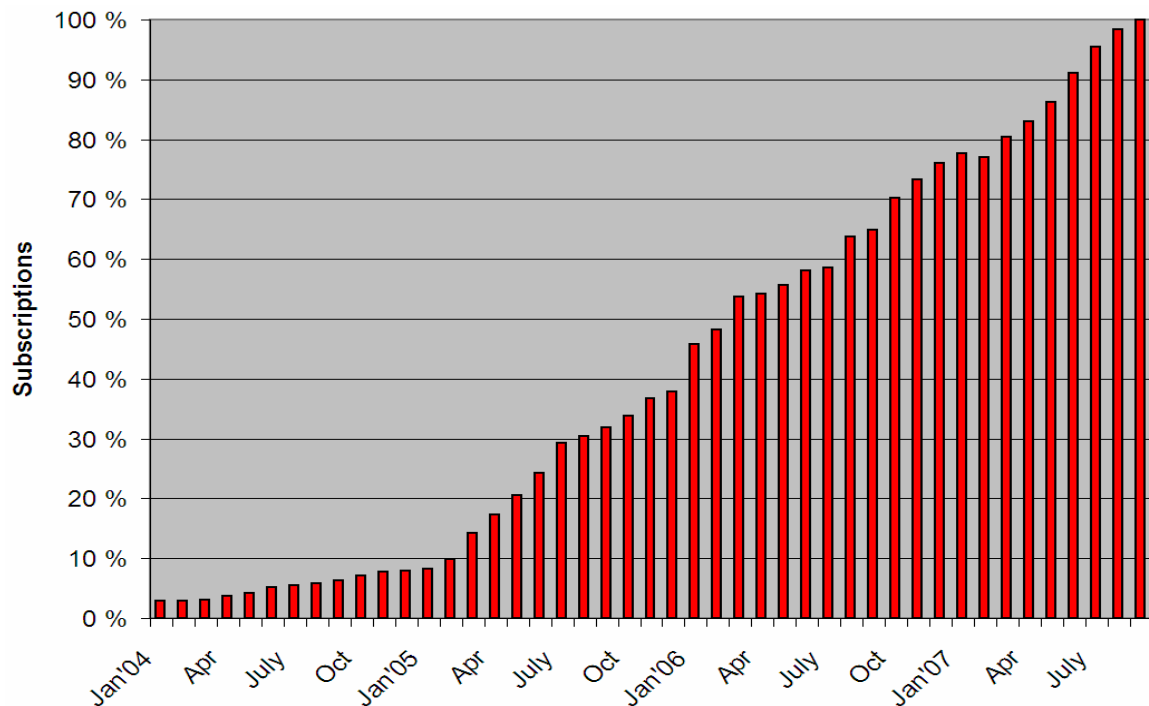
3. Increase in subscriptions

Figure 3 delineates the growth achieved by PRIMAR ENC service in terms of number of subscriptions.

A slow rate of growth until March 2005 was followed by a significant rise in the number of ENC subscriptions thereafter. The rate of growth has been remarkably uniform since March 2005 as shown in the graph.

Overall, the number of subscriptions has increased 33 times since January 2004.

Figure 3



4. Level of ENC use

To measure the level of ENC use in statistical terms two criteria were found to be the most relevant – number of subscriptions per vessel and number of subscriptions per ENC.

4.1 Number of subscriptions per vessel

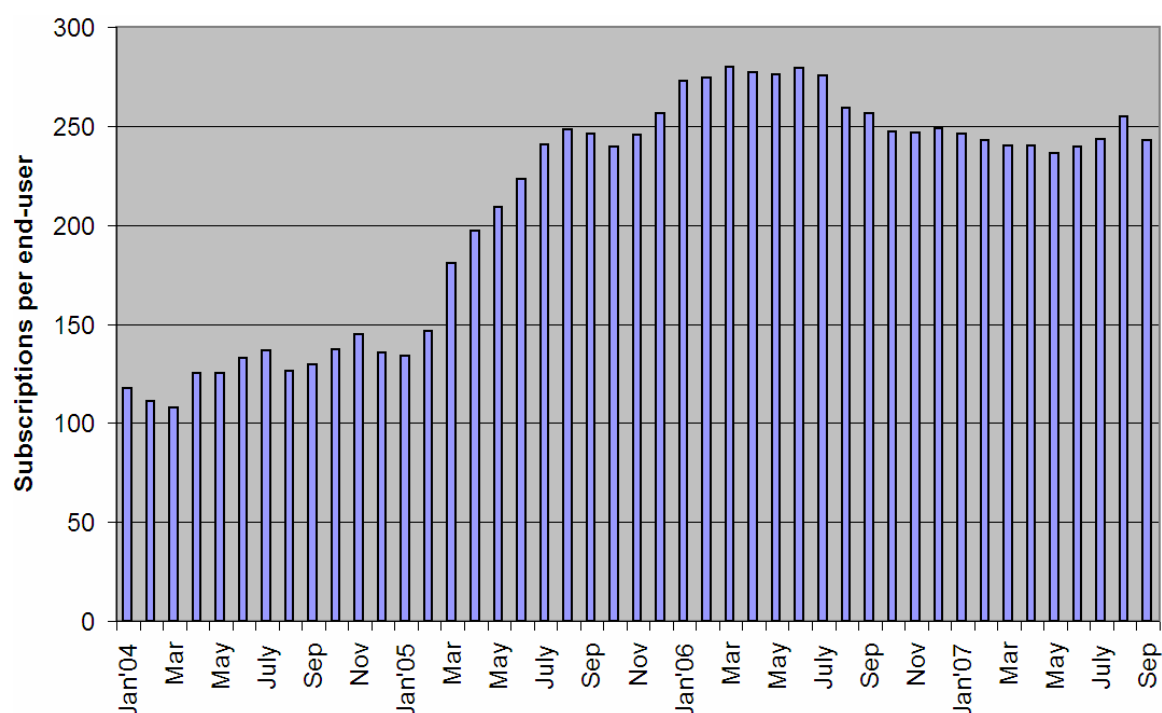
The number of subscriptions per vessel indicates the impact of the growth of worldwide ENC coverage.

The number of subscriptions per end user rose steadily up to 279 until June 2005 and then showed a slight decline and maintained a level at around 245 since the beginning of 2007.

The decline followed by the saturation was primarily caused by the significant rise in the number of vessels between June 2006 and September 2007 as compared to the increase in the number of subscriptions during the same period.

The number of end users increased by 98% during this period whereas the number of subscriptions increased by 72%.

Figure 4



4.2 Number of subscriptions per ENC

This number gives a good indication of the expansion of the subscriber base as well as of a growing trend among mariners to use the official electronic charts for navigation.

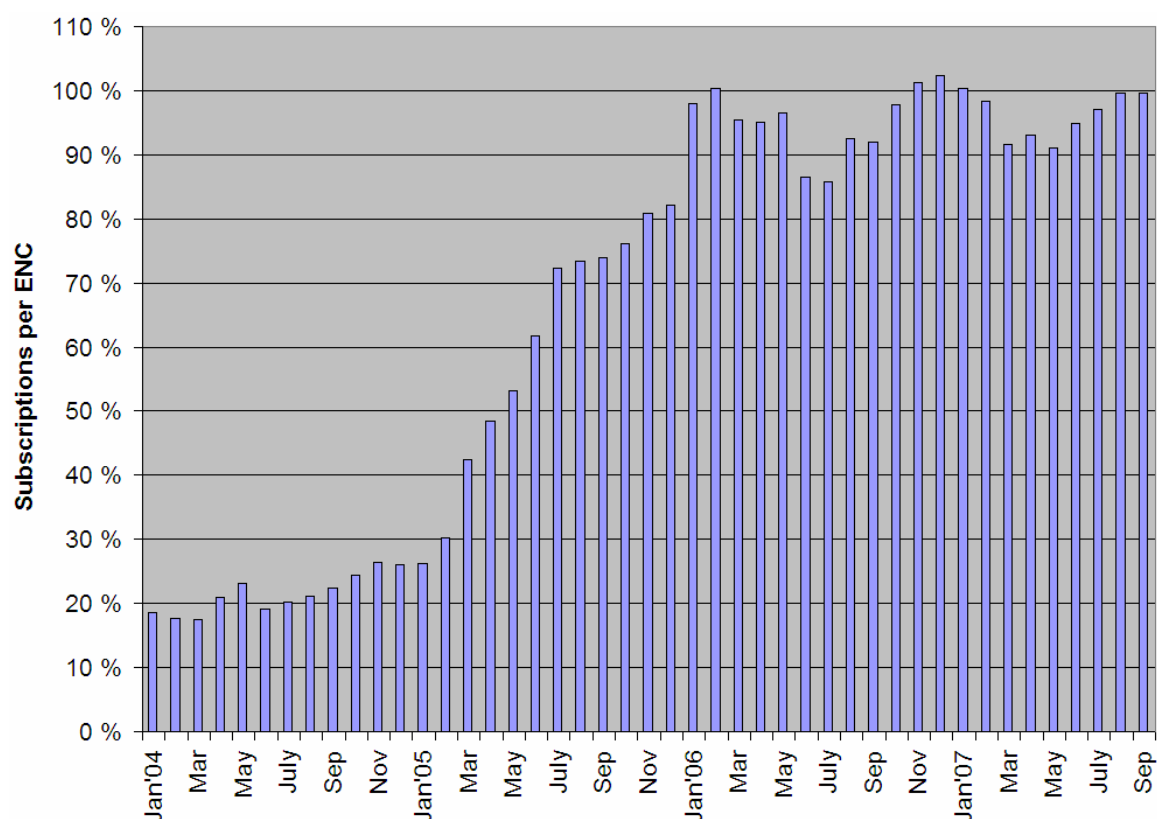
Between March 2005 and March 2006 the number of subscriptions per ENC increased rapidly; reached a peak in December 2006 and has stayed at that level since then.

Figure 5 describes the development over a period of time.

The number has stagnated since the beginning of 2007 as the rate of growth of the ENC database has slightly exceeded the rate of growth of subscriptions in the past nine months.

From December 2006 onwards the number of subscriptions has increased by 31%, whereas the ENC database has grown by 35% during the same period.

Figure 5



Summary

PRIMAR ENC service has experienced a significant growth in recent years in terms of ENC database, number of end-users, and number of subscriptions. The rate of growth has increased significantly since 2006.

The subscriber base has increased in close correlation with the improvement in ENC coverage.

There has been steady improvement in the level of ENC use over the years. The numbers that indicate the level of use are already substantial and showing signs of further growth in future.