

Colours & Symbols Maintenance Working Group

Report to CHRIS20

Niteroi, November 2008

Dr. Mathias Jonas, Chair CSMWG





Annual Meeting and Participation

CSMWG18 Meeting
7. -9. May 2008,
including
3rd combined
TSMAD/CSMWG
Meeting
in Cape Town,
South Africa
hosted by SANHO

Chairman: Mathias JONAS (Germany)

Vice Chair: Julia POWELL (USA)

Tech. Co-ordinator: vacant

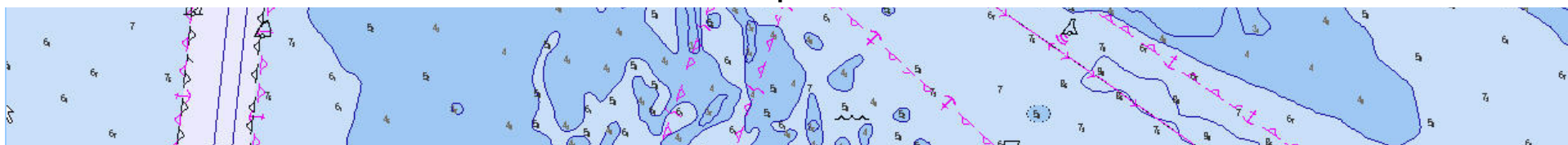
Secretary (acting): Richard Coombes (UK)

Participating members:

Australia, Canada, Denmark, Finland,
France, Germany, Norway, South Africa,
UK, USA

Non-IHO:

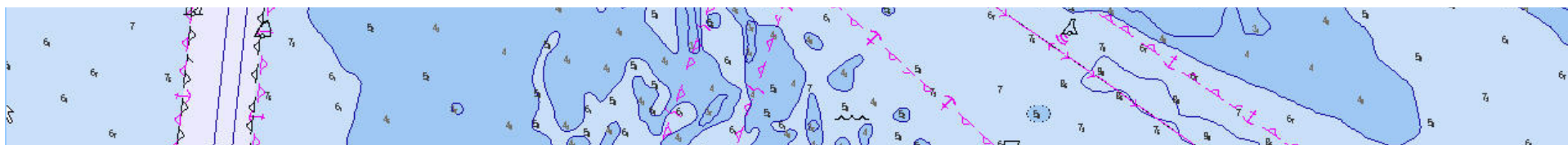
CARIS, Furuno Finland, GEOMOD, IC-ENC,
IIC, Jeppesen Marine, SevenCs, Transas
Group





Work Program A: Maintain S-52, App.2 and Annex A

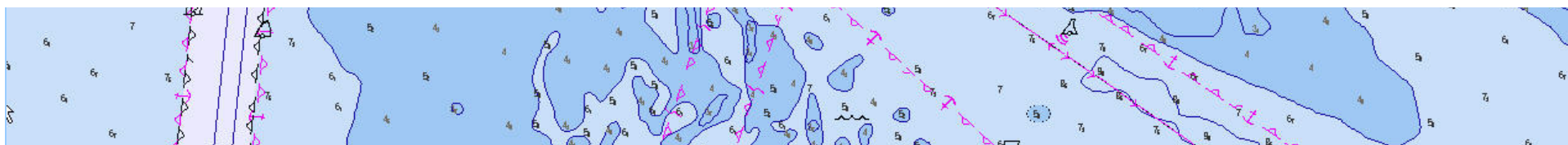
- Issue S-52, App.2 Ed. 4.3 & Annex A Presentation Library Ed.3.4 by Application of Maintenance Doc. 5 & 6 completed by January 2008
- to be set in force coincidentally with revised IMO ECDIS PS by 1. January 2009
- HOs may remove linear depth areas from their new Editions of ENC's after that date
- further maintenance of PresLib by provision of minor amendments and corrections through another Maintenance Doc. 7 (by end of 2008)





Work Program C: Examination of S-52 Main Document

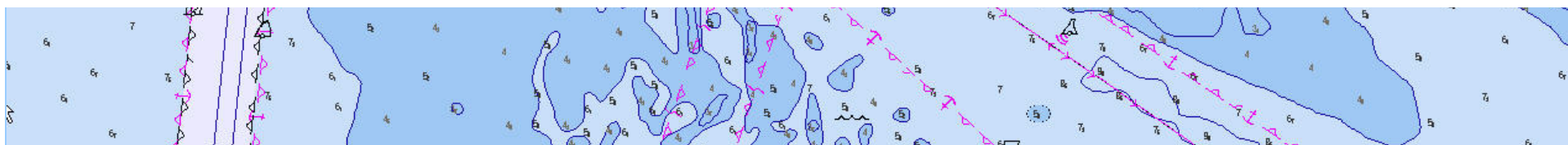
- Operational aspects of S-52 Main Doc & Annexes are now completely absorbed by the revised IMO ECDIS PS as applicable.
- S-52 Main Doc could now undergo a revision to streamline to the core matter of chart presentation.
- The problem: ECDIS Test Standard IEC 61174 references clauses in S-52
- CSMWG is not mandated to maintain S-52 Main Doc





Work Program D: Recommendations for good application practice of S-52 including Annexes

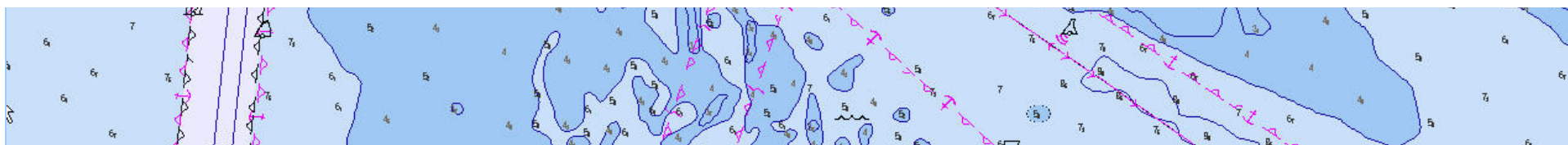
- Covered by “General information about chart presentation on ECDIS display” on IHO website
- A more detailed description in analogy to the INT 1 of paper chart world would be desirable
- US (NOAA and NGA) is taking initiative to enhance CHART 1 to include the additional column containing additional references to ENC symbols.





Work Program E: Use of SCAMIN and overscale indication

- Statement: Application of SCAMIN is a cartographic decision whereas IMO Base display category only prevents suppression of objects by user interrogation
- Implementation of automatable rules for SCAMINification into ECDIS was rejected as unrealistic
- Overall, S-101 should address SCAMIN and may do better
- no progress with overscale indication (jailhouse pattern)

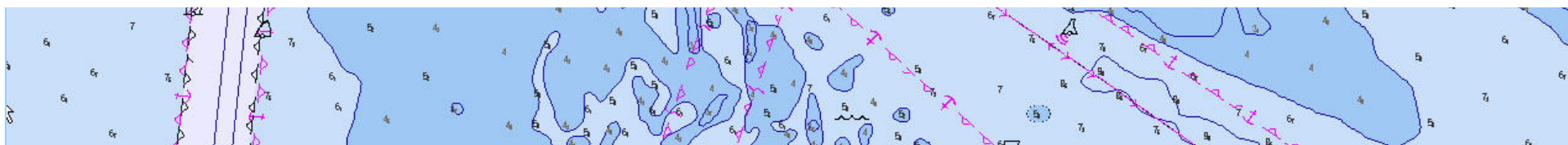




Work Program F: Implications of S-100/S-101 to S-52 regulations

Transition from S-52 Presentation to S-100 Portrayal

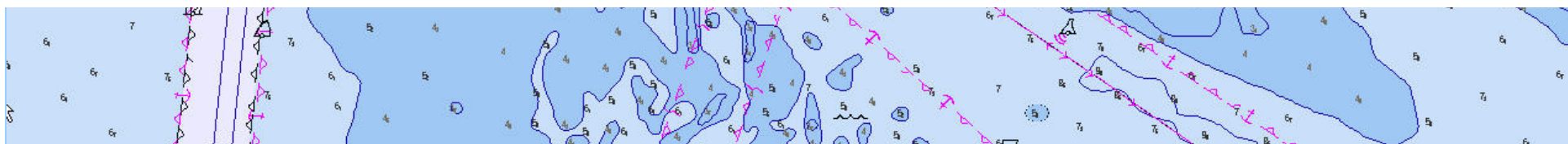
- Set up of S-100 Portrayal register
 - Finalisation of S-100 Portrayal components (ISO 19117)
 - Migrate Pres Lib to S-100 Portrayal Register and S-101 Portrayal Catalogue including:
 - discontinuation of simplified point symbols
 - translation of lookup tables into machine readable XML
 - review of Conditional Symbology Procedures and Colour tables
- >>>>> Plug and play portrayal catalogue, easy to maintain





Work Program G & H: Harmonisation of cell loading and pick report presentation

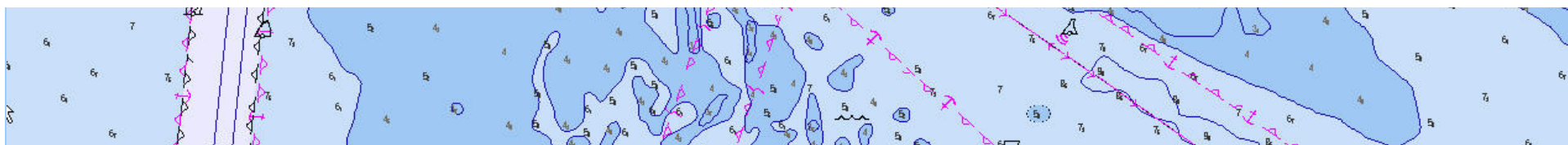
- Cell loading: contribution to S-101 discussion through joint meetings with TSMAD and Stakeholders Workshop
- Review of existing recommendations of displaying the pick report in S-52, App.2, Annex A PL Edition 3.4 aiming to the separate provision as Guidelines (Annex B of this report)





Work Program I: Revise ECDIS Chart 1 to PL Edition 3.4

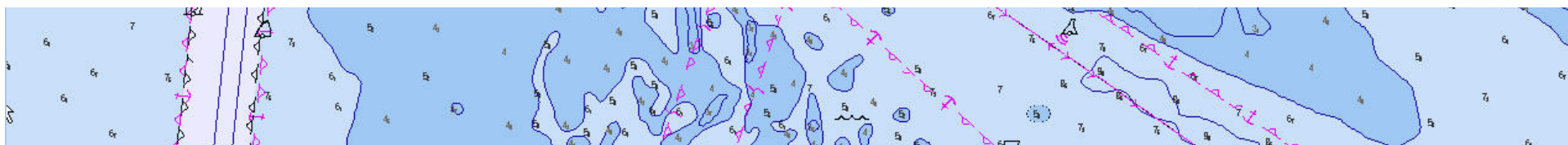
- Symbols for object and attribute enhancements of S-57 Edition 3.1.1 have become part of PL Edition 3.4, January 2008
- Re-Issue of ECDIS Chart 1 using SYMINS mechanism prepared under contract (SevenCs)
- Minor mistakes detected in the meantime about to be corrected (November 2008)





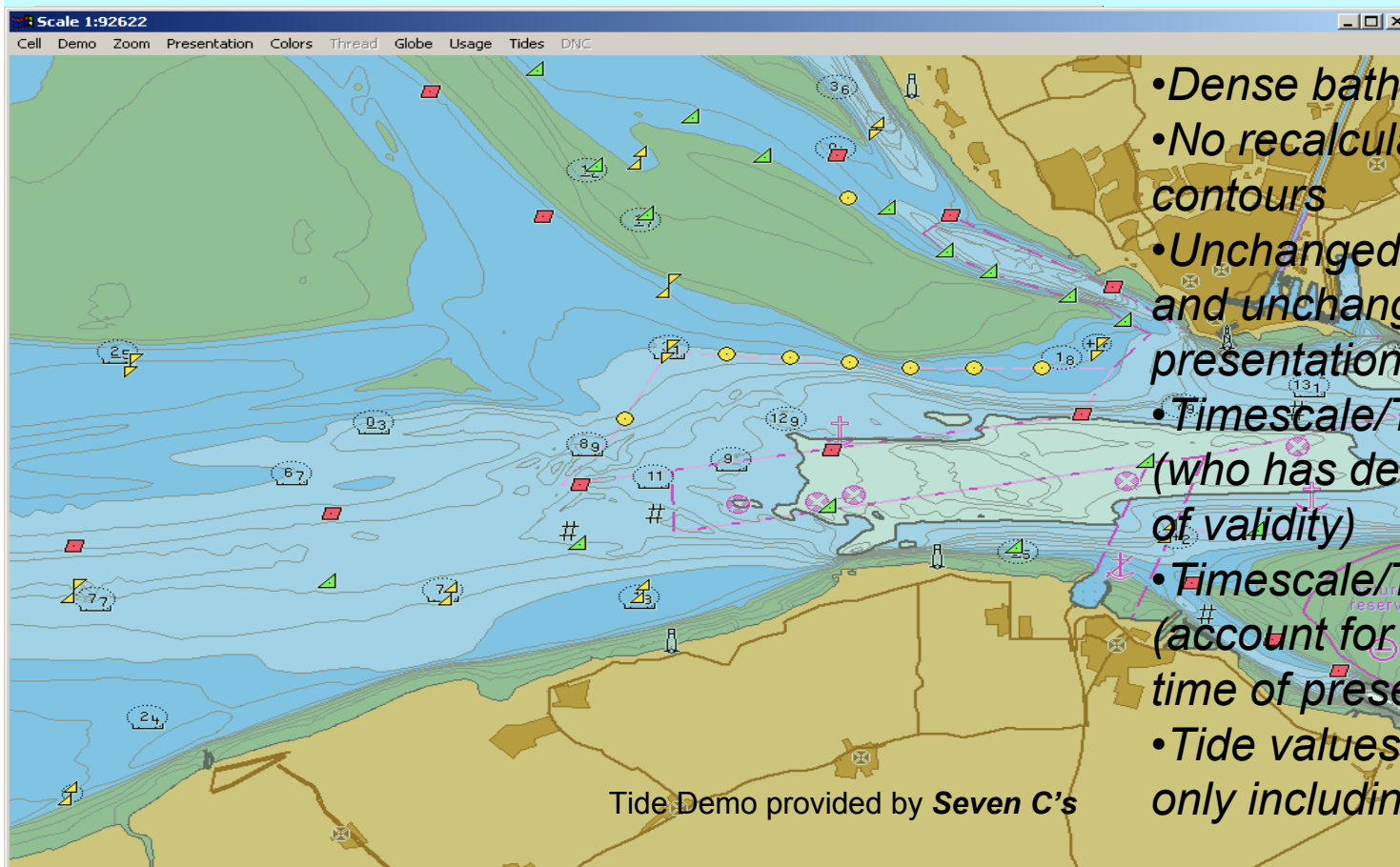
CHRIS is invited to note this report and:

- to endorse the stop of coding of the linear depth areas from 1. January 2009
 - to advice how to revise S-52 Main Document
 - to give directions for the further development of Pick Report Presentation Guidelines
 - to endorse the transition plan of S-52 PresLib to S-100/S-101 assisted by external (paid) contractor
 - to endorse the renaming of CSMWG to Digital Information Portrayal Working Group - DIPWG
-





Example for tide adjusted ECDIS-display



- Dense bathymetry ≤ 1 meter
- No recalculation of depth contours
- Unchanged safety contour value and unchanged safety contour presentation
- Timescale/Tidal Model Indicator (who has delivered the data/are of validity)
- Timescale/Tide Value Indicator (account for time zone, point in time of presented tide values)
- Tide values applied for display only including vertical reference.

