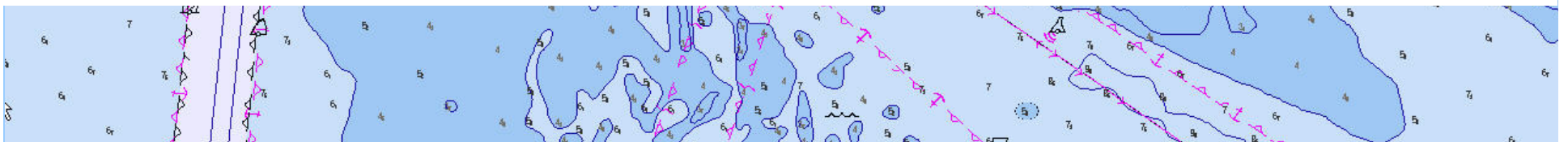




MSDIWG Report to CHRIS-20

3-7 November 2008
Niteroi, Rio de Janeiro

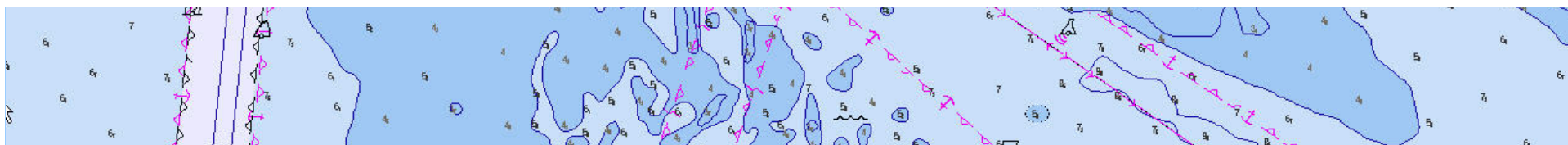
John Pepper - UKHO [Chair]





Objectives for 2008

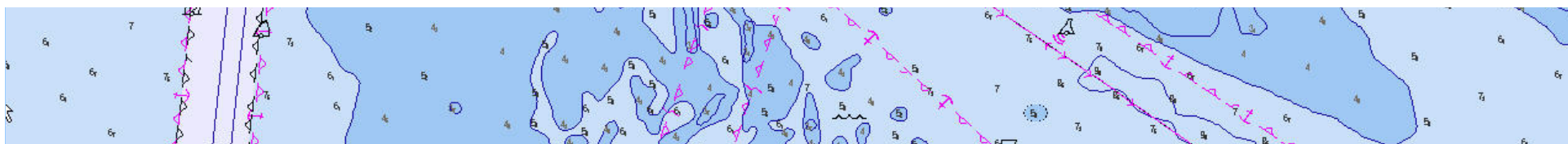
- To prepare, undertake and complete an audit of IHO Member States to establish their level of knowledge and understanding of the benefit of supporting National SDI initiatives and their capability in supporting the development of Marine SDI. **ACHIEVED**
- To analyse the results of 1 and establish the benchmark for future IHO support and / or capacity building required and to assist in the development of the SDI IHO Guide. **ACHIEVED**
- To provide the preliminary IHO SDI Guide for Member States incorporating necessary step by step approach to SDI. **PARTLY ACHIEVED [see 2009 plan]**
- To provide, to CHRIS Meeting 20, a report of WG activities to date and to recommend (if necessary) an extension to the life of the WG in the light of results and / or progress achieved in the 2008 work programme. **ACHIEVED**





What is MSDI?

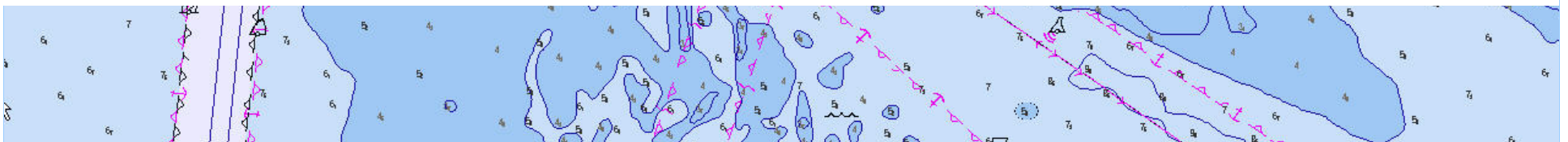
- A framework which provides for the integrated management of spatial data and information in the marine [maritime] environment covering processes such as:
 - technology
 - policy
 - standards
 - data
 - people
 - organisations





Research preparation

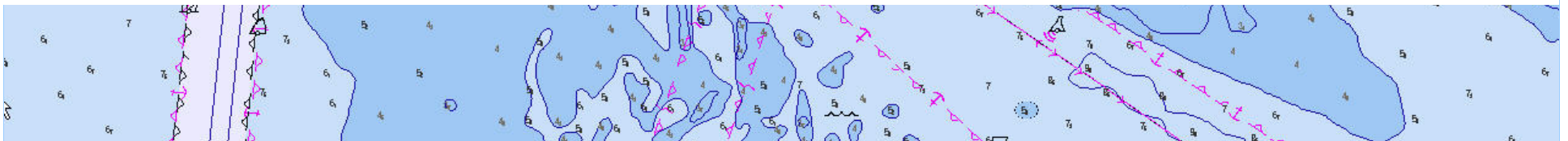
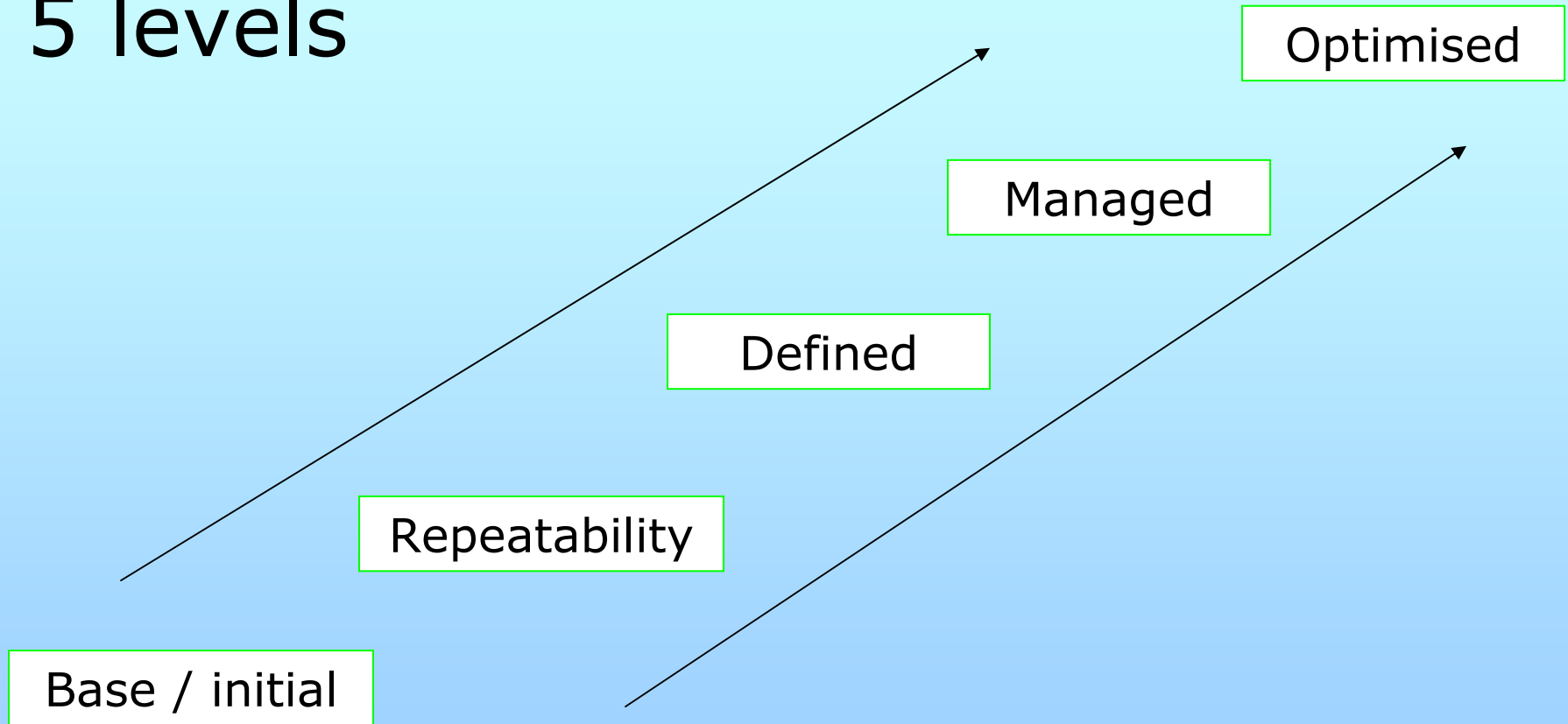
- E-mail questionnaire for e-mail or fax return to IHB
- 'Maturity matrix' plus 3 supporting questions covering topics:
 - Current status (2008) of MSDI
 - Aspirations regarding status in 2011
 - Plans / activities to reach 2011 status
 - Barriers to achieving 2011 status
 - IHO role and assistance required





'Maturity matrix' - levels

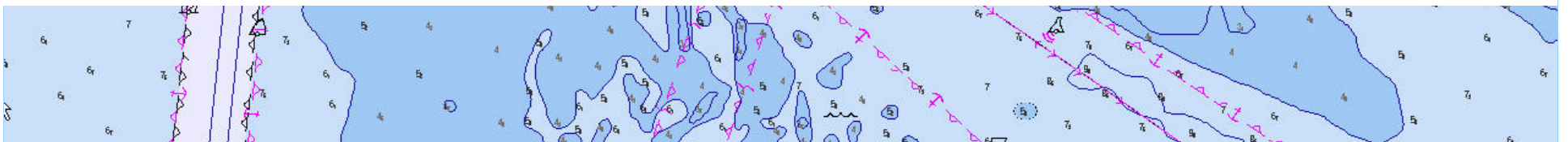
5 levels





Responses and analysis

- 43 countries responded – good cross-section around the world, allowing groupings for analysis purposes
- Matrix - a numbers-based analysis
- Non-matrix questions - open ended answers were grouped, and a set of generic phrases developed against which to code the responses
- A full set of these comments and their generic codes are available

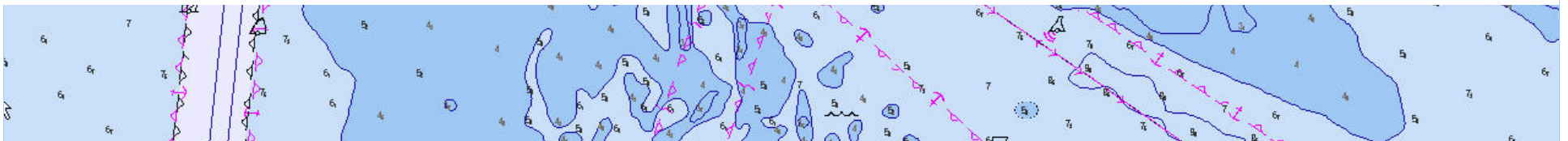




'Maturity matrix' - clusters

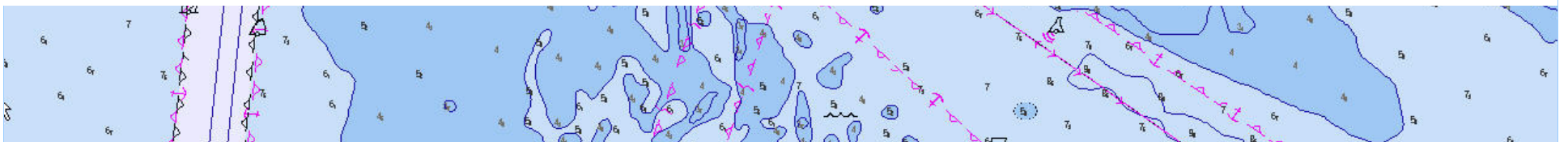
5 clusters:

- Policy intent / Strategy on NSDI / MSDI
- People and communications
- Data management
- Data frameworks and standards
- Data dissemination





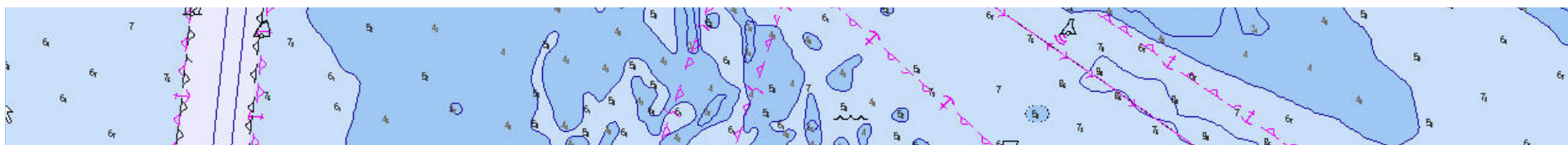
Summary outcomes of responses





Activities/plans to develop an MSDI [1]

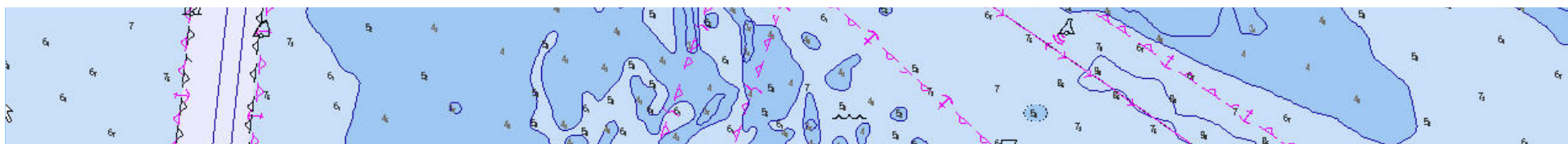
- Several countries stated that MSDI is / will be a part of the NSDI
- Majority have set up or are setting up committees or a designated authority to develop the policy / strategy
- Partnerships with bodies / authorities including data owners and users are being formed
- Development of the database is a key activity
- Database development planned or underway with major activities relating to digitising and integration





Activities/plans to develop an MSDI [2]

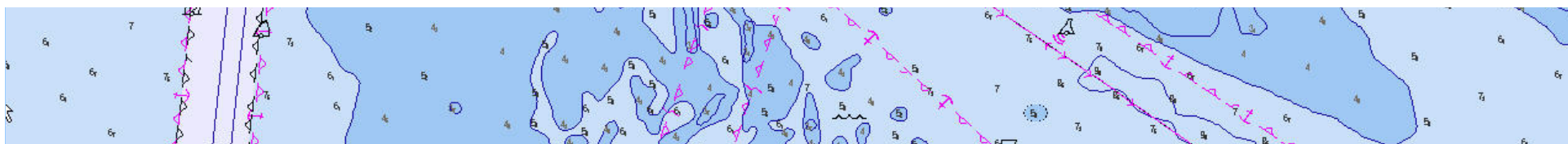
- Most countries are either already working to or looking to work within international or national standards, [e.g S57/S100, ISO 19100 / 19115 / TC211], and those from consortia and International bodies
- For Europe, the INSPIRE Directive is an important driver of the creation of a NSDI / MSDI. INSPIRE helps prioritise themes and work packages
- Data dissemination is planned to be primarily via the web, through new portal developments and use of WMS/WFS





Barriers to MSDI progress [1]

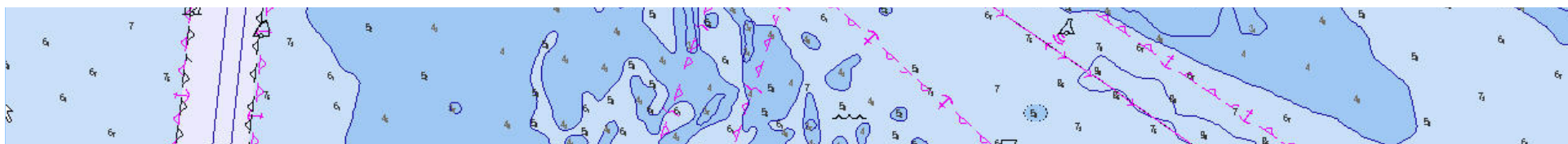
- Resources
- Funding
- “Policy/priorities/politics (PPP)”
- Training of personnel is key
- Effective communication
- Organisational structure
- Culture





Barriers to progress [2]

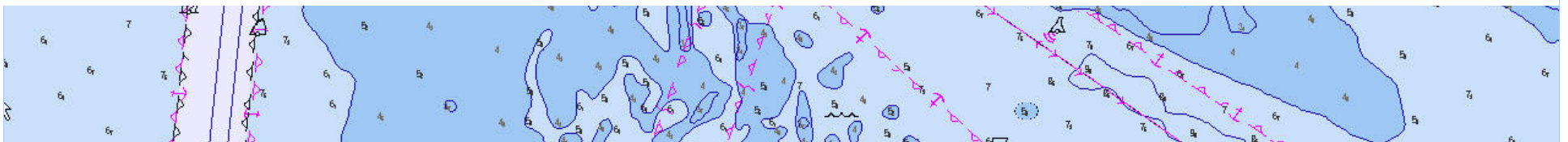
- **No agreed policy** or framework
- **No common spatial data**
- **Lack of visibility** - no responsibility / responsible MSDI expert / focal point
- **Barriers between agencies** – historical, political, bureaucratic, and national versus 'local' conflicts.
- **Priorities different** across departments; co-operation and co-ordination between stakeholders poor.





Barriers to progress [3]

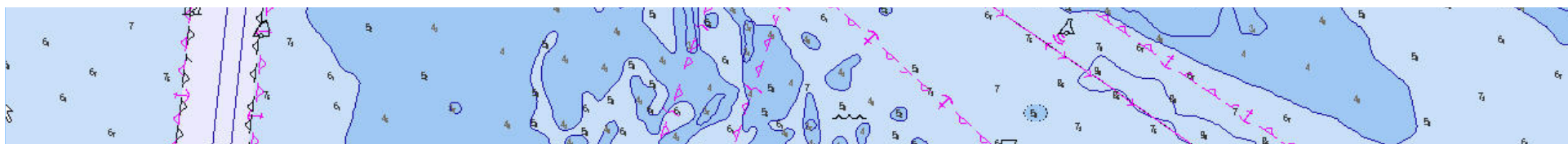
- **Data held by different organisations** and at different levels – need for harmonisation and interoperability
- **Copyright**, IPR, licensing
- **Cost of data** versus “free” data,
- Basic geographic data with no legal obligations versus navigational geographic data with legal implications
- **Policy issues** re: distributing digital data via the internet





Conclusions

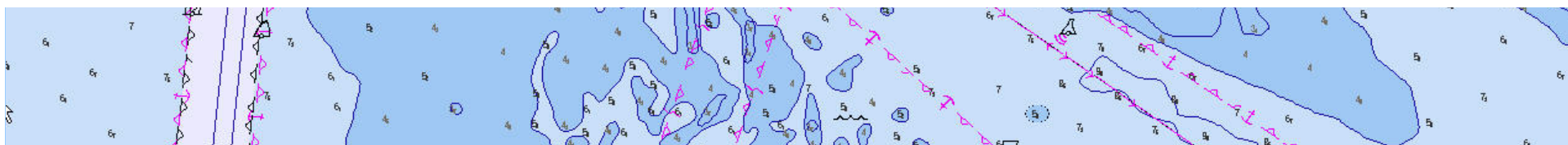
- There is a clear need for assistance
- Developed MS's versus developing MS's [regional differences]
- Less emphasis on developing MSDI /NSDI in less developed MS's
- Resources are at a premium across most HO's & MS level
- IHO role crucial to develop understanding of and confidence in MSDI/NSDI.
- IHO should define its role and the possible help it can give to Member States





The Way Forward – The IHO Role?

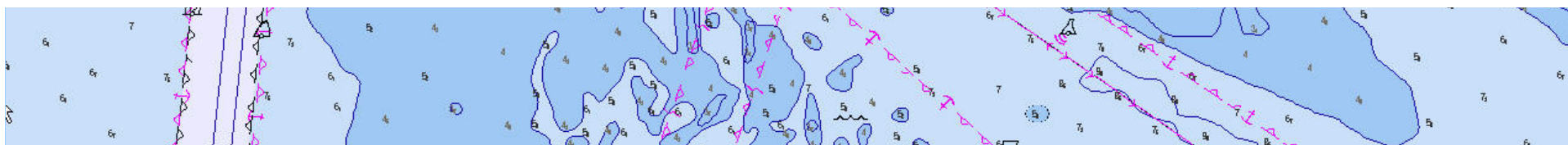
- Organise and facilitate regional MSDI workshops
- Produce an MSDI “cook book” explaining:
 - what is MSDI?
 - guidelines and procedures
 - how to plan/develop an MSDI - include “good examples”, templates / practical references
 - how to sustain MSDI
 - value and benefit to stakeholders
- Set up and manage an IHO MSDI web forum (success will depend on active participation and a willingness to share knowledge)
- Produce, disseminate and manage MSDI e-training
- Facilitation of training and knowledge transfer





Recommendations to CHRIS-20

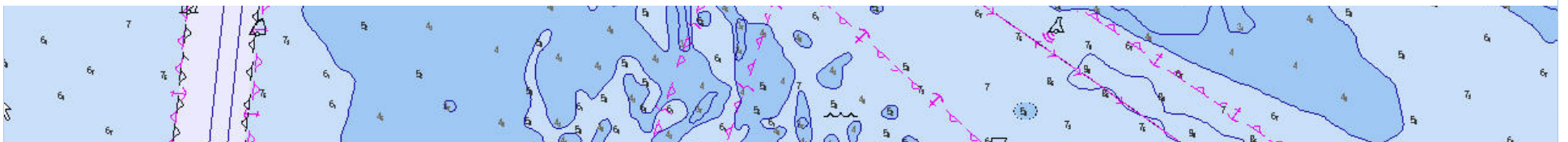
- IHO develops its SDI policy towards Member States as part of its enhanced mission particularly aimed at Member States who, in their responses indicated a low level of maturity but also those Member States for whom no information has been received.
- IHO develops, through the MSDIWG, a definitive SDI "Cook Book" to assist IHO Member States to be better prepared to develop and / or join MSDI at their National or Regional level.
- IHO develops its SDI capacity building plan [e.g. in-country practical training and advice] to provide the necessary skills, knowledge and understanding of key components of SDI as described above.
- IHO considers the development of a web based facility to encourage, knowledge transfer, best practice and on-line guidance and training material.
- MSDI to be a standing agenda item on Regional Hydrographic Commissions in order to monitor and report progress in Member States' MSDI engagement and development. MSDIWG will provide benchmarks against which reporting might be measured.
- IHO, through the CHRIS committee, support the continuation of the work of the MSDIWG in 2009 - 2011 to enable it to deliver the outputs defined at 7.1-7.5.





Actions required of CHRIS-20

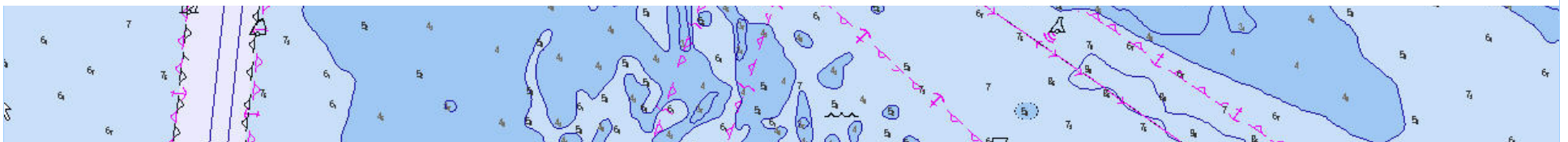
- Approval of the report presented
- Endorse the recommendations made of the MSDIWG





MSDIWG 2009 Plan

- Complete development of IHO “cook book” [work started in Sept 2008]
- Build road map for IHO training/ knowledge transfer programme
 - Design framework for e-training programme [inc: content]
 - Develop best practise examples
 - Develop framework content for IHO portal for discussion groups etc
 - Training methods
- Provide longer term [2009-2012] perspective/options to IHO [MSDI is not short term issue]
- Report completion of WG tasks to EIHC in June 2009





Thank You

www.iho.int

