

**HYDROGRAPHIC SERVICES AND STANDARDS COMMITTEE  
Chair Group Workshop (HSSC-CG)**

**Paris, Saint-Mandé, France, 1 -2 June 2016**

**Logistics Information**

**Meeting venue**

Thanks to the kind invitation of the French Hydrographic Service (SHOM), the meeting of the Chair Group of the Hydrographic Services and Standards Committee (HSSC-CG) will take place at the Pôle Géosciences, in Paris Saint-Mandé, France.

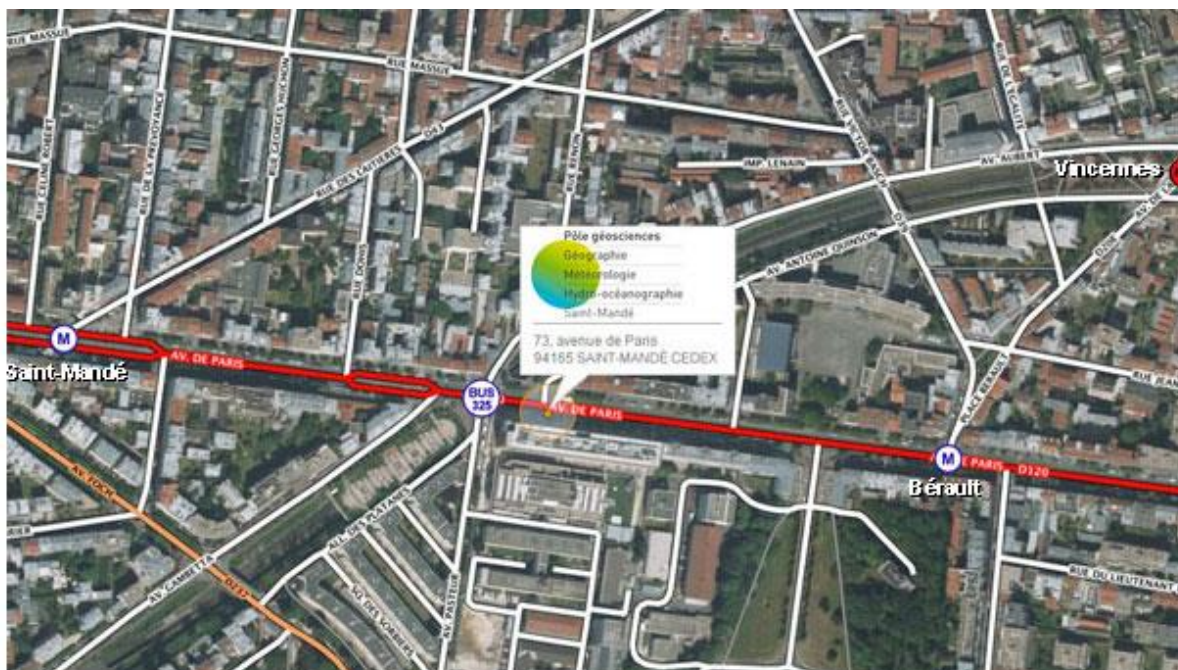
The meeting will last from **1 June, 14:00** to **2 June, 17:00**. For further information, please refer to the HSSC-CG agenda & timetable on the IHO HSSC webpage.

*Pôle Géosciences (venue entrance) – 73 avenue de Paris – 94160 Saint-Mandé*



The Pôle Géosciences is located in Paris Saint-Mandé, in the East of Paris, in a very well served area. Various transport options are available to get to the meeting place:

- Métro Line 1, station *Saint-Mandé* or *Berault*, then 2 minutes' walk to the *Pôle Géosciences*.
- RER line A, station *Vincennes* then 5 minutes' walk to the *Pôle Géosciences*.
- Taxis.



*Pôle Géosciences -73 avenue de Paris – 94160 Saint Mandé (location and access).*

### Transportation to and from Paris airports

There are numerous options to get you from Paris airports to downtown Paris. They depend on your departure/arrival flight:

Please consult: <http://www.aeroportsdeparis.fr/en/passengers/access>

### Accommodation in Paris

Many hotels and accommodation options are available, within close proximity to the *Pôle Géosciences*. Hereafter is a short list of some of them, providing a quick and easy access to the meeting location. You are kindly invited to make your own reservation at your earliest convenience.

Hotel and location	Booking details	Room fees	Access to Pôle Géosciences
<b>Hôtel Holiday Inn</b> 11-15 rue De Lyon, 75012 Paris	Contact : <a href="mailto:re@holidayinnparisbastille.com">re@holidayinnparisbastille.com</a> Tel. (+33) 01 53 02 20 00 <a href="http://www.holidayinn.com">www.holidayinn.com</a>	From €189,50 EUR per night	Métro line 1, station : <i>Gare de Lyon</i> Transport time : 15 min
<b>Hôtel Mercure Gare De Lyon</b> 2 place Louis- Armand, 75012 Paris	Contact : <a href="mailto:H2217@accor.com">H2217@accor.com</a> Tel. (+33) 01.43.44.84.84 <a href="http://www.mercure.com">www.mercure.com</a>	From €134,00 EUR per night	Métro line 1, station : <i>Gare de Lyon</i> Transport time : 15 min
<b>Hôtel NOVOTEL</b> 2 rue Hector Malot 75012 PARIS	Contact: <a href="mailto:h1735@accor.com">h1735@accor.com</a> Tel (+33) 01 44 67 60 00 <a href="http://www.novotel.com">www.novotel.com</a>	From €180,00 EUR per night	Métro line 1, station : <i>Gare de Lyon</i> Transport time : 15 min
<b>Hôtel Le Ruisseau</b> 137 avenue Galliéni 94160 Saint-Mandé	Contact: <a href="mailto:reservation@leruisseau.fr">reservation@leruisseau.fr</a> Tél. (+33) 01 43 74 02 39	From €130,00 EUR per night	5 minutes' walk to the meeting location.
<b>Hôtel du Château</b> 1, rue Robert Giraudineau 94300 Vincennes	Contact : <a href="mailto:contact@hotel-du-chateau.com">contact@hotel-du-chateau.com</a> Tel: (+33 )01 48 08 67 40 <a href="http://www.hotel-du-chateau.com/en/">www.hotel-du-chateau.com/en/</a>	From €94,00 EUR per night	Métro line 1, station : <i>Château de Vincennes or Berault</i> Transport time : 5 min

### **Social event**

A non-host dinner is planned on Wednesday 1 June. Further information will be provided in the draft programme when available. To facilitate the restaurant reservation, you are kindly invited to fill the registration form if you intend to participate in this dinner. In order to help you for making your hotel reservation, please note that it is likely that the restaurant will be located in the vicinity of Gare de Lyon, Paris and not in Saint-Mandé.

### **Registration**

You are kindly invited to fill the registration form available on the IHO HSSC webpage and to send it to [adcs@iho.int](mailto:adcs@iho.int) , copy [sonia.laouamen@shom.fr](mailto:sonia.laouamen@shom.fr), **no later than 29 April 2016**.