

SHOM Archives

Some figures :

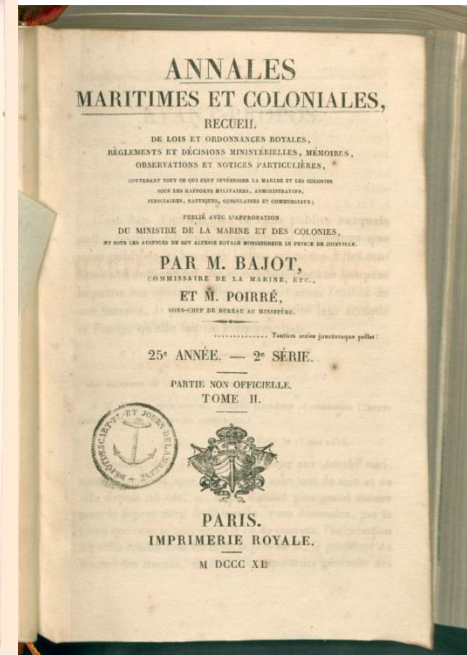
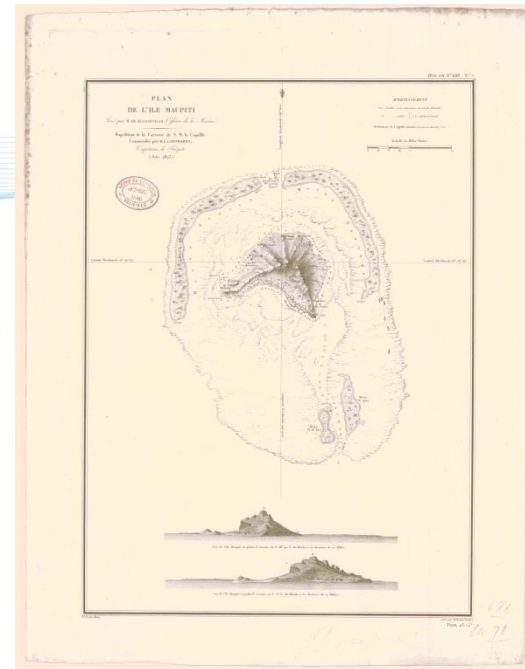
- **5 parts** for an area of **750 m²** ;
- **500 m** of linear storage with several levels ;
- **More than 100 storage furnitures** containing **600 sheets** each ;
- **Thousands of books**



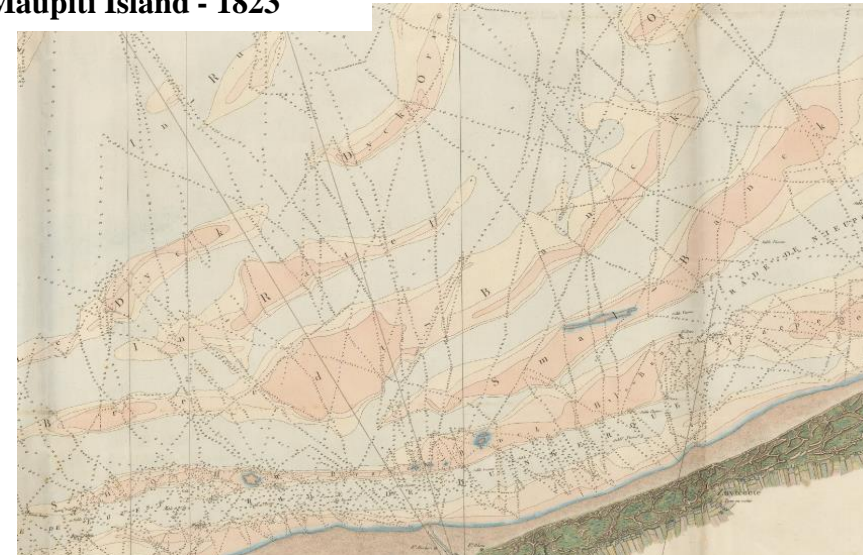
SHOM Archives

About **200 000** paper documents including :

- 75 000 sheets (bathymetry and coastal topography);
- 10 000 old charts;
- 45 000 tide gauge charts;
- 10 000 photos;
- 10 000 books ;
- 50 000 pages of tide observation registers



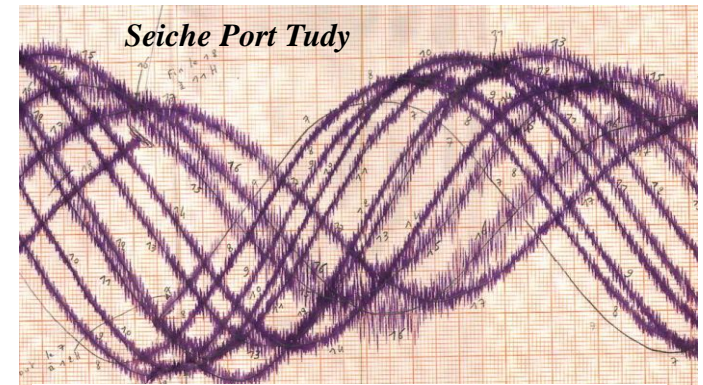
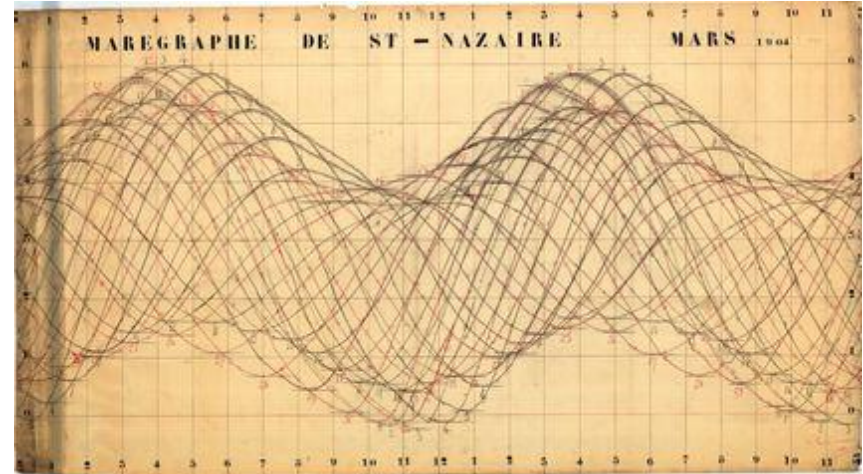
Maupiti Island - 1823



Extrait carte de 1805 du Pas de Calais, montrant la morphologie des bancs de sables

SHOM archives : sea-level and coastline evolution

SHOM tidal archives include observations of the sea-level since 1850.



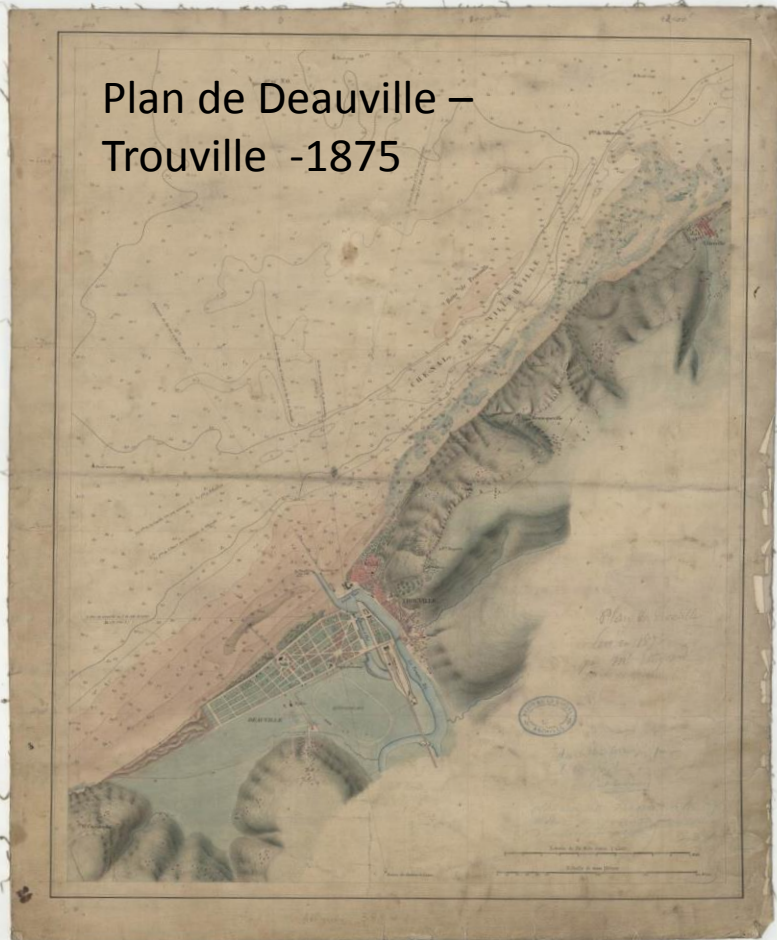
Particularités des observatoires de marée
(dispositif, facteurs d'amplification, ..)



The SHOM ARCHIPEL proposal got budget for the 1st calls for tenders for the Projects of Investments for the Future (half-funding).

The objective is to digitize about 10 000 documents (survey sheets and old charts), make them available on-line (Open-data license) for their promotion (potential usages).

Plan de Deauville –
Trouville -1875



Embouchure de la Seine -
1834

