

Tentative Report

IHO MSDIWG4
Copenhagen, Denmark
31 Jan – 1 Feb, 2013

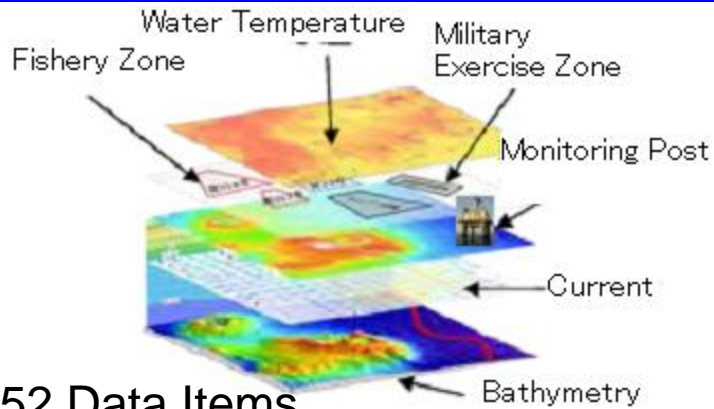
Policy/ Decision Making Support Tool - Trial

Visualized Marine Information Display Service in Japan

Shinichi Kikuchi
JHA

Policy/ Decision Making Support Tool

Marine Information Layers



Leisure



Environmental Preservation



Ocean Development

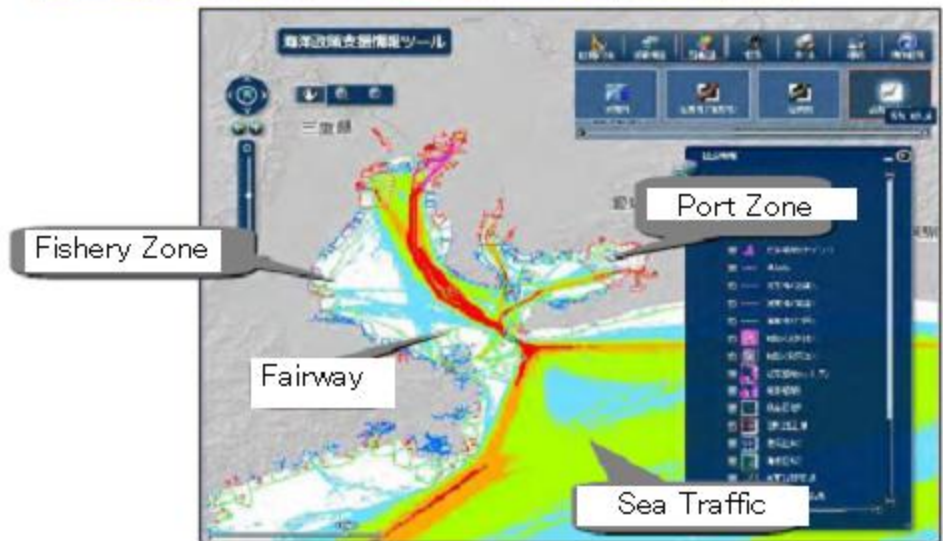
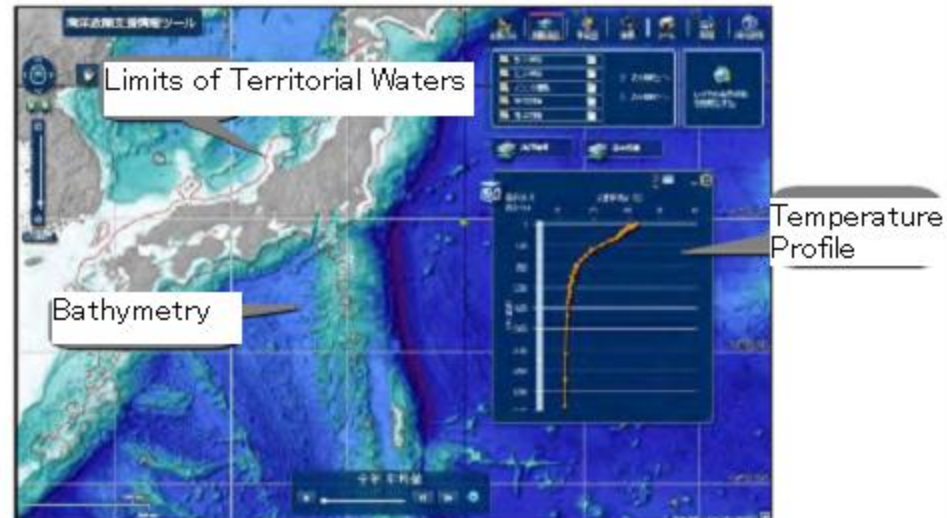


- One:** Access JCG site
- Two:** Select data items
- Three:** Display on a map

<http://www5.kaiho.mlit.go.jp/kaiyo/>

Launched on 18 May 2012

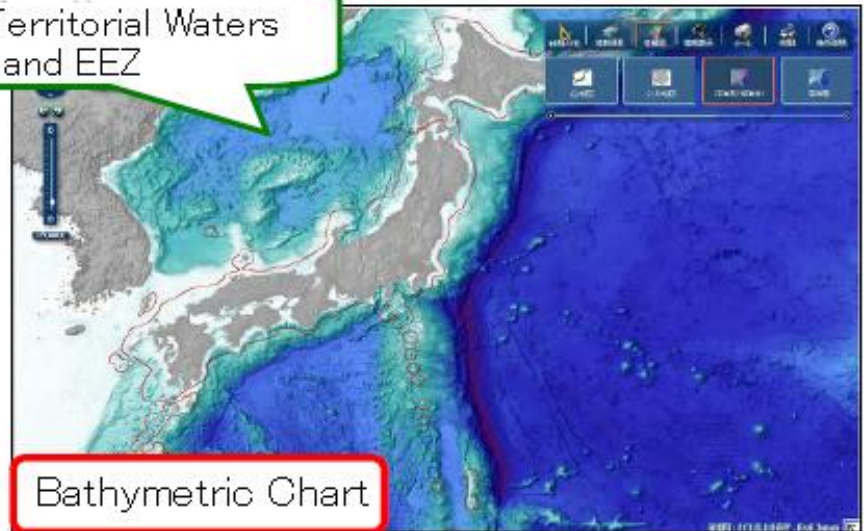
Examples of Display



Optional Background Map



Coastlines



Bathymetric Chart



Sea Traffic



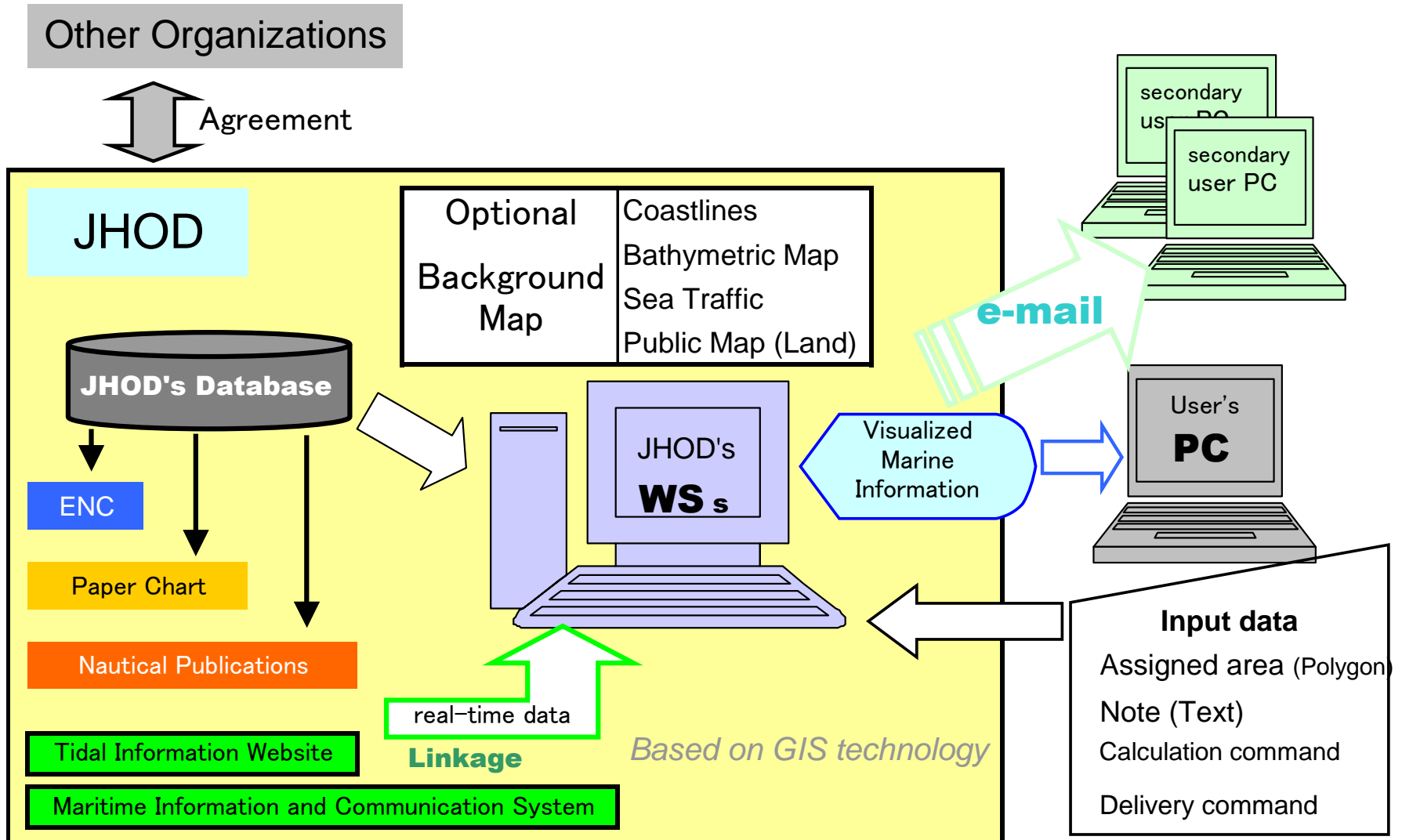
Public Map (land)

Visualized Marine Information

Group	Items
Infrastructure Info	Aids to Navigation, Submarine cables, Offshore structure, Coast Guard Office, etc.
Environmental Info	Marsh, Intertidal area, Sea animal habitat, Swimming place, Wreck, Obstruction, etc.
Social Info	Fairway, Fishery zone, Port zone, Prohibited area, historic site, Military exercise area, etc.
Oceanographic Info	Soundings, Marine weather, current, Water temperature, Salinity, etc.

*Total Items: 52 Items

Delivery of Visualized Marine Information

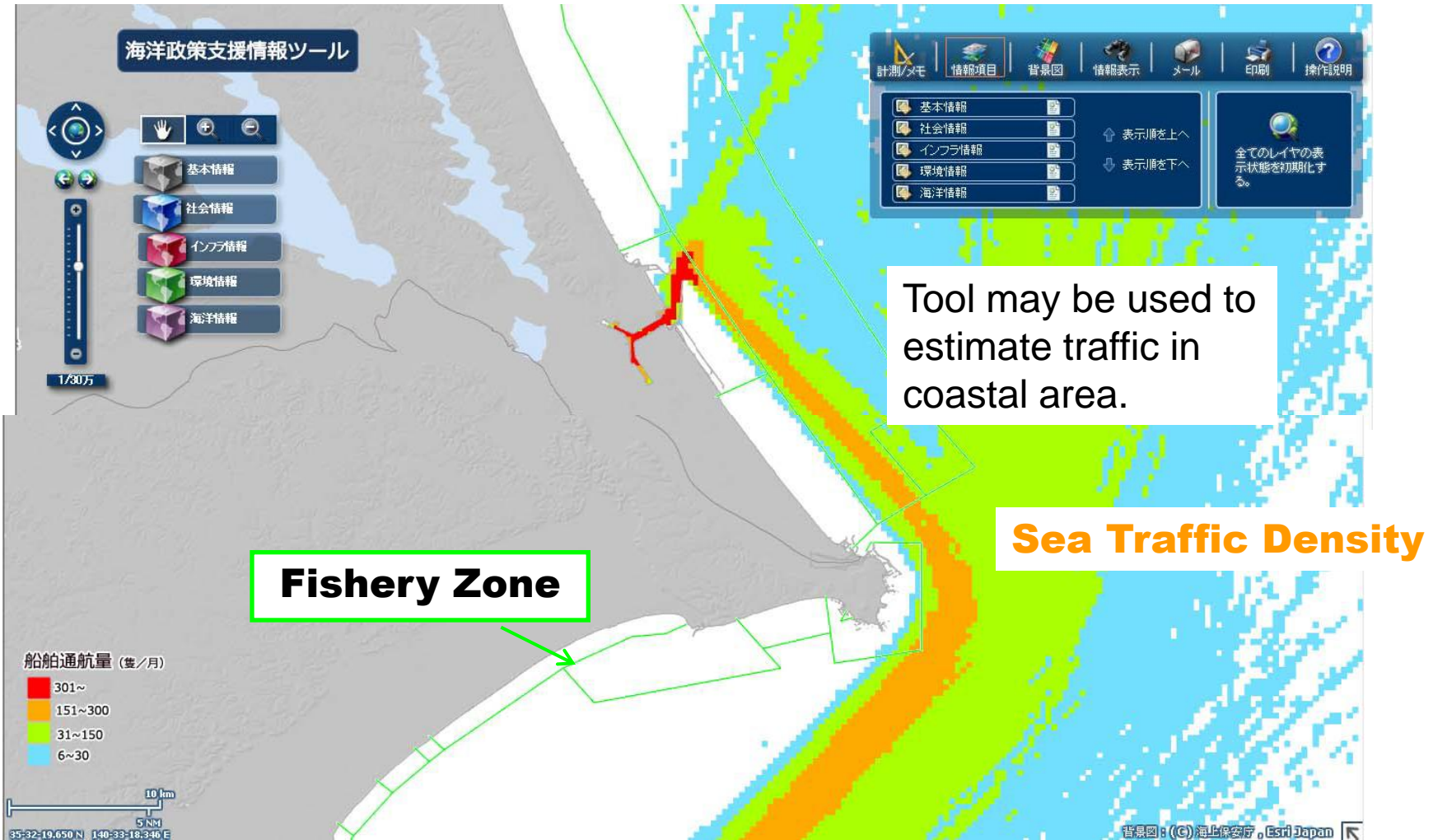


<http://www5.kaiho.mlit.go.jp/kaiyo/>

*Menu and articles are written in Japanese

Launched on 18 May, 2012

Investigating Safety of Coastal Navigation



Overlapping Sea Traffic and Fishery Zone

Assisting Ecological Survey of Turtle

海洋政策支援情報ツール

沿岸域情報提供システム (MIGS) ミックス

気象情報 (最新12時間)

風向 (Wind Direction)

時間	22:55	00:55	02:55	04:55	06:55	08:55	10:55
風向	E	E	E	E	E	E	N

気圧 (Atmospheric Pressure) (hPa)

時間	22:55	00:55	02:55	04:55	06:55	08:55	10:55
気圧	1005	1004	1003	1002	1001	1000	999

271-細島

ID: 271
所在地:
緯度: 32度 06.0分
経度: 131度 40.2分
観測所名称: 細島
読み: ほそしま
潮汐推算値: (推定値)
作成機関: 海上保安庁海洋情報部
出典: 海上保安庁海洋情報部
備考:

2012年05月02日 潮汐曲線 細島, HOSOSHIMA

時	00	01	02	03	04	05	06	07	08	09	10	11
毎時潮高 (cm)	111	134	149	153	145	127	103	80	63	55	59	74
時	12	13	14	15	16	17	18	19	20	21	22	23
毎時潮高 (cm)	96	119										

Real time weather data

Note

Real time tidal data

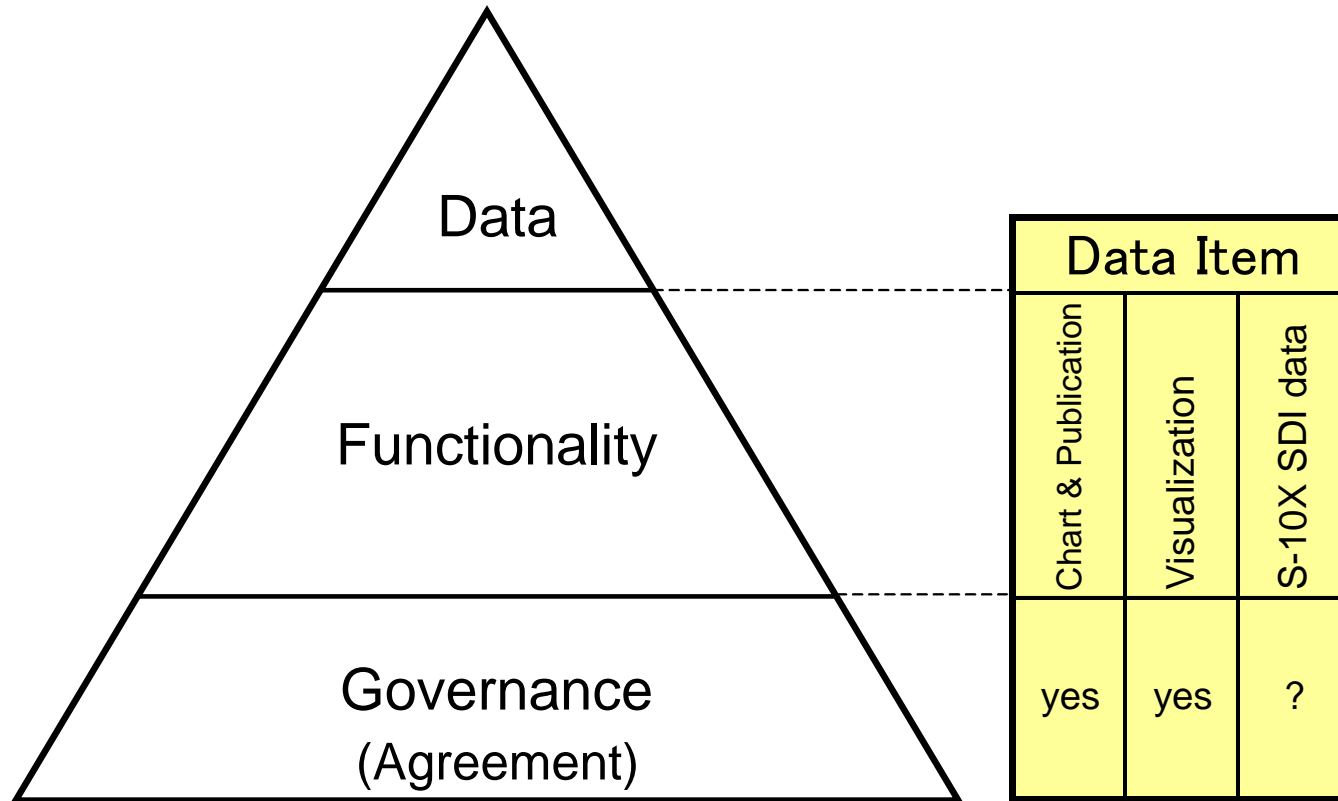
This usage case is a dream of person who developed the tool!

32°24'N 131°43'41.951E

背景図: (C)海上保安庁, 国土地理院, Esri Japan
セキュリティ設定を変更するにはダブルクリックして

Note observation data with tidal data and weather data shown on the screen

Future Extension of the Tool



The above diagram was shown by Ms. Mazzoli at the MSDI Open Forum, 30 Jan 2013.

Although the governance is important to distribute visualized Marine Info, the governance is more important when we distribute S-10X SDI data..

Question?