



Governance in regard to establishing a Danish MSDI

Details of the organisation and responsibilities for the respective parties are described below.

Organisation

A MSDI-forum for collaboration has been established, to ensure an efficient and coordinated development and use of maritime data.

MSDI-forum membership is based on those authorities that are a part of the collaboration for a Danish MSDI. These are: DMI, Danish Energy Agency, Defence Command Denmark, Danish Geodata Agency, Danish Agency for Culture, Danish Coastal Authority, Danish Environmental Protection Agency, Danish AgriFish Agency, Danish Nature Agency, Danish Police and Danish Maritime Authority. The Chairman for the MSDI-forum is at the Deputy Director level and will be undertaken by the Danish Geodata Agency. Other members of the forum are at the Head of Department level.

The MSDI-forum is administrated by a secretariat, established in the Danish Geodata Agency.

Other institutions, e.g. within research, can, based on permission from the MSDI-forum, utilise the MSDI to exhibit relevant MSDI data, but are not a part of the MSDI collaboration, and therefore not represented in the MSDI-forum. However, they will have an affiliation via a relevant authority in the MSDI collaboration.

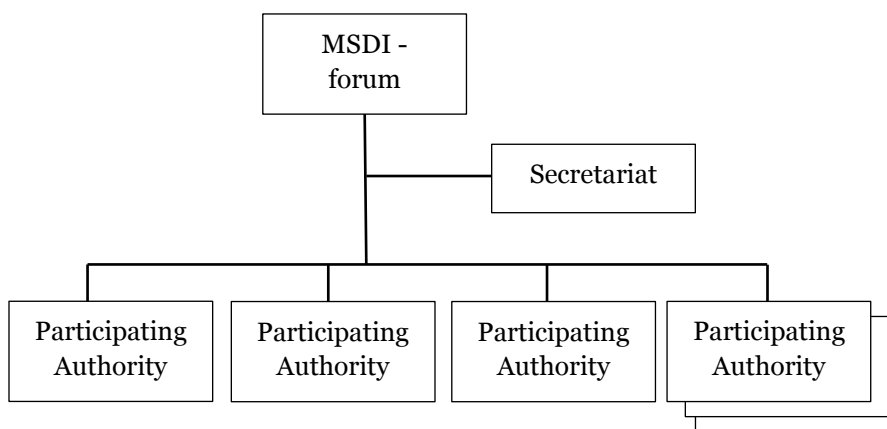


Figure 1. MSDI organisation

The MSDI-forum has amongst other tasks to:

- Approve cooperation agreements
- Approve the upcoming yearly budget
- Put forth new proposals to and initiate new developments for within the MSDI area, including to finance small analytical and developmental activities
- Hold meetings in the MSDI-forum based on demand, but at least once a year

The MSDI-forum gives a yearly orientation to the Maritime Director Forum on the status and planned activities within the MSDI collaboration.

The MSDI-secretariat has amongst other tasks to:

- Ensure that standards, services, etc. fulfil the requirements that are described in the technical solution for the MSDI
- Ensure that updates for data and data quality are described and implemented as agreed upon
- Be primary point of contact for technical support for the users of the MSDI
- Propose new initiatives to further develop the MSDI area
- Responsible for the administrative part of the cooperation, hereby, produce cooperation agreements and conduct and prepare documents and draft decisions for meetings in the MSDI-forum
- Offer assistance and training of colleagues to the participating authorities

Obligations for participating authorities

The participating authorities that contribute their data commit to:

- Provide information on metadata and services as agreed upon within the technical description of the MSDI
- Identify a "single point of contact", which the MSDI secretariat can refer to in case of technical problems for an authority
- Participate in the MSDI-forum

Financing

Authorities that want services within the MSDI, pay an annual fee in accordance to the financial model in Annex 2. This applies regardless if a participant provides data or not. Other institutions, such as universities, which, based on agreement with the MSDI-forum, contributes with relevant data to the MSDI, but do not use services from the MSDI, can do this outside of the financial agreement.

Agreements

A proposal is put forth that bilateral agreements are composed with GST as an operator and the individual authorities. With bilateral agreements, the agreement structure becomes more flexible in relation to changes within participating authorities and also in relation to technical content, in case there may be future wishes for changes, e.g. functionality.

Requests to secede from the MSDI-cooperation shall happen with a one year notification applicable from 1 April the following year.

Connection to INSPIRE

For a portion of the data that is a part of the MSDI, it is applicable that they are subject to the INSPIRE Directive. For INSPIRE data, it is amongst the requirements to establish metadata, data should be available in standardised form and there should be established services, so data can be shown and downloaded. This means that they should be ready to be included in the MSDI solution.

Priced data

For some dataset, which will be included in the MSDI, applies that they are priced, such as nautical chart data. It is the individual dataowners that set the guidelines for use of their data including access criteria, payment models and international exchange.