

2nd NCWG MEETING
IHB, Monaco 26-29 April 2016
Paper for Consideration by NCWG
Restrictions in ESSA-areas

Submitted by:	Netherlands Hydrographic Office / Ben Timmerman
Executive Summary:	Restrictions in Marine/Nature Reserves
Related Documents:	CSPCWG9-08.5A; INT1; S4
Related Projects:	Discussions in previous CSPCWG-meetings

Introduction / Background

The Dutch sea area contains a growing number of areas with certain restrictions. Among them there are Nature/Marine reserves which are symbolized in green on multi-coloured charts. These ESSA-areas also have various restrictions and there are situations where they overlap with other kind of areas.

Analysis / Discussion

In multi-colour charts ESSA-areas may be charted in green and that's a big advantage: The difference between these areas and other areas (charted in magenta or black) can be seen immediately.

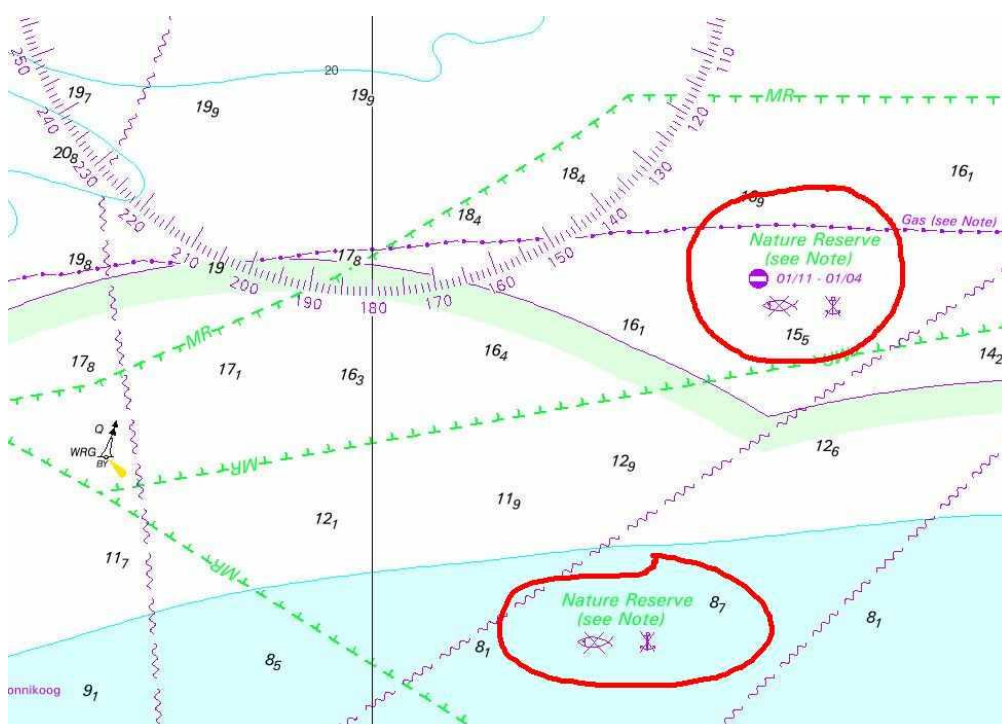
However, there is a risk of confusion for the restrictions that are valid for these kind of area.

B-142.2 states that *"Miscellaneous areas where anchoring and/or fishing are prohibited (shellfish beds, ground chains of moorings, 'protected' historic wrecks, etc). Some of these may alternatively be in green, see B-145"*

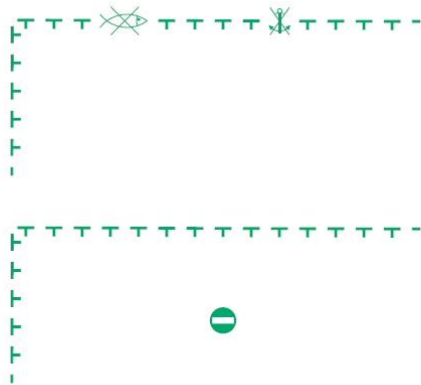
B-145 says that *"Green may also be used, instead of magenta, for environmental information and limits; see B-437.2b"*

B-437.2b mentions that *"If green is used for the ESSA limits, all associated symbols, texts and notes should also be green."* However, there is not a clear example that a combination of an ESSA-area and one or more restrictions is used.

There are a lot of (green) MR-areas with a combination of restrictions in the coastal zone of the Netherlands and so far these restrictions are symbolized in magenta with a legend as a header to make sure that the user knows where the restriction belongs to. See example below:



It would be more clear if the restrictions could be symbolized in green, either within the area, or on the border of the area, like these examples below:



I'm sure this item has been discussed thoroughly during the renewal of S4 in the past (2006), but the outcome was not clear enough for me in the S4-documentation.

Conclusions

There should be more clarity in the symbolization/colours of restrictions in ESSA-areas on multi-coloured charts. When green can be used for symbols in these areas this would be more clear to the user.

Recommendations

1. Allow the use of green colours for restriction symbols in combination with green ESSA areas
2. More clarity in illustrations in S4 and INT1 on the use of these symbols

Justification and Impacts

Better guidelines for the use of restriction symbols in combination with green ESSA areas

Action required of NCWG

The NCWG is invited to:

- a. consider this paper
- b. agree on the outcome
- c. adjust documentation in S4 and INT1 where necessary