

3rd NCWG MEETING
ESRI HQ, Redlands, California, USA 16-19 May 2017

Paper for Consideration by NCWG3
Aids to Navigation Changes in ENC and Paper Chart

Submitted by:	Germany (BSH)
Executive Summary:	More AtoN changes in ENCs than in paper charts
Related Documents:	S-4 B-600
Related Projects:	None

Introduction / Background

Recently a decision was made in the German Hydrographic Office to include more buoyage changes in the ENC than in the paper chart.

The Federal Waterway and Shipping Authorities produce Announcements for Mariners which are the basis for BSH to produce NtMs. In very changeable fairways only the approach buoyage is published via NtM. The additional buoyage changes usually wait to be published with the annual NE of the chart.

To organize the survey and other works in these areas better the Authorities asked BSH about the possibility to publish all the information of the above Announcements as ENC updates.

Analysis / Discussion

B-600 Chart Maintenance says that “the ENC may contain information which needs updating, which is not included in the paper chart.” The following is a good example:

The Announcement for Mariner includes detailed information:

Deutschland.Nordsee.Ostfriesische Inseln.Accumer Ee, Änderung der Schifffahrtszeichen

aktuell gültig:	ja
Karte(n):	(21) 89
Geografische Angabe in:	WGS 84
Frühere BfS:	49/16, 153/16, 184/16, 8/17, 20/17
Zeit der Ausführung:	sofort
Gültig von:	13.03.17
Gültig bis (einschl.):	auf Widerruf
Angaben:	

Folgende Tonnen wurden verlegt:

Anst. **Accumer Ee** nach Pos.: 53°47,094' N, 007°26,621' E
 grüne Spitztonne **A1** nach Pos.: 53°46,068' N, 007°26,190' E
 rote Spierentonne **A2** nach Pos.: 53°46,254' N, 007°26,472' E
 rote Leuchttonne **A4** nach Pos.: 53°45,828' N, 007°26,292' E
 rote Spierentonne **A6** nach Pos.: 53°45,432' N, 007°26,124' E
 rote Spierentonne **A8** nach Pos.: 53°45,072' N, 007°25,974' E
 grüne Spitztonne **A3** vorübergehend eingezogen

Aushang bis: 13.04.2017

Usually only the change of the approach buoy is published via NtM:

★ (21) 89 **Accumer Ee. N-lich Dovetief**

3015

Letzte NfS: 05/17

Verlege

Relocate



Iso.8s

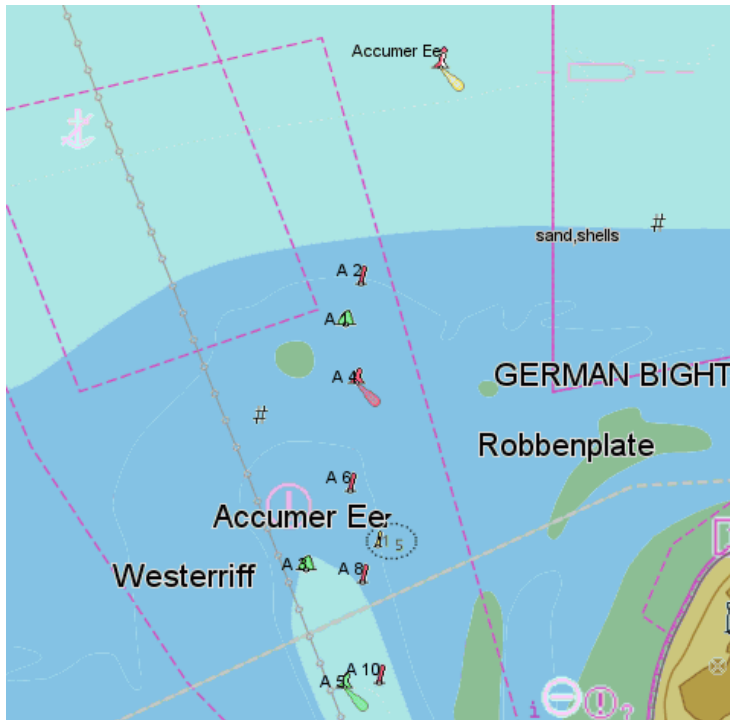
Accumer Ee

nach

to 53° 47,09' N 007° 26,62' E

The additional buoyage changes are only included in the next NE of paper and electronic chart.

Chart before NtM:



In future all the buoys change according to the above Announcement, e.g. buoy A3 will be deleted.

Conclusions

By including the above information the quality and use of ENC can be improved.

The paper chart still has the warning note about changeable areas:

FAHRWASSER

Die Seegaten und Wattfahrwasser Schlucher bis Harle sind dauernden Änderungen unterworfen. Deshalb werden in dieser Karte vom Datum der „Neuen Ausgabe“ an, die Tiefenangaben und die Schifffahrtszeichen mit Ausnahme der Ansteuerungstonnen nicht laufend berichtigt.

CHANNELS

The channels Schlucher to Harle are subject to frequent change. Therefore, from the date of the “New Edition” of this chart, the depths and aids to navigation – with the exception of the approach buoys – will not be currently corrected.

The only workflow change in the office refers to the immediate project forwarding from the base data management to the ENC production.

Recommendations

The demonstrated way could also be a worth solution for other HOs. Remarks are welcomed.

In the future BSH plans to reduce the depth depiction in INT charts below 5 metres as there is no deep going international shipping. The ENC will still keep all the data. For the navigation through these shallow waters national paper charts are available.

Justification and Impacts

It happens that the soundings in the area of buoyage change do not correspond any more to

the buoyage, e.g. it seems to be too shallow to navigate through. This could happen in the time when the survey data which led to the buoyage change did not reach BSH.

But this compromise is well considered by the Authorities as they need the correct buoyage coordinates for their work.

Action required of NCWG

The NCWG is invited to note and discuss this solution.

If an example for inclusion in B-600 is wished BSH could provide it.