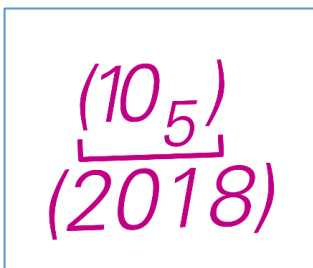


Paper for Consideration by NCWG
Depicting out of position soundings in swept areas

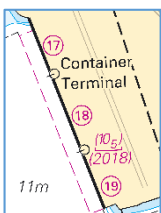
Submitted by:	Swedish Maritime Administration, Hydrographic office
Executive Summary:	Assess a need for inserting a new symbol for out of position soundings in swept areas.
Related Documents:	S-4 Chapter B-412.2, B-415.1
Related Projects:	

Introduction / Background

Ports and commercial shipping demand more detailed depictions of depth information in port areas or in those areas where the under keel clearance is minimal. Sweden often uses bar sweeping as its chosen survey method to provide least depth measurements in those areas. Depending upon product, ENC or chart, the possibilities to cartographically depict the information differ depending on the chart scale or the ENC compilation scale. In chart production, one challenge is to show enough information about the depth inside a swept area where there is no room for the swept symbol. To ensure that the mariner has the information in a swept area where there is no room for the swept symbol, Sweden suggests the use of a combination of symbols: the “out of position sounding” and the “magenta sounding with the swept symbol”.



The symbol inserted in chart:



Analysis / Discussion

In the existing guidance S4 B-412.2 there are symbols for out of positioning soundings. Sweden's view is that showing the swept depth as out of position follows these principals and will benefit depiction in charts, without producing charts in larger scales. Introducing this new symbol would have no impact on ENC production.

Recommendations

For NCWG to consider the proposal of a new symbol.

Impacts

The proposed modification affects the description for B-412.2 and B-415.1 in S4 and INT1. Some cartographic software with symbol libraries based on INT1 would maybe need updating.

Action required of NCWG

The NCWG is invited to:

Endorse this proposal to improve S-4 guidance for depicting out of position soundings in swept areas.