



**IHO**

International  
Hydrographic  
Organization

# 2<sup>nd</sup> Workshop for Charting Regions Coordinators

Region NIOHC (Area-J) – Charting Coordinator  
**INDIA**

**Agenda Item 4**

NCWG-5, Workshop for Charting Regions,  
Stockholm, Sweden, 4 November 2019





**IHO**

International  
Hydrographic  
Organization

**TOTAL NO. OF INT CHARTS IN AREA J = 174**

**PRODUCER HOs: BD, EG, FR, IN & GB**

NCWG-5, Workshop for Charting Regions,  
Stockholm, Sweden, 4 November 2019



IHO

International  
Hydrographic  
Organization

## Allocation of Production Responsibilities

Producer Nation	INT Charts Allocated	INT Charts Produced	%	Charts Pending
Bangladesh	09	09	100	00
Egypt	03	03	100	00
France	05	05	100	00
India	80	80	100	00
UK	77	72	93	05

NCWG-5, Workshop for Charting Regions,  
Stockholm, Sweden, 4 November 2019



IHO

International  
Hydrographic  
Organization

# Allocation of Production Responsibilities - BANGLADESH

The screenshot displays the IHO Chart Search interface. On the left, a dark blue sidebar contains search filters and a list of results. The main area shows a map of Bangladesh with several chart boundaries overlaid in blue and orange. The number 7419 is visible on the map, and 7425 is highlighted in the search results list.

**CHART SEARCH** Search SeaWay

INT No  Search

SEARCH Option Reset

INT Region  CHART Scale

Prod. Nation

Pub Year

Status

**CHART List** 9 Item

- ▶7425:Malancha River to S...
- ▶7426:Approaches to Hiran...
- ▶7427:Chittagong Harbour
- ▶7428:App. To Chittagong
- ▶7428:Plan A - App. To Ch...
- ▶7429:Elephant Point to M...
- ▶7451:Plan-A :Pussur Rive...
- ▶7451:Plan-B : Pussur Riv...
- ▶7452:Plan-A : Pussur Riv...
- ▶7452:Plan-B : Pussur Riv...
- ▶7453:Payra Harbour
- ▶7454:Approaches to Payra...

Stockholm, Sweden, 4 November 2019





IHO

# Allocation of Production Responsibilities - EGYPT

International  
Hydrographic  
Organization

The screenshot displays the IHO Chart Search interface. On the left, a search panel includes the following fields:

- CHART SEARCH** (with Search and SeaWay buttons)
- INT No** (dropdown menu)
- SEARCH Option** (with a Reset button)
- INT Region** (text input)
- CHART Scale** (text input)
- Prod Nation** (text input, currently set to EG)
- Pub Year** (text input)
- Status** (dropdown menu, currently set to All)

Below the search panel is a **CHART List** section showing 3 items:

- ▶ 7144: Port of Suez
- ▶ 7156: Suez Canal (Port Sa...)
- ▶ 7156: Plan-A: Port Said (...)
- ▶ 7156: Plan -B: Al Kaab t...
- ▶ 7156: Plan-C: New Expansi...
- ▶ 7156: Plan-D: Al Temsah L...
- ▶ 7159: Suez Canal (Great B...
- ▶ 7159: Plan-E: Great Bitte...
- ▶ 7159: Plan-F: Kabret to S...
- ▶ 7159: Plan-G: Port Taufiq...

The right side of the image shows a map of the Suez Canal region with several chart boundaries overlaid. The chart numbers 3550, 3500, and 7136 are visible on the map.

NCWG-5, Workshop for Charting Regions,  
Stockholm, Sweden, 4 November 2019



IHO

International  
Hydrographic  
Organization

# Allocation of Production Responsibilities - FRANCE

**CHART SEARCH** Search SeaWay

INT No  Search

**SEARCH Option** Reset

INT Region  CHART Scale

Prod.Nation FR

Pub Year

Status All

**CHART List** 5 Item

- ▶ 7004:Partie Ouest du Gol...
- ▶ 7004:Plan A - Berbera
- ▶ 7114:Bab El Mandeb et Go...
- ▶ 7114:Plan A - Mouillage ...
- ▶ 7114:Plan B - Entrée du ...
- ▶ 7114:Plan C - Port d'O...
- ▶ 7115:Abords de Djibouti
- ▶ 7118:De Al Hudaydab à Al...
- ▶ 7120:Port de Djibouti

Map labels: 7154, 7122, 707118, 7114, 7162, 7112, 7110

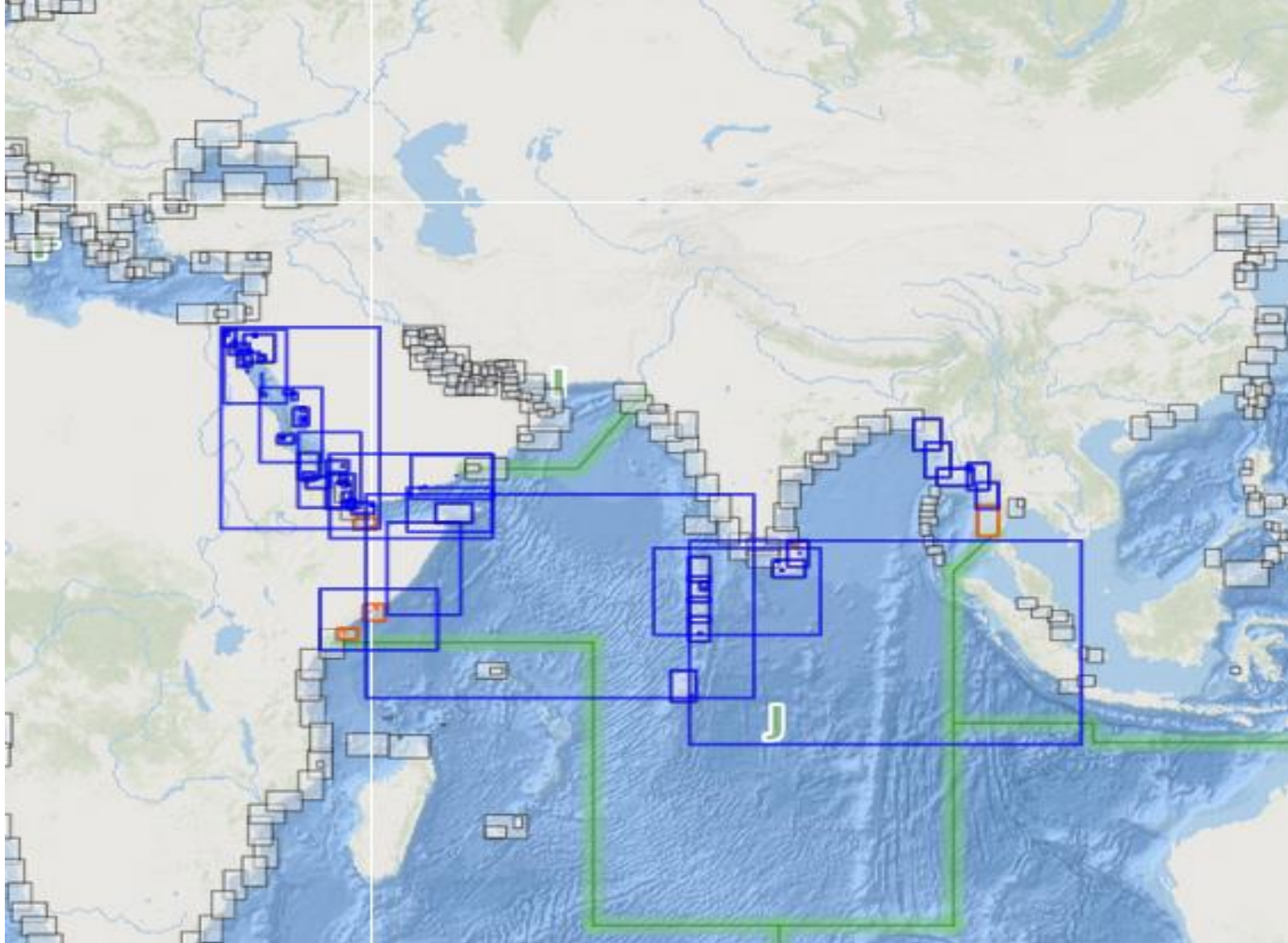
NCWG-5, Workshop for Charting Regions,  
Stockholm, Sweden, 4 November 2019



IHO

International  
Hydrographic  
Organization

# Allocation of Production Responsibilities - UKHO



NCWG-5, Workshop for Charting Regions,  
Stockholm, Sweden, 4 November 2019

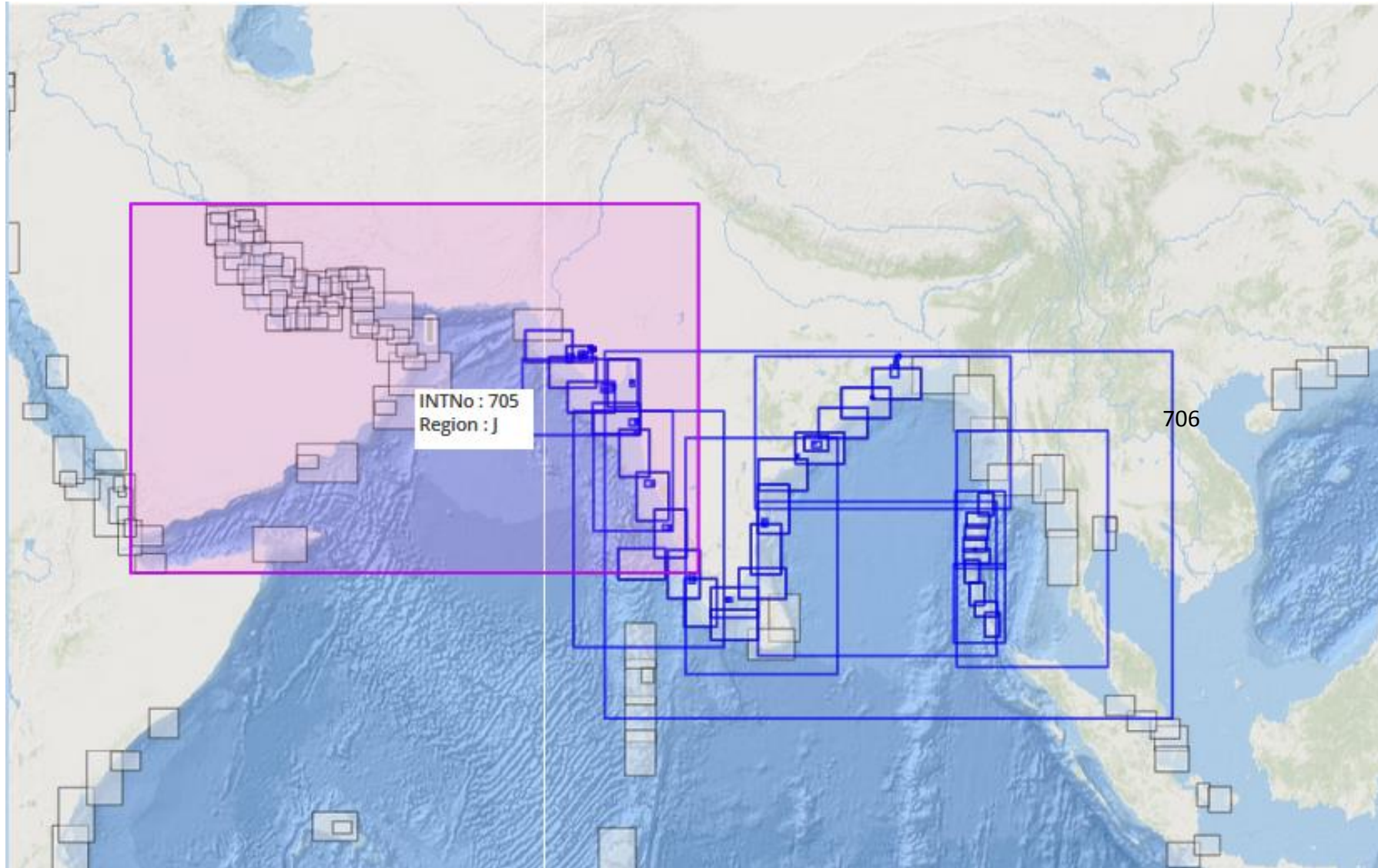




IHO

# Allocation of Production Responsibilities - INDIA

International  
Hydrographic  
Organization



NCWG-5, Workshop for Charting Regions,  
Stockholm, Sweden, 4 November 2019





IHO

# INT CHART SCHEMING AND MAINTENANCE

International  
Hydrographic  
Organization

- 174 INT Charts are schemed in the NIOHC Region.
- Member States are encouraged to produce/update their allocated INT charts with data currency.
- INT Chart schemes are under continuous review for providing better coverage in the NIOHC region.
- New INT schemes from the MS in the Region have been scrutinized / reviewed in compliance with S4 and S11 Part'A' guidelines.



IHO

# INT CHART MONITORING

Monitoring of INT charts in the region has been carried out in compliance with S11 Part A para 3.14 as below:

## 3.14 Monitoring of INT Charts.

3.14.1 The following procedure is to be implemented by the Regional INT Chart Coordinators (or the ICCWG):

a. **New INT Chart Producer Nations are to provide the first edition of any INT chart to the relevant Regional INT Chart Coordinator (or ICCWG) for review as soon as convenient during the production cycle;**

b. **INT Chart Coordinators/ICCWGs are to:**

Manage the review of any first edition INT chart produced by a new INT Chart Producer Nation to verify its compliance with the IHO standards; and

Provide feedback to the Producer Nation and report results to the next RHC meeting.

- This review can be supported using the *basic quality assurance check-list for review of INT charts*
- available in Annex II;





IHO

## EXISTANCE OF ICCWG

International  
Hydrographic  
Organization

- ICCWG meetings are conducted every year i.e., one day before the NIOHC meeting.
- INT chart issues are discussed during the NICCWG meeting.
- INT Chart scheme of the region is reviewed every year during the NIOHC meeting.
- Issues related overlap between ENC cells of same usage band produced by the adjoining countries have been addressed through correspondence and also discussed during the NICCWG meeting every year.

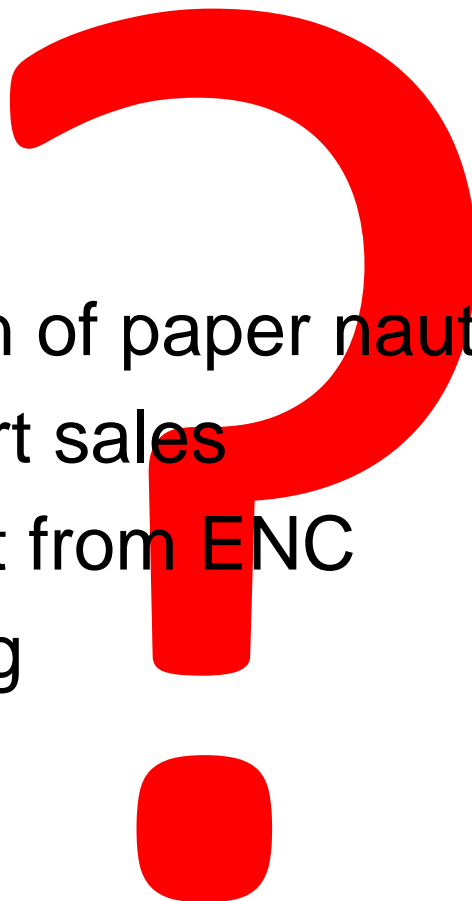


IHO

# FUTURE OF INT CHARTS?

International  
Hydrographic  
Organization

- Minimizing the production of paper nautical chart
- Drop down in Paper Chart sales
- Production of paper chart from ENC
- ENC cell based scheming



NCWG-5, Workshop for Charting Regions,  
Stockholm, Sweden, 4 November 2019