

UNITED STATES BOARD ON GEOGRAPHIC NAMES

UNDERSEA FEATURE NAME PROPOSAL

NAME PROPOSED: Emery Canyon

LOCATION: Continental margin east coast North America

Ocean or Sea: North Atlantic Ocean

Coordinates:

point feature or center point: .....Lat. \_\_\_\_\_ Long. \_\_\_\_\_  
linear feature (from) :.....Lat. 39-40N \_\_\_\_\_ Long. 71-54W \_\_\_\_\_ *500 m Contour*  
linear feature (to-midpoint or turning point):.....Lat. 39-34N \_\_\_\_\_ Long. 71-48W \_\_\_\_\_ *1000 m*  
linear feature (to):.....Lat. 39-25N \_\_\_\_\_ Long. 71-31W \_\_\_\_\_  
areal feature - Northeast corner: .....Lat. \_\_\_\_\_ Long. \_\_\_\_\_  
- Southeast corner :.....Lat. \_\_\_\_\_ Long. \_\_\_\_\_  
- Southwest corner:.....Lat. \_\_\_\_\_ Long. \_\_\_\_\_  
- Northwest corner:.....Lat. \_\_\_\_\_ Long. \_\_\_\_\_

DESCRIPTION:

Feature type: Submarine Canyon \_\_\_\_\_ Size and shape: \_\_\_\_\_  
Depth (max. and min.): 400 - 2250\_m \_\_\_\_\_ Steepness, etc.: \_\_\_\_\_  
Associated features: \_\_\_\_\_

CHART OR MAP REFERENCE:

Name and feature shown on: \_\_\_\_\_  
Feature shown but not named on: \_\_\_\_\_

REASON FOR CHOICE OF NAME:

K.O. Emery, 1914-1998, Geophysicist, marine geologist;  
Univ of So California 1945-1962; Woods Hole Oceanographic Institution, 1962-1979.; Nat'l Acad.  
Sciences; Studied submarine canyons among many worldwide issues; led major geological  
exploration and mapping of the U.S. east-coast continental margin sediments and structure, 1960s.

DISCOVERY FACTS:

Date: Aug-Sep 2002 Discoverer (individual, ship): Canyon defined by precision multibeam  
echosounding survey aboard NOAA ship Ronald H. Brown, August 2002.  
Sounding equipment used: multibeam bathymetric system Navigation type: GPS  
Estimated horizontal accuracy: ± \_\_\_\_\_ n.m./km Track spacing, crossings: \_\_\_\_\_

SUPPORTING MATERIALS:

Please enclose references, reprints profiles, maps, etc.  
Shaded relief image of Ron Brown bathymetry, with contours at 100 m interval.

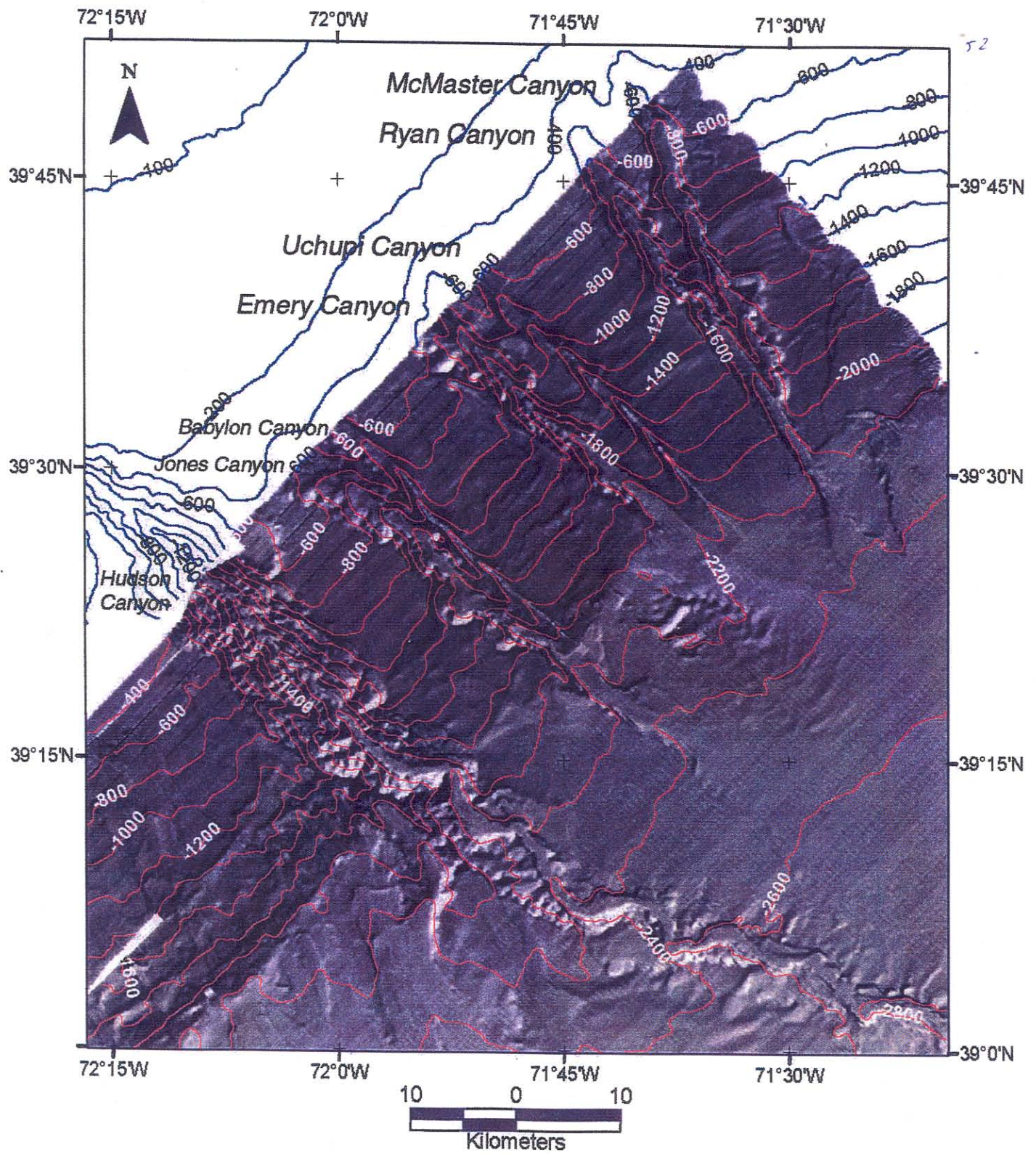
SUBMITTED BY: James Robb

Organization and address:  
U.S. Geological Survey  
Coastal and Marine Geology Program  
384 Woods Hole Road  
Woods Hole, MA 02543

Please mail to:

Executive Secretary  
US Board on Geographic Names  
National Geospatial-Intelligence Agency  
4600 Sangamore Road Mail Stop D-167  
Bethesda MD 20816-5003  
USA





UNITED STATES BOARD ON GEOGRAPHIC NAMES

UNDERSEA FEATURE NAME PROPOSAL

**NAME PROPOSED:** McMaster Canyon

**LOCATION:** Continental margin east coast North America

**Ocean or Sea:** North Atlantic Ocean

**Coordinates:**

point feature or center point: .....Lat. \_\_\_\_\_ Long. \_\_\_\_\_  
linear feature (from) :.....Lat. 39-51N Long. 71-41W  
linear feature (to-midpoint or turning point):.....Lat. 39-44N Long. 71-37W  
linear feature (to):.....Lat. 39-35N Long. 71-31W  
areal feature - Northeast corner: .....Lat. \_\_\_\_\_ Long. \_\_\_\_\_  
- Southeast corner :.....Lat. \_\_\_\_\_ Long. \_\_\_\_\_  
- Southwest corner:.....Lat. \_\_\_\_\_ Long. \_\_\_\_\_  
- Northwest corner:.....Lat. \_\_\_\_\_ Long. \_\_\_\_\_

**DESCRIPTION:**

**Feature type:** Submarine Canyon **Size and shape:** \_\_\_\_\_  
**Depth (max. and min.):** 400 - 2100 m **Steepness, etc.:** \_\_\_\_\_  
**Associated features:** intersects with Ryan Canyon (newly named)

**CHART OR MAP REFERENCE:**

**Name and feature shown on:** \_\_\_\_\_  
**Feature shown but not named on:** \_\_\_\_\_

**REASON FOR CHOICE OF NAME:** <sup>M</sup> Robert L. McMaster, 1920-1993, marine geologist;  
Professor; Univ Rhode Island 1953-1990; studied continental margins, sediments and structure,  
submarine canyons; guided many graduate students who have pursued these interests world  
wide.

**DISCOVERY FACTS:**

**Date:** Aug-Sep 2002 **Discoverer (individual, ship):** Canyon defined by precision multibeam  
echosounding survey aboard NOAA ship Ronald H. Brown, August 2002.  
**Sounding equipment used:** multibeam bathymetric system **Navigation type:** GPS  
**Estimated horizontal accuracy:** ± \_\_\_\_\_ n.m./km **Track spacing, crossings:** \_\_\_\_\_

**SUPPORTING MATERIALS:** Please enclose references, reprints profiles, maps, etc.  
-Shaded relief image of Ron Brown bathymetry, with contours at 100 m interval.

**SUBMITTED BY:** James Robb  
**Organization and address:** \_\_\_\_\_  
U.S. Geological Survey  
Coastal and Marine Geology Program  
384 Woods Hole Road  
Woods Hole, MA 02543

Please mail to:  
Executive Secretary  
US Board on Geographic Names  
National Geospatial-Intelligence Agency  
4600 Sangamore Road Mail Stop D-167  
Bethesda MD 20816-5003  
USA



UNITED STATES BOARD ON GEOGRAPHIC NAMES

UNDERSEA FEATURE NAME PROPOSAL

NAME PROPOSED: Ryan Canyon

LOCATION: Continental margin east coast North America

Ocean or Sea: North Atlantic Ocean

Coordinates:

point feature or center point: .....Lat. \_\_\_\_\_ Long. \_\_\_\_\_  
linear feature (from) :.....Lat. 39-48N \_\_\_\_\_ Long. 71-45W \_\_\_\_\_  
linear feature (to-midpoint or turning point):.....Lat. 39-42N \_\_\_\_\_ Long. 71-39W \_\_\_\_\_  
linear feature (to):.....Lat. 39-30N \_\_\_\_\_ Long. 71-27W \_\_\_\_\_  
areal feature - Northeast corner: .....Lat. \_\_\_\_\_ Long. \_\_\_\_\_  
- Southeast corner :.....Lat. \_\_\_\_\_ Long. \_\_\_\_\_  
- Southwest corner:.....Lat. \_\_\_\_\_ Long. \_\_\_\_\_  
- Northwest corner:.....Lat. \_\_\_\_\_ Long. \_\_\_\_\_

DESCRIPTION:

Feature type: Submarine Canyon \_\_\_\_\_ Size and shape: \_\_\_\_\_  
Depth (max. and min.): 400 - 2250 m \_\_\_\_\_ Steepness, etc.: \_\_\_\_\_  
Associated features: \_\_\_\_\_

CHART OR MAP REFERENCE:

Name and feature shown on: \_\_\_\_\_  
Feature shown but not named on: \_\_\_\_\_

REASON FOR CHOICE OF NAME: William B. F. Ryan (1939- ), marine geologist; senior research scientist in geology at the Lamont-Doherty Earth Observatory, and adjunct professor of earth and environmental sciences at Columbia University; authority mid-ocean ridges, on continental margins, submarine-canyon processes, studied east-coast submarine canyons. Mediterranean sea ~~desiccation~~ and reflooding, pre-historic flooding of Black Sea. *dessication*

DISCOVERY FACTS:

Date: Aug-Sep 2002 Discoverer (individual, ship): Canyon defined by precision multibeam echosounding survey aboard NOAA ship Ronald H. Brown, August 2002.  
Sounding equipment used: Seabeam \_\_\_\_\_ Navigation type: GPS  
Estimated horizontal accuracy: ± \_\_\_\_\_ n.m./km Track spacing, crossings: \_\_\_\_\_

SUPPORTING MATERIALS: Please enclose references, reprints profiles, maps, etc.

-Shaded relief image of Ron Brown bathymetry, with contours at 100 m interval.

SUBMITTED BY: James Robb \_\_\_\_\_

Organization and address: \_\_\_\_\_  
U.S. Geological Survey  
Coastal and Marine Geology Program \_\_\_\_\_  
384 Woods Hole Road  
Woods Hole, MA 02543

Please mail to:

Executive Secretary  
US Board on Geographic Names  
National Geospatial-Intelligence Agency  
4600 Sangamore Road Mail Stop D-167  
Bethesda MD 20816-5003  
USA

UNITED STATES BOARD ON GEOGRAPHIC NAMES

UNDERSEA FEATURE NAME PROPOSAL

NAME PROPOSED: Uchupi Canyon

LOCATION: Continental slope, east coast North America

Ocean or Sea: North Atlantic Ocean

Coordinates:

point feature or center point:.....Lat. \_\_\_\_\_ Long. \_\_\_\_\_  
linear feature (from):.....Lat. 39d 41mN Long. 71d 51mW  
linear feature (to-midpoint or turning point):..... Lat. 39d 37mN Long. 71d 45mW  
linear feature (to):..... Lat. 39d 27mN Long. 71d 34mW  
areal feature - Northeast corner: .....Lat. \_\_\_\_\_ Long. \_\_\_\_\_  
- Southeast corner:.....Lat. \_\_\_\_\_ Long. \_\_\_\_\_  
- Southwest corner:.....Lat. \_\_\_\_\_ Long. \_\_\_\_\_  
- Northwest corner:.....Lat. \_\_\_\_\_ Long. \_\_\_\_\_

DESCRIPTION:

Feature type: Submarine Canyon Size and shape: \_\_\_\_\_  
Depth (max. and min.): 800 - 2250 Steepness, etc.: \_\_\_\_\_  
Associated features: \_\_\_\_\_

CHART OR MAP REFERENCE:

Name and feature shown on : \_\_\_\_\_  
Feature shown but not named on : \_\_\_\_\_

REASON FOR CHOICE OF NAME: Elazar Uchupi, (1928- ) geologist; scientist at Woods Hole Oceanographic Institution 1952 - present emeritus. Created first comprehensive bathymetric contour map of US Atlantic continental margin (1965); extensive marine geological research world wide.

DISCOVERY FACTS:

Date: August 2002 Discoverer (individual, ship): Canyon defined by multibeam echosounding survey aboard NOAA Ship Ronald H Brown.

Sounding equipment used: \_\_\_\_\_ Navigation type: GPS \_\_\_\_\_  
Estimated horizontal accuracy: ± \_\_\_\_\_ n.m./km Track spacing, crossings: \_\_\_\_\_

SUPPORTING MATERIALS: Please enclose references, reprints profiles, maps, etc.  
Shaded relief image of Ron Brown bathymetry, with contours at 100 m interval.

SUBMITTED BY: James Robb  
Organization and address: U.S. Geological Survey, Woods Hole Science Center, Woods Hole, MA, 02543

Please mail to:  
Executive Secretary  
US Board on Geographic Names  
National Geospatial-Intelligence Agency  
4600 Sangamore Road Mail Stop D-167  
Bethesda MD 20816-5003  
USA