

TOPOGRAPHY AND STRUCTURE OF TRENCHES AROUND JAPAN
— DATA ATLAS OF FRANCO-JAPANESE KAIKO PROJECT, PHASE I —

by

KAIKO I RESEARCH GROUP

1986



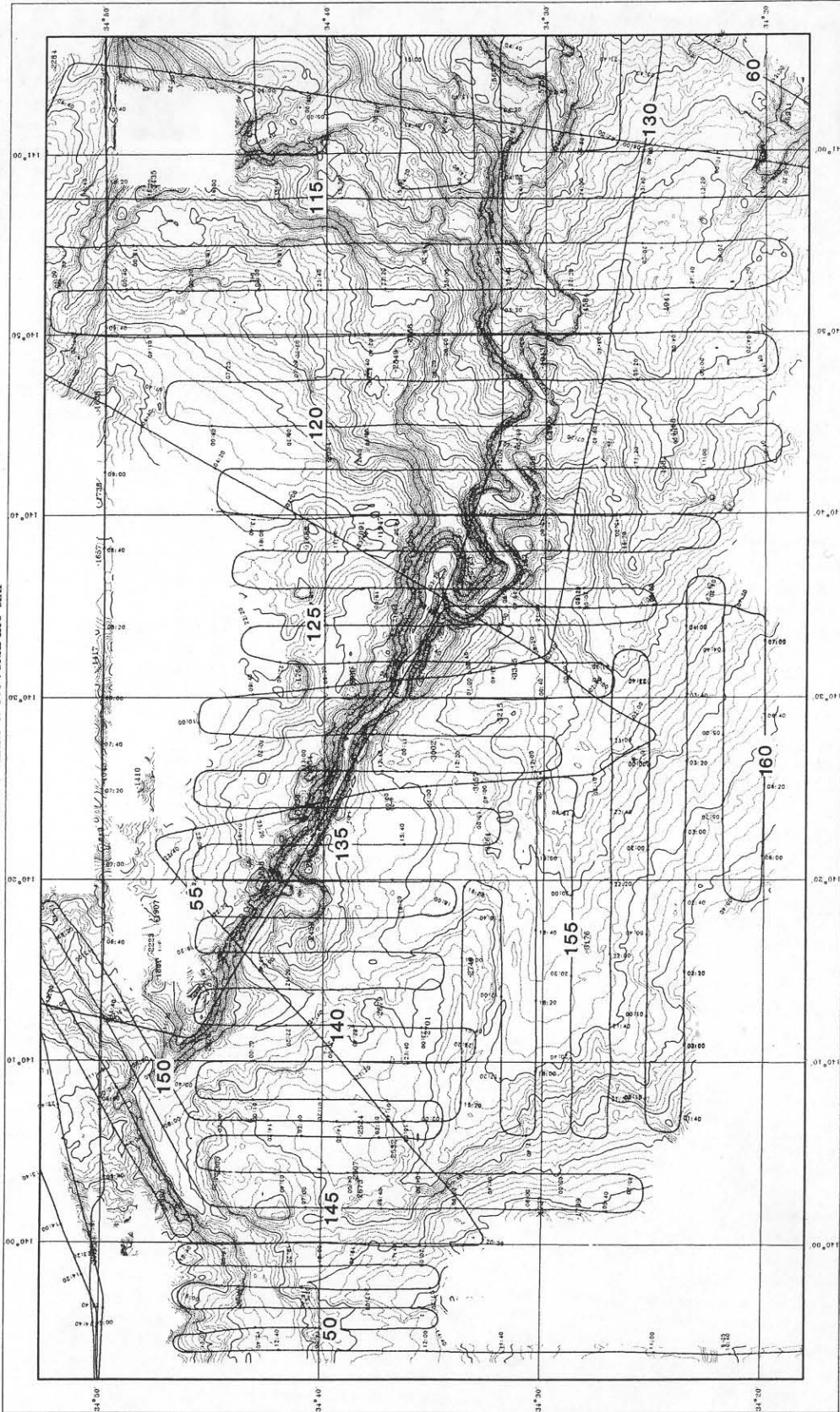
Ocean Research Institute, University of Tokyo

Institut Français de Recherche pour l'Exploitation
(IFREMER)

&

Centre National de la Recherche Scientifique
(CNRS)

(Box3) Sagami Trough and Boso Submarine Canyon
TRACK CHART & TOPOGRAPHIC MAP



CONTOUR INTERVAL = 50

SCALE = 1:350000