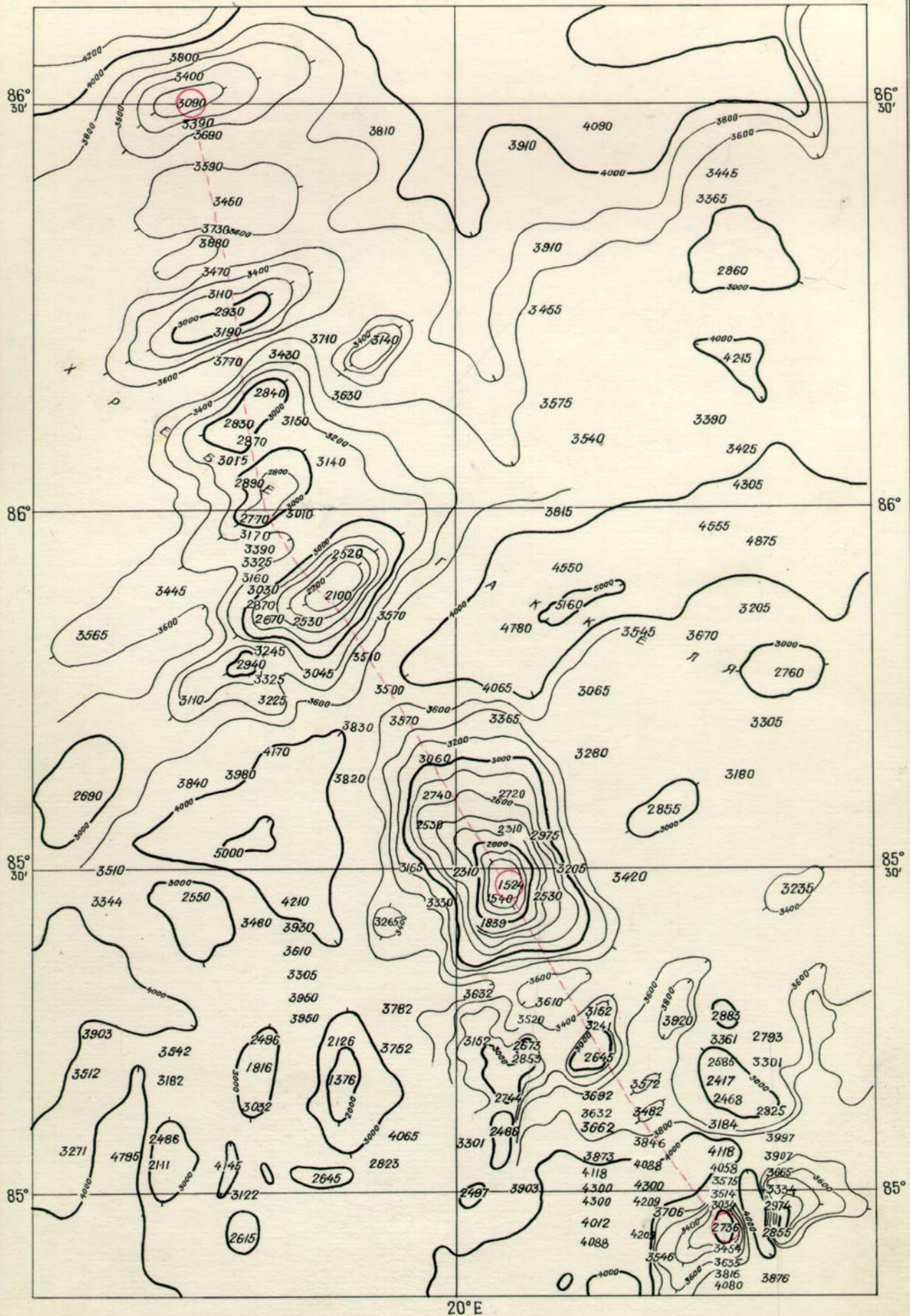
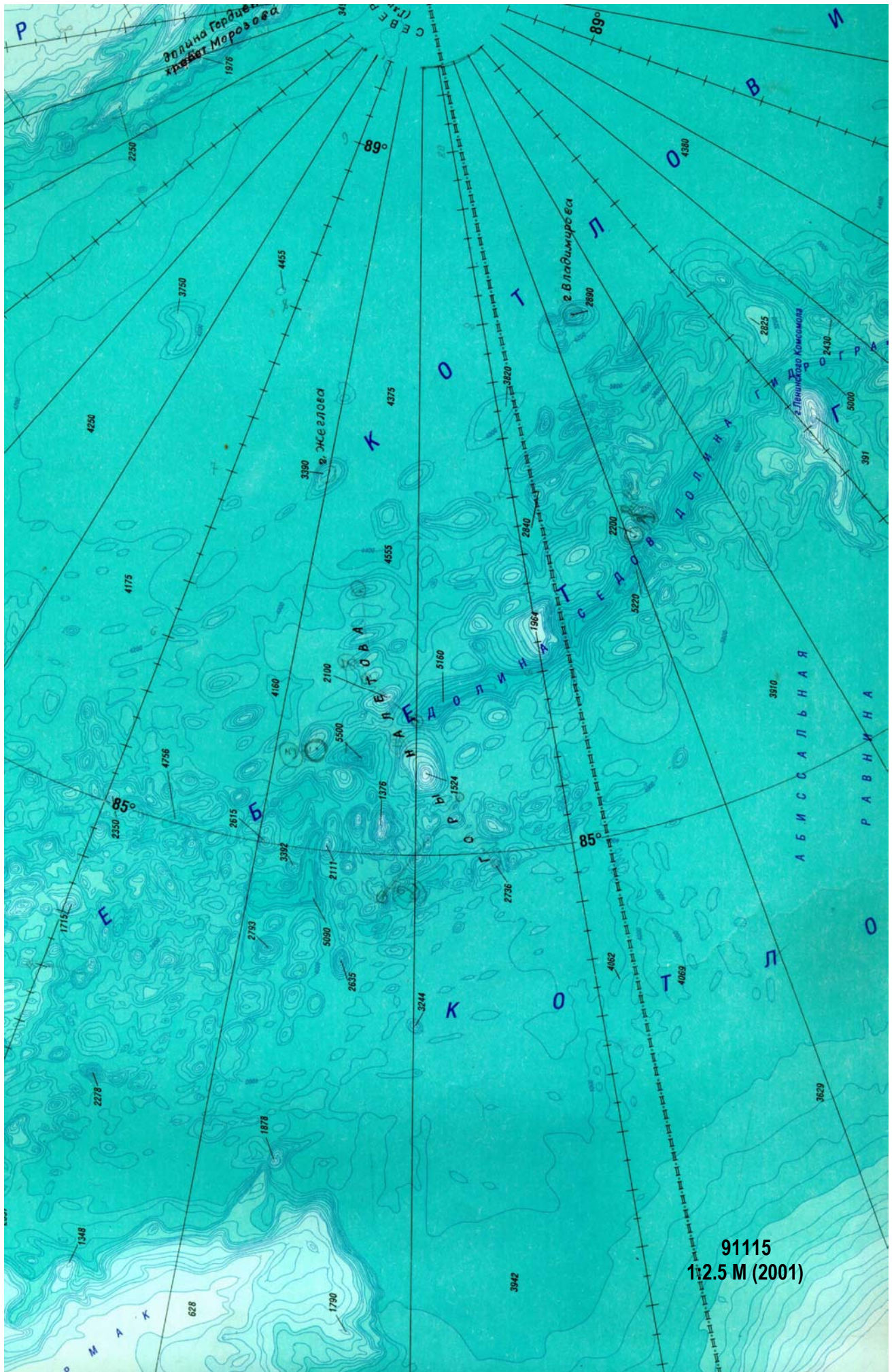




# Naletov Ridge

Discovered and surveyed by the Russian Arctic Hydrographic Expedition



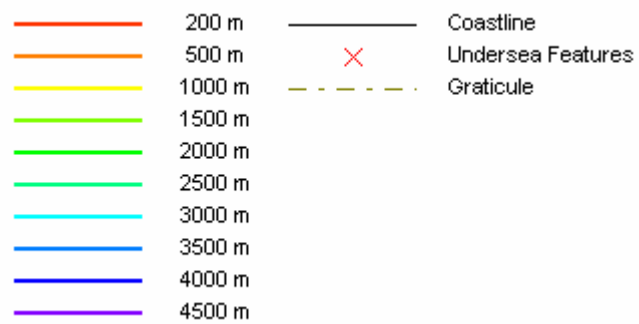
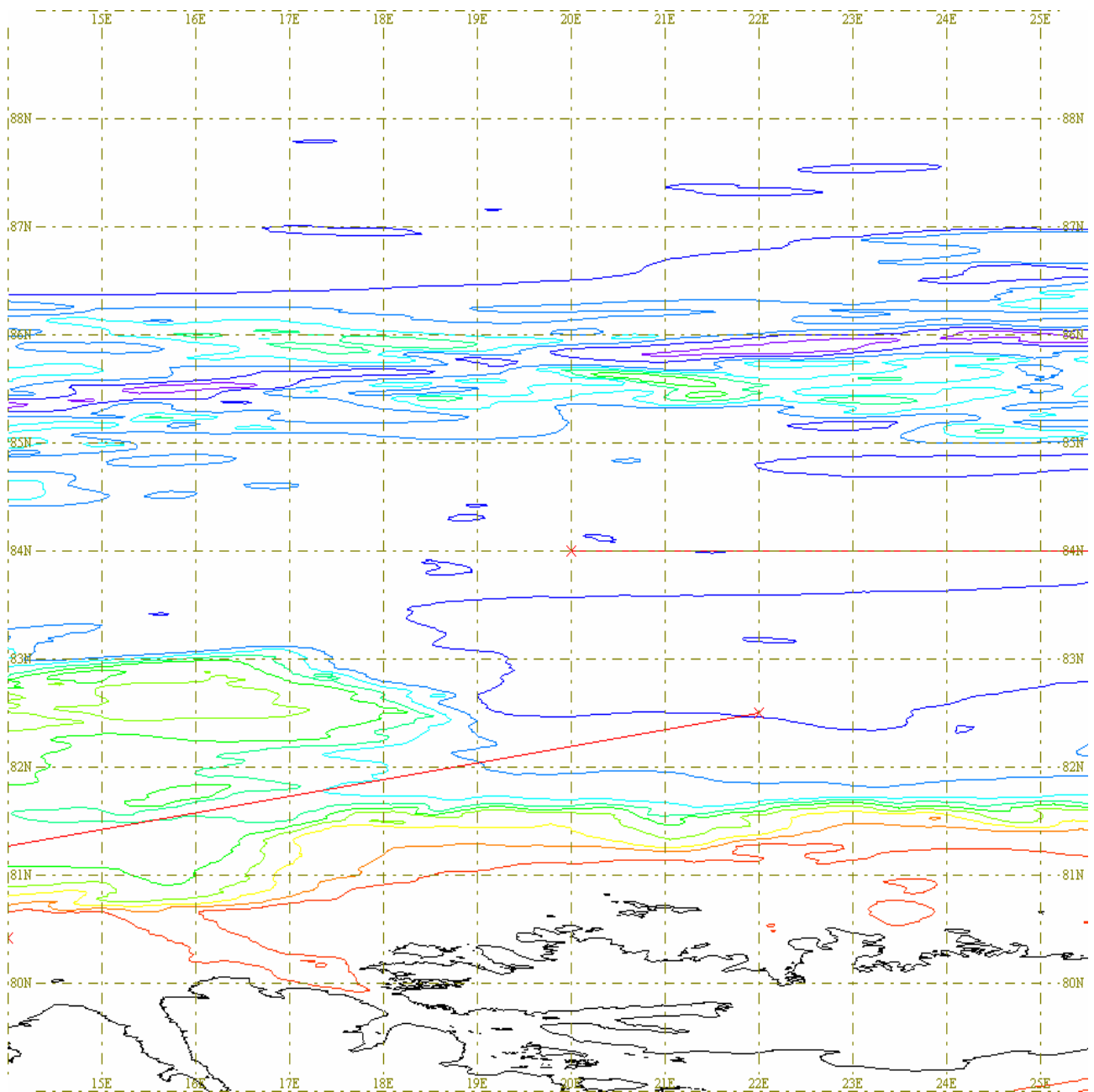


91115  
1:2.5 M (2001)

# Naletov Ridge

84°56.2' N 25°02.5' E to 86°30.5' N 14°55.0' E

GEBCO G·01



## **Naletov Nikolay Sergeevich**

(1923-2000)

He began his career in the North Hydrographic Expedition in 1948 as an assistant of the superintendent of works. He participated annually in the expeditions to the White and Barents Seas, carried out soundings in the vicinity of Novaya Zemlya, Ostrov Vaygach, in Kandalakshskiy Zaliv and Onezhskiy Zaliv, at Karel'skiy and Pomorskiy Coasts. In 1951 he was appointed a superintendent of hydrographic works and in 1974 due to his great experience in the field works and organizational abilities he was appointed a chief of a hydrographic party.

He participated in 33 expeditions to the Arctic seas. He was at the head and personally participated in the work on the sounding of more than 60 000 linear kilometres.

Not once he participated in the air expeditions into the high latitudes of the Arctic, took soundings from ice at Mendeleyev Rise and in Makarov and Nansen Basins.