

**UNDERSEA FEATURE NAME PROPOSAL**

**Ocean or Sea:** [East Sea](#)

**Name Proposed:** [Anyongbok Seamount](#)

**Coordinates:** A – of midpoint or summit: Lat. [37° 30.5'N](#) Long. [131° 21.5'E](#)  
[40 kilometres in E direction from Ulleung Do \('Do' means island\)](#)

B – extremities (if linear feature):

Lat:		to	Lat:
Long.			Long.

**Description** (kind of feature): [Seamount](#)

**Identifying or categorizing characteristics** (shape, dimensions, total relief, least depth, steepness, etc.):

[Anyongbok Seamount has a circular shape in the plane view and a cone shape in the vertical view. The minimum depth is 457 m and the bottom is defined by the 2,100 m depth contour. The relief is about 1,600 m.](#)

**Associated features:**

[Anyongbok Seamount is located between Ulleung Do and Dok Do.](#)

**Chart reference:**

**Shown with name on chart** [No. 102A \(scale 1:0.75 mln\), No. 138 \(1:0.5 mln\) and No. B4623\(Bathymatric chart, 1:0.5mln\) Published by Korea](#)

**Shown but not named on chart** No. \_\_\_\_\_

**Not shown but within area covered by chart** No. \_\_\_\_\_

**Reason for choice of name** (if a person, state how associated with the feature to be named):

['Anyongbok' Seamount is named after a famous Korean navigator, An Yong-Bok who explored Ulleung Do in the 17<sup>th</sup> century. He also served as a civilian diplomat and dedicated his life to developing fishing industries. \(Please refer to a separate sheet for more detailed information.\)](#)

**Discovery facts:**

**Date:** [May. ~ Jun. 1997](#) **by (ship):** [Haeyang 2000](#)

**By means of (equipment):** [Multi-Beam Echosounder \(SeaBeam 2100\)](#)

**Navigation used:** [DGPS \(Trimble DGPS 4000DS\)](#)

**Estimated positional accuracy in nautical miles:** [± 0.0027 miles](#)

**Description of survey** (track spacing, line crossings, grid network, etc.):

[The line spacing of survey tracks was less than 2 km in order to ensure 100 % coverage of our multi-beam system.](#)

**Nature and repository of other survey activities** (dredge samples, cores, magnetics, gravity, photographs, etc.):

[Gravity and magnetic surveys were also conducted.](#)

**Supporting material** (enclose, if possible, a sketch map of the survey area, profiles of the features, etc., with reference to prior publication, if any):

[See attached bathymetric maps, 3-D image maps, and survey track chart.](#)

**Submitted by:** The Korea Committee on Marine Geographical Names, Republic of Korea

**Date:** June 08, 2007

**Address:** 1-17, 7-ga Hang-dong, Jung-gu, Incheon, 400-800, Republic of Korea

Tel : +82 32 885 3825

Fax : +82 32 885 3088

**Concurred in by** (if applicable):

**National Authority** (if any): National Oceanographic Research Institute

**Address:** 1-17, 7-ga Hang-dong, Jung-gu, Incheon, 400-800, Republic of Korea

Tel : +82 32 885 3825

Fax : +82 32 885 3088

**Note:** this form should be forwarded, when completed:

**a) If the undersea feature is located in territorial waters :-**

to your "National Authority of Undersea Feature Names" or, if this does not exist or is not known, either to the International Hydrographic Bureau or to the Intergovernmental Oceanographic Commission (see addresses below) ;

**b) If the undersea feature is located in international waters :-**

to the International Hydrographic Bureau or to the Intergovernmental Oceanographic Commission, at the following addresses :

International Hydrographic Bureau  
4, quai Antoine 1er  
B.P. 445  
MC 98011 MONACO CEDEX  
Principality of MONACO  
Fax: +377 93 10 81 40  
E-mail: [info@ihb.mc](mailto:info@ihb.mc)

Intergovernmental Oceanographic Commission  
UNESCO  
Place de Fontenoy  
75700 PARIS  
FRANCE  
Fax: +33 1 45 68 58 12  
E-mail: [info@unesco.org](mailto:info@unesco.org)

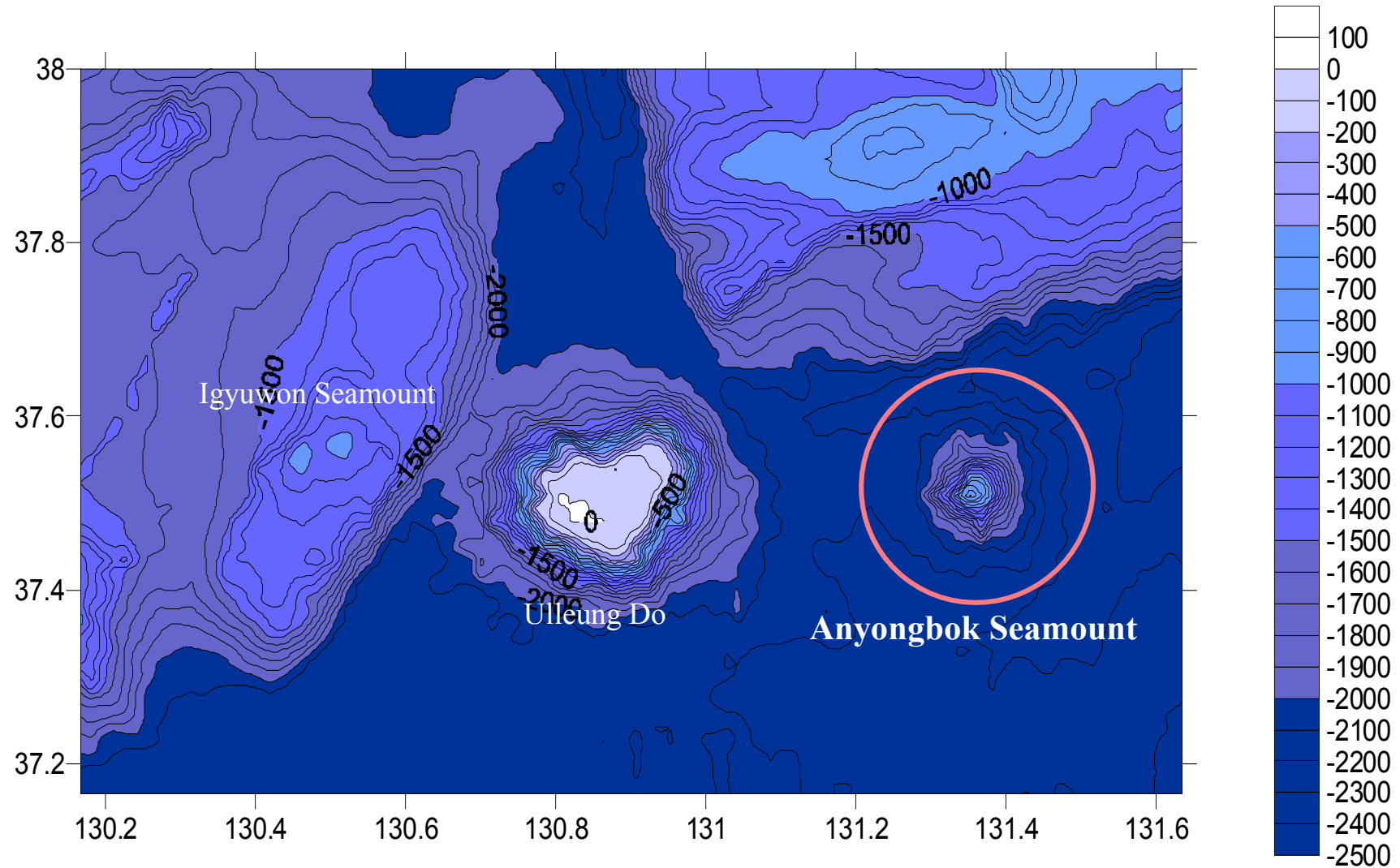
## **An Yong-Bok (1650~1710)**

An Yong-Bok was a Korean navigator and explorer who lived in the 17<sup>th</sup> century. He was born in Busan in 1650 during Chosun Dynasty and learned the navigational and shipbuilding skills by enlisting in the army in his early age.

After the military service, he devoted himself to enlarging the fishing areas to offshore by exploring Ulleung Do and Dok Do in the East Sea through introduction of a corporate fishery framework and recruiting the fishing vessels.

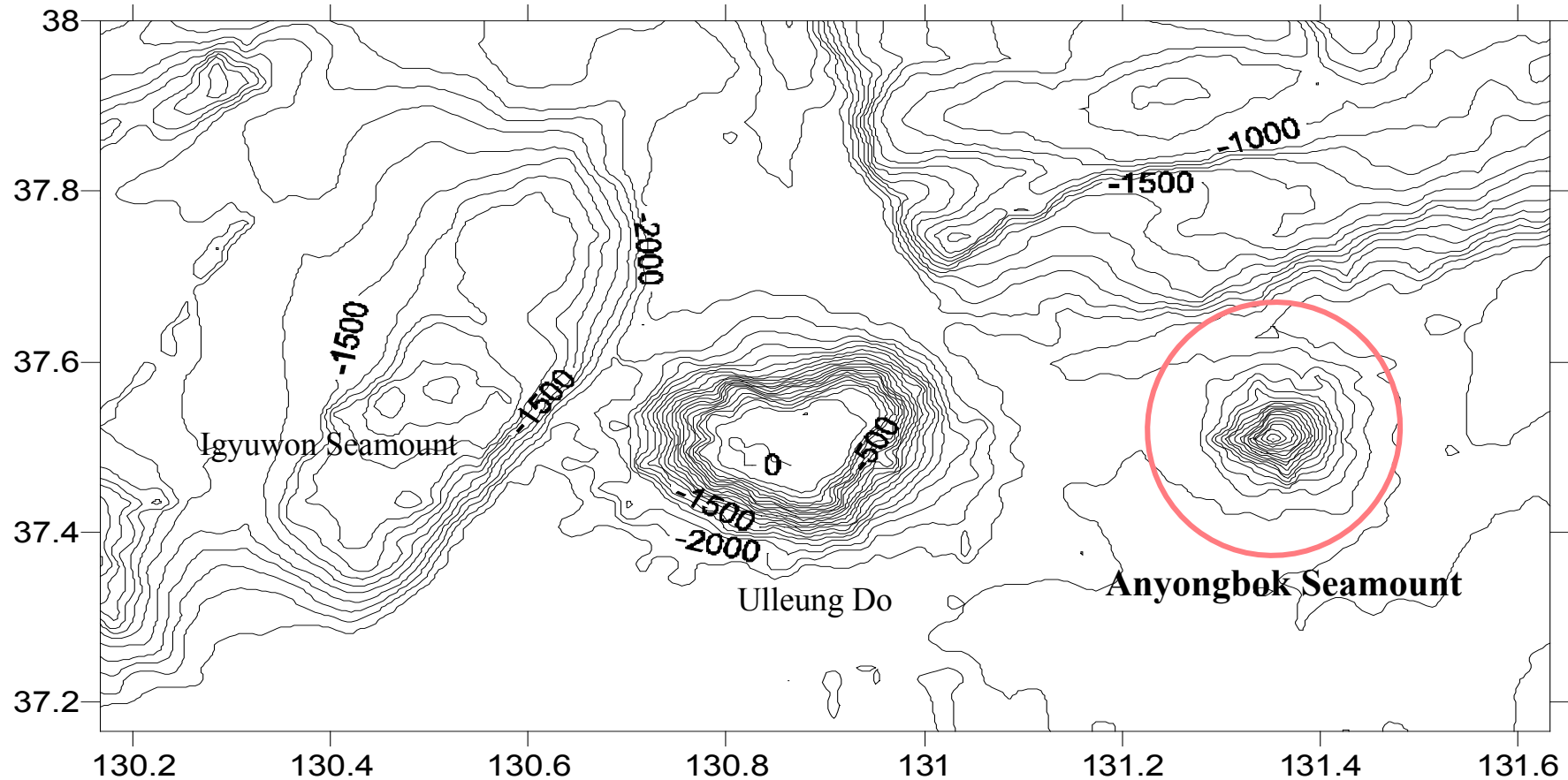
As a civilian diplomat, he had contributed to improving relations with the fishermen of neighboring countries, winning the respect from the Korean people up to date.

# Anyongbok Seamount



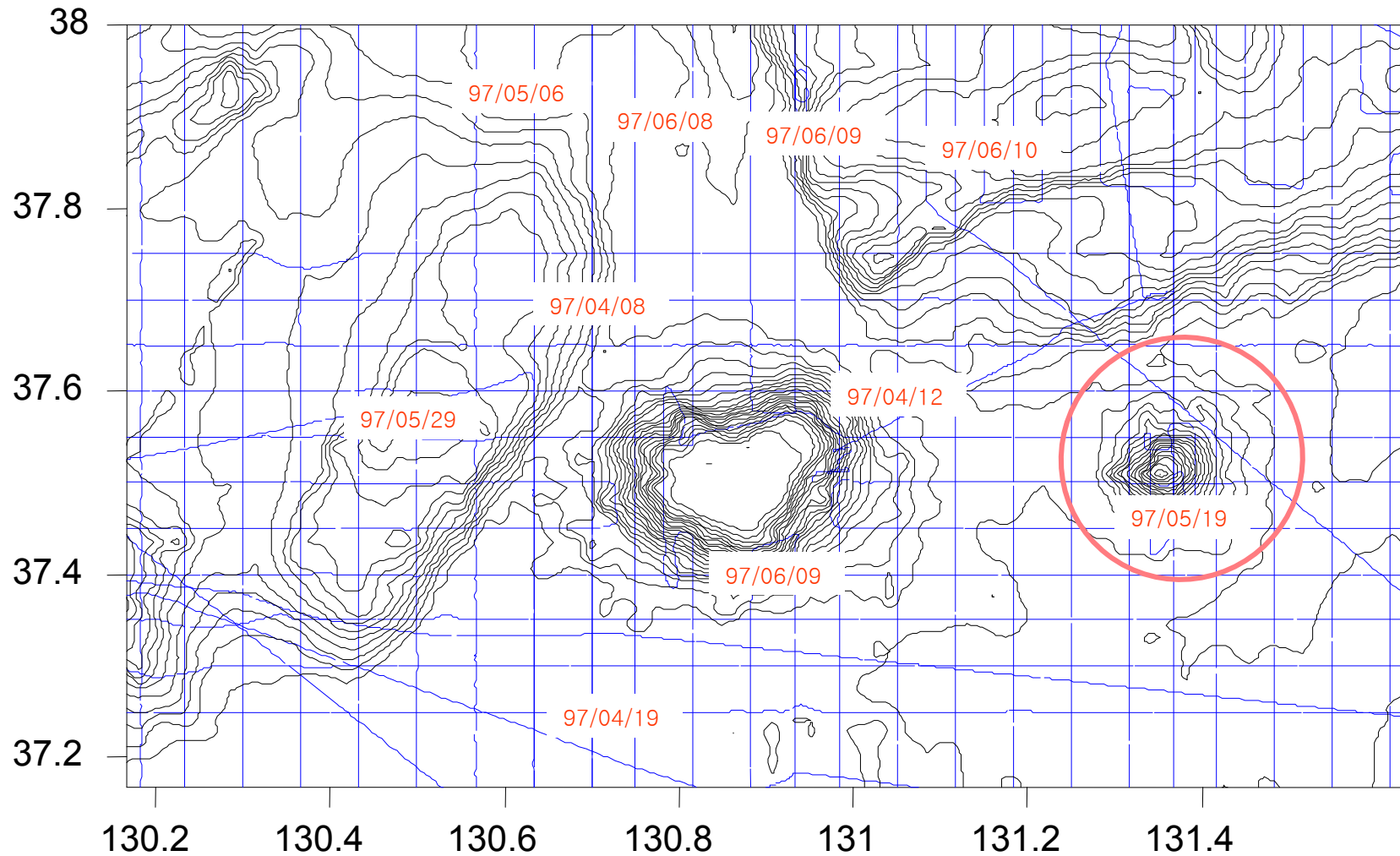
Bathymetric contour Map of Anyongbok Seamount (Contour interval : 100 m)

# Anyongbok Seamount



Bathymetric contour Map of Anyongbok Seamount (Contour interval : 100 m)

# Anyongbok Seamount



The track lines and date in survey area

# Anyongbok Seamount

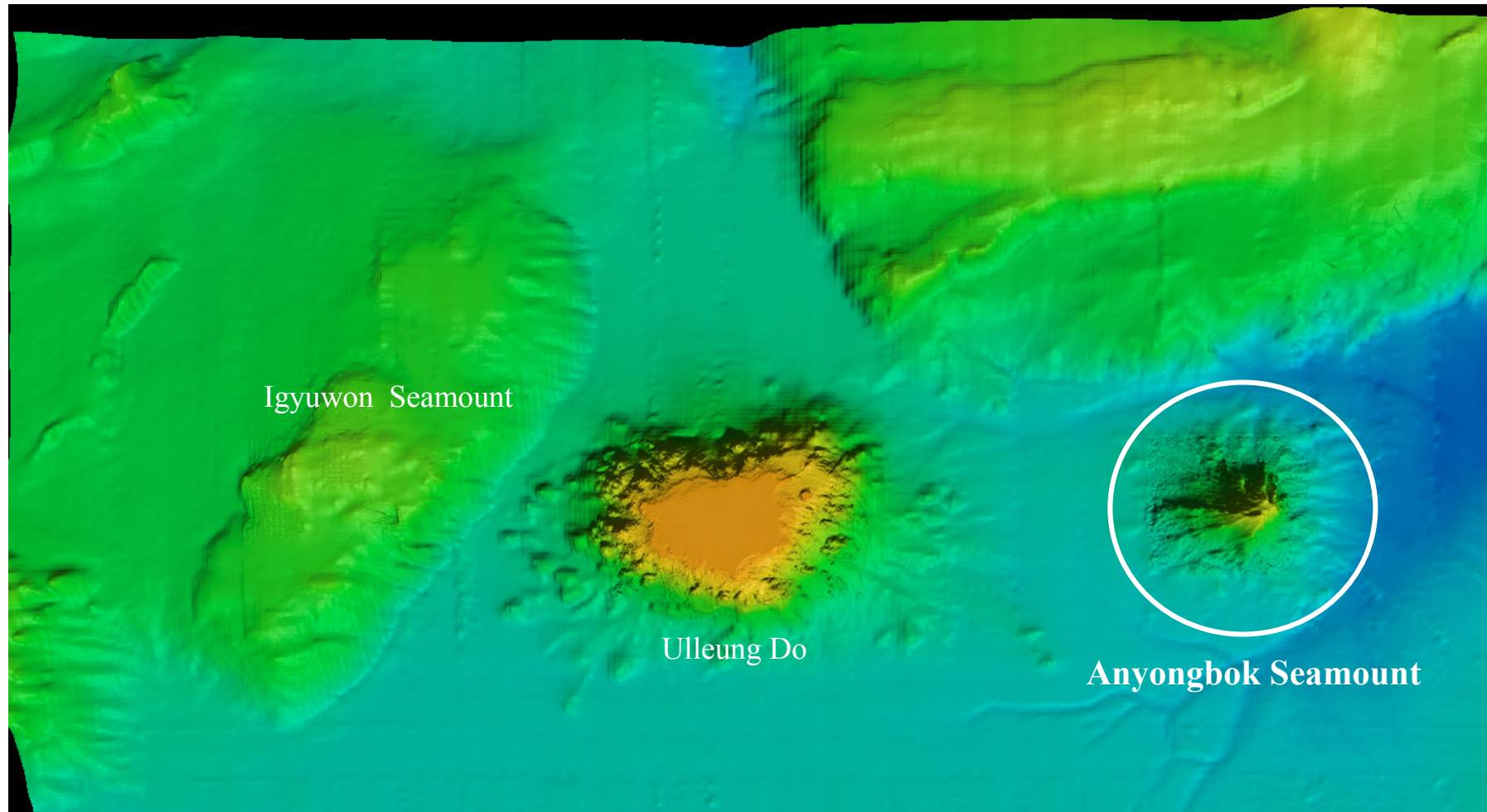


Image Map of Anyongbok Seamount



# Anyongbok Seamount

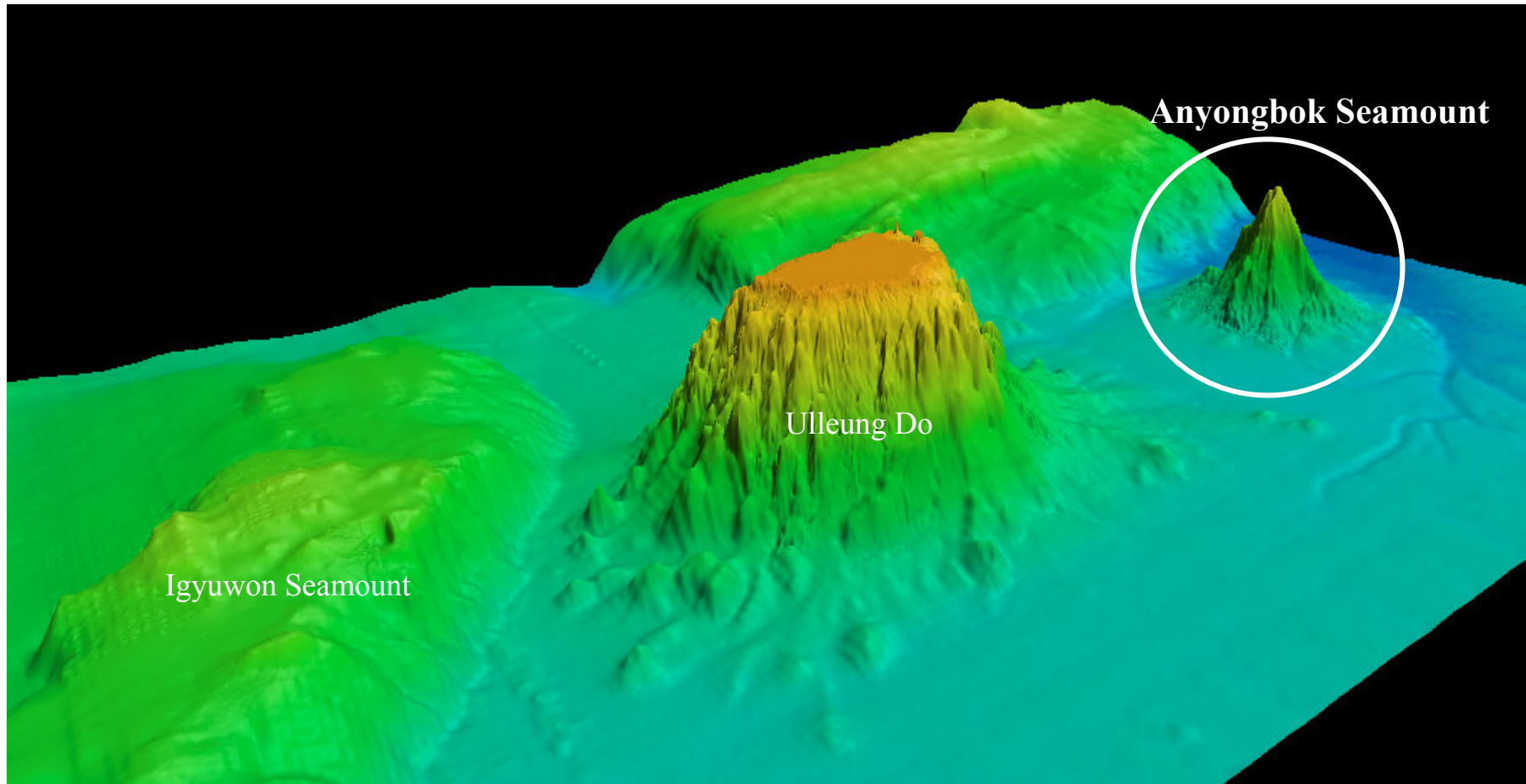


Image Map of Anyongbok Seamount

# Anyongbok Seamount

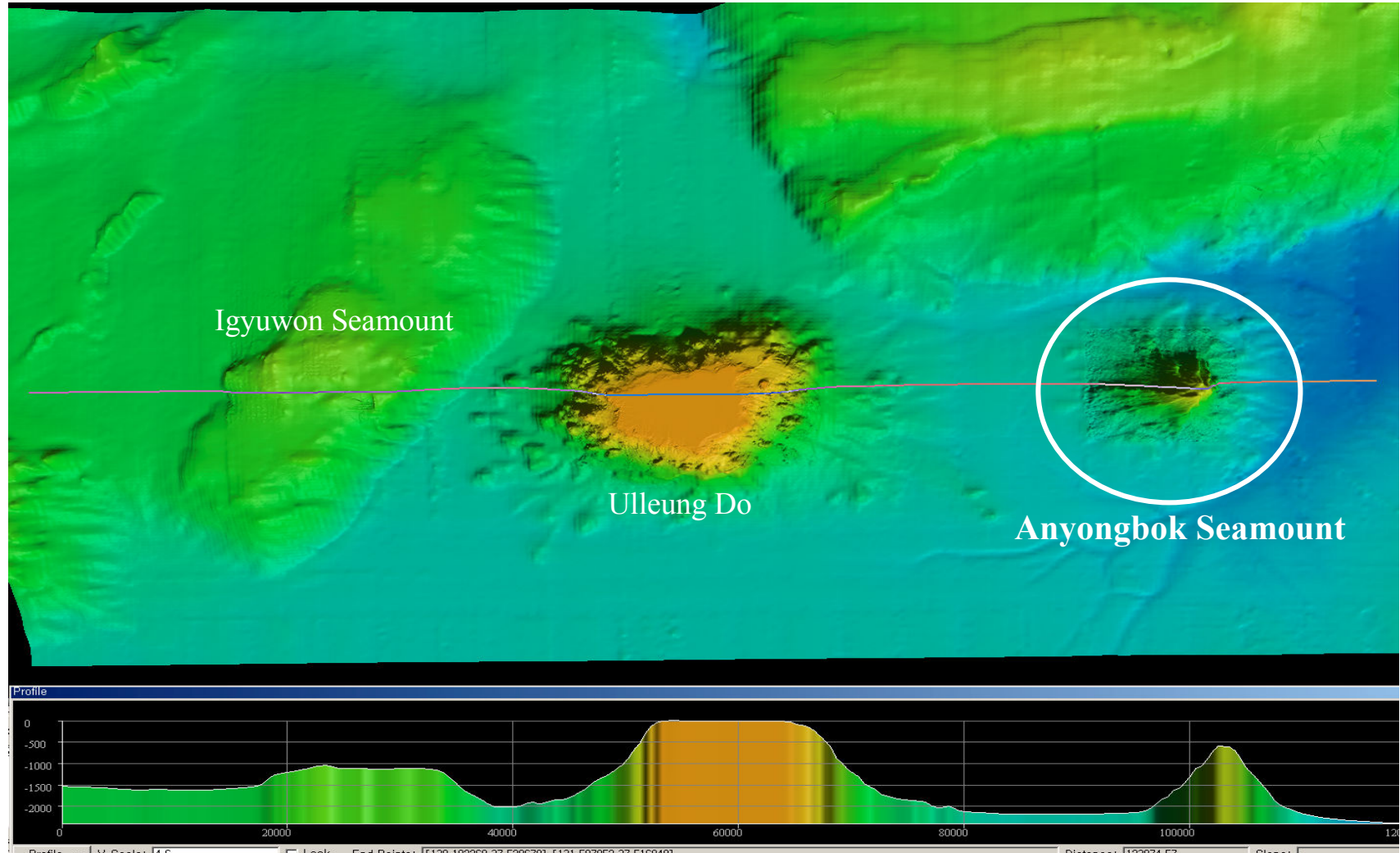


Image Map and Profile at the cross of Anyongbok Seamount.