

UNDERSEA FEATURE NAME PROPOSAL

Ocean or Sea: [East Sea](#)

Name Proposed: [Gangwon Plateau](#)

Coordinates: A – of midpoint or summit: Lat. [38° 00'N](#) Long. [130° 00'E](#)
[100 kilometres in E direction from \[Gangwon Province of the Republic of Korea\]\(#\)](#)

B – extremities (if linear feature):

Lat. [38° 00'N](#)

Lat. [37° 47'N](#)

Long. [129° 25'E](#)

to

Long. [130° 43'E](#)

Description (kind of feature): [Plateau](#)

Identifying or categorizing characteristics (shape, dimensions, total relief, least depth, steepness, etc.):

[Gangwon Plateau is the western one of the two plateaus that constitute Korea Plateau. Having major seamounts and basins, Gangwon Plateau's size is about 140 km from the south to the north, and about 100 km from east to west.](#)

Associated features:

Chart reference:

Shown with name on chart [No. 102A \(scale 1:0.75 mln\), No. 138 \(1:0.5 mln\) and No. B4623\(Bathymetric chart, 1:0.5mln\) published by Korea](#)

Shown but not named on chart No. _____

Not shown but within area covered by chart No. _____

Reason for choice of name (if a person, state how associated with the feature to be named):

['Gangwon' is the name of the nearest inland province in Korea to this feature. Gangwon Plateau is about 100 km distant from the coast of Gangwon Province.](#)

Discovery facts:

Date: [Apr. ~ Jun. 1997](#) **by** (ship): [Haeyang 2000](#)

By means of (equipment): [Multi-Beam Echosounder \(SeaBeam 2100\)](#)

Navigation used: [DGPS \(Trimble DGPS 4000DS\)](#)

Estimated positional accuracy in nautical miles: [± 0.0027 miles](#)

Description of survey (track spacing, line crossings, grid network, etc.):

[The line spacing of survey tracks was less than 2 km in order to ensure 100 % coverage of the multi-beam system.](#)

Nature and repository of other survey activities (dredge samples, cores, magnetics, gravity, photographs, etc.):

[Gravity and magnetic surveys were also conducted.](#)

Supporting material (enclose, if possible, a sketch map of the survey area, profiles of the features, etc., with reference to prior publication, if any):

[See attached bathymetric maps, 3-D image maps, and survey track chart.](#)

Submitted by: [The Korea Committee on Marine Geographical Names, Republic of Korea](#)

Date: [June 08, 2007](#)

Address: [1-17, 7-ga Hang-dong, Jung-gu, Incheon, 400-800, Republic of Korea](#)

[Tel : +82 32 885 3825](#)

[Fax : +82 32 885 3088](#)

Concurred in by (if applicable):

National Authority (if any): [National Oceanographic Research Institute](#)

Address: [1-17, 7-ga Hang-dong, Jung-gu, Incheon, 400-800, Republic of KOREA](#)

[Tel : +82 32 885 3825](#)

[Fax : +82 32 885 3088](#)

Note: this form should be forwarded, when completed:

a) If the undersea feature is located in territorial waters :-

to your "National Authority of Undersea Feature Names" or, if this does not exist or is not known, either to the International Hydrographic Bureau or to the Intergovernmental Oceanographic Commission (see addresses below) ;

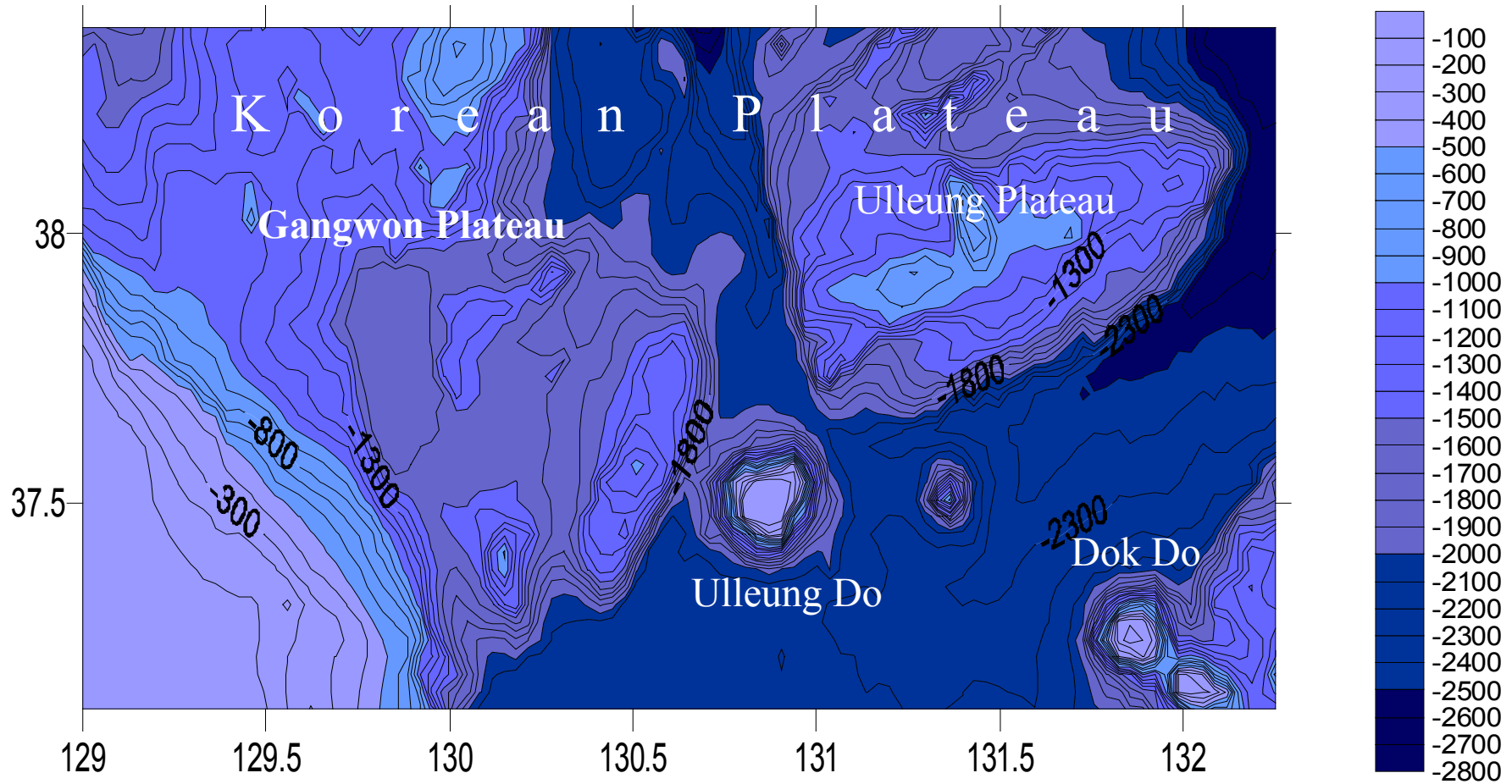
b) If the undersea feature is located in international waters :-

to the International Hydrographic Bureau or to the Intergovernmental Oceanographic Commission, at the following addresses :

International Hydrographic Bureau
4, quai Antoine 1er
B.P. 445
MC 98011 MONACO CEDEX
Principality of MONACO
Fax: +377 93 10 81 40
E-mail: info@ihb.mc

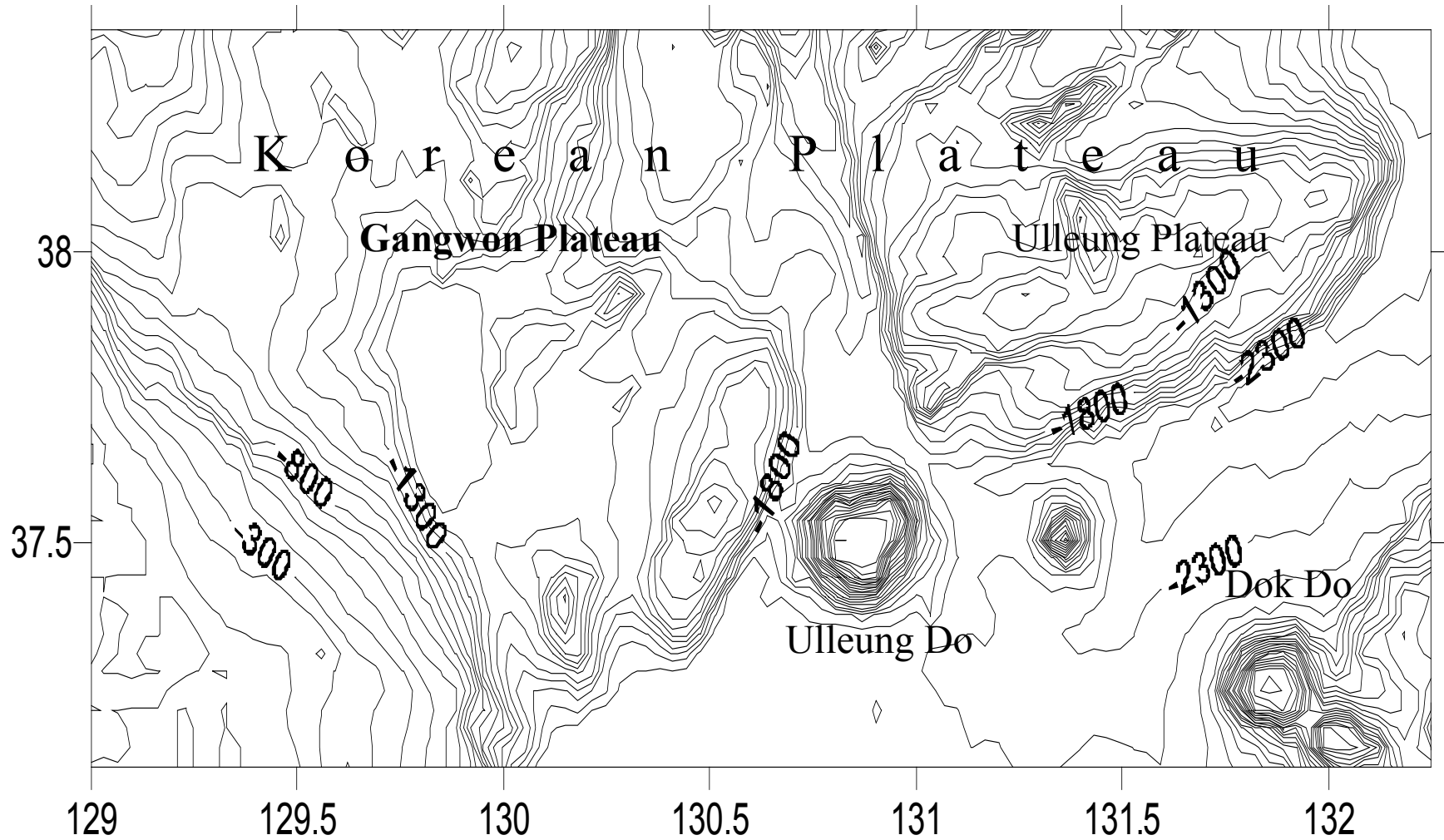
Intergovernmental Oceanographic Commission
UNESCO
Place de Fontenoy
75700 PARIS
FRANCE
Fax: +33 1 45 68 58 12
E-mail: info@unesco.org

Gangwon Plateau



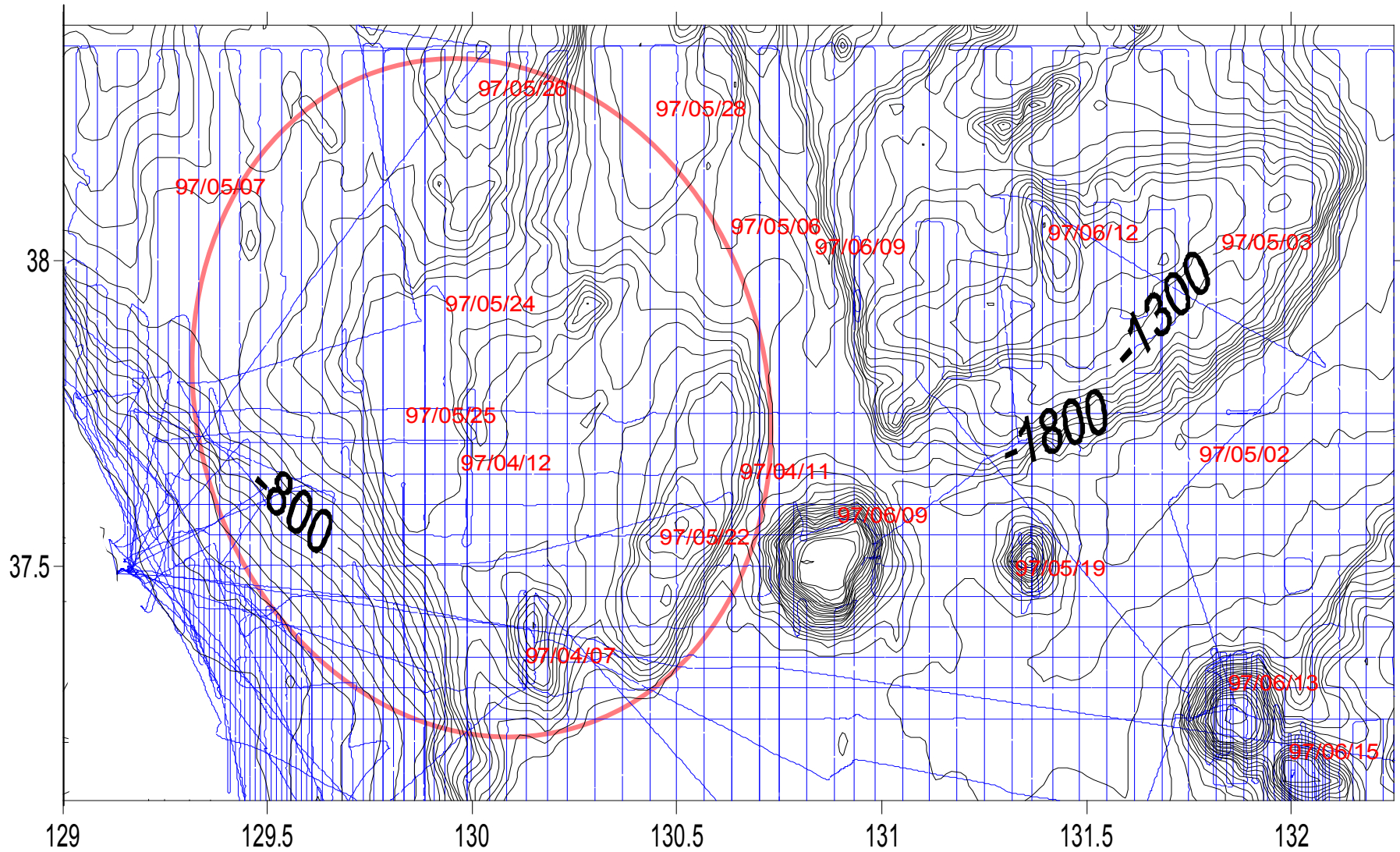
Bathymetric contour Map of Gangwon Plateau(Contour interval : 100 m)

Gangwon Plateau



Bathymetric contour Map of Gangwon Plateau(Contour interval : 100 m)

Gangwon Plateau



The track lines and date in survey area

Gangwon Plateau

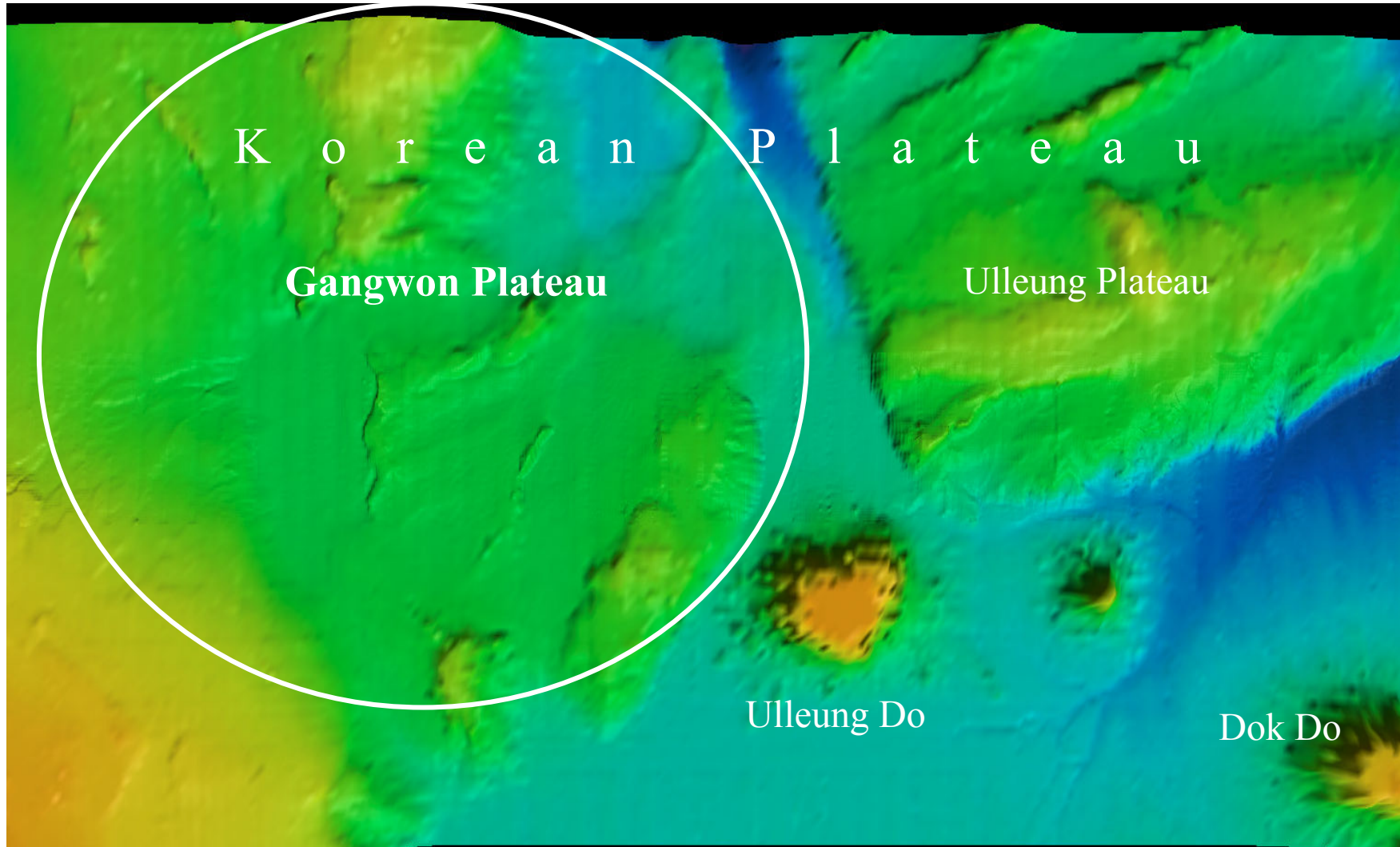


Image Map of Gangwon Plateau

Gangwon Plateau

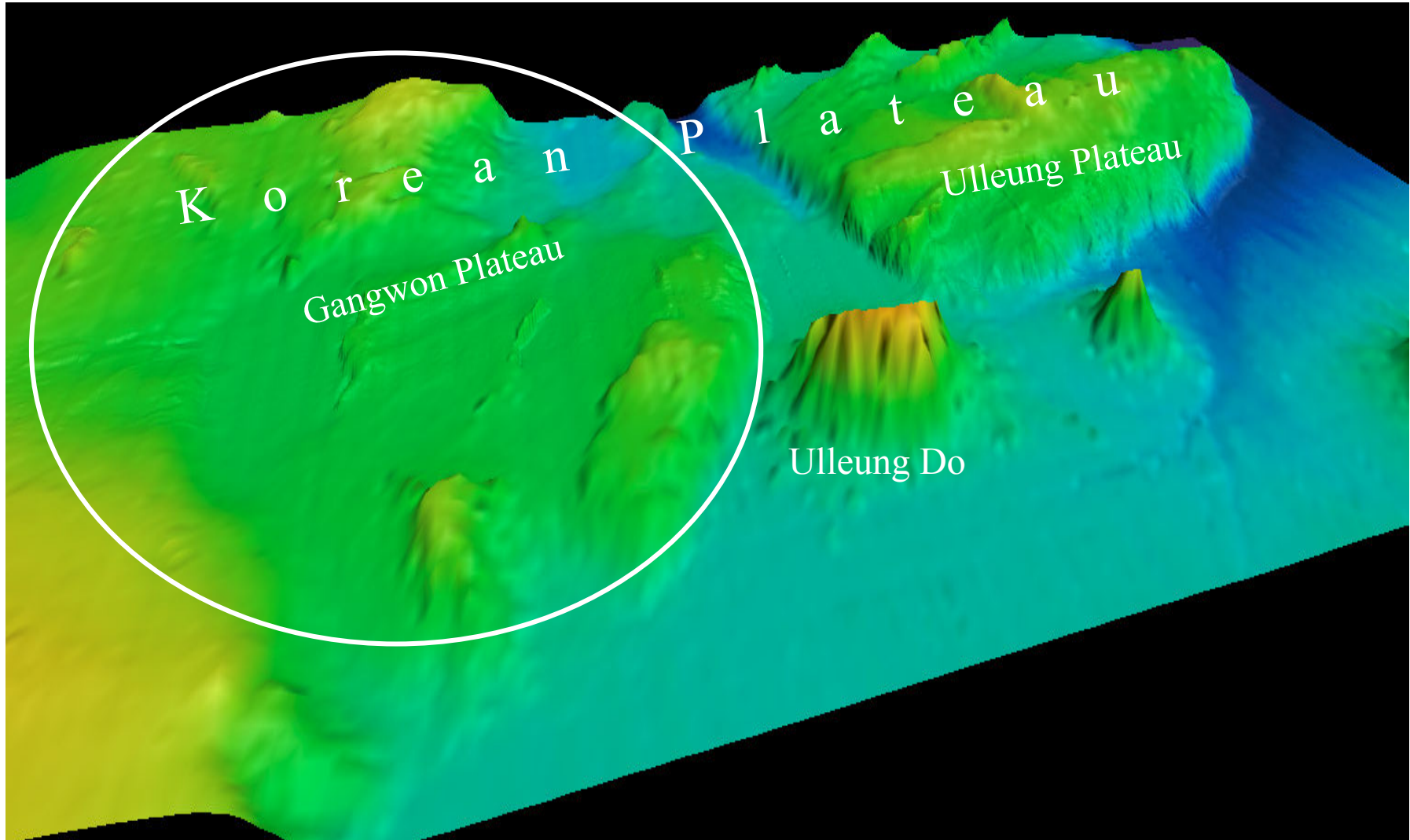


Image Map of Gangwon Plateau

Gangwon Plateau

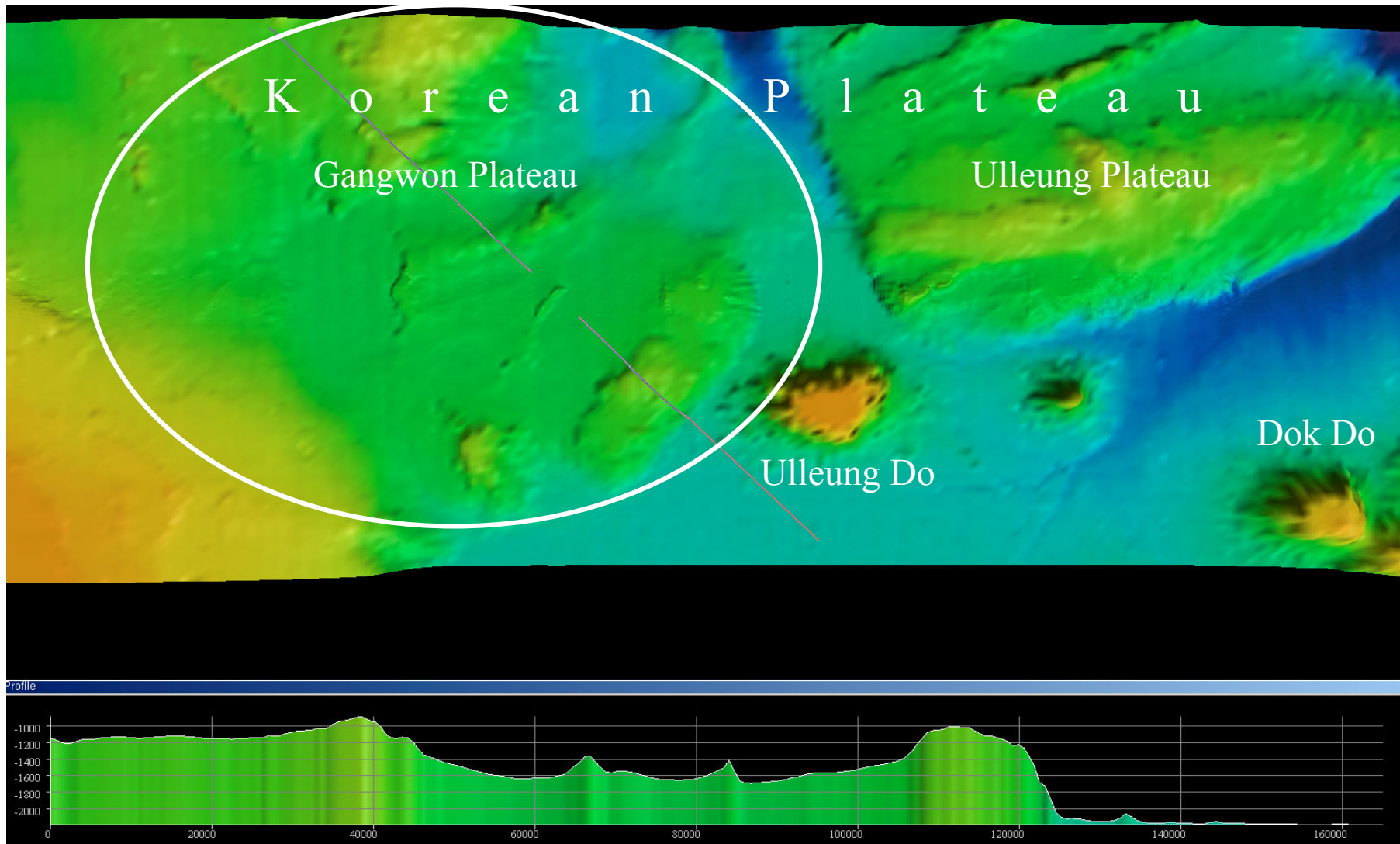


Image Map and Profile at the cross of Gangwon Plateau