

UNDERSEA FEATURE NAME PROPOSAL

Ocean or Sea: [East Sea](#)

Name Proposed: [Hupo Bank](#)

Coordinates: A – of midpoint or summit: Lat. [36° 40' N](#) Long. [129° 45' E](#)
[25 kilometres in E direction from Hupo Hang \('Hang' means harbor\)](#)

B – extremities (if linear feature):

Lat. [36° 22' N](#)

Lat. [37° 07' N](#)

Long. [129° 43' E](#)

to

Long. [129° 36' E](#)

Description (kind of feature): [Bank](#)

Identifying or categorizing characteristics (shape, dimensions, total relief, least depth, steepness, etc.):

[Hupo Bank is an elongated, narrow feature in a N-S direction with a slope angle of about 4° to 8° . The length is about 85 km, and the width varies in the range of 2.5 to 16.5 km. The water depth averages less than 150m. The top of Hupo Bank, which is located at 36° 43' 09" N, 129° 43' 55" E, is called 'Wangdolcho' \('cho' means a reef\). Wangdolcho is 5.3 m deep and represents a hazard to surface navigation.](#)

Associated features:

Chart reference:

Shown with name on chart [No. 102A \(scale 1:0.75 mln\), No. 138 \(1:0.5 mln\) and No. B4623\(Bathymatric chart, 1:0.5mln\) Published by Korea](#)

Shown but not named on chart No. _____

Not shown but within area covered by chart No. _____

Reason for choice of name (if a person, state how associated with the feature to be named):

[The name 'Hupo' is originated from the nearest harbor called Hupo Hang, located on the east coast of Gyeongsangbuk Province in Korea. The name 'Hupo Bank' has been used in many research papers since the early 1970s.](#)

Discovery facts:

Date: [Apr. ~ Nov. 1996](#) **by (ship):** [Haeyang 2000](#)

By means of (equipment): [Multi-Beam Echosounder \(SeaBeam 2100\)](#)

Navigation used: [DGPS \(Trimble DGPS 4000DS\)](#)

Estimated positional accuracy in nautical miles: [± 0.0027 miles](#)

Description of survey (track spacing, line crossings, grid network, etc.):

[The line spacing of survey tracks was less than 400 m in order to ensure 100 % coverage of our multi-beam system.](#)

Nature and repository of other survey activities (dredge samples, cores, magnetics, gravity, photographs, etc.):

[Gravity and magnetic surveys were also conducted.](#)

Supporting material (enclose, if possible, a sketch map of the survey area, profiles of the features, etc., with reference to prior publication, if any):

[See attached bathymetric maps, 3-D image maps, and survey track chart.](#)

Submitted by: [The Korea Committee on Marine Geographical Names, Republic of Korea](#)

Date: [June 08, 2007](#)

Address: [1-17, 7-ga Hang-dong, Jung-gu, Incheon, 400-800, Republic of Korea](#)

[Tel : +82 32 885 3825](#)

[Fax : +82 32 885 3088](#)

Concurred in by (if applicable):

National Authority (if any): [National Oceanographic Research Institute](#)

Address: [1-17, 7-ga Hang-dong, Jung-gu, Incheon, 400-800, Republic of Korea](#)

[Tel : +82 32 885 3825](#)

[Fax : +82 32 885 3088](#)

Note: this form should be forwarded, when completed:

a) If the undersea feature is located in territorial waters :-

to your "National Authority of Undersea Feature Names" or, if this does not exist or is not known, either to the International Hydrographic Bureau or to the Intergovernmental Oceanographic Commission (see addresses below) ;

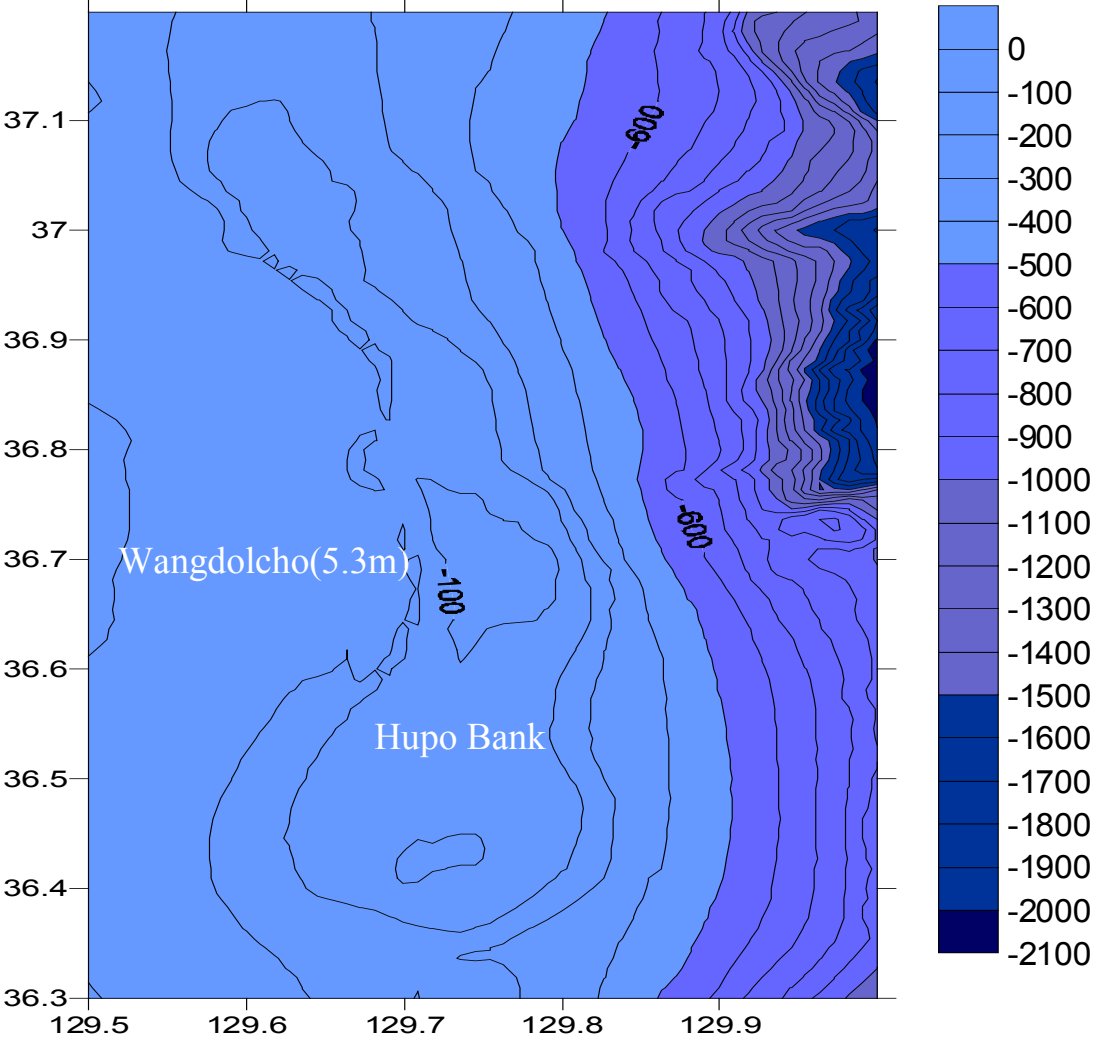
b) If the undersea feature is located in international waters :-

to the International Hydrographic Bureau or to the Intergovernmental Oceanographic Commission, at the following addresses :

International Hydrographic Bureau
4, quai Antoine 1er
B.P. 445
MC 98011 MONACO CEDEX
Principality of MONACO
Fax: +377 93 10 81 40
E-mail: info@ihb.mc

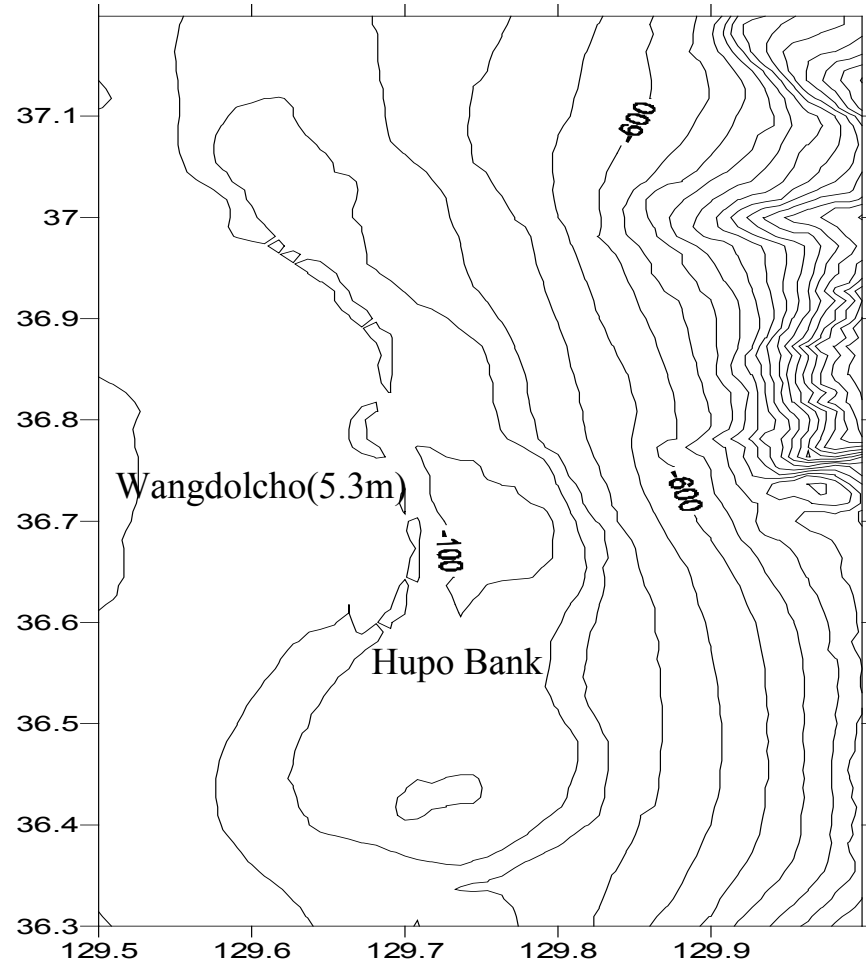
Intergovernmental Oceanographic Commission
UNESCO
Place de Fontenoy
75700 PARIS
FRANCE
Fax: +33 1 45 68 58 12
E-mail: info@unesco.org

Hupo Bank



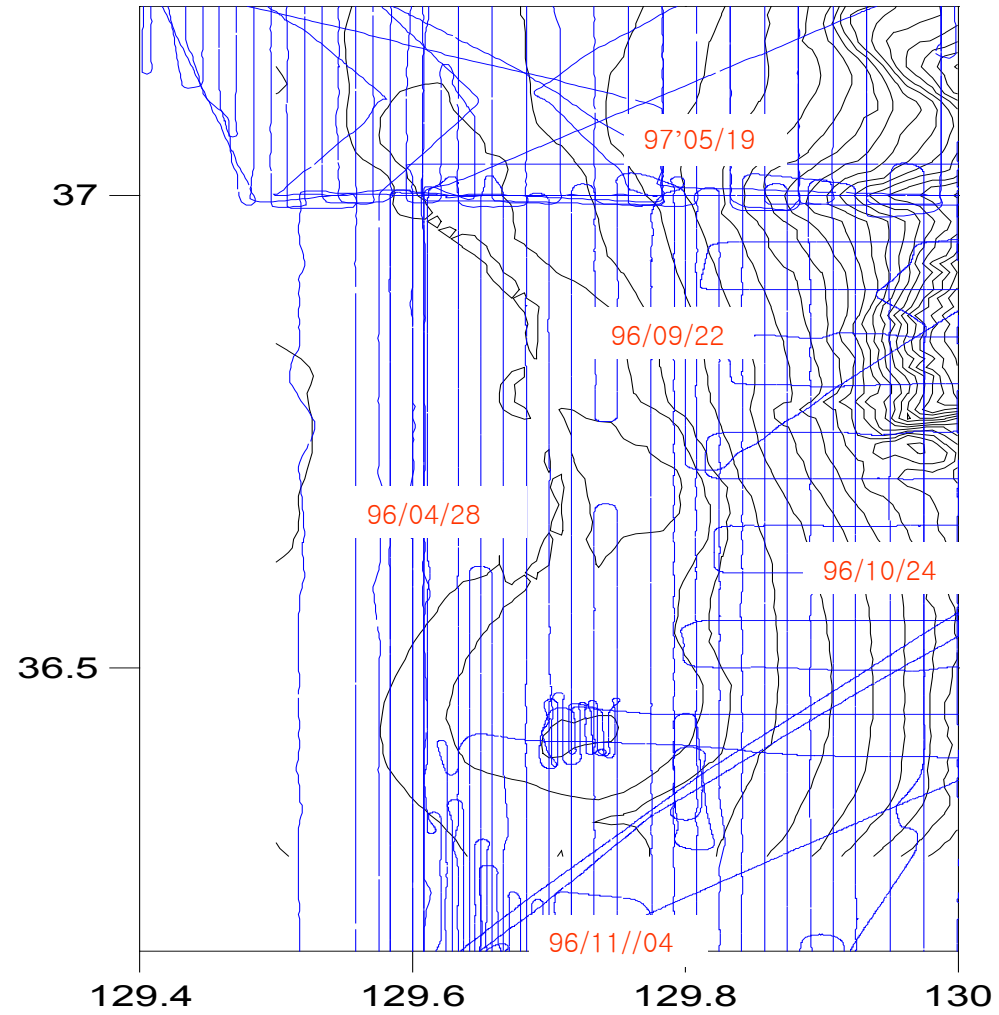
Bathymetric contour Map of Hupo Bank (Contour interval : 100m)

Hupo Bank



Bathymetric contour Map of Hupo Bank (Contour interval : 100m)

Hupo Bank



The track lines and date in survey area

Hupo Bank

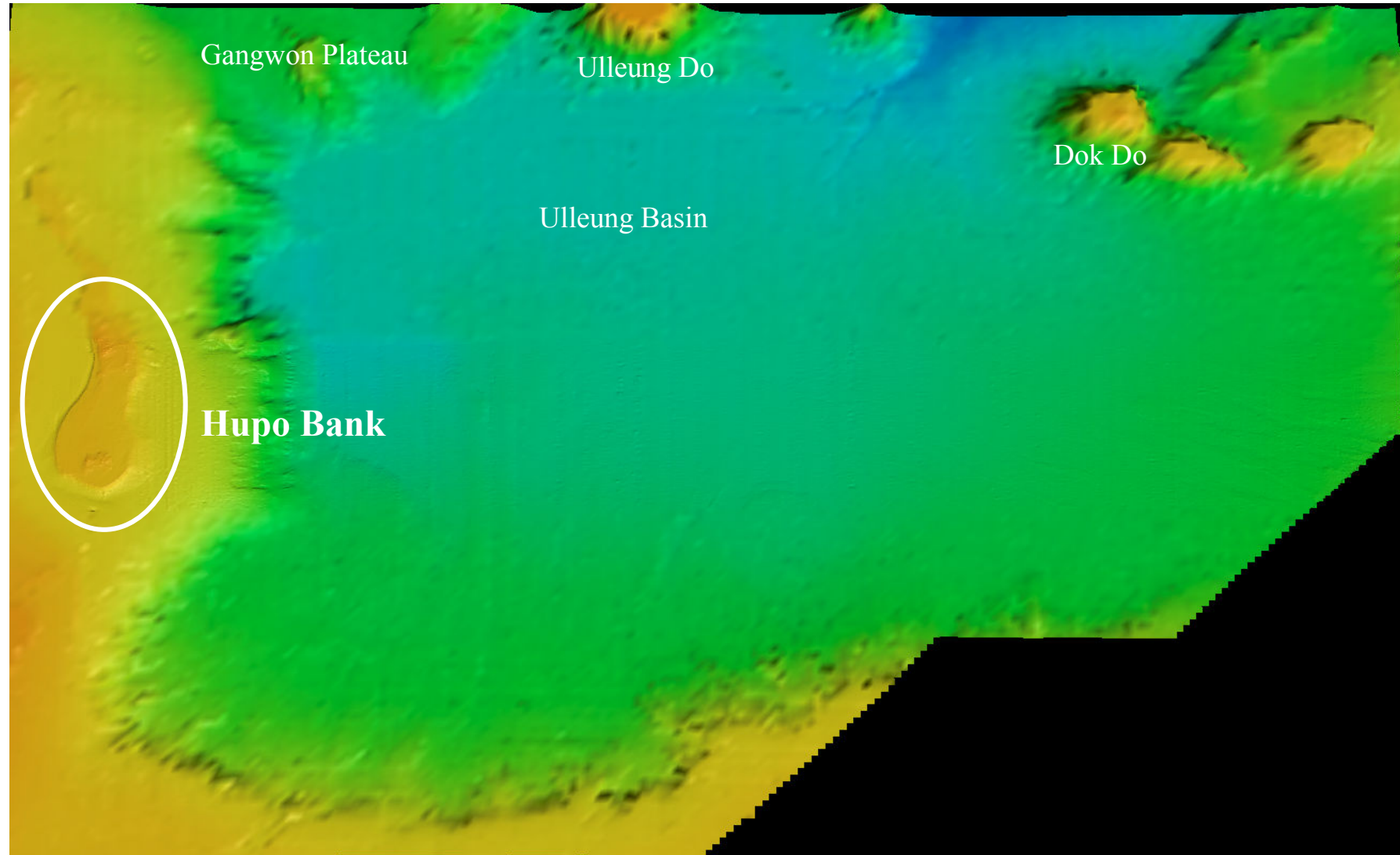


Image Map of Hupo Bank

Hupo Bank

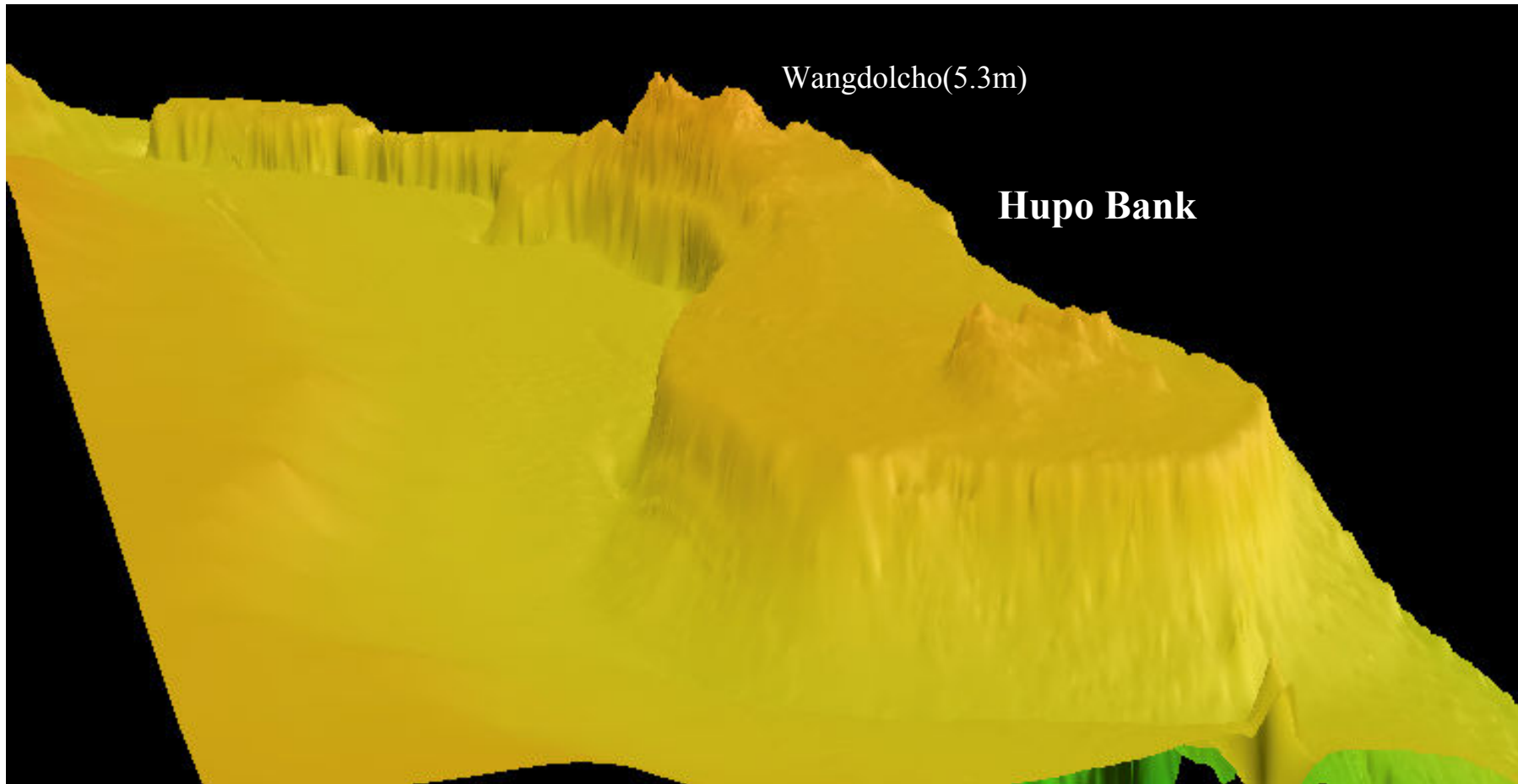


Image Map of Hupo Bank

Hupo Bank

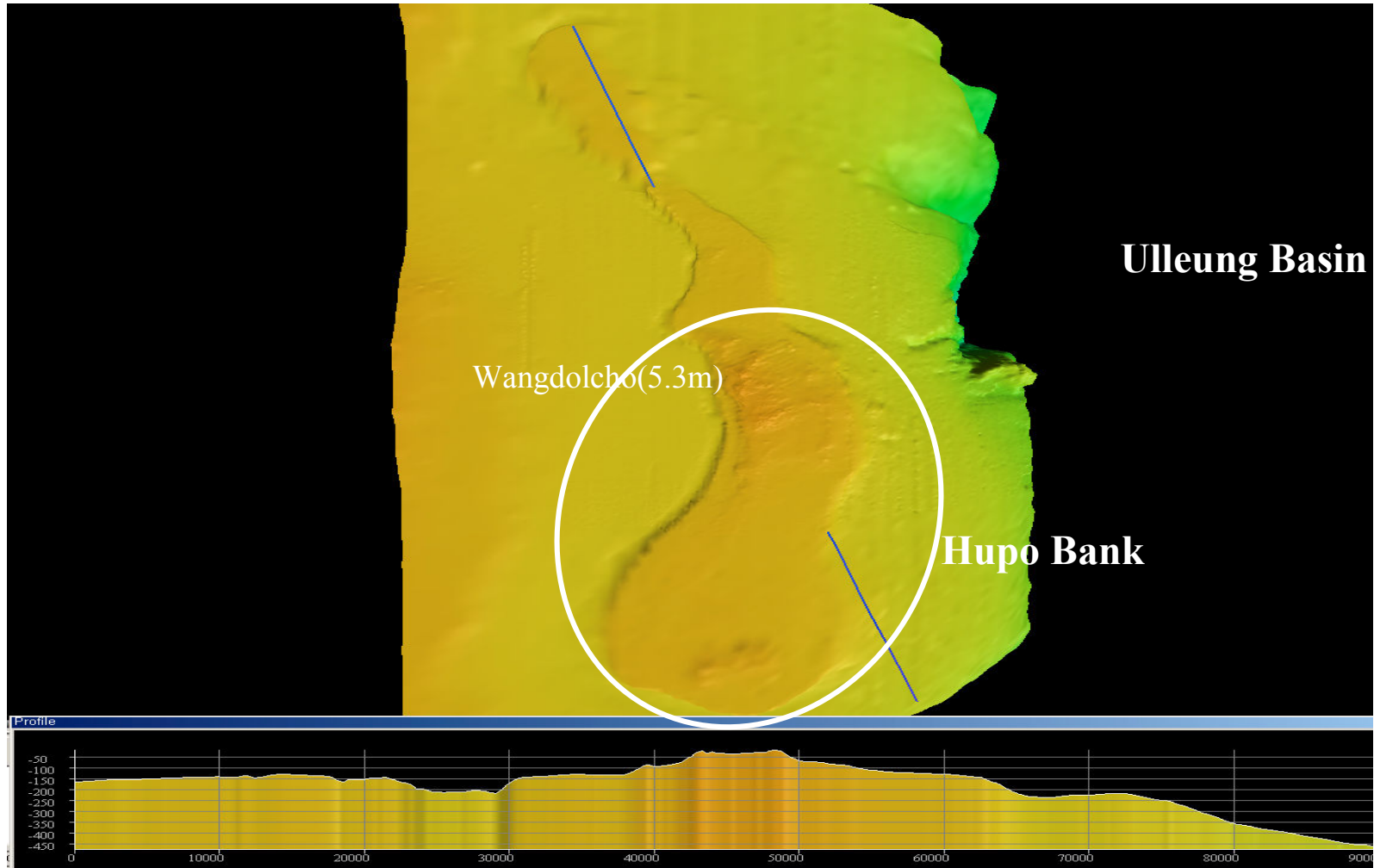


Image Map and Profile at the cross of Hupo Bank