

UNDERSEA FEATURE NAME PROPOSAL

Ocean or Sea: [East Sea](#)

Name Proposed: [Igyuwon Seamount](#)

Coordinates: A – of midpoint or summit: Lat. [37° 33'N](#) Long. [130° 27'E](#)
[30 kilometres in W direction from Ulleung Do \('Do' means island\)](#)

B – extremities (if linear feature):

Lat. [37° 25'N](#)

Lat. [37° 47'N](#)

Long. [130° 25'E](#)

to

Long. [130° 36'E](#)

Description (kind of feature): [Seamount](#)

Identifying or categorizing characteristics (shape, dimensions, total relief, least depth, steepness, etc.):

[The feature has an elongated shape in a SSW-NNE direction. It is 45 km long and 12 km wide with an irregular topographic relief at the summit. It may have been formed by a volcanic eruptions at different intervals. The minimum depth of this feature is 892 m. The base of this feature is defined by 1,600 m to 2,000 m depth contours. The relief of this feature is about 1,000 m.](#)

Associated features:

Chart reference:

Shown with name on chart [No. 102A \(scale 1:0.75 mln\), No. 138 \(1:0.5 mln\) and No. B4623\(Bathymatric chart, 1:0.5mln\) Published by Korea](#)

Shown but not named on chart No. _____

Not shown but within area covered by chart No. _____

Reason for choice of name (if a person, state how associated with the feature to be named):

['Igyuwon' Seamount is named after a famous Korean governor, I Gyu-Won \(1833~1901\) who supported navigation and commerce for the fishermen in Ulleung Do. \(Please refers to a separate sheet for more detailed information.\)](#)

Discovery facts:

Date: [Apr. ~ May. 1997](#) **by (ship):** [Haeyang 2000](#)

By means of (equipment): [Multi-Beam Echosounder \(SeaBeam 2100\)](#)

Navigation used: [DGPS \(Trimble DGPS 4000DS\)](#)

Estimated positional accuracy in nautical miles: [± 0.0027 miles](#)

Description of survey (track spacing, line crossings, grid network, etc.):

[The line spacing of survey tracks was less than 2 km in order to ensure 100 % coverage of our multi-beam system.](#)

Nature and repository of other survey activities (dredge samples, cores, magnetics, gravity, photographs, etc.):

[Gravity and magnetic surveys were also conducted.](#)

Supporting material (enclose, if possible, a sketch map of the survey area, profiles of the features, etc., with reference to prior publication, if any):

[See attached bathymetric maps, 3-D image maps, and survey track chart.](#)

Submitted by: [The Korea Committee on Marine Geographical Names, Republic of Korea](#)

Date: [June 08, 2007](#)

Address: [1-17, 7-ga Hang-dong, Jung-gu, Incheon, 400-800, Republic of Korea](#)

[Tel : +82 32 885 3825](#)

[Fax : +82 32 885 3088](#)

Concurred in by (if applicable):

National Authority (if any): [National Oceanographic Research Institute](#)

Address: [1-17, 7-ga Hang-dong, Jung-gu, Incheon, 400-800, Republic of Korea](#)

[Tel : +82 32 885 3825](#)

[Fax : +82 32 885 3088](#)

Note: this form should be forwarded, when completed:

a) If the undersea feature is located in territorial waters :-

to your "National Authority of Undersea Feature Names" or, if this does not exist or is not known, either to the International Hydrographic Bureau or to the Intergovernmental Oceanographic Commission (see addresses below) ;

b) If the undersea feature is located in international waters :-

to the International Hydrographic Bureau or to the Intergovernmental Oceanographic Commission, at the following addresses :

International Hydrographic Bureau
4, quai Antoine 1er
B.P. 445
MC 98011 MONACO CEDEX
Principality of MONACO
Fax: +377 93 10 81 40
E-mail: info@ihb.mc

Intergovernmental Oceanographic Commission
UNESCO
Place de Fontenoy
75700 PARIS
FRANCE
Fax: +33 1 45 68 58 12
E-mail: info@unesco.org

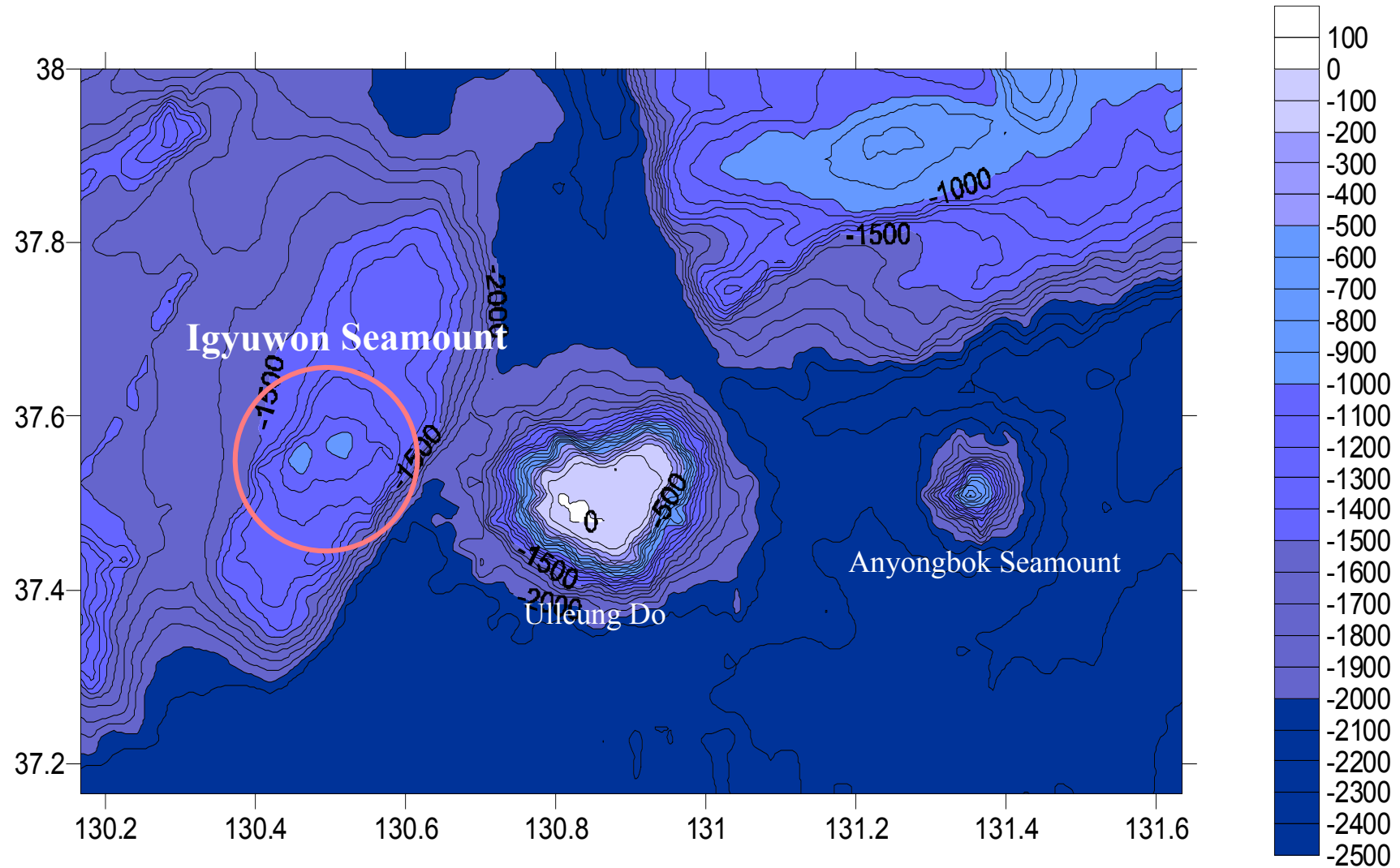
I Gyu-Won (1833~1901)

As a military officer during Chosun Dynasty, I Gyu-Won was dispatched to Ulleung Do in 1882 to conduct the detailed survey on the island including the residents and natural resources.

He asserted that an administrative plan needs to be established for developing the island in a report to the government, which was based on the survey results.

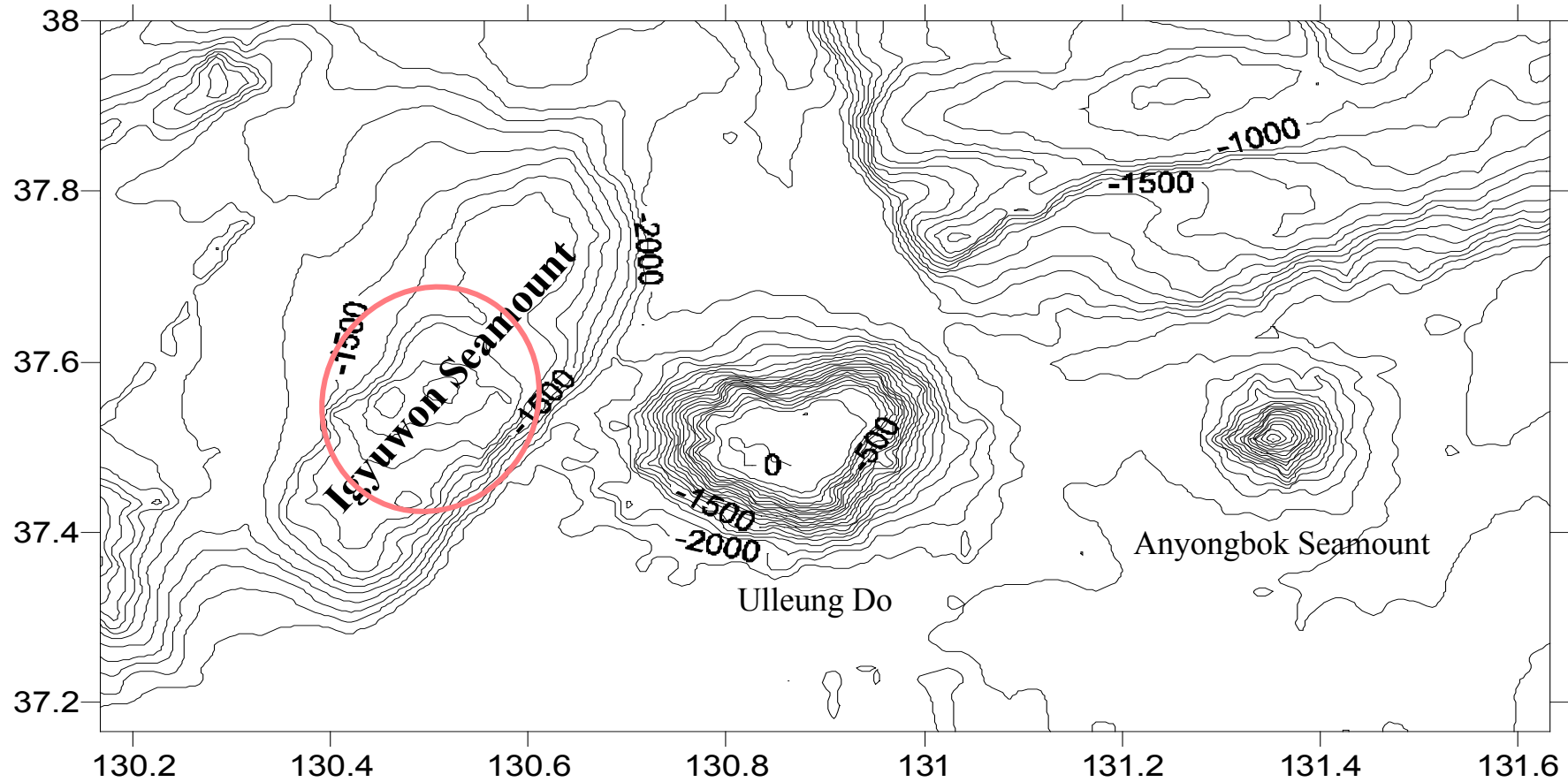
The government accepted his suggestion and withdrew a policy to evacuate the island, which had continued since the early 15th century. During his term of governing the island, the fishery activities and navigational skills were significantly enhanced.

Igyuwon Seamount



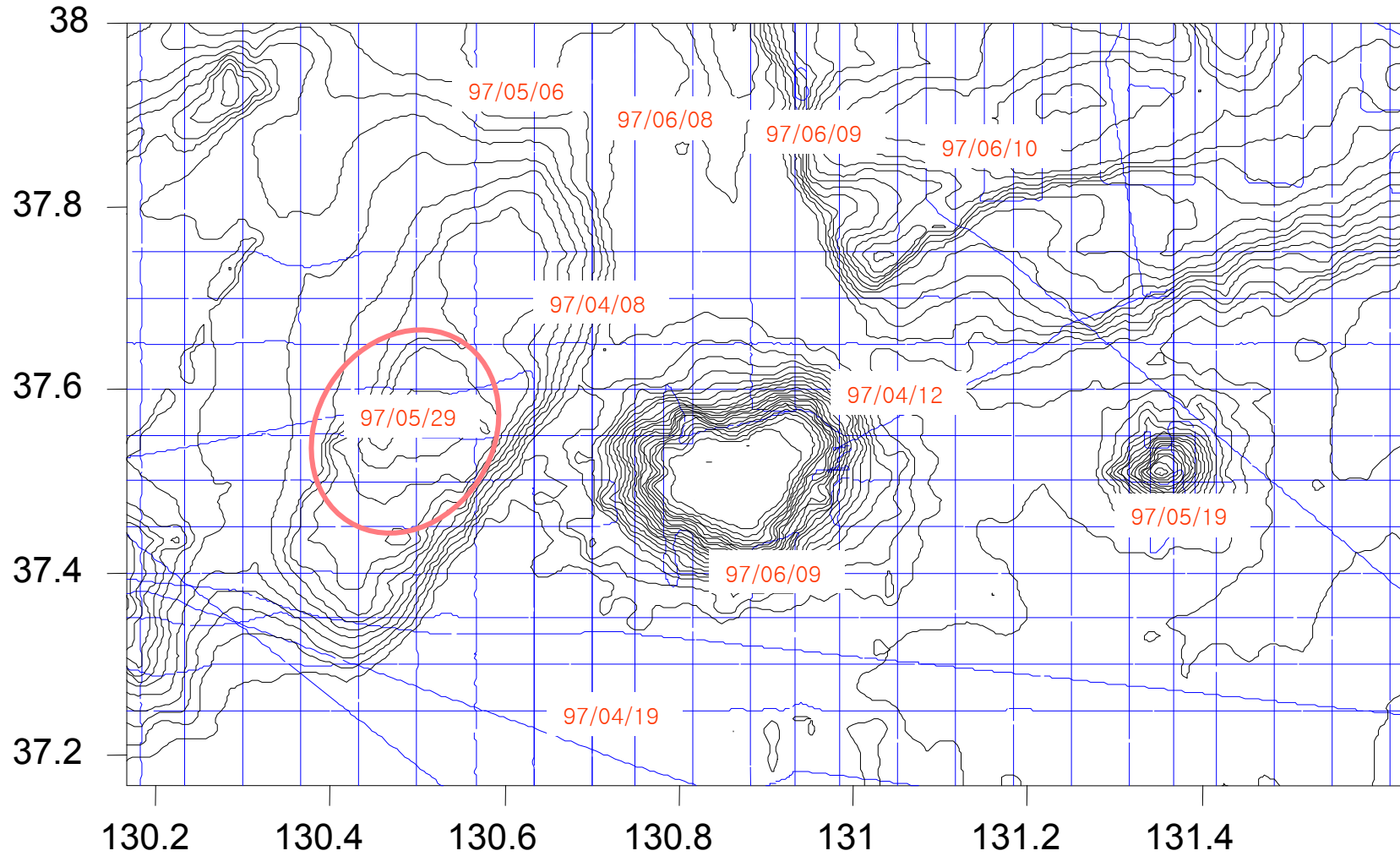
Bathymetric contour Map of Igyuwon Seamount (Contour interval : 100 m)

Igyuwon Seamount



Bathymetric contour Map of Igyuwon Seamount (Contour interval : 100 m)

Igyuwon Seamount



The track lines and date in survey area.

Igyuwon Seamount

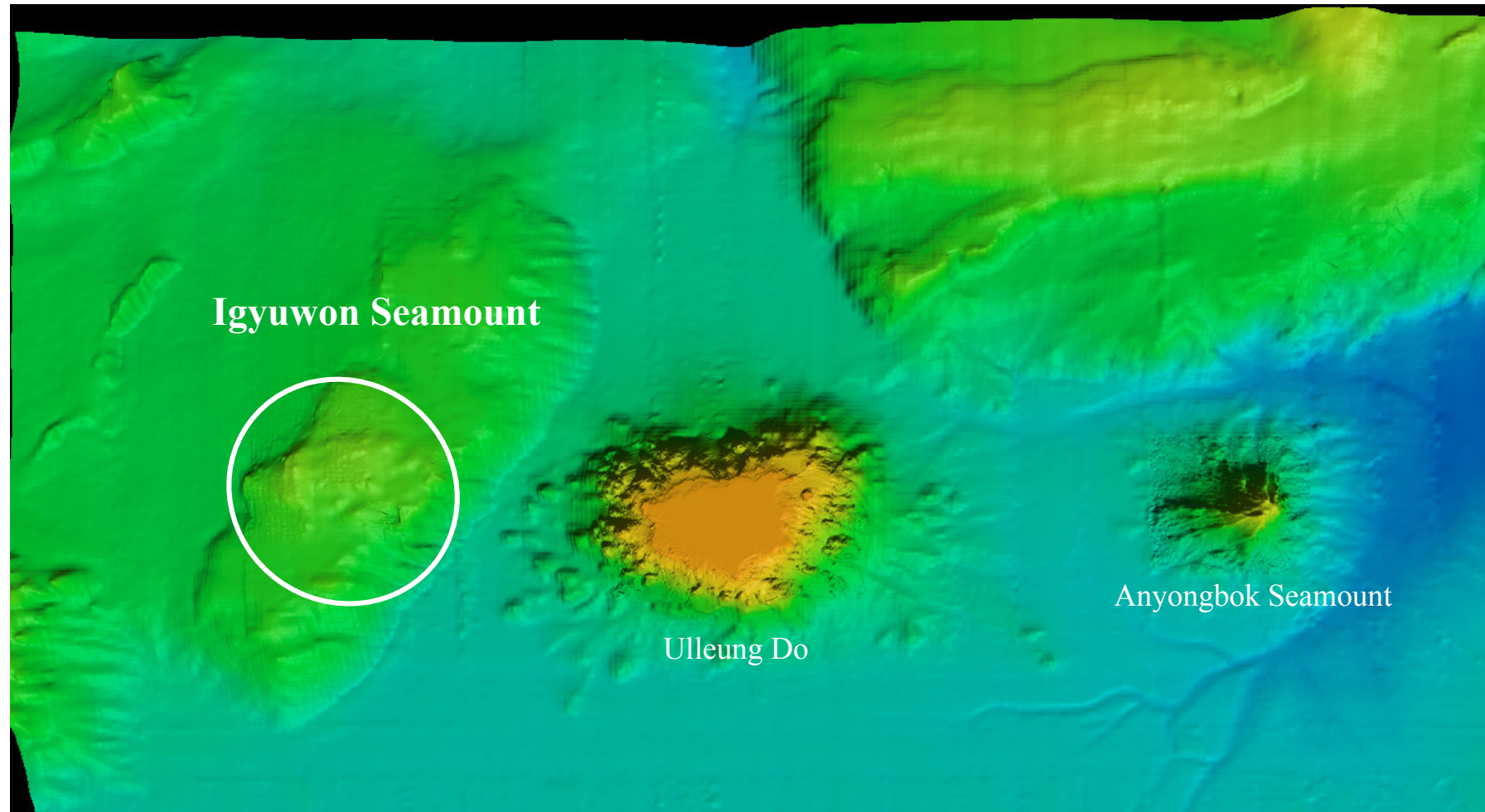


Image Map of Igyuwon Seamount

Igyuwon Seamount

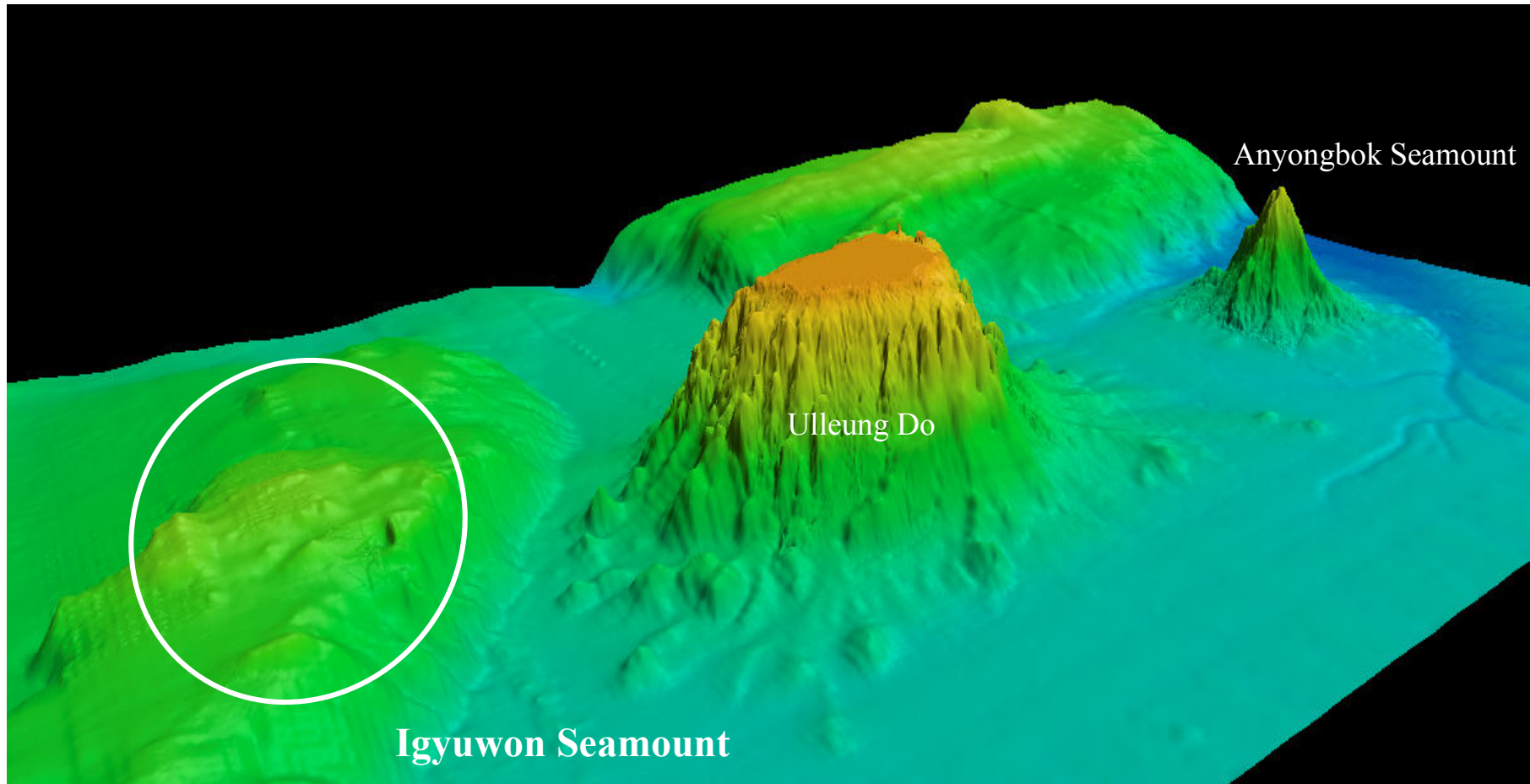


Image Map of Igyuwon Seamount

Igyuwon Seamount

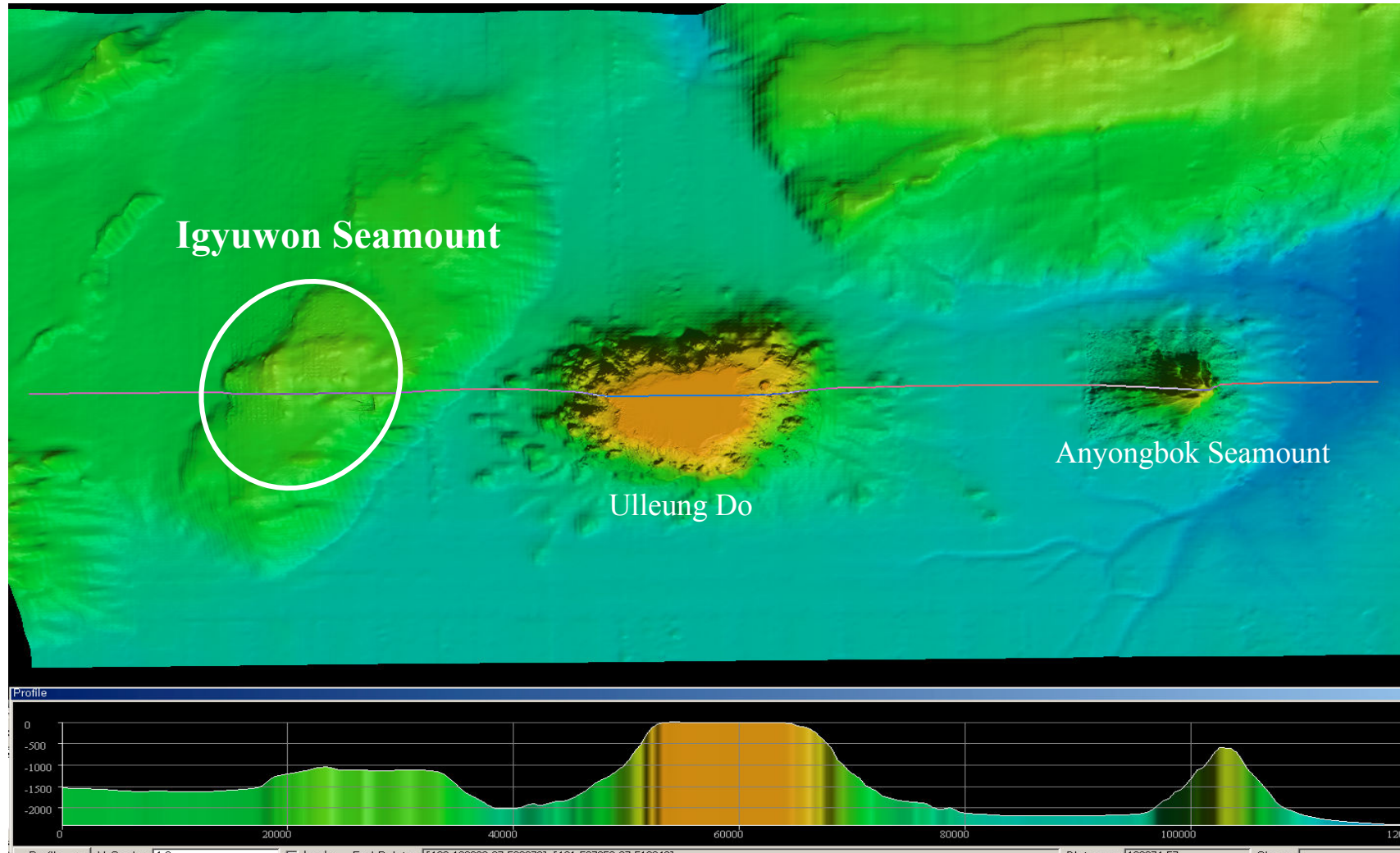


Image Map and Profile at the cross of Igyuwon Seamount