

UNDERSEA FEATURE NAME PROPOSAL

Ocean or Sea: [East Sea](#)

Name Proposed: [Kiminu Seamount](#)

Coordinates: A – of midpoint or summit: Lat. [37° 24'N](#) Long. [130° 08'E](#)  
[60](#) kilometres in [W](#) direction from [Ulleung Do \('Do' means island.\)](#)

B – extremities (if linear feature):

Lat:		to	Lat.
Long.			Long.

Description (kind of feature): [Seamount](#)

Identifying or categorizing characteristics (shape, dimensions, total relief, least depth, steepness, etc.):

[Kiminu Seamount is an elongated feature in a N-S direction with an irregular, oval shape in the plane view and a cone shape in the vertical view. The summit has irregular topographic relief and the minimum depth is 868 m. The bottom of this feature is defined by 1,600 m to 2,000 m depth contours.](#)

Associated features:

Chart reference:

Shown with name on chart [No. 102A \(scale 1:0.75 mln\), No. 138 \(1:0.5 mln\) and No. B4623\(Bathymetric chart, 1:0.5mln\) Published by Korea](#)

Shown but not named on chart No. \_\_\_\_\_

Not shown but within area covered by chart No. \_\_\_\_\_

Reason for choice of name (if a person, state how associated with the feature to be named):

['Kiminu' Seamount is named after a famous Korean navy general, Kim In-U who contributed to the safety of residents of Ulleung Do in the late 14<sup>th</sup> and early 15<sup>th</sup> centuries during the 'Chosun Dynasty'. \(Please refer to a separate sheet for more detailed information.\)](#)

**Discovery facts:**

**Date:** [Apr. ~ May. 1997](#) **by (ship):** [Haeyang 2000](#)

**By means of (equipment):** [Multi-Beam Echosounder \(SeaBeam 2100\)](#)

**Navigation used:** [DGPS \(Trimble DGPS 4000DS\)](#)

**Estimated positional accuracy in nautical miles:** [± 0.0027 miles](#)

**Description of survey** (track spacing, line crossings, grid network, etc.):

[The line spacing of survey tracks was less than 2 km in order to ensure 100 % coverage of our multi-beam system.](#)

**Nature and repository of other survey activities** (dredge samples, cores, magnetics, gravity, photographs, etc.):

[Gravity and magnetic surveys were also conducted.](#)

**Supporting material** (enclose, if possible, a sketch map of the survey area, profiles of the features, etc., with reference to prior publication, if any):

[See attached bathymetric maps, 3-D image maps, and survey track chart.](#)

**Submitted by:** [The Korea Committee on Marine Geographical Names, Republic of Korea](#)

**Date:** [June 08, 2007](#)

**Address:** [1-17, 7-ga Hang-dong, Jung-gu, Incheon, 400-800, Republic of Korea](#)

[Tel : +82 32 885 3825](#)

[Fax : +82 32 885 3088](#)

**Concurred in by** (if applicable):

**National Authority** (if any): [National Oceanographic Research Institute](#)

**Address:** [1-17, 7-ga Hang-dong, Jung-gu, Incheon, 400-800, Republic of Korea](#)

[Tel : +82 32 885 3825](#)

[Fax : +82 32 885 3088](#)

**Note:** this form should be forwarded, when completed:

**a) If the undersea feature is located in territorial waters :-**

to your "National Authority of Undersea Feature Names" or, if this does not exist or is not known, either to the International Hydrographic Bureau or to the Intergovernmental Oceanographic Commission (see addresses below) ;

**b) If the undersea feature is located in international waters :-**

to the International Hydrographic Bureau or to the Intergovernmental Oceanographic Commission, at the following addresses :

International Hydrographic Bureau  
4, quai Antoine 1er  
B.P. 445  
MC 98011 MONACO CEDEX  
Principality of MONACO  
Fax: +377 93 10 81 40  
E-mail: [info@ihb.mc](mailto:info@ihb.mc)

Intergovernmental Oceanographic Commission  
UNESCO  
Place de Fontenoy  
75700 PARIS  
FRANCE  
Fax: +33 1 45 68 58 12  
E-mail: [info@unesco.org](mailto:info@unesco.org)

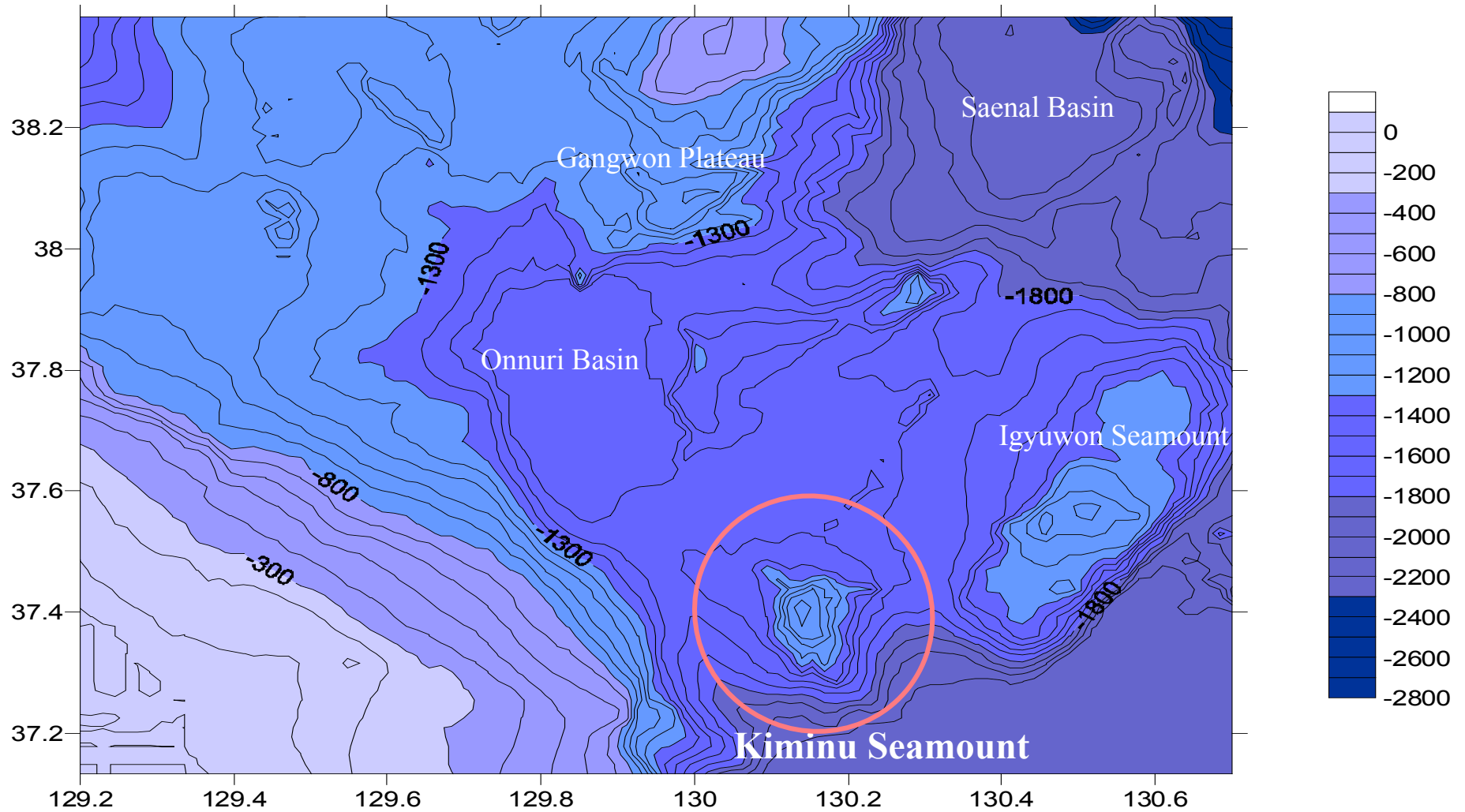
## **Kim In-U (1380~1440)**

Kim In-U was a renowned Korean navy general who lived from the late 14<sup>th</sup> century to the early 15<sup>th</sup> century.

Serving as a commander since 1416, he had implemented his tasks to safeguard the residents of Ulleung Do, an island located in the East Sea. Also, he dedicated himself to help the inhabitants to live in peace by expelling all the pirates from the island.

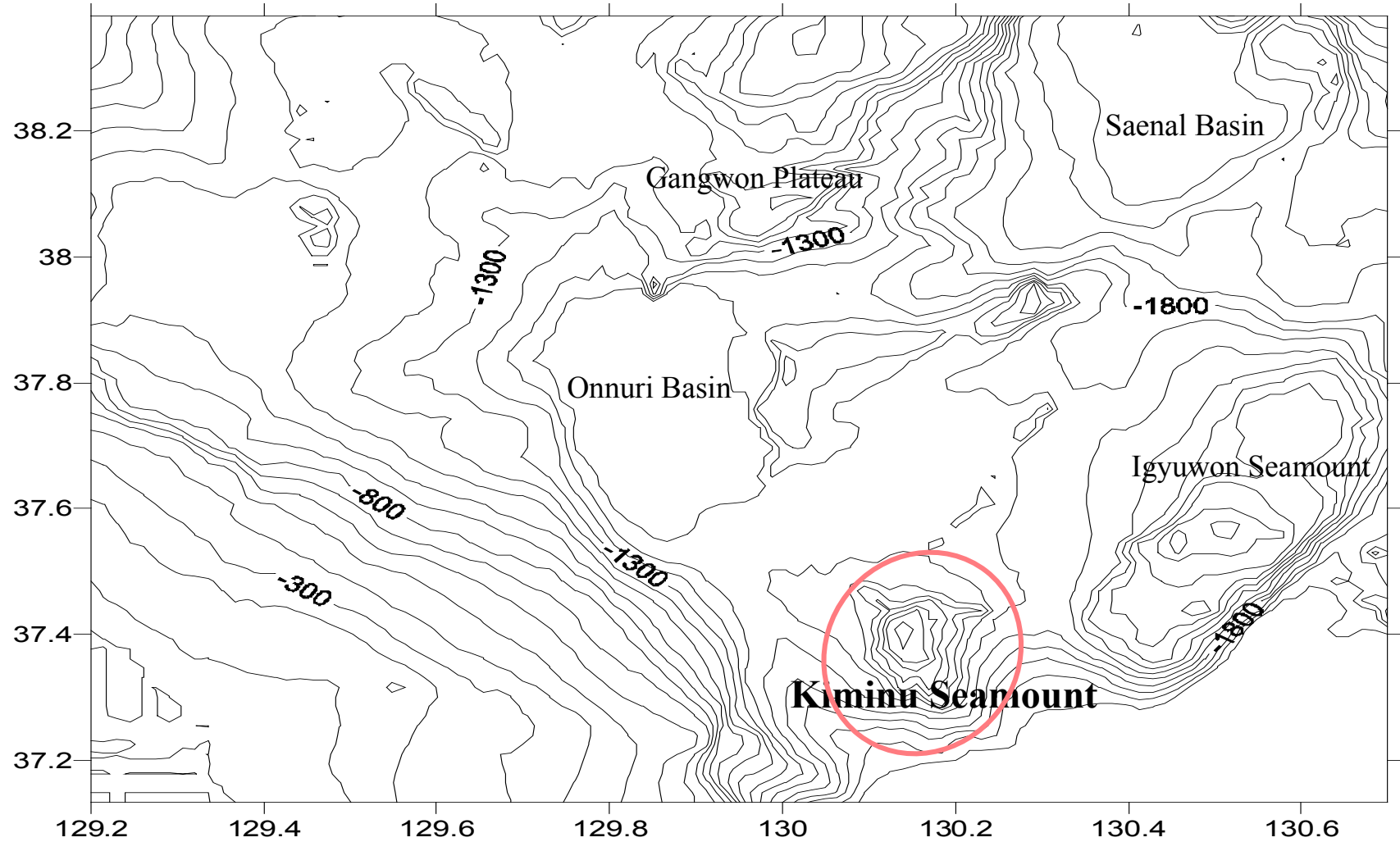
Furthermore, when the government decided to evacuate the island for the security reason, he devised a thorough policy to migrate the residents and successfully implemented the plan through safe navigation.

# Kiminu Seamount



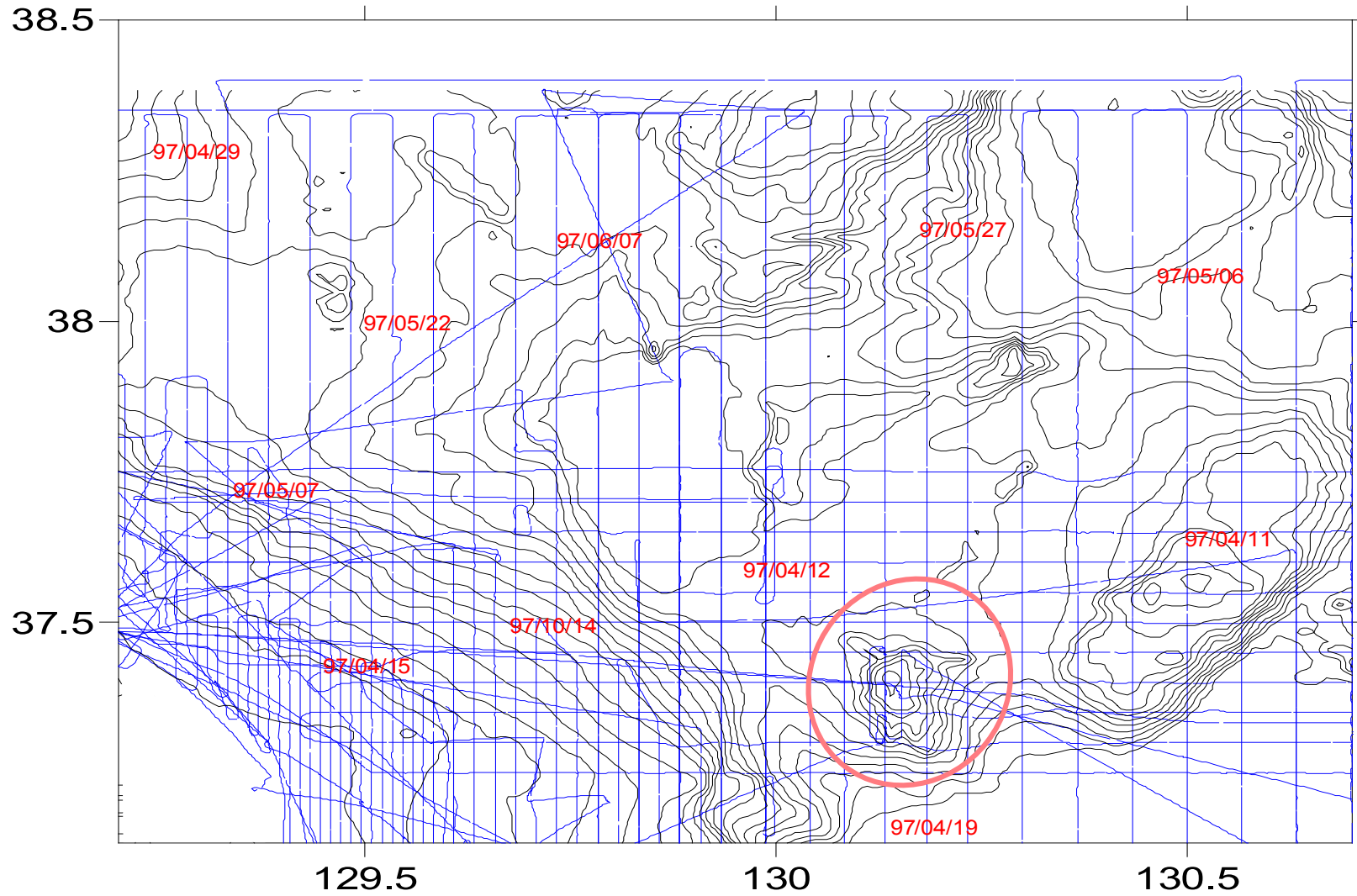
Bathymetric contour Map of Kiminu Seamount (Contour interval : 100 m)

# Kiminu Seamount



Bathymetric contour Map of Kiminu Seamount (Contour interval : 100 m)

# Kiminu Seamount



The track lines and date in survey area

# Kiminu Seamount

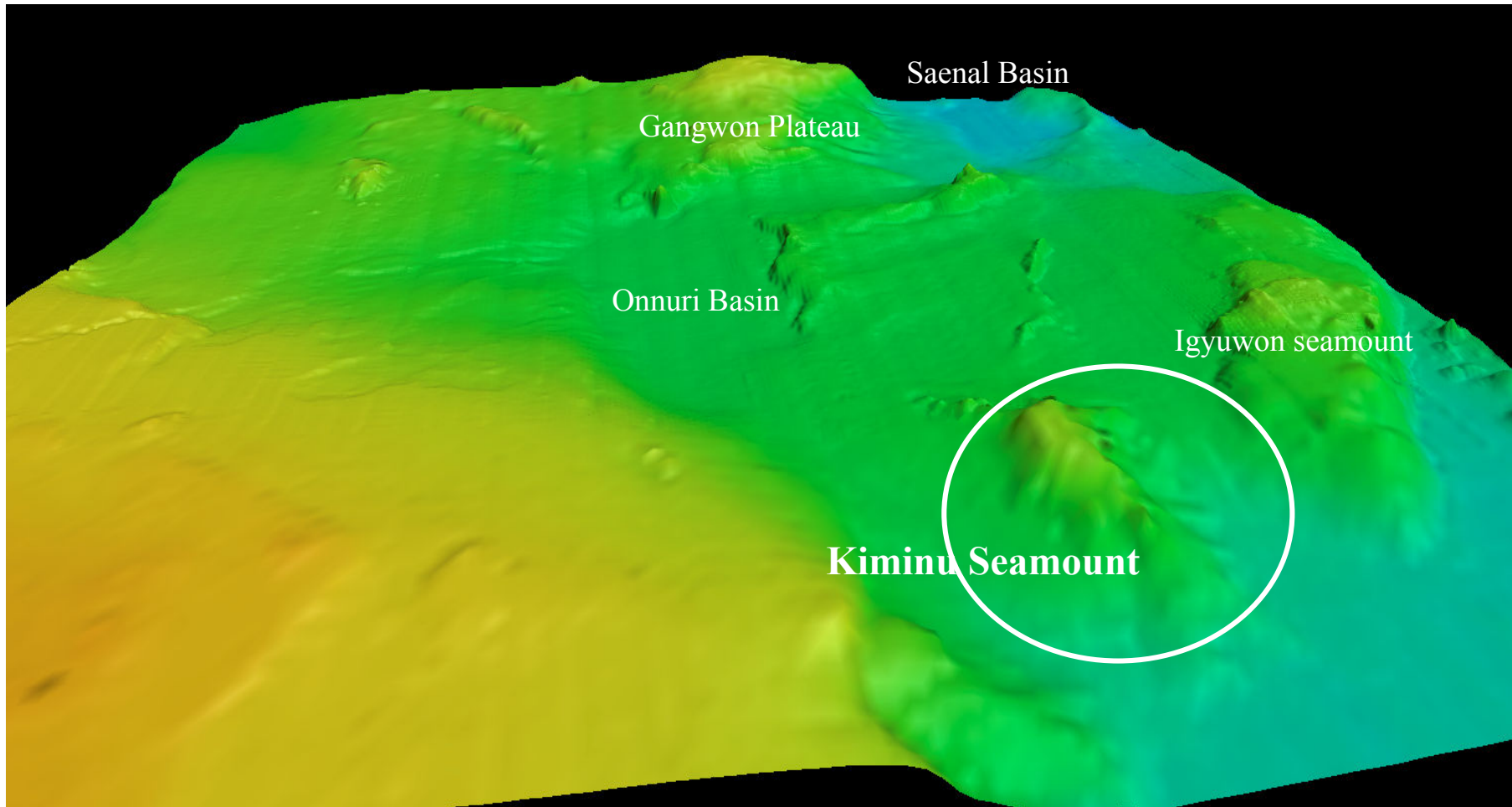


Image Map of Kiminu Seamount



# Kiminu Seamount

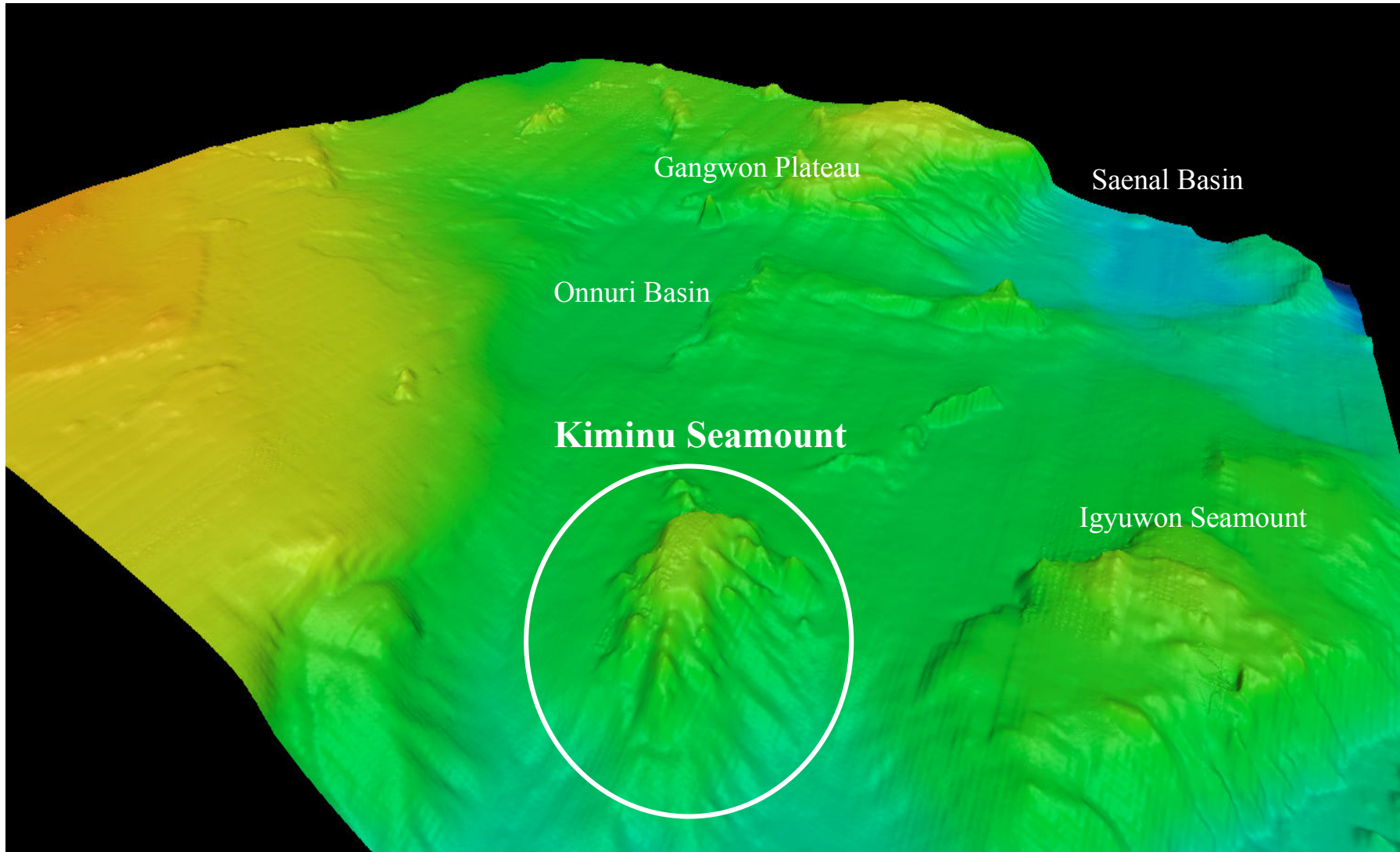


Image Map of Kiminu Seamount

# Kiminu Seamount

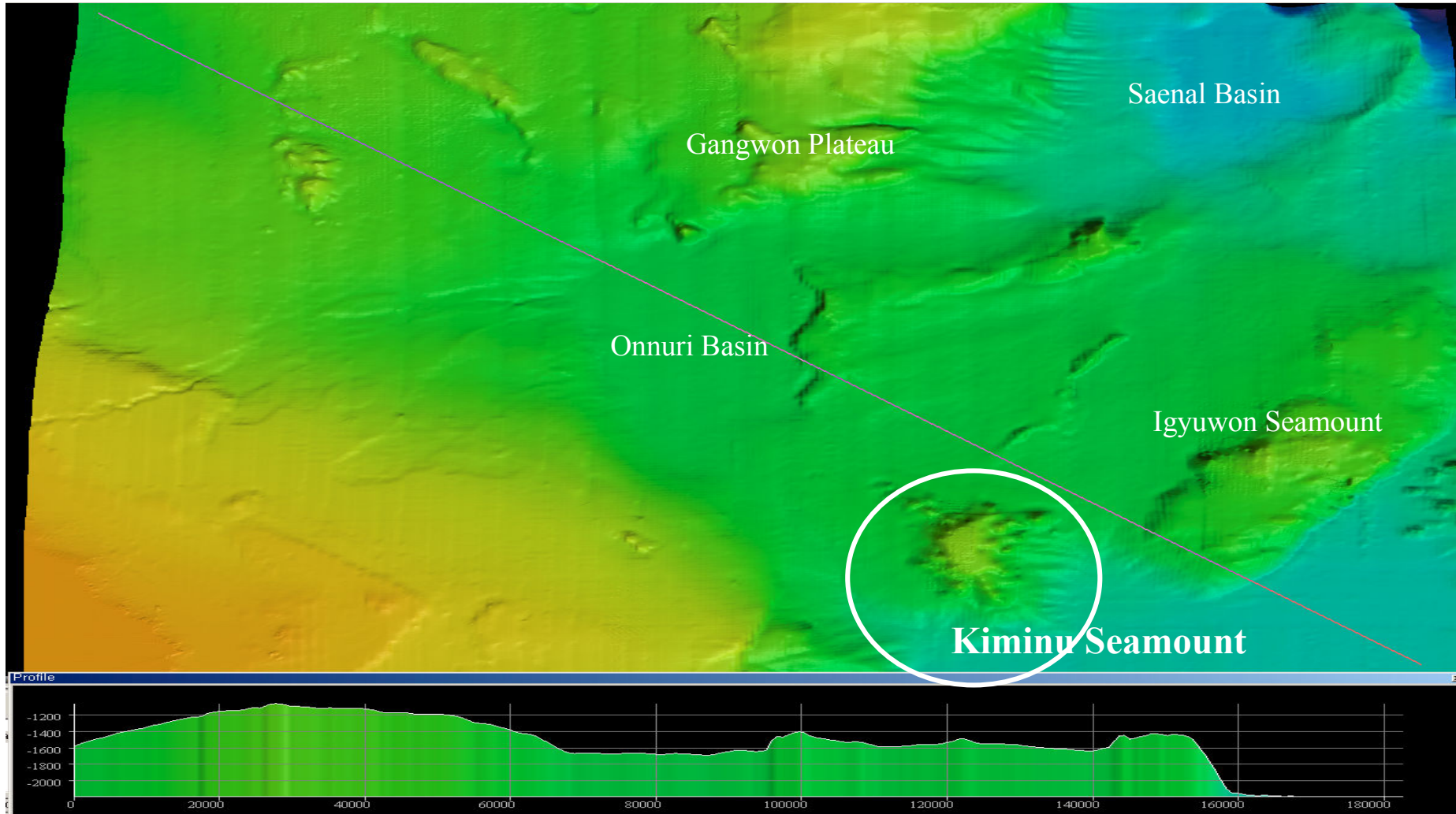


Image Map and Profile at the cross of Kiminu Seamount.