

UNDERSEA FEATURE NAME PROPOSAL

Ocean or Sea: [East Sea](#)

Name Proposed: [Ulleung Plateau](#)

Coordinates: A – of midpoint or summit: Lat. [38° 12'N](#) Long. [131° 26'E](#)
[90](#) kilometres in [NE](#) direction from [Ulleung Do](#) ('Do' means island)

B – extremities (if linear feature):

Lat. [38° 12'N](#)

Lat. [38° 10'N](#)

Long. [130° 49'E](#)

to

Long. [132° 10'E](#)

Description (kind of feature): [Plateau](#)

Identifying or categorizing characteristics (shape, dimensions, total relief, least depth, steepness, etc.):

[Ulleung Plateau is the eastern part of the Korea Plateau. Ulleung Plateau is about 95 km from south to north, and about 115 km from east to west.](#)

Associated features:

Chart reference:

Shown with name on chart [No. 102A](#) (scale 1:0.75 mln), [No. 138](#) (1:0.5 mln) and
[No. B4623](#)(Bathymetric chart, 1:0.5mln) published by Korea

Shown but not named on chart No. _____

Not shown but within area covered by chart No. _____

Reason for choice of name (if a person, state how associated with the feature to be named):

['Ulleung' is the name of the island nearest to this feature.](#)

Discovery facts:

Date: [Apr. ~ Jun. 1997](#) by (ship): [Haeyang 2000](#)

By means of (equipment): [Multi-Beam Echosounder \(SeaBeam 2100\)](#)

Navigation used: [DGPS \(Trimble DGPS 4000DS\)](#)

Estimated positional accuracy in nautical miles: [± 0.0027 miles](#)

Description of survey (track spacing, line crossings, grid network, etc.):

[The line spacing of survey tracks was less than 2 km in order to ensure 100 % coverage of the multi-beam system.](#)

Nature and repository of other survey activities (dredge samples, cores, magnetics, gravity, photographs, etc.):

[Gravity and magnetic surveys were also conducted.](#)

Supporting material (enclose, if possible, a sketch map of the survey area, profiles of the features, etc., with reference to prior publication, if any):

[See attached bathymetric maps, 3-D image maps, and survey track chart.](#)

Submitted by: The Korea Committee on Marine Geographical Names, Republic of Korea

Date: June 08, 2007

Address: 1-17, 7-ga Hang-dong, Jung-gu, Incheon, 400-800, Republic of Korea

Tel : +82 32 885 3825

Fax : +82 32 885 3088

Concurred in by (if applicable):

National Authority (if any): National Oceanographic Research Institute

Address: 1-17, 7-ga Hang-dong, Jung-gu, Incheon, 400-800, Republic of Korea

Tel : +82 32 885 3825

Fax : +82 32 885 3088

Note: this form should be forwarded, when completed:

a) If the undersea feature is located in territorial waters :-

to your "National Authority of Undersea Feature Names" or, if this does not exist or is not known, either to the International Hydrographic Bureau or to the Intergovernmental Oceanographic Commission (see addresses below) ;

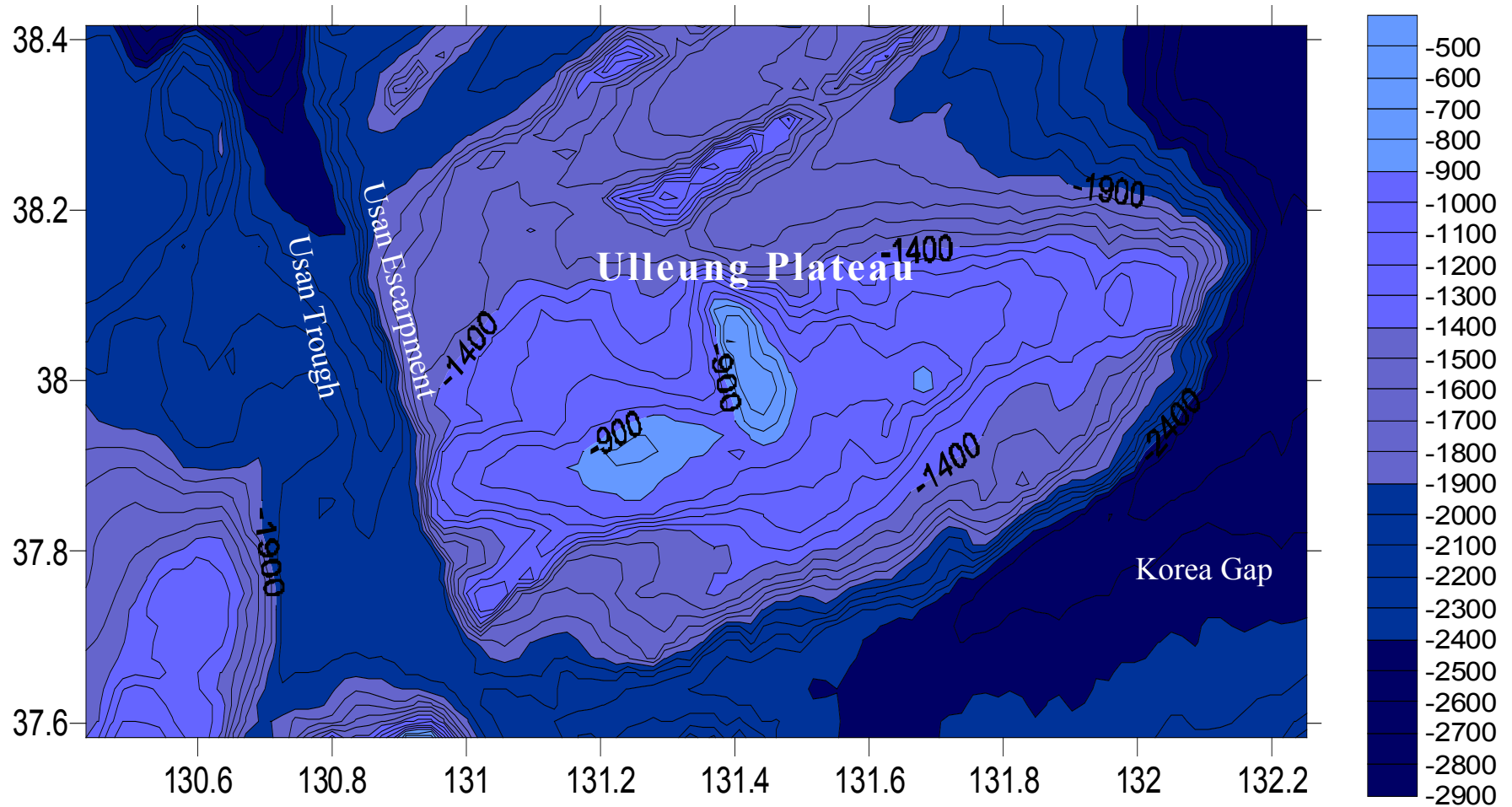
b) If the undersea feature is located in international waters :-

to the International Hydrographic Bureau or to the Intergovernmental Oceanographic Commission, at the following addresses :

International Hydrographic Bureau
4, quai Antoine 1er
B.P. 445
MC 98011 MONACO CEDEX
Principality of MONACO
Fax: +377 93 10 81 40
E-mail: info@ihb.mc

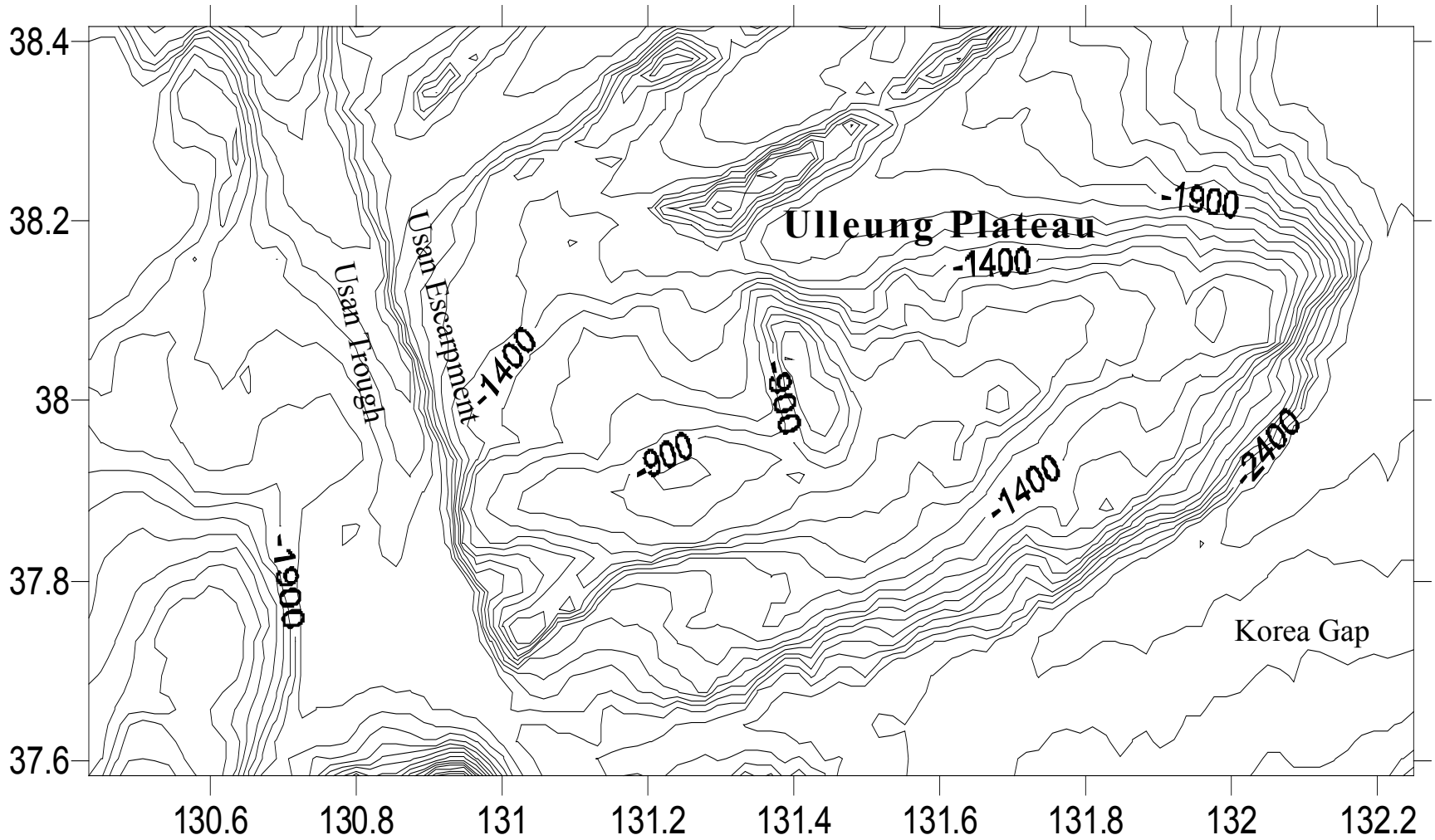
Intergovernmental Oceanographic Commission
UNESCO
Place de Fontenoy
75700 PARIS
FRANCE
Fax: +33 1 45 68 58 12
E-mail: info@unesco.org

Ulleung Plateau



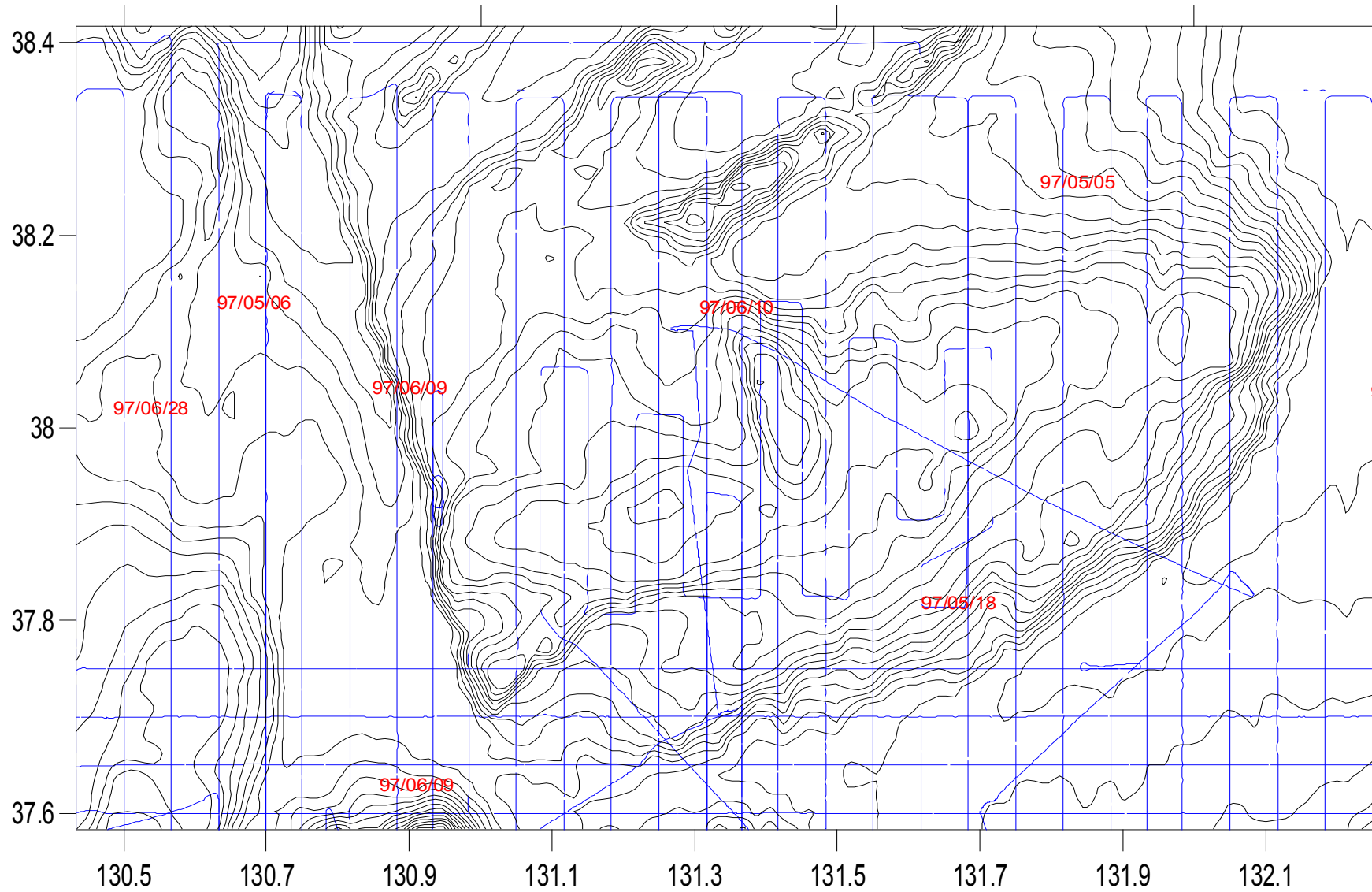
Bathymetric contour Map of Ulleung Plateau(Contour interval : 100 m)

Ulleung Plateau



Bathymetric contour Map of Ulleung Plateau (Contour interval : 100 m)

Ulleung Plateau



The track lines and date in survey area

Ulleung Plateau

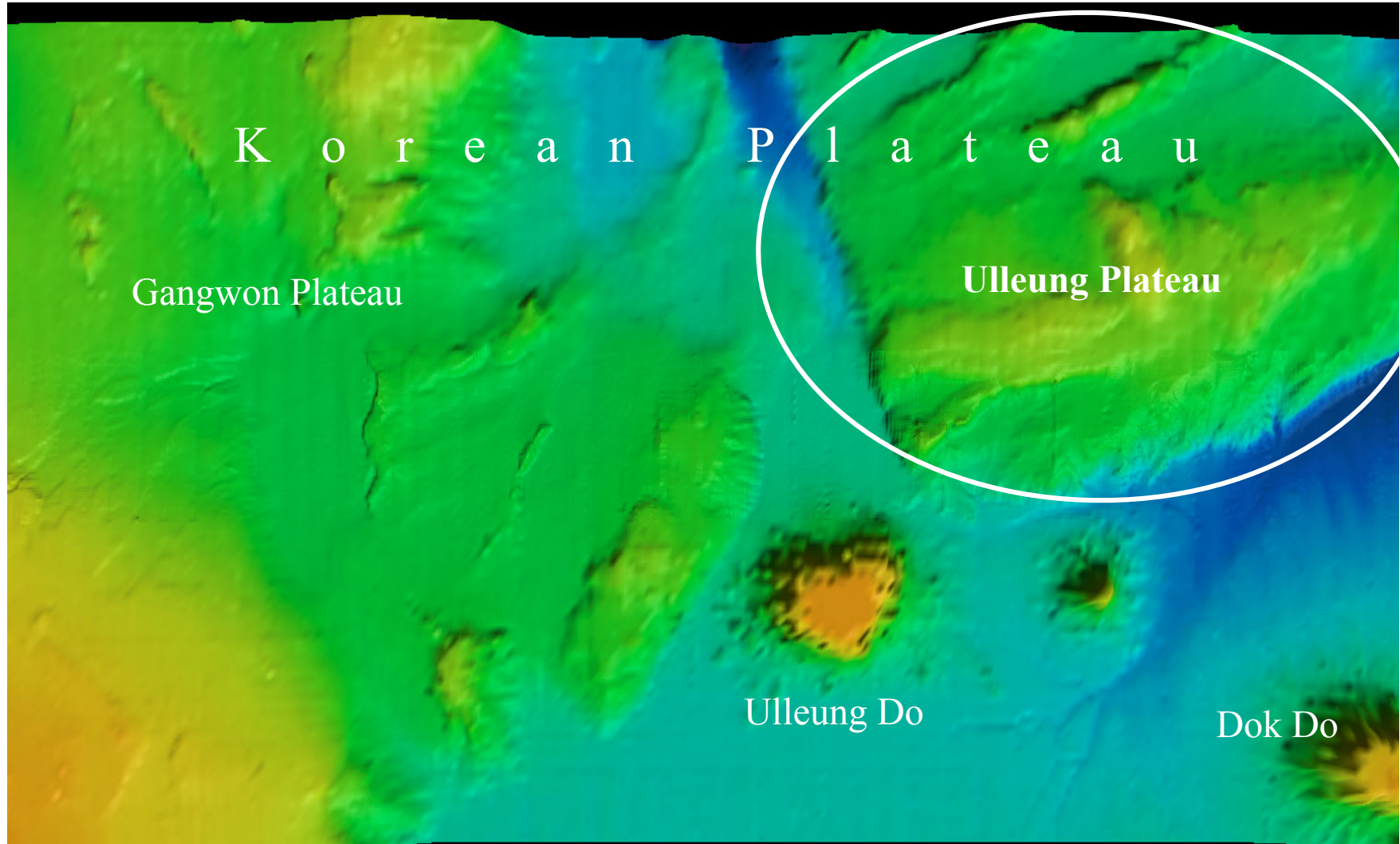


Image Map of Ulleung Plateau

Ulleung Plateau

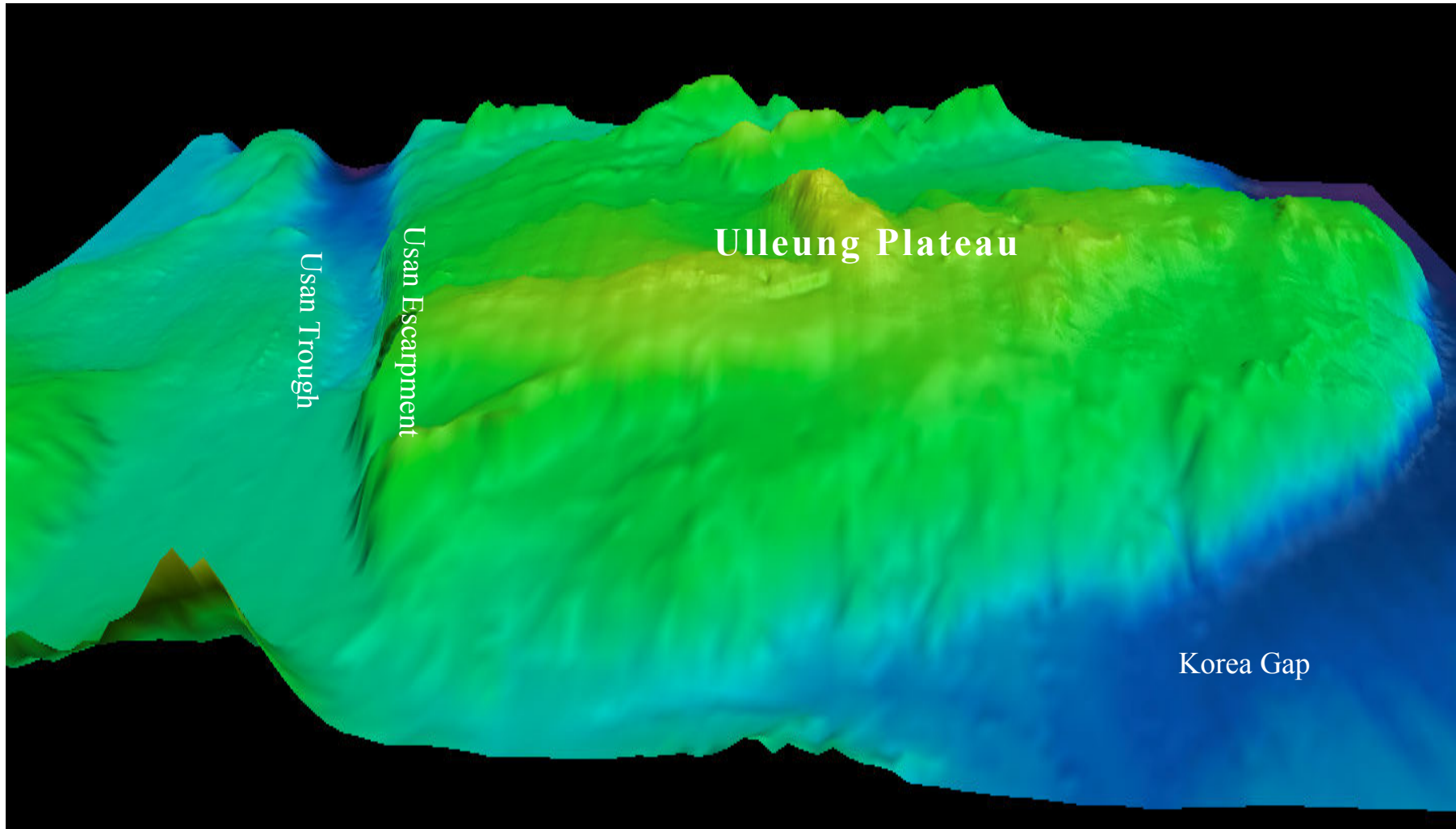


Image Map of Ulleung Plateau

Ulleung Plateau

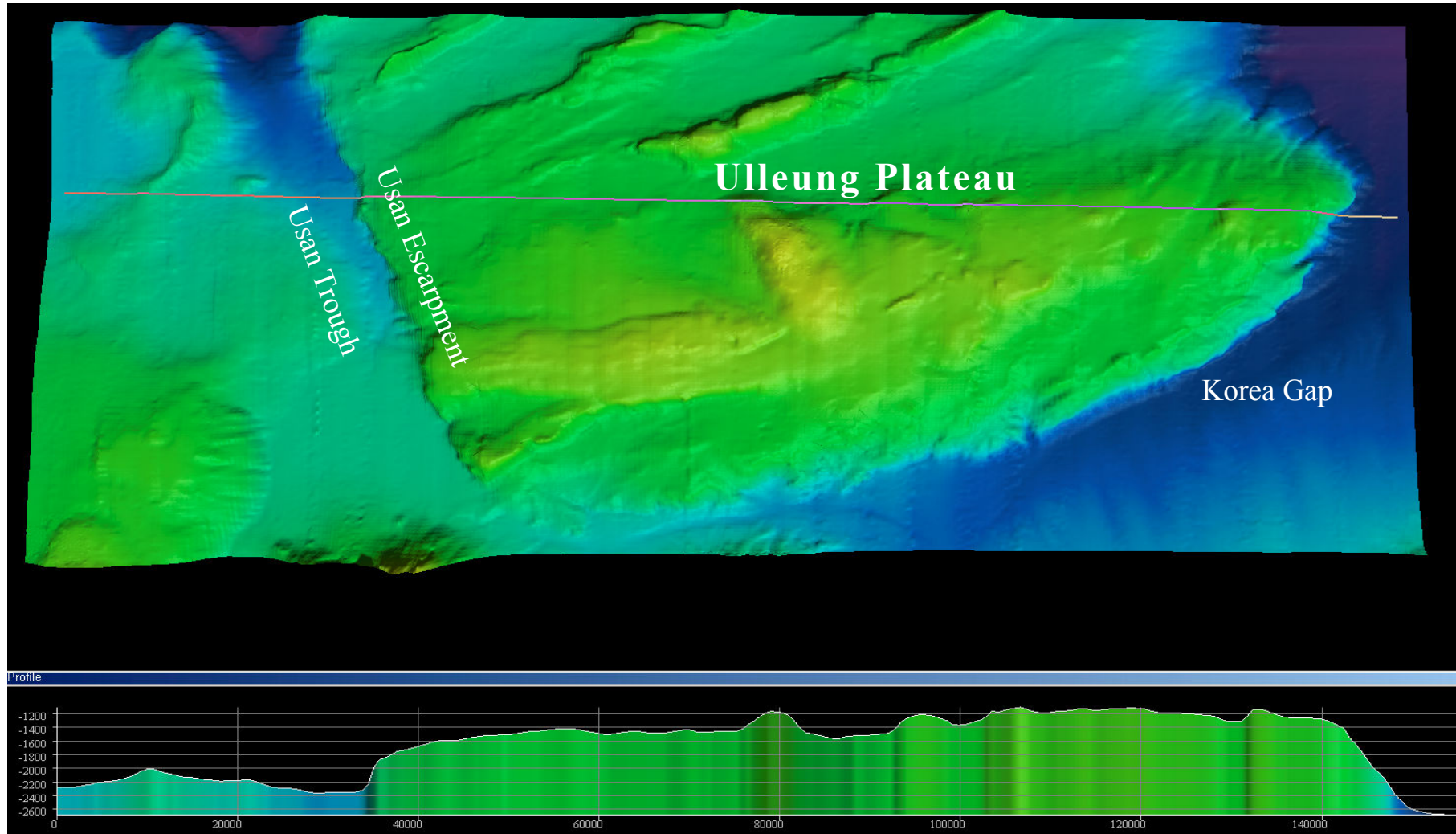


Image Map and Profile at the cross of Ulleung Plateau