

UNDERSEA FEATURE NAME PROPOSAL

Ocean or Sea: [East Sea](#)

Name Proposed: [Usan Escarpment](#)

Coordinates: A – of midpoint or summit: Lat. [38° 08'N](#) Long. [130° 51'E](#)
[60 kilometres in N direction from Ulleung Do \('Do' means island\)](#)

B – extremities (if linear feature):

Lat. [37° 41'N](#)

Lat. [38° 30'N](#)

Long. [131° 00'E](#)

to

Long. [130° 45'E](#)

Description (kind of feature): [Escarpment](#)

Identifying or categorizing characteristics (shape, dimensions, total relief, least depth, steepness, etc.):

[Usan Escarpment is an elongated feature with a steep slope located on the western edge of Ulleung Plateau. This feature occurs between the 1,500 to 2,000 m depth contours. The total relief of this feature is about 500 m, and its length is about 95 km.](#)

Associated features:

Chart reference:

Shown with name on chart [No. 102A \(scale 1:0.75 mln\), No. 138 \(1:0.5 mln\) and No. B4623\(Bathymatric chart, 1:0.5mln\) Published by Korea](#)

Shown but not named on chart No. _____

Not shown but within area covered by chart No. _____

Reason for choice of name (if a person, state how associated with the feature to be named):

[The name 'Usan' is originated from the name of an ancient country founded in Ulleung Do before the 5th century. Usan is the ancient name of Ulleung-do prior to the 5th century AD.](#)

Discovery facts:

Date: [Apr. ~ Jun. 1997](#) **by** (individuals or ship): [Haeyang 2000](#)

By means of (equipment): [Multi-Beam Echosounder \(SeaBeam 2100\)](#)

Navigation used: [DGPS \(Trimble DGPS 4000DS\)](#)

Estimated positional accuracy in nautical miles: [± 0.0027 miles](#)

Description of survey (track spacing, line crossings, grid network, etc.):

[The line spacing of survey tracks was less than 2 km in order to ensure 100 % coverage of our multi-beam system.](#)

Nature and repository of other survey activities (dredge samples, cores, magnetics, gravity, photographs, etc.):

[Gravity and magnetic surveys were also conducted.](#)

Supporting material (enclose, if possible, a sketch map of the survey area, profiles of the features, etc., with reference to prior publication, if any):

[See attached bathymetric maps, 3-D image maps, and survey track chart.](#)

Submitted by: [The Korea Committee on Marine Geographical Names, Republic of Korea](#)

Date: [June 08, 2007](#)

Address: [1-17, 7-ga Hang-dong, Jung-gu, Incheon, 400-800, Republic of Korea](#)

[Tel : +82 32 885 3825](#)

[Fax : +82 32 885 3088](#)

Concurred in by (if applicable):

National Authority (if any): [National Oceanographic Research Institute](#)

Address: [1-17, 7-ga Hang-dong, Jung-gu, Incheon, 400-800, Republic of Korea](#)

[Tel : +82 32 885 3825](#)

[Fax : +82 32 885 3088](#)

Note: this form should be forwarded, when completed:

a) If the undersea feature is located in territorial waters :-

to your "National Authority of Undersea Feature Names" or, if this does not exist or is not known, either to the International Hydrographic Bureau or to the Intergovernmental Oceanographic Commission (see addresses below) ;

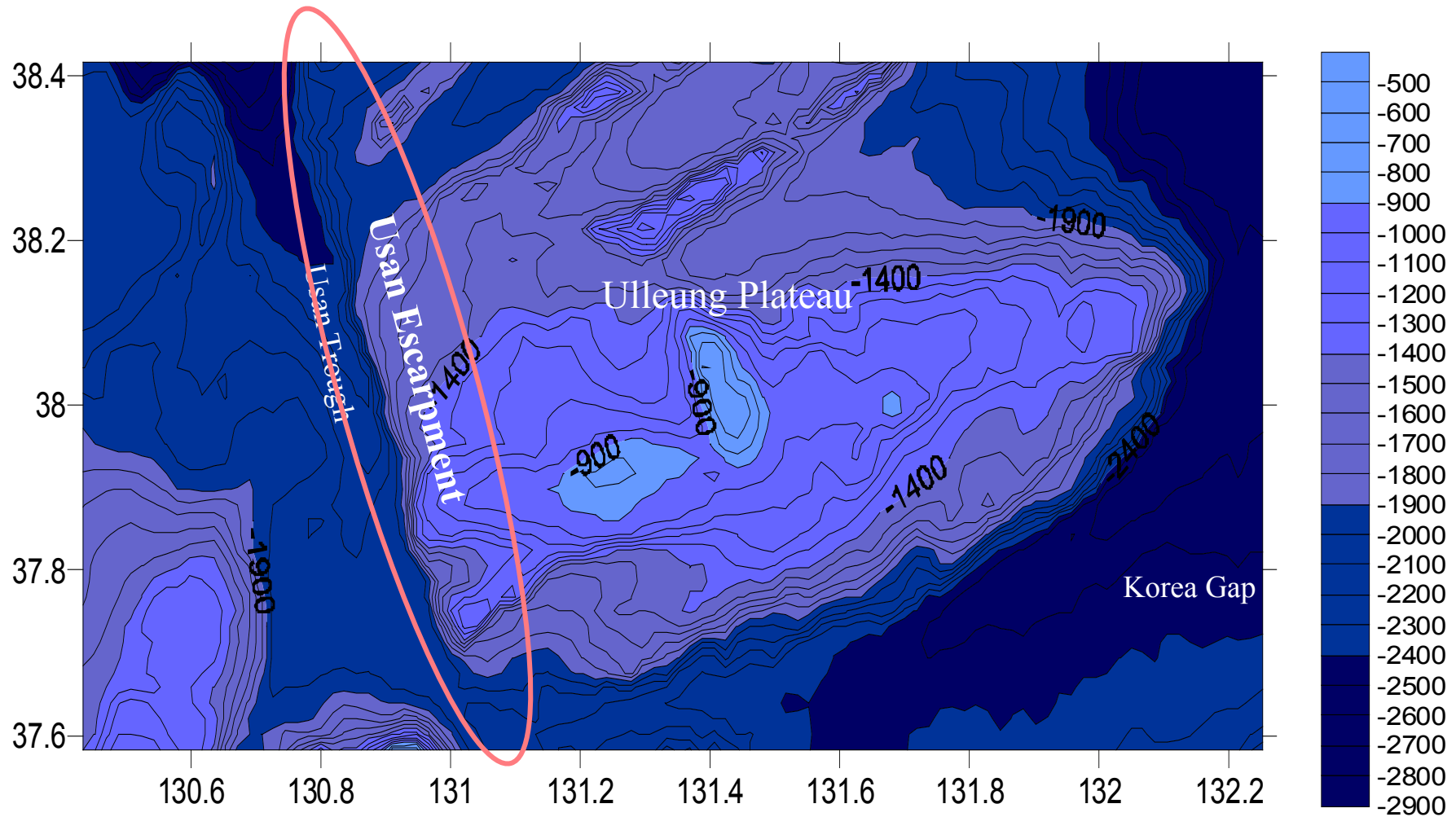
b) If the undersea feature is located in international waters :-

to the International Hydrographic Bureau or to the Intergovernmental Oceanographic Commission, at the following addresses :

International Hydrographic Bureau
4, quai Antoine 1er
B.P. 445
MC 98011 MONACO CEDEX
Principality of MONACO
Fax: +377 93 10 81 40
E-mail: info@ihb.mc

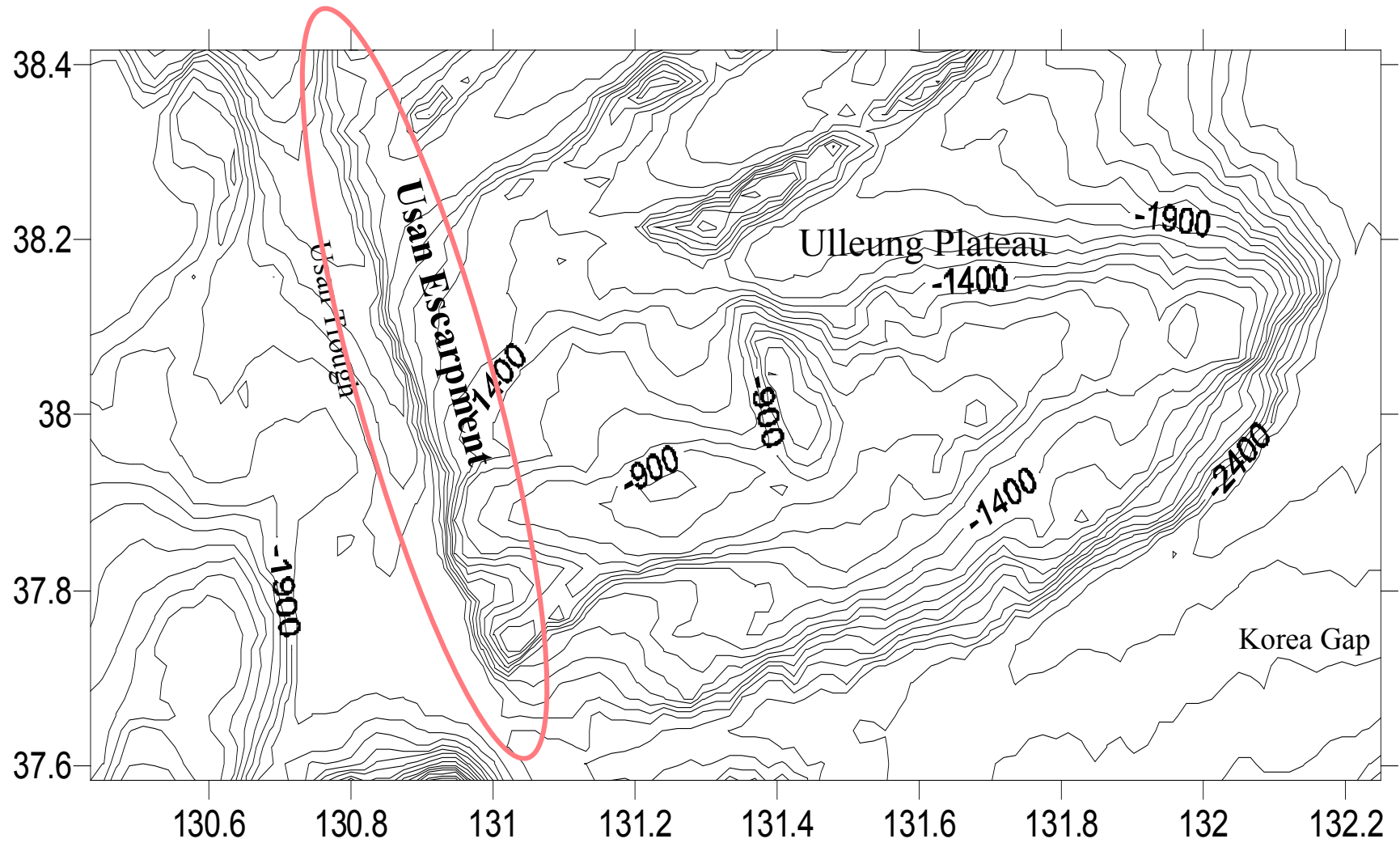
Intergovernmental Oceanographic Commission
UNESCO
Place de Fontenoy
75700 PARIS
FRANCE
Fax: +33 1 45 68 58 12
E-mail: info@unesco.org

Usan Escarpment



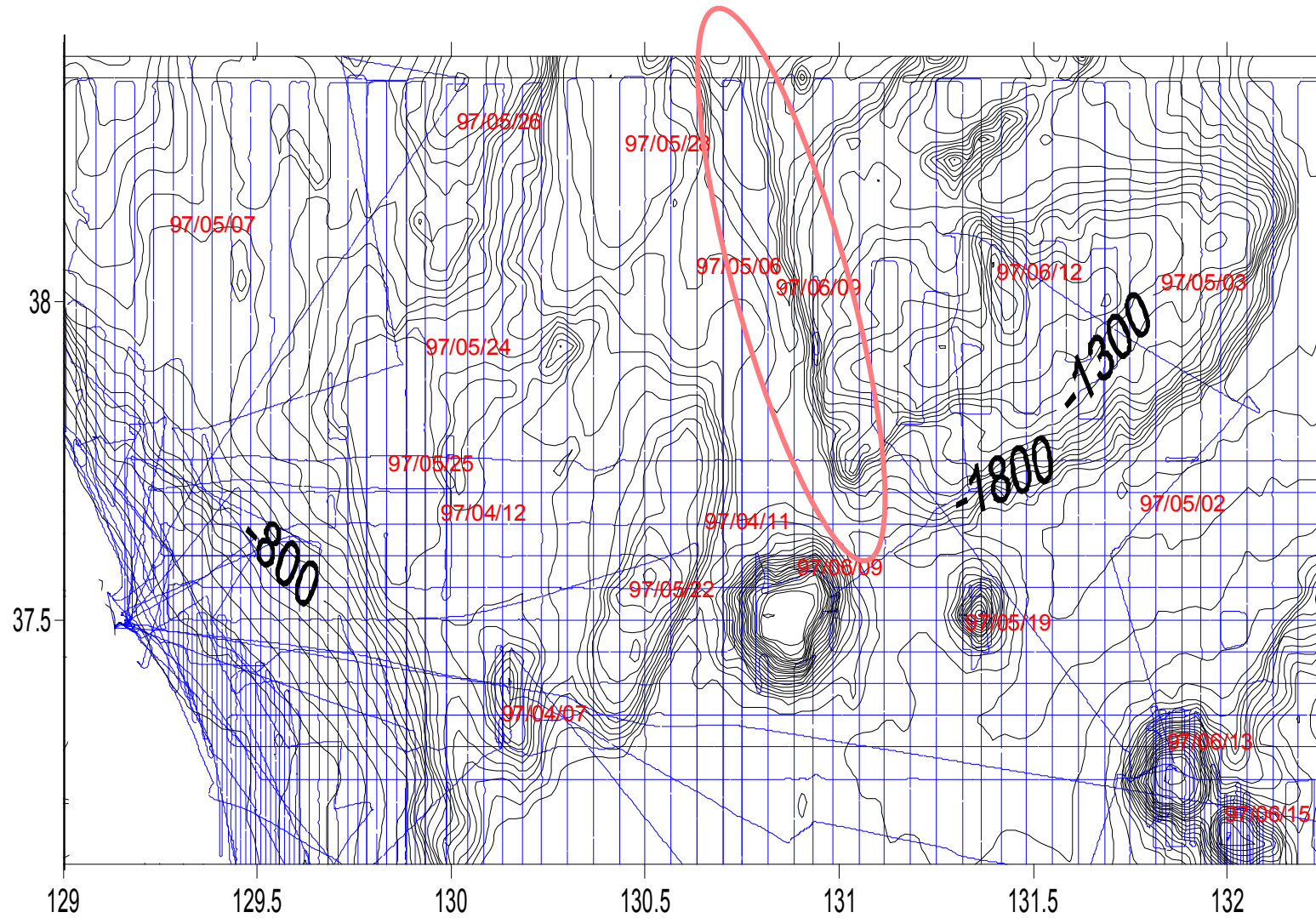
Bathymetric contour Map of Usan Escarpment (Contour interval : 100 m)

Usan Escarpment



Bathymetric contour Map of Usan Escarpment (Contour interval : 100 m)

Usan Escarpment



The track lines and date in survey area

Usan Escarpment

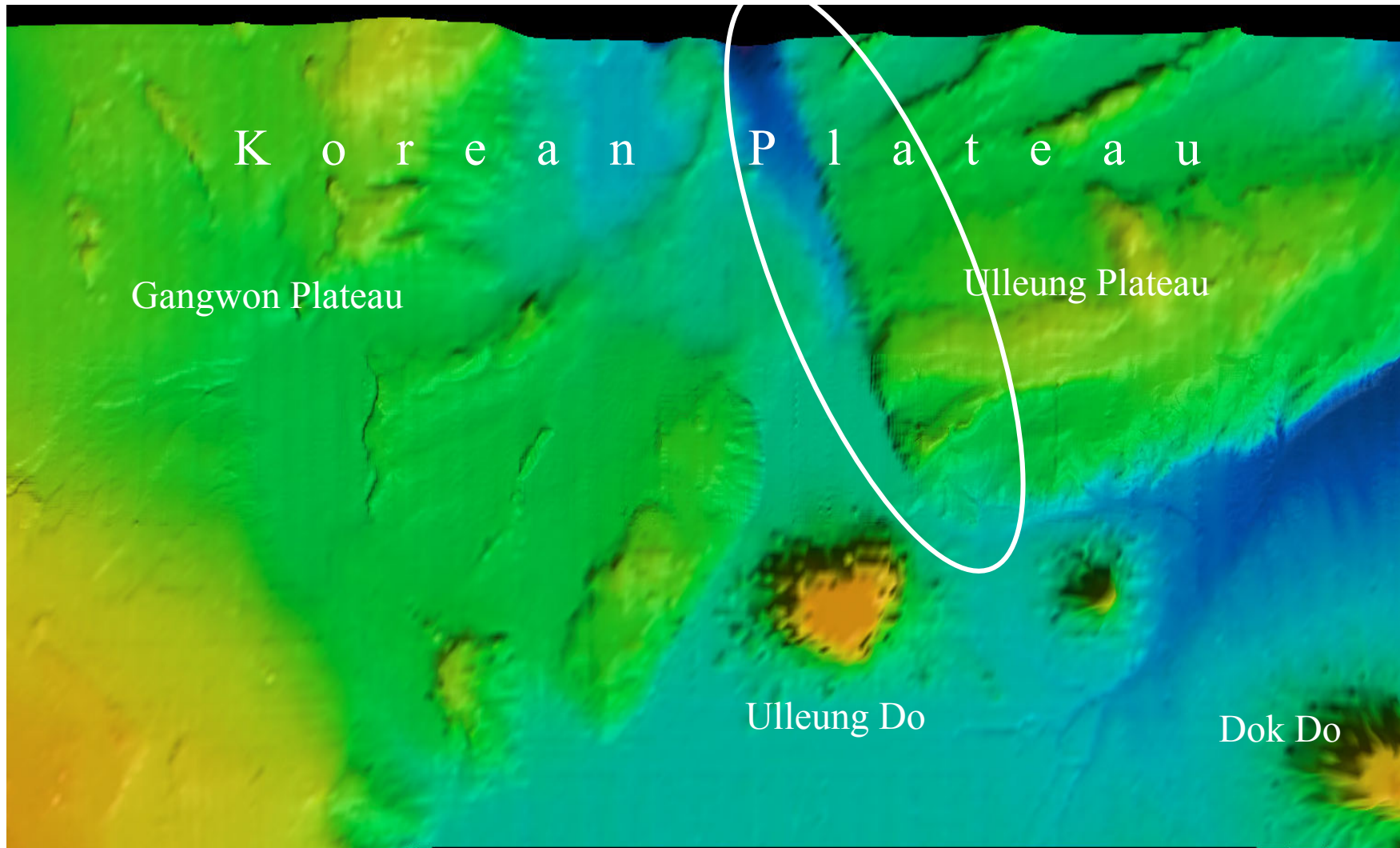


Image Map of Usan Escarpment

Usan Escarpment

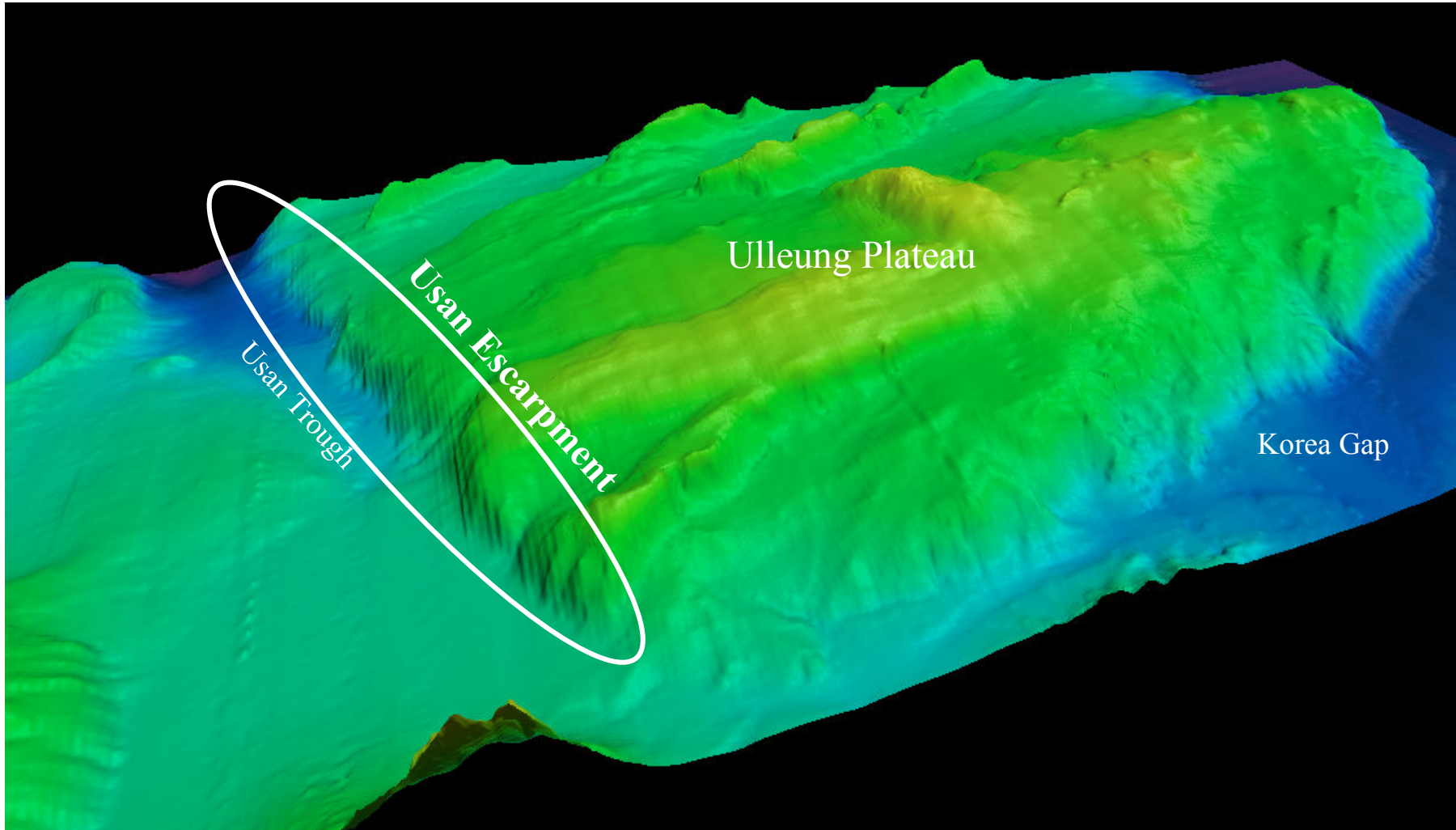


Image Map of Usan Escarpment

Usan Escarpment

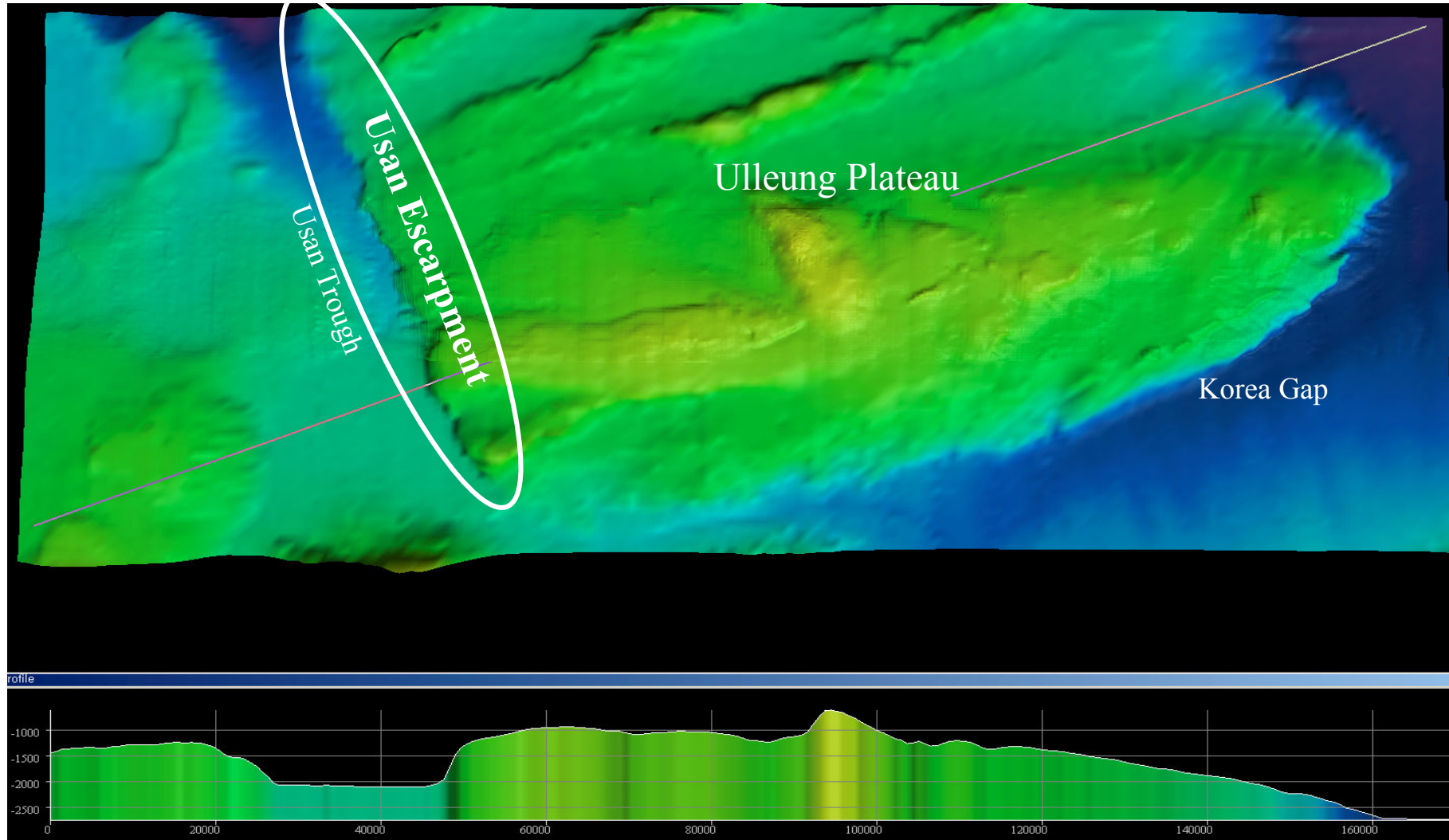


Image Map and Profile at the cross of Usan Escarpment