

UNDERSEA FEATURE NAME PROPOSAL

Ocean or Sea: [East Sea](#)

Name Proposed: [Ulsan Canyon](#)

Coordinates: A – of midpoint or summit: Lat. [35° 27' 25"N](#) Long. [129° 59' 06"E](#)  
[55](#) kilometres in [E](#) direction from [Ulsan Hang](#) ('Hang' means harbor)

B – extremities (if linear feature):

Lat. [35° 15' 57"N](#) to Lat. [35° 38' 47"N](#)  
Long. [129° 50' 14"E](#) to Long. [130° 10' 35"E](#)

Description (kind of feature): [Canyon](#)

Identifying or categorizing characteristics (shape, dimensions, total relief, least depth, steepness, etc.):

[Ulsan Canyon](#) is located about 55km to the east of [Ulsan](#) harbour, first appearing on the southeast coast of the [Korean peninsula](#), abutting the [East Sea](#). [Ulsan](#) is a city with a population of more than one million persons.

[The estuarine appearance of the feature on the continental shelf gradually becomes a relatively narrow depression with steep sides and a substantial gradient as the feature is traced down the continental slope into \[Ulleung Basin\]\(#\). \[Ulsan Canyon\]\(#\) most likely was formed by headward erosion of the continental slope by turbidity currents transporting terrestrially-derived sediments from the Korean peninsula. The width of the canyon is approximately 5km, and the total length is approximately 50km. The depth ranges from less than 150m to over 740m.](#)

Associated features:

Chart reference:

Shown with name on chart No. \_\_\_\_\_

Shown but not named on chart No. [102A \(1:0.75 mln\)](#), [B4623\(Bathymetric chart, 1:0.5mln\)](#) and [INT 5251\(1:0.25 mln\)](#) Published by [Korea](#)

Not shown but within area covered by chart No. \_\_\_\_\_

Reason for choice of name (if a person, state how associated with the feature to be named):

[Ulsan Canyon](#) is in close proximity to [Ulsan Hang](#) (Ulsan harbor).

**Discovery facts:**

**Date:** [Apr. ~ Nov. 1996](#) **by (ship):** [Haeyang 2000](#)

**By means of (equipment):** [Multi-Beam Echosounder \(SeaBeam 2100\)](#)

**Navigation used:** [DGPS \(Trimble DGPS 4000DS\)](#)

**Estimated positional accuracy in nautical miles:** [± 0.0027 miles](#)

**Description of survey** (track spacing, line crossings, grid network, etc.):

[The line spacing of survey tracks was less than 400 m in order to ensure 100 % coverage of our multi-beam system.](#)

**Nature and repository of other survey activities** (dredge samples, cores, magnetics, gravity, photographs, etc.):

[Gravity and magnetic surveys were also conducted.](#)

**Supporting material** (enclose, if possible, a sketch map of the survey area, profiles of the features, etc., with reference to prior publication, if any):

[See attached bathymetric maps, 3-D image maps, and survey track chart.](#)

**Submitted by:** [The Korea Committee on Marine Geographical Names, Republic of Korea](#)

**Date:** [April 25, 2008](#)

**Address:** [1-17, 7-ga Hang-dong, Jung-gu, Incheon, 400-800, Republic of Korea](#)

[Tel : +82 32 885 3825](#)

[Fax : +82 32 885 3088](#)

**Concurred in by** (if applicable):

**National Authority** (if any): [National Oceanographic Research Institute](#)

**Address:** [1-17, 7-ga Hang-dong, Jung-gu, Incheon, 400-800, Republic of Korea](#)

[Tel : +82 32 885 3825](#)

[Fax : +82 32 885 3088](#)

**Note:** this form should be forwarded, when completed:

a) **If the undersea feature is located in territorial waters :-**

to your "National Authority of Undersea Feature Names" or, if this does not exist or is not known, either to the International Hydrographic Bureau or to the Intergovernmental Oceanographic Commission (see addresses below) ;

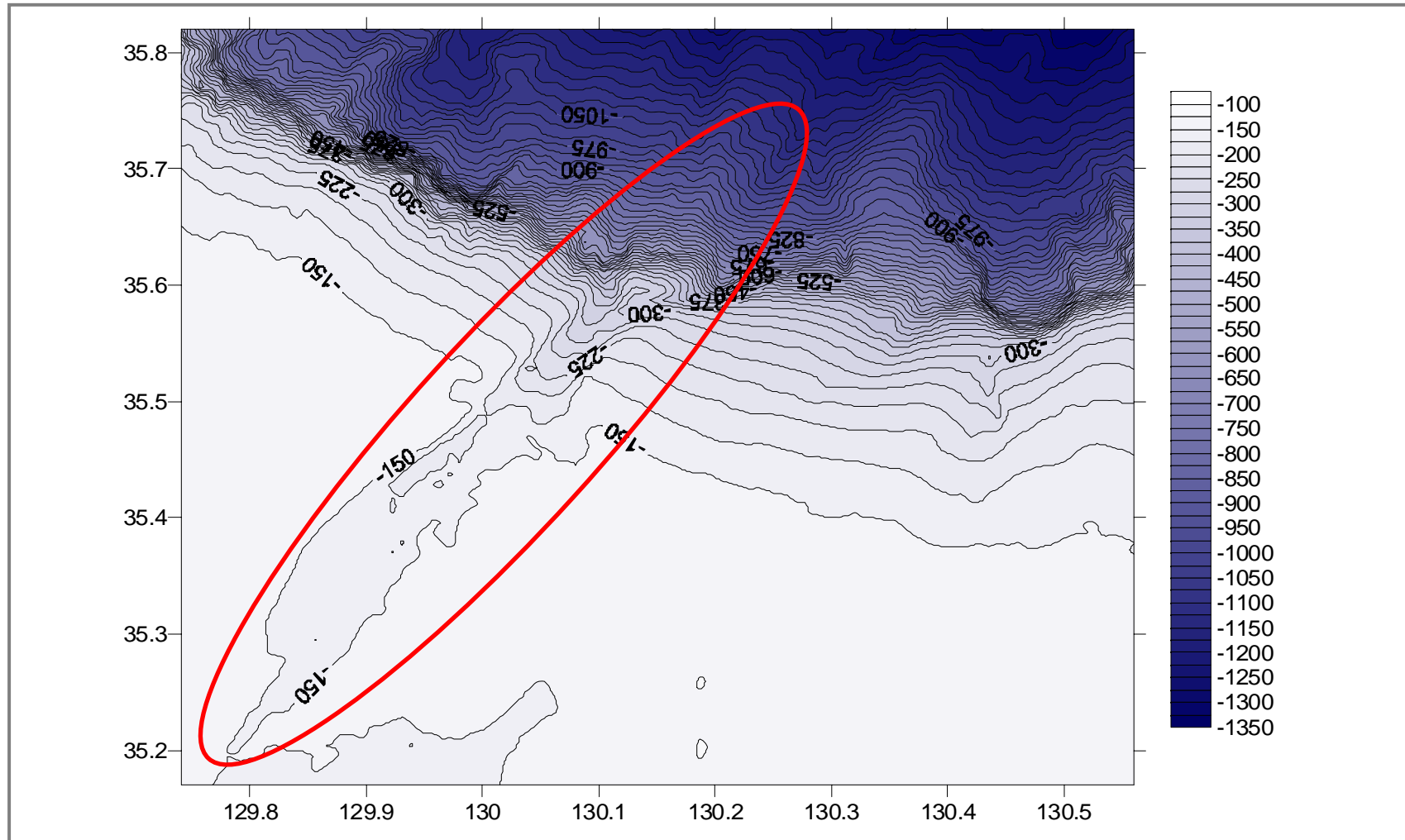
**b) If the undersea feature is located in international waters :-**

to the International Hydrographic Bureau or to the Intergovernmental Oceanographic Commission, at the following addresses :

International Hydrographic Bureau  
4, quai Antoine 1er  
B.P. 445  
MC 98011 MONACO CEDEX  
Principality of MONACO  
Fax: +377 93 10 81 40  
E-mail: [info@ihb.mc](mailto:info@ihb.mc)

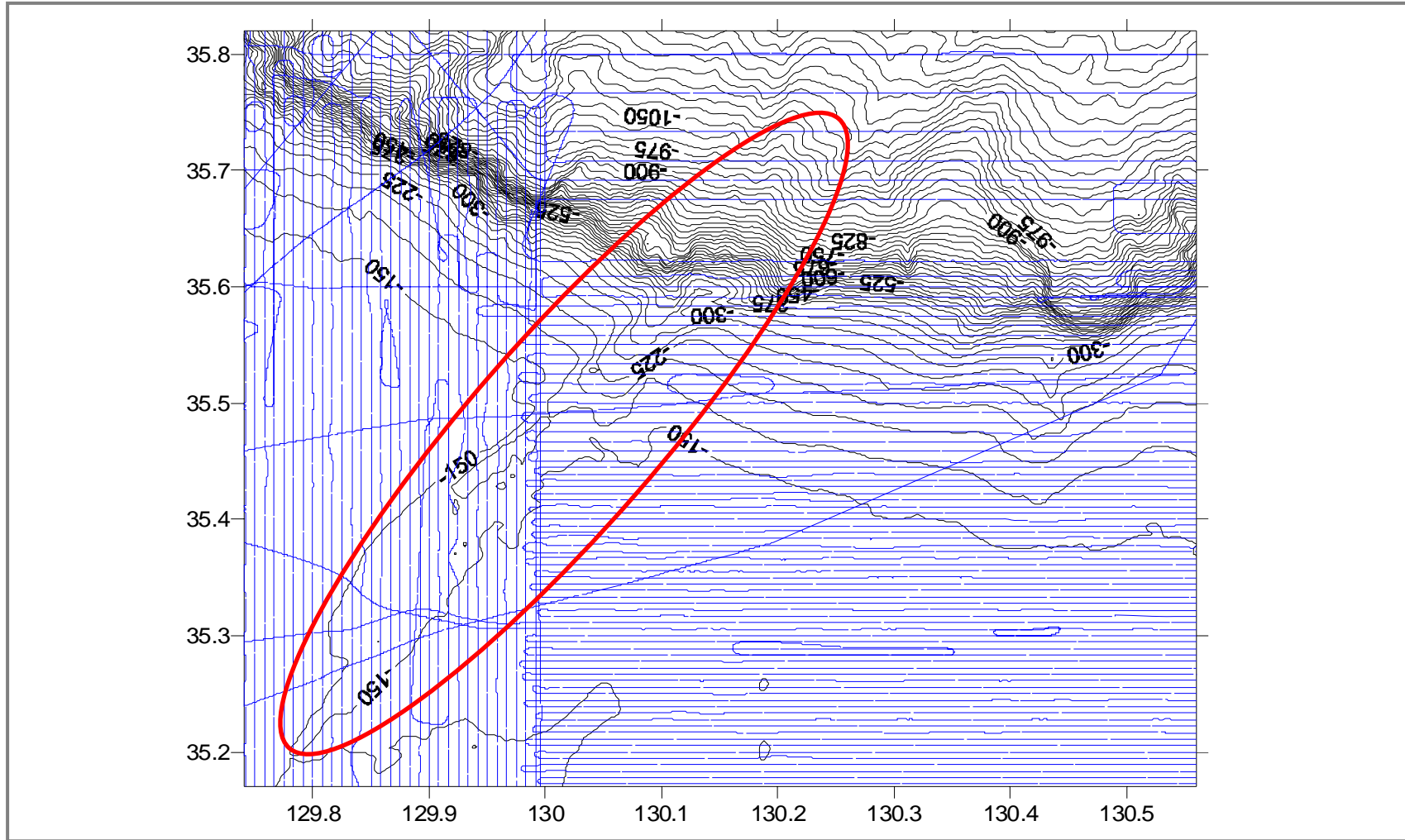
Intergovernmental Oceanographic Commission  
UNESCO  
Place de Fontenoy  
75700 PARIS  
FRANCE  
Fax: +33 1 45 68 58 12  
E-mail: [info@unesco.org](mailto:info@unesco.org)

# Ulsan Canyon



Bathymetric contour map of Ulsan Canyon (Contour interval : 25m)

# Ulsan Canyon



The track lines in survey area

# Ulsan Canyon

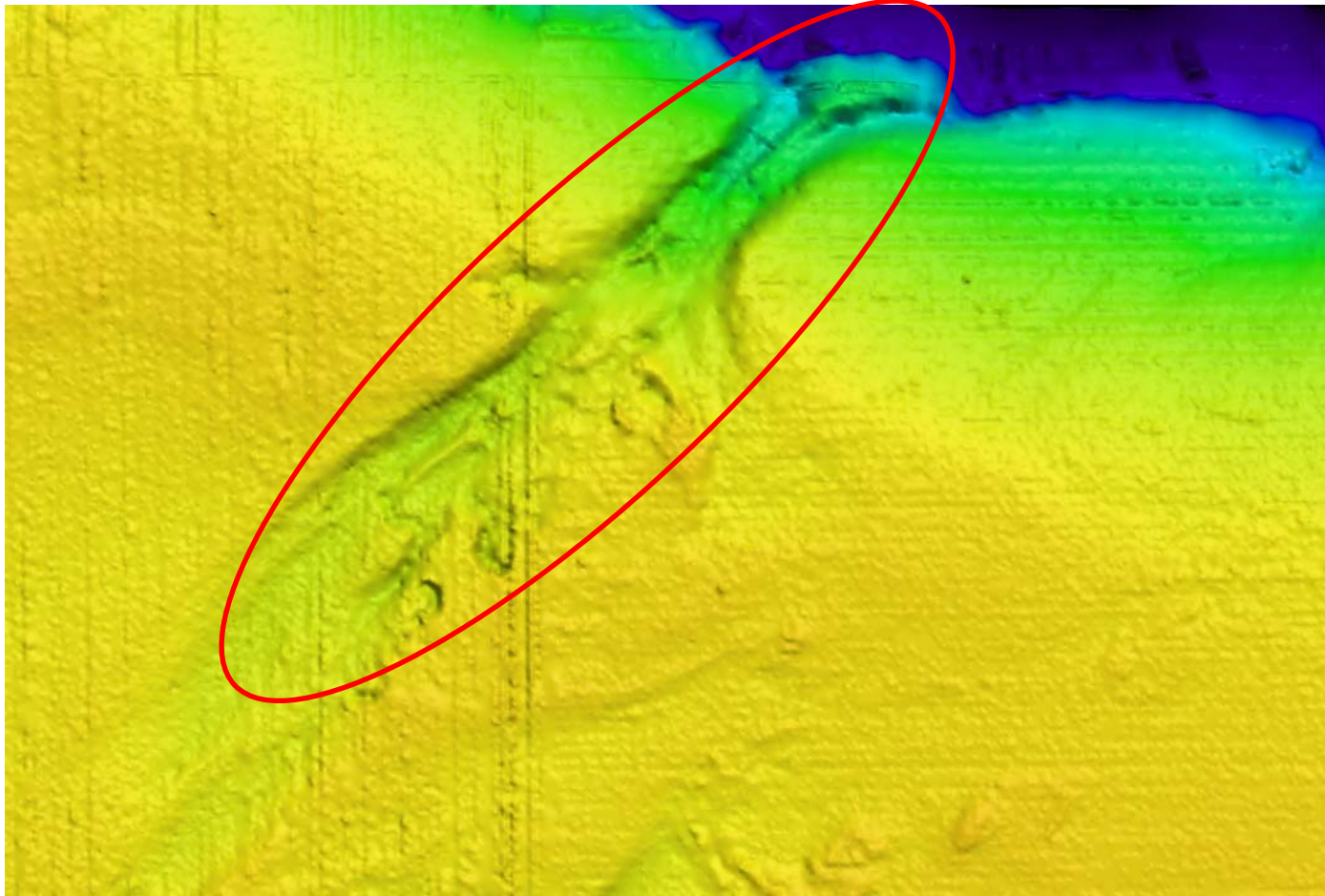


Image map of Ulsan Canyon

# Ulsan Canyon

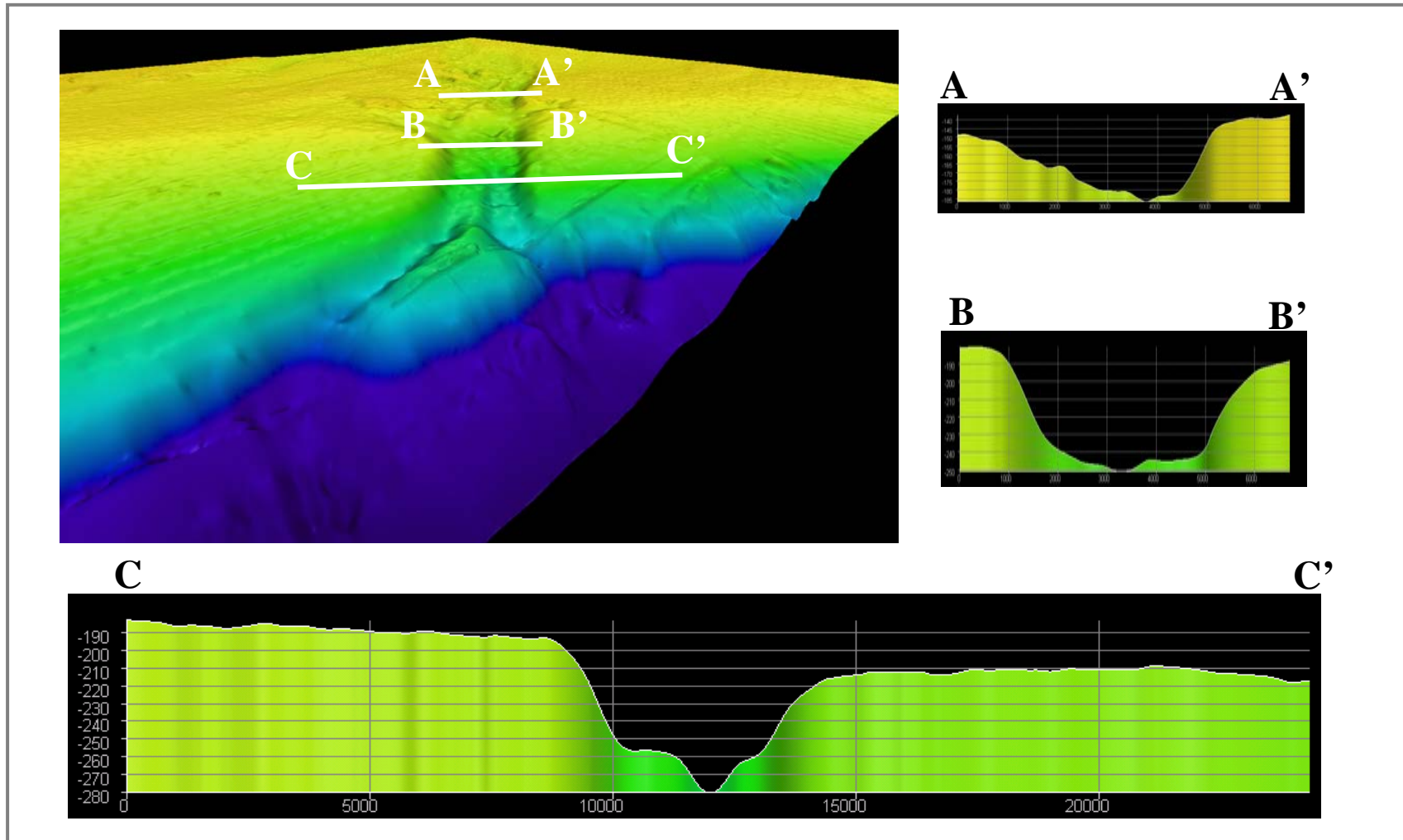


Image map and profile across Ulsan Canyon