

UNDERSEA FEATURE NAME PROPOSAL

Ocean or Sea: [East Sea](#)

Name Proposed: [Wangdol Reef](#)

Coordinates: A – of midpoint or summit: Lat. [36° 43' 09"N](#) Long. [129° 43' 55"E](#)
[25 kilometres in E direction from Hupo Hang \('Hang' means harbor\)](#)

B – extremities (if linear feature):

Lat.		to	Lat.
Long.			Long.

Description (kind of feature): [Reef](#)

Identifying or categorizing characteristics (shape, dimensions, total relief, least depth, steepness, etc.):

[Wangdol Reef](#) is a name that has been established in Korean hydrographic resources for at least 18 years. It is situated on the northern part of [Hupo Bank](#), about 25km east of [Hupo Hang](#) (Hupo Harbour) on the east coast of the [Korean peninsula](#), in the East Sea. The reef is a hazard to surface navigation, rising to a minimum depth of 5.3 meters.

Associated features:

Chart reference:

Shown with name on chart No. [101\(1:1.5 mln\)](#), [849\(1:1 mln\)](#), [102A \(1:0.75 mln\)](#),
[B4623\(Bathymetric chart, 1:0.5mln\)](#) and
[INT 5251\(1:0.25 mln\)](#) Published by Korea

Shown but not named on chart No. _____

Not shown but within area covered by chart No. _____

Reason for choice of name (if a person, state how associated with the feature to be named):

[Wangdol](#) is from the Korean language, meaning "great stone". [Wangdolcho](#) ("cho" means reef) was initially named in the first edition of the [Korea Coast Pilot](#) in 1990. Since that time, [Wangdol Reef](#) has been in use on charts and in the literature of both the scientific and hydrographic communities.

Discovery facts:

Date: [Apr. - Nov. 1985](#) **by (ship):** [Busan 802](#)

By means of (equipment): [Single-Beam Echosounder \(DESO-20, Krupp Atlas\)](#)

Navigation used: [Trisponder \(Del Norte\)](#)

Estimated positional accuracy in nautical miles: [± 0.0027 miles](#)

Date: [Aug. - Sep. 2007](#) **by (ship):** [Donghero](#)

By means of (equipment): [Multi-Beam Echosounder \(EM-3002, Kongsberg\)](#)

Navigation used: [DGPS \(Trimble DGPS DSM212\)](#)

Estimated positional accuracy in nautical miles: [± 0.001 miles](#)

Description of survey (track spacing, line crossings, grid network, etc.):

[The line spacing of survey tracks was less than 30m with single-beam echosounder system and less than 200m in order to ensure 100 % coverage of the multi-beam system.](#)

Nature and repository of other survey activities (dredge samples, cores, magnetics, gravity, photographs, etc.):

[Dredge samples and seismic survey.](#)

Supporting material (enclose, if possible, a sketch map of the survey area, profiles of the features, etc., with reference to prior publication, if any):

[See attached bathymetric maps, 3-D image maps, and survey track chart.](#)

Submitted by: [The Korea Committee on Marine Geographical Names, Republic of Korea](#)

Date: [April 25, 2008](#)

Address: [1-17, 7-ga Hang-dong, Jung-gu, Incheon, 400-800, Republic of Korea](#)

[Tel : +82 32 885 3825](#)

[Fax : +82 32 885 3088](#)

Concurred in by (if applicable):

National Authority (if any): [National Oceanographic Research Institute](#)

Address: [1-17, 7-ga Hang-dong, Jung-gu, Incheon, 400-800, Republic of Korea](#)

[Tel : +82 32 885 3825](#)

[Fax : +82 32 885 3088](#)

Note: this form should be forwarded, when completed:

a) If the undersea feature is located in territorial waters :-

to your "National Authority of Undersea Feature Names" or, if this does not exist or is not known, either to the International Hydrographic Bureau or to the Intergovernmental Oceanographic Commission (see addresses below) ;

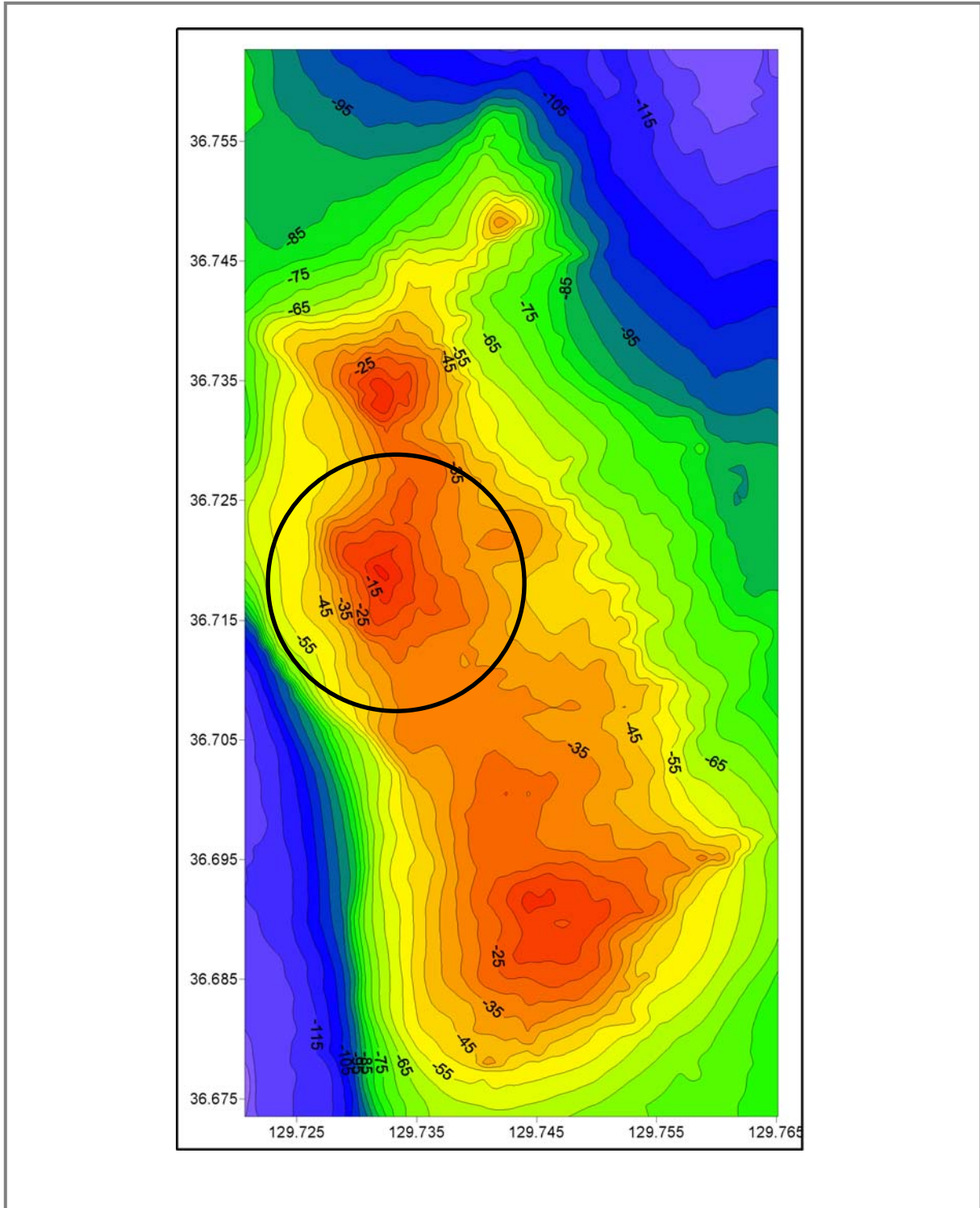
b) If the undersea feature is located in international waters :-

to the International Hydrographic Bureau or to the Intergovernmental Oceanographic Commission, at the following addresses :

International Hydrographic Bureau
4, quai Antoine 1er
B.P. 445
MC 98011 MONACO CEDEX
Principality of MONACO
Fax: +377 93 10 81 40
E-mail: info@ihb.mc

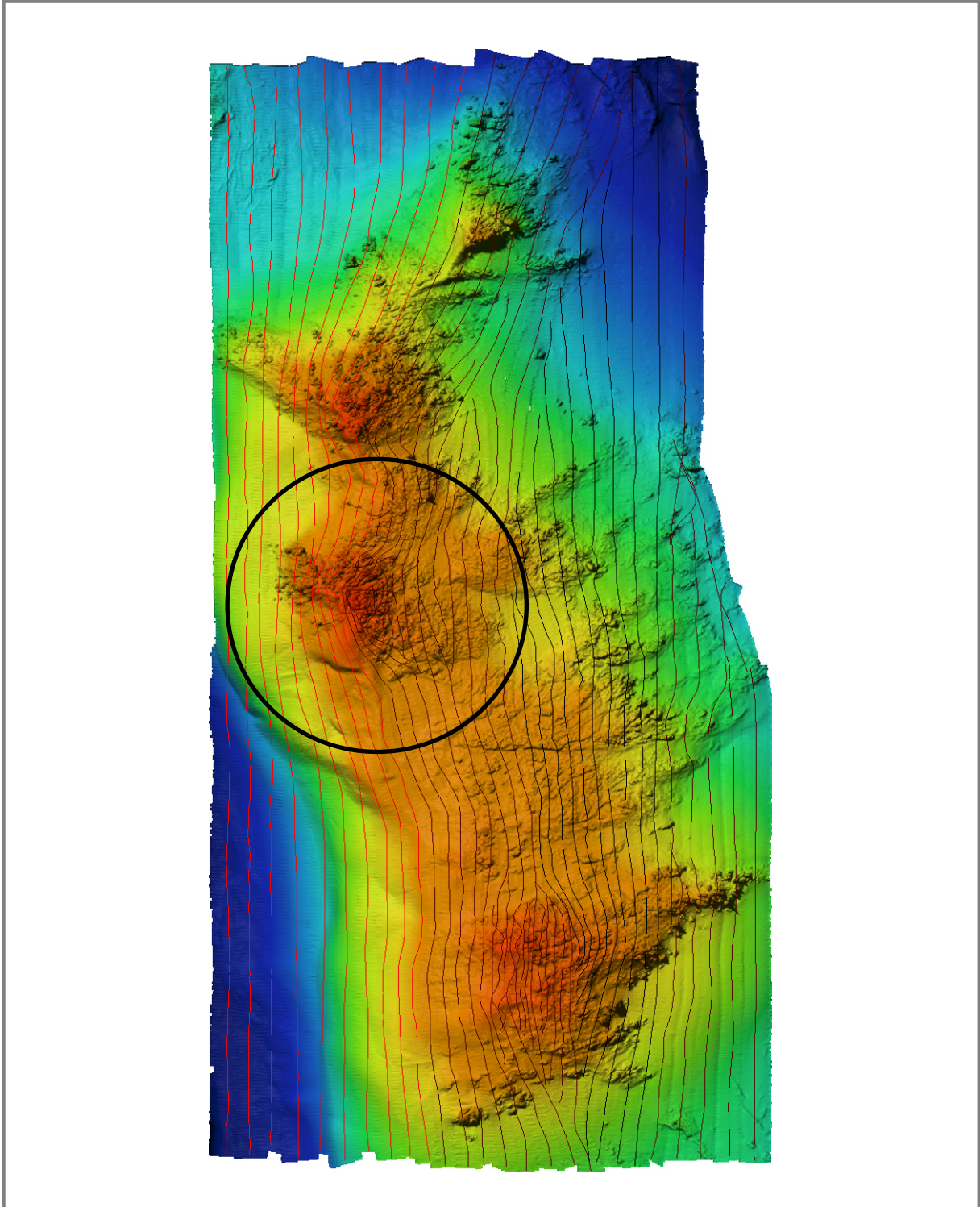
Intergovernmental Oceanographic Commission
UNESCO
Place de Fontenoy
75700 PARIS
FRANCE
Fax: +33 1 45 68 58 12
E-mail: info@unesco.org

Wangdol Reef



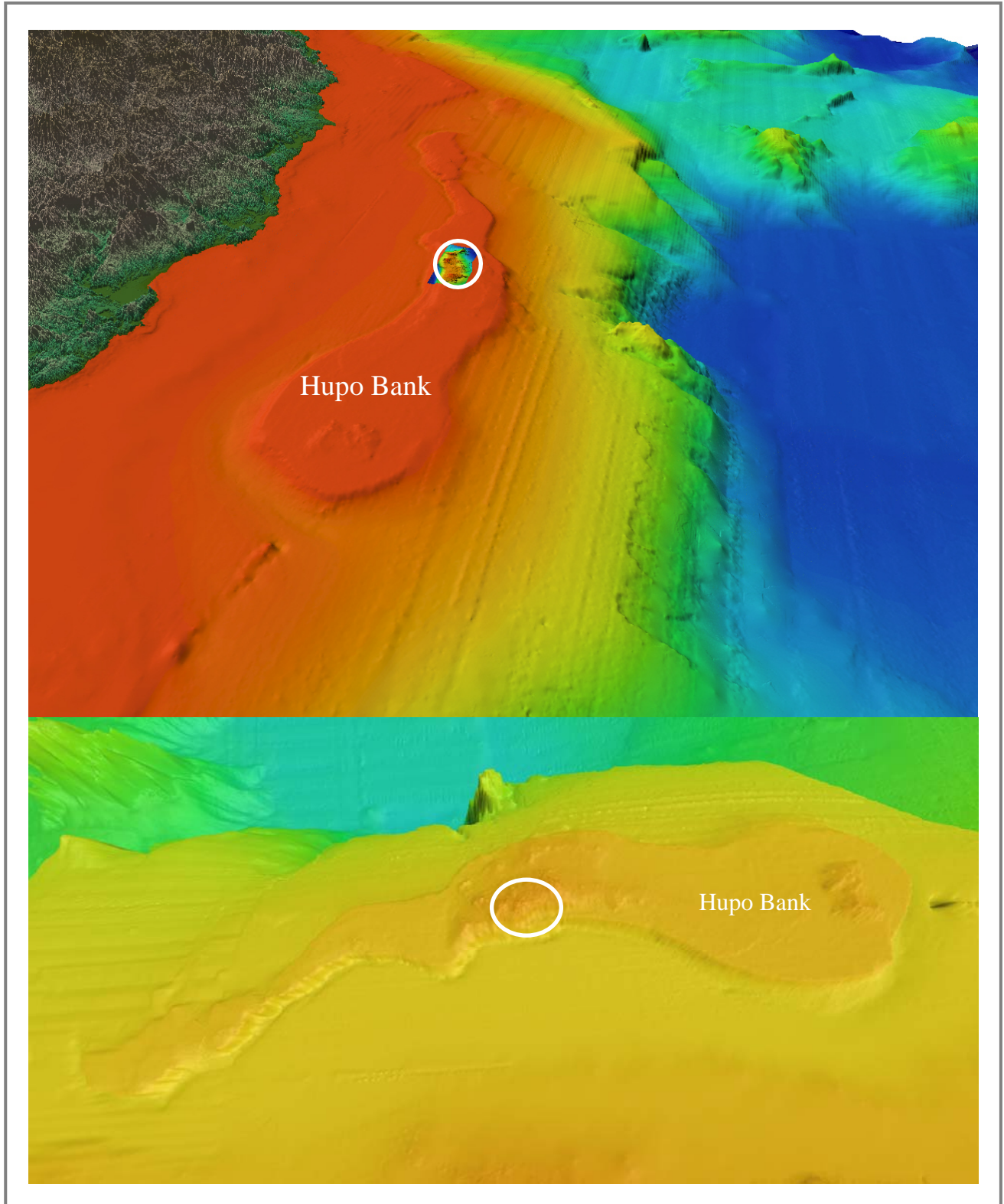
Bathymetric contour map of Wangdol Reef(Contour interval : 5 m)

Wangdol Reef



The track lines in survey area

Wangdol Reef



Wangdol Reef

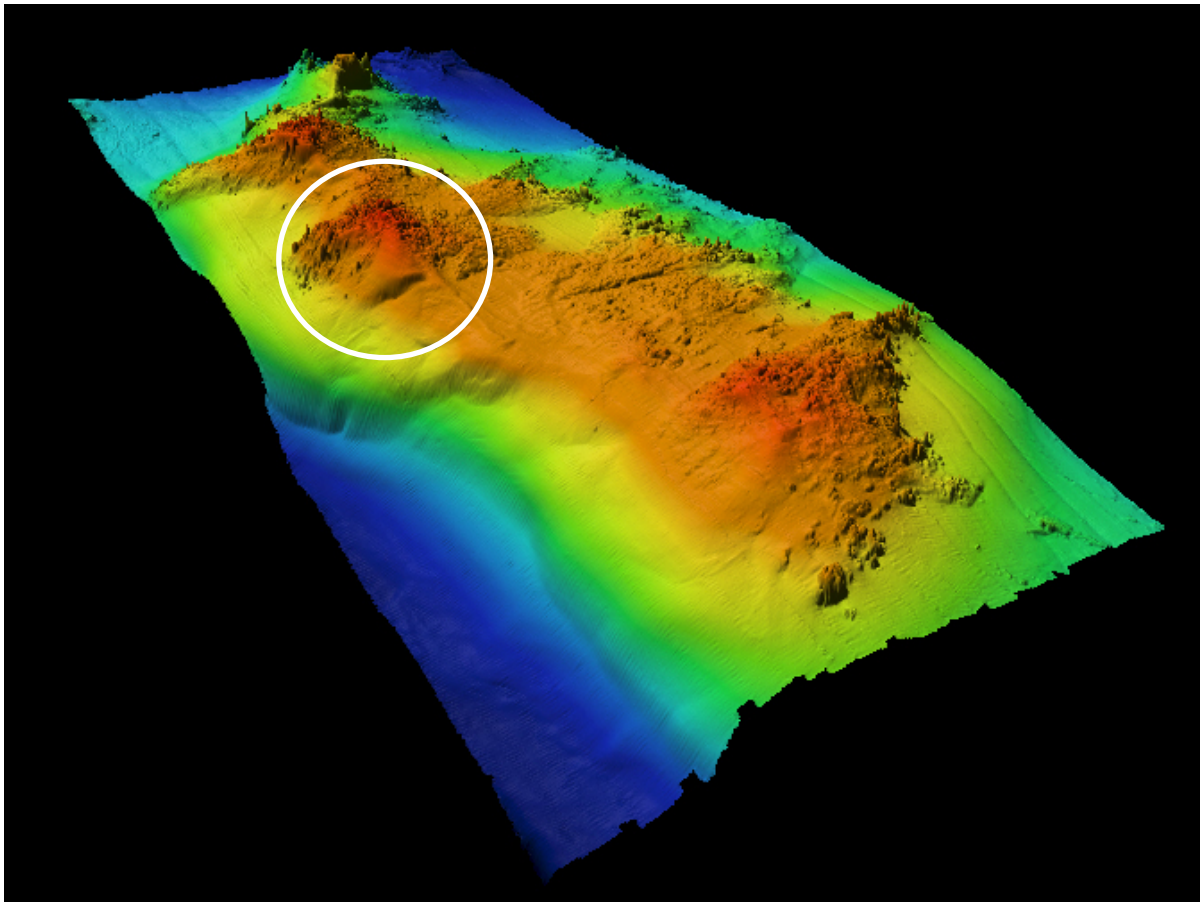


Image map of Wangdol Reef

Wangdol Reef

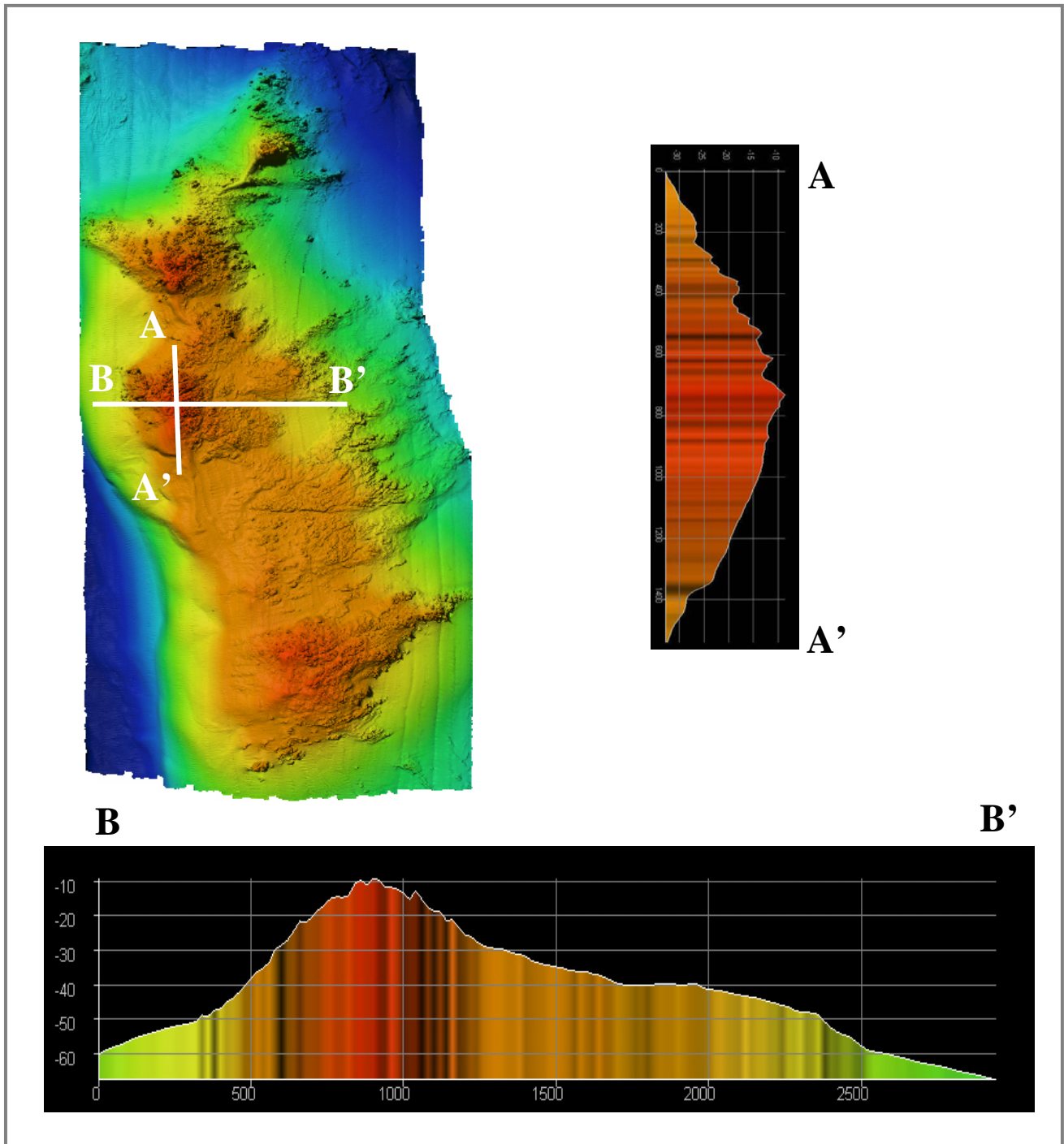


Image map and profile across Wangdol Reef