

UNDERSEA FEATURE NAME PROPOSAL

Ocean or Sea: **West Pacific Ocean**

Name proposed: **Onnuri Tablemount**

Coordinates: A - of midpoint or summit: Lat. **15°05'N**, Long. **159°15'E**

131 kilometres in **SW (241°)** direction from **Zubov Seamount**

Description (kind of feature): **Tablemount**

Identifying or categorizing characteristics (shape, dimensions, total relief, least depth, steepness, etc.):

Onnuri Tablemount has a flat summit with a minimum depth of approximately 1,100 m and a total relief of about 4,400 m above the base isobath at 5,500 meters. The base has a configuration of about 55 km by 45 km, with an average slope angle of about 13°.

Associated features: **a part of unnamed seamounts in the western Pacific Ocean**

Chart reference

Not shown but within area covered by chart No. UKHO 4506 (scale 1:3.5mln).

Reason for choice of name (if a person, state how associated with the feature to be named):

ONNURI is the name of the Korea Ocean Research & Development Institute (KORDI) research vessel, which discovered this feature in 2001. ONNURI is equipped with a SeaBeam 2000 multibeam echosounding system and has been conducting surveys and oceanographic research in the central Pacific Ocean since 1992, including the location of manganese crusts and nodule deposits.

Discovery facts:

Date **June 14-28, 2001** by (individuals or ship): **R/V Onnuri**

By means of (equipment): **Multibeam Echosounder (SeaBeam2000)**

Navigation used: **DGPS with KonMap system**

Estimated positional accuracy in nautical miles: **±0.001 miles**

Description of survey (track spacing, line crossing, grid network, etc.):

Line- spacing of survey tracks was adjusted to ensure 100% multibeam coverage

Nature and repository of other survey activities (dredge samples, cores, magnetics, gravity, photographs, etc.):

Seismic, magnetic, and gravity data were also collected

Supporting material (enclose, if possible, a sketch map of the survey area, profiles of the features, etc., with reference to prior publication, if any):

See attached bathymetric map, survey track chart, and 2-D/3-D image maps

Submitted by: **Korea Committee on Marine Geographical Names, Republic of Korea**

Date: **August 24, 2009**

Address: **195 Seohaero, Jung-gu, Incheon 400-800, Republic of Korea**

Concurred in by (if applicable):

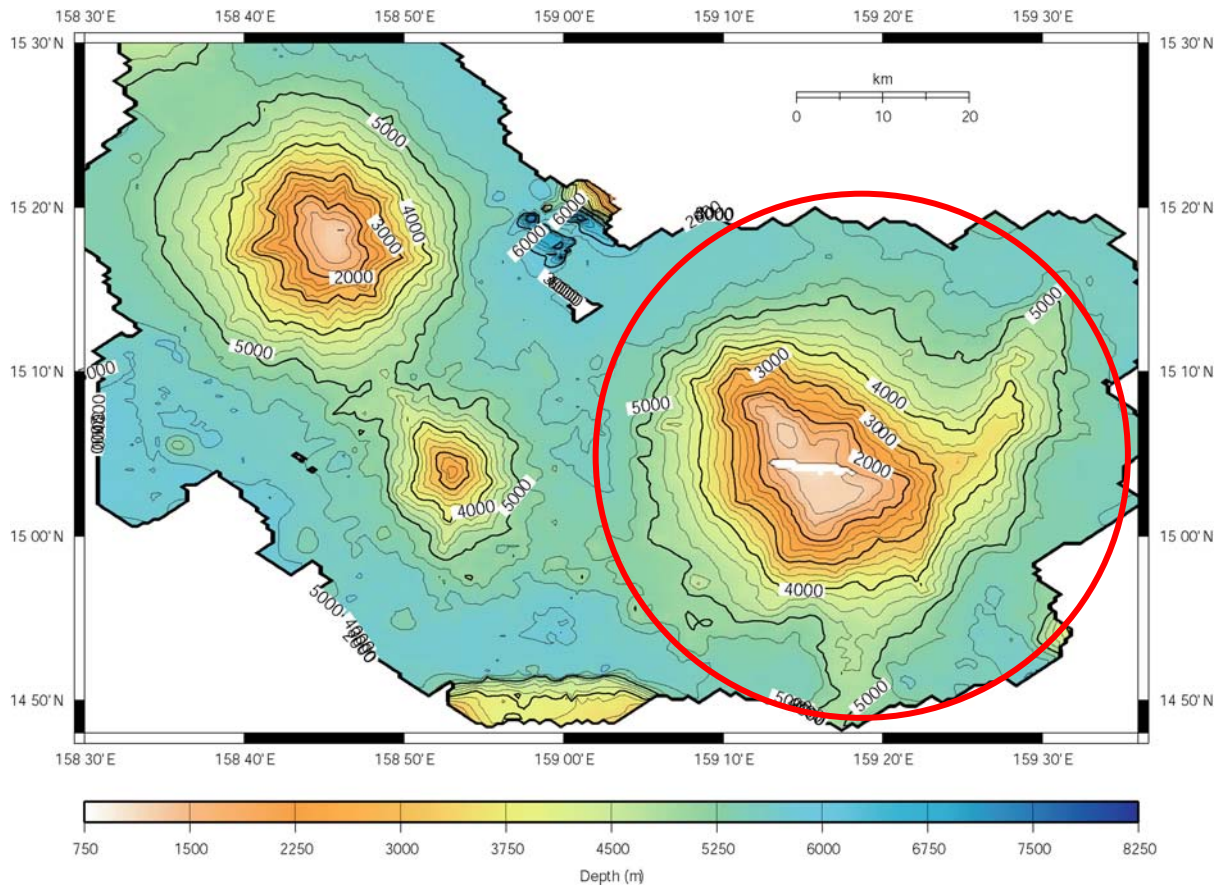
National Authority (if any): **Korea Hydrographic and Oceanographic Administration**

Address: **195 Seohaero, Jung-gu, Incheon 400-800, Republic of Korea**

Tel: **+82-32-885-3825**

Fax: **+82-32-885-3088**

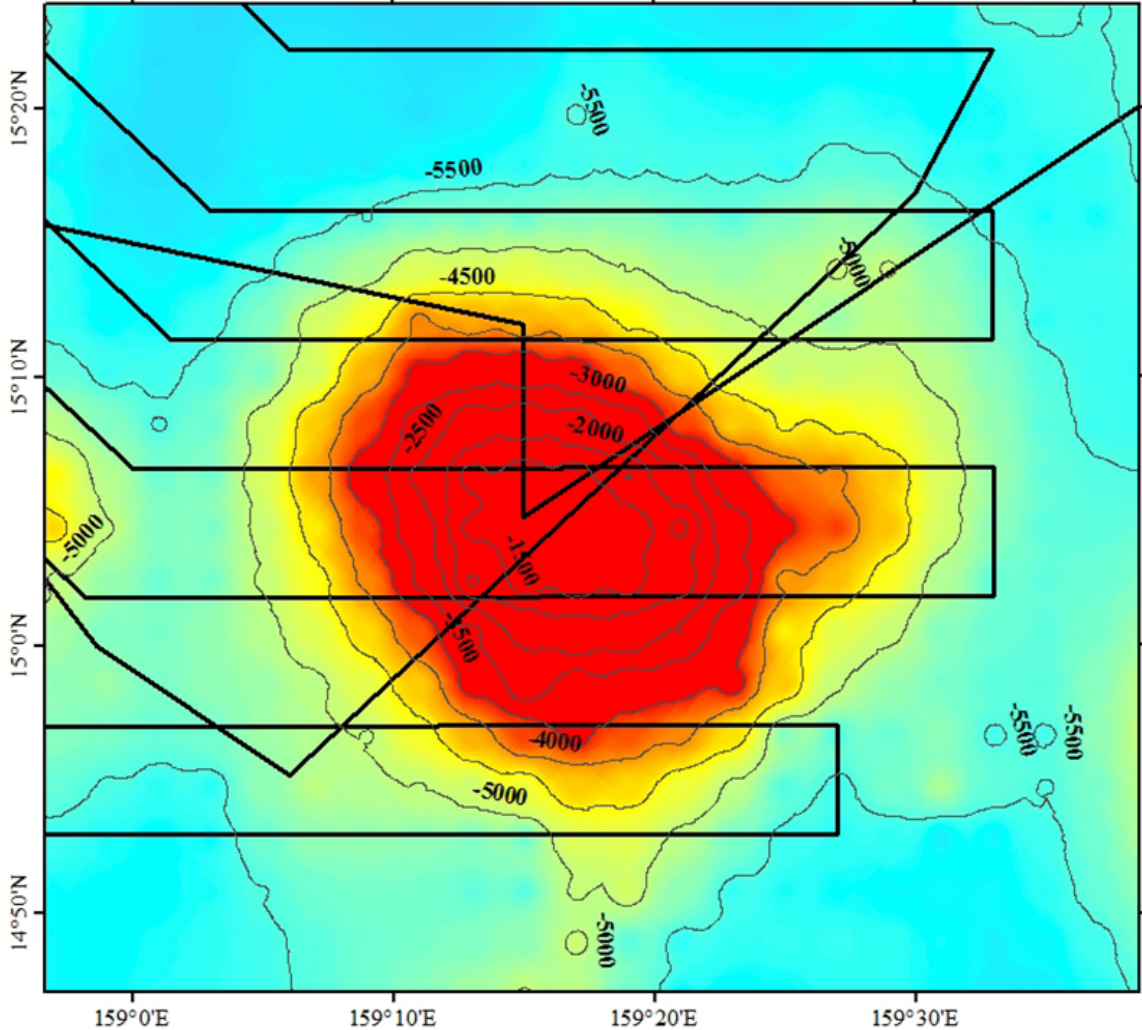
Onnuri Tablemount



2-D Bathymetric Contour Map of Onnuri Tablemount

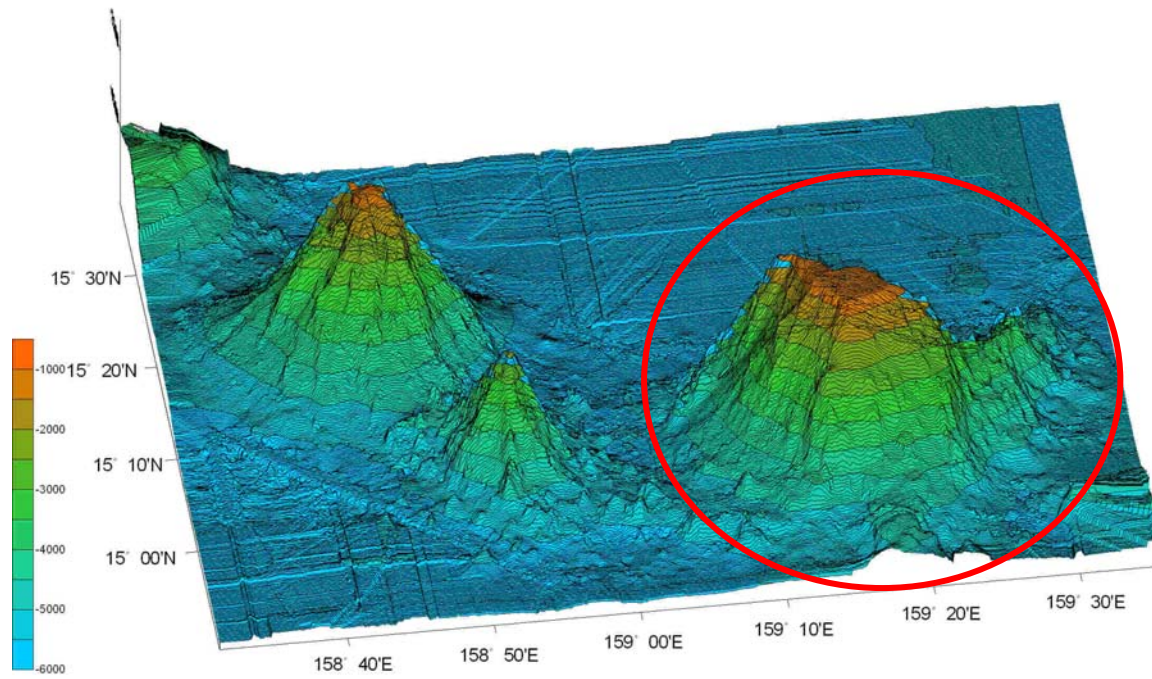
Contour Interval = 250 meters

Onnuri Tablemount



Multibeam survey tracklines for Onnuri Tablemount

Onnuri Tablemount



3-D Bathymetric Contour Map of Onnuri Tablemount