

**UNDERSEA FEATURE NAME PROPOSAL**

Ocean or Sea: **West Pacific Ocean**

Name proposed: **Baekdu Tablemount**

Coordinates: A - of midpoint or summit: Lat. **15°40'N**, Long. **160°05'E**

**30** kilometres in **W (269°)** direction from **Zubov Smt**

Description (kind of feature): **Tablemount**

Identifying or categorizing characteristics (shape, dimensions, total relief, least depth, steepness, etc.):

**Baekdu Tablemount has a flat summit at an approximate minimum depth of 1,100 m, with a total relief of about 3,650 m. The base isobath is defined as 4,750 m. The base configuration is about 55 km by 40 km and the average slope angle is about 8°. It joins with Zubov Seamount on a common base at a depth of 5,500 meters**

Associated features: **an unnamed seamount province in the west-central Pacific Ocean**

Chart reference:

**Not shown but within area covered by chart No. UKHO 4506 (scale 1:3.5mln).**

Reason for choice of name (if a person, state how associated with the feature to be named):

**Baekdu Mountain is the name of a volcanic body, located in the North Korea. It is the highest mountain on the Korean peninsula. Baekdu Mt. has been worshiped by the neighbouring people throughout history. Korean people consider it the place of their ancestral origin.**

**Discovery facts:**

**Date** **June 14-28, 2001** by (individuals or ship): **R/V Onnuri**

**By means of (equipment):** **Multibeam Echosounder (SeaBeam2000)**

**Navigation used:** **DGPS with KonMap system**

**Estimated positional accuracy in nautical miles:** **±0.001 miles**

**Description of survey** (track spacing, line crossing, grid network, etc.):

**Line-spacing of survey tracks was adjusted to ensure 100% multibeam coverage.**

**Nature and repository of other survey activities** (dredge samples, cores, magnetics, gravity, photographs, etc.):

**Seismic, magnetic, and gravity data were also collected**

**Supporting material** (enclose, if possible, a sketch map of the survey area, profiles of the features, etc., with reference to prior publication, if any):

**See attached bathymetric map, survey track chart, and 2-D/3-D image maps**

**Submitted by:** **Korea Committee on Marine Geographical Names, Republic of Korea**

**Date:** **August 24, 2009**

**Address:** **195 Seohaero, Jung-gu, Incheon 400-800, Republic of Korea**

**Concurred in by** (if applicable):

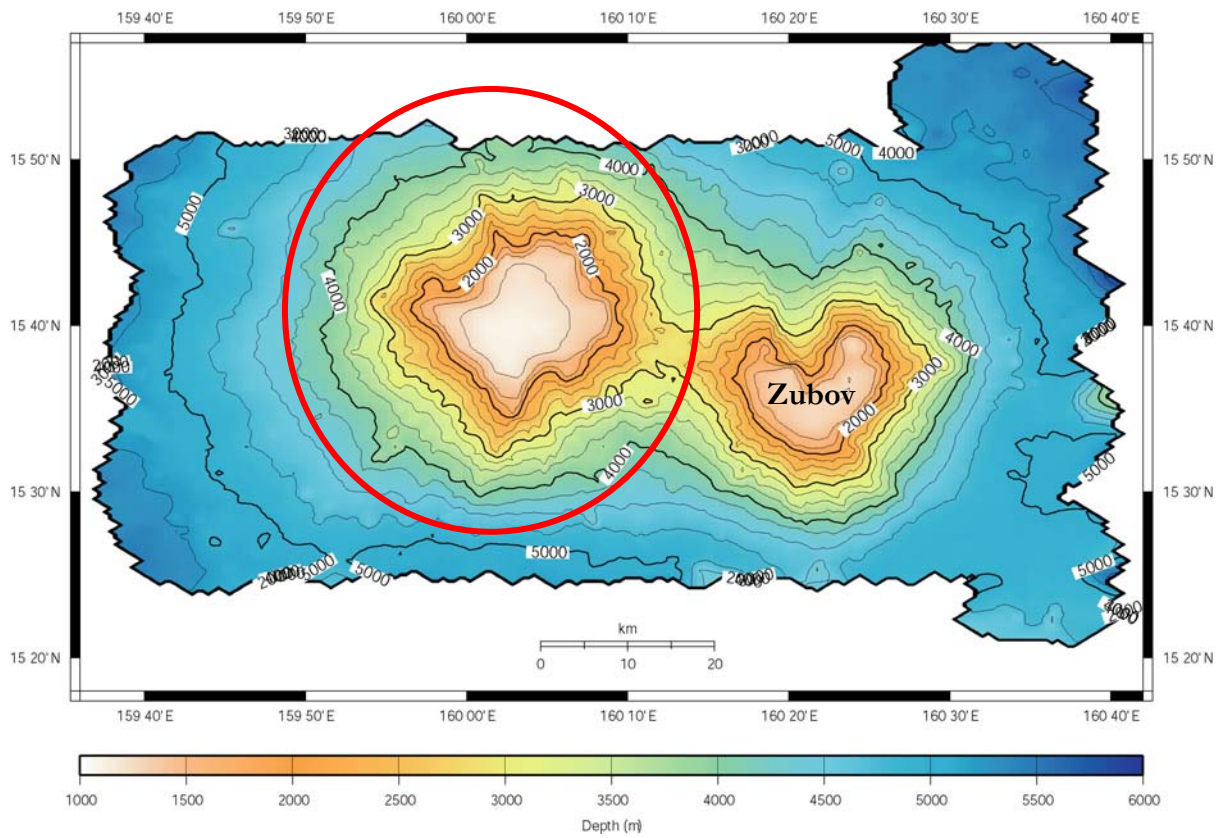
**National Authority** (if any): **Korea Hydrographic and Oceanographic Administration**

**Address:** **195 Seohaero, Jung-gu, Incheon 400-800, Republic of Korea**

**Tel:** **+82-32-885-3825**

**Fax:** **+82-32-885-3088**

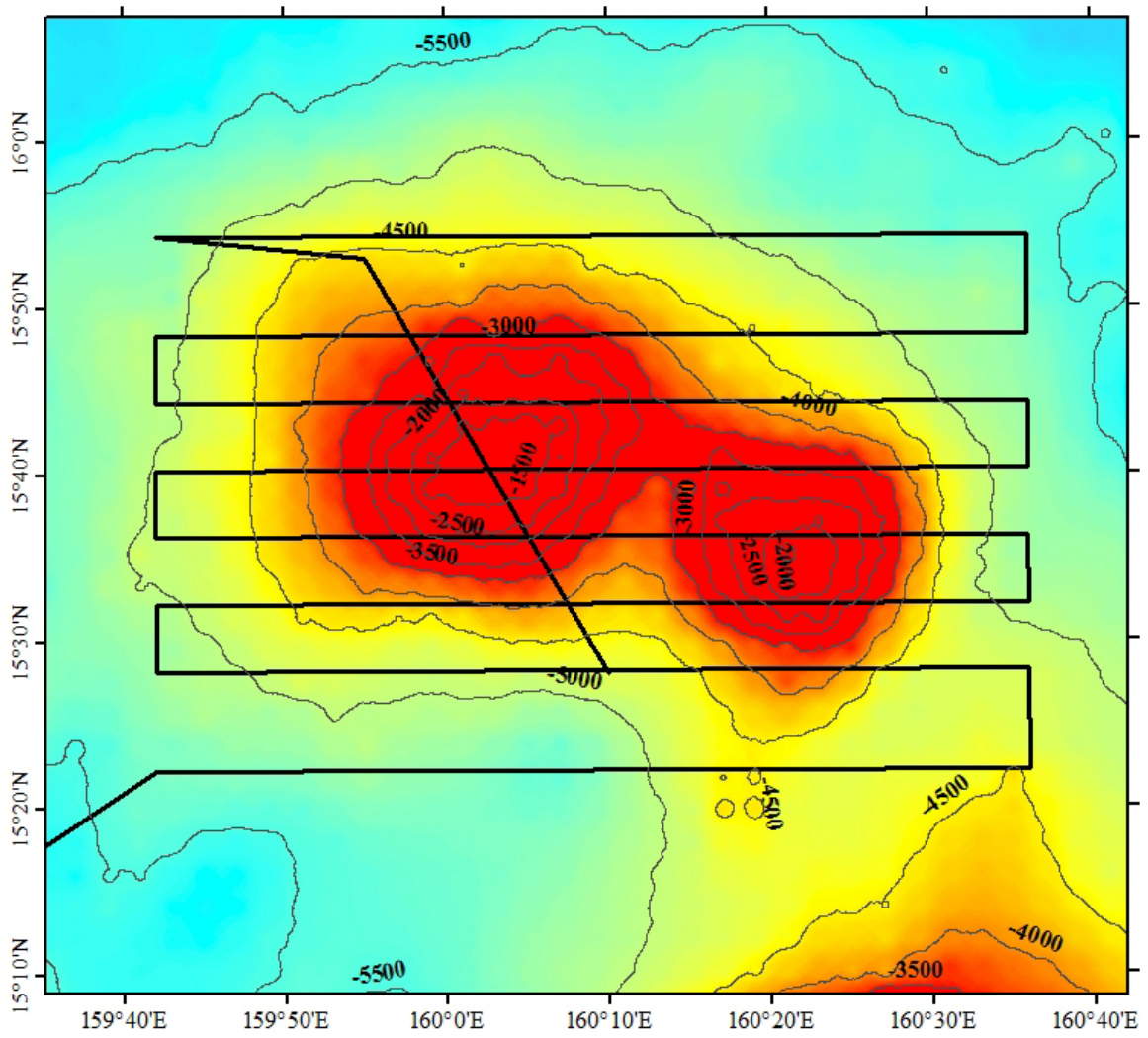
## Baekdu Tablemount



**2-D Bathymetric Contour Map of Baekdu Tablemount**

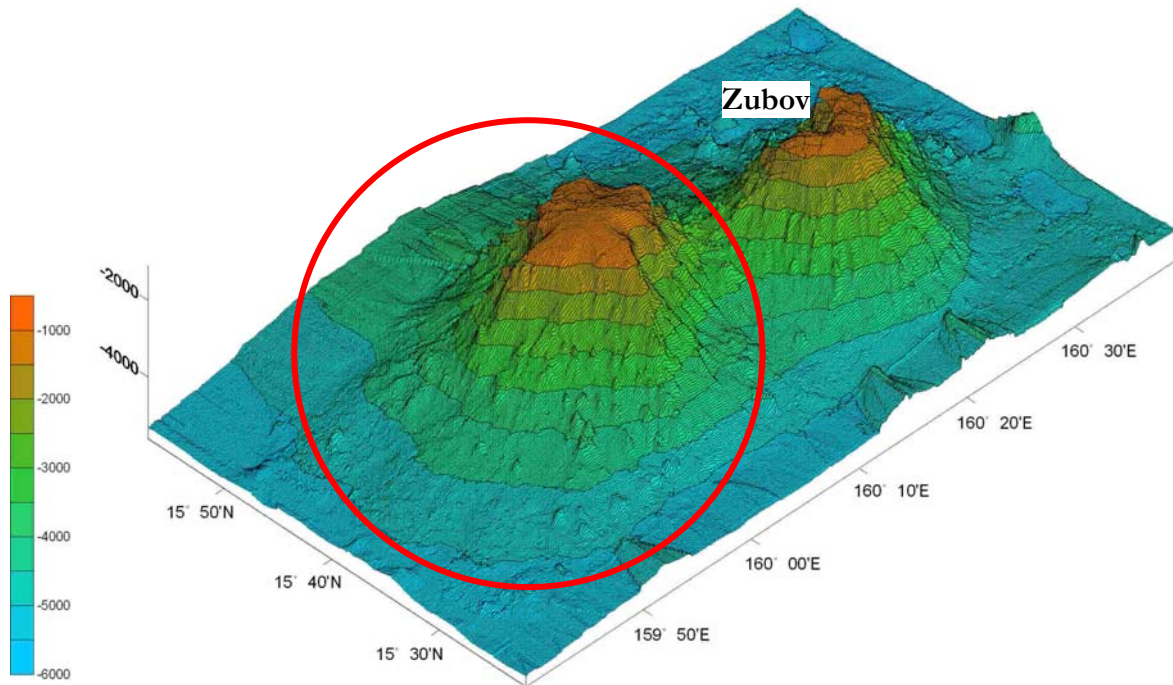
**Contour Interval = 250 meters**

# Baekdu Tablemount



Multibeam survey tracklines for Baekdu Tablemount

## Baekdu Tablemount



**3-D Bathymetric Contour Map of Baekdu Tablemount**