

**UNDERSEA FEATURE NAME PROPOSAL**

|                       |              |                                     |
|-----------------------|--------------|-------------------------------------|
| <b>Name Proposed:</b> | Sirius Guyot | <b>Ocean or Sea:</b> Atlantic Ocean |
|-----------------------|--------------|-------------------------------------|

|   |      |         |                 |                 |                    |                            |
|---|------|---------|-----------------|-----------------|--------------------|----------------------------|
| <b>Geometry</b> that best defines the feature (Yes/No): |      |         |                 |                 |                    |                            |
| Point   | Line | Polygon | Multiple points | Multiple lines* | Multiple polygons* | Combination of geometries* |
| Yes   |      | Yes     |                 |                 |                    |                            |

\* *Geometry should be clearly distinguished when providing the coordinates below.*

|                     |                           |                             |
|---------------------|---------------------------|-----------------------------|
| <b>Coordinates:</b> | Lat.                      | Long.                       |
|                     | 32°03.1'S (Central Point) | 032°46.52'W (Central Point) |
|                     | 32°00.42'S                | 032°51.42'W                 |
|                     | 31°58.83'S                | 032°47.52'W                 |
|                     | 32°01.10'S                | 032°43.67'W                 |
|                     | 32°03.00'S                | 032°40.73'W                 |
|                     | 32°06.15'S                | 032°40.85'W                 |
|                     | 32°06.28'S                | 032°44.42'W                 |
|                     | 32°06.70'S                | 032°47.96'W                 |
|                     | 32°03.32'S                | 032°49.63'W                 |
|                     | 32°02.40'S                | 032°52.07'W                 |

|                             |                         |   |
|-----------------------------|-------------------------|---|
| <b>Feature Description:</b> | Maximum Depth: - 4000 m | Steepness:                                    |
|                             | Minimum Depth: - 740 m  | Shape: Conical; Flat top                      |
|                             | Total Relief:           | Dimension/Size: 22 Km x 13 Km (approximately) |

**Associated Features:** Rio Grande Plateau

|                              |  |
|------------------------------|--|
| <b>Chart/Map References:</b> | Shown Named on Map/Chart:<br>Shown Unnamed on Map/Chart: 30 (201)<br>Within Area of Map/Chart: |
|------------------------------|--|

|                                   |  |
|-----------------------------------|--|
| <b>Reason for Choice of Name:</b> | Sirius is the name of the first ship from the Brazilian Navy which was especially projected and builded for hidrography. It has been carried out many surveys at the Brazilian continental margin since 1960. NHi Sirius was the Brazilian ship that acquired the multibeam data used in this proposal. Sirius is also a name of a brightest star from Canis Major Constellation, then an important star for navigation. |
|-----------------------------------|--|

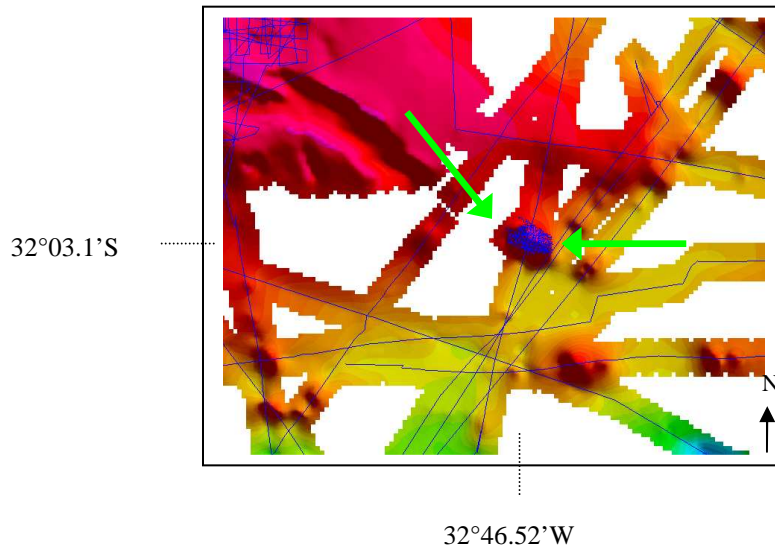
**Discovery Facts:**

Discovery Date: 1974  
Discoverer (Individual, Ship): Vema

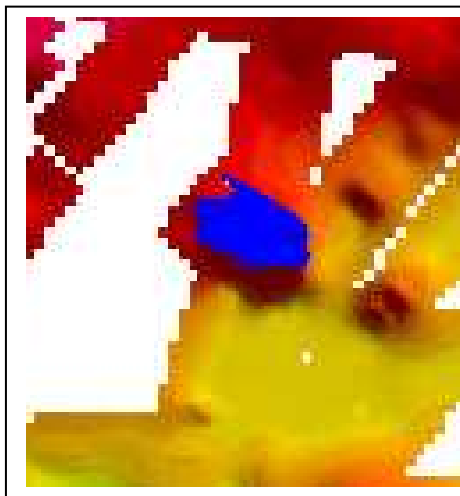
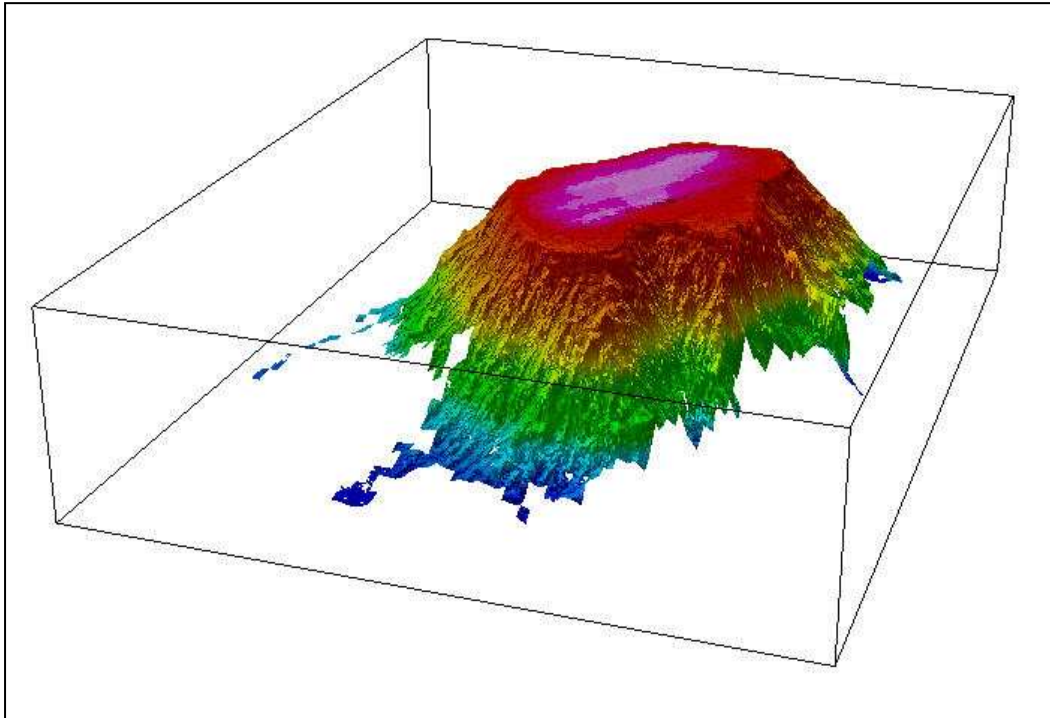
**Supporting Survey Data,  
including Track Controls:**

Date of Survey: Abril/2010  
Survey Ship: NHi Sírius  
Sounding Equipment: Multibeam – Simrad EM 302  
Type of Navigation: GPS  
Estimated Horizontal Accuracy (nm):  
Survey Track Spacing: Approximately 4 km

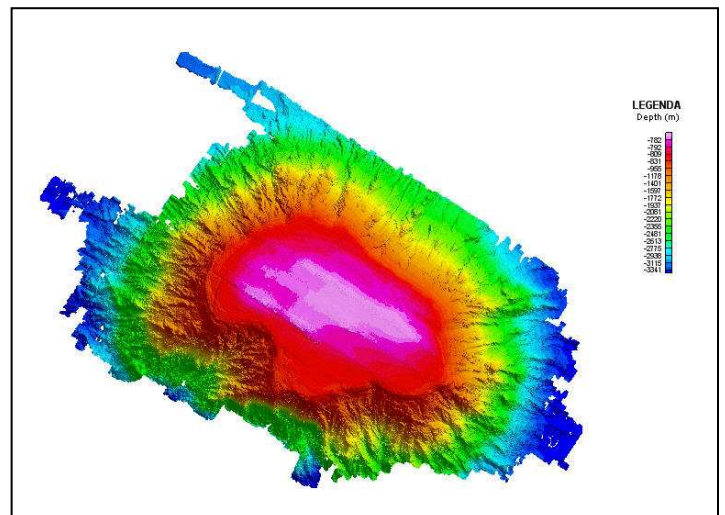
Location of Sirius Guyot



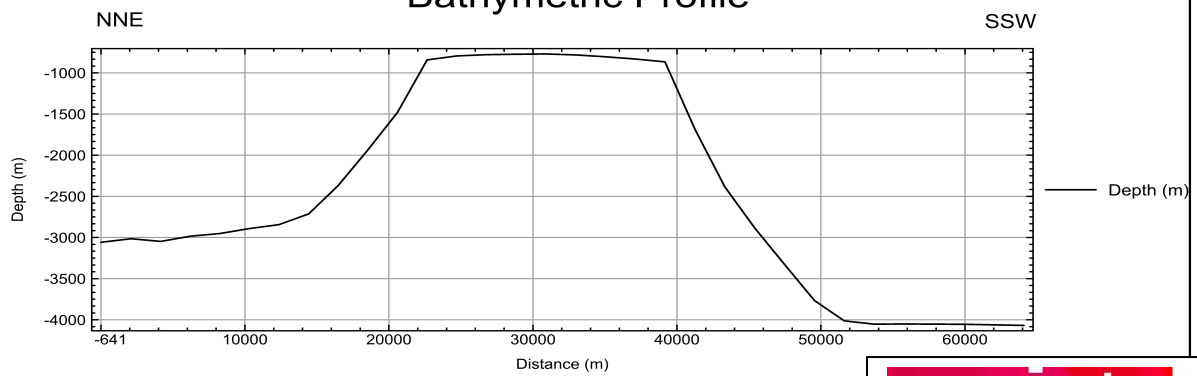
3D Model



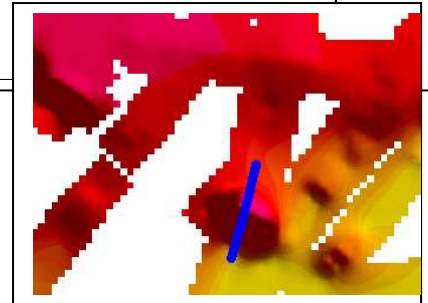
Multibeam track line (Blue)



## Bathymetric Profile



Line/group: DV3101



### Proposer(s):

Name(s): Directorate of Hydrography and Navigation

Date: July 2010

E-mail: ana.angelica@chm.mar.mil.br

Organization and Address: Barão de Jaceguay Street – Ponta da Armação – Niterói – Rio de Janeiro - Brazil  
ZIP code: 24.048-900

Concurrer (name, e-mail, organization and address):

