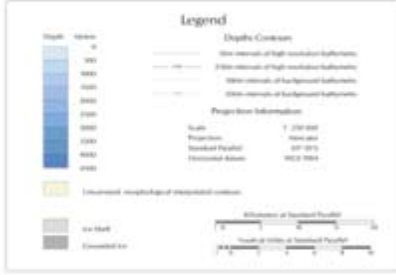


Result from the Polarstern Expedition ANT IX/3, ANT X/2, ANT XIX/2



Canyon System Bathymetry off Fimbulisen, 1:250000



Data Sources and References

References

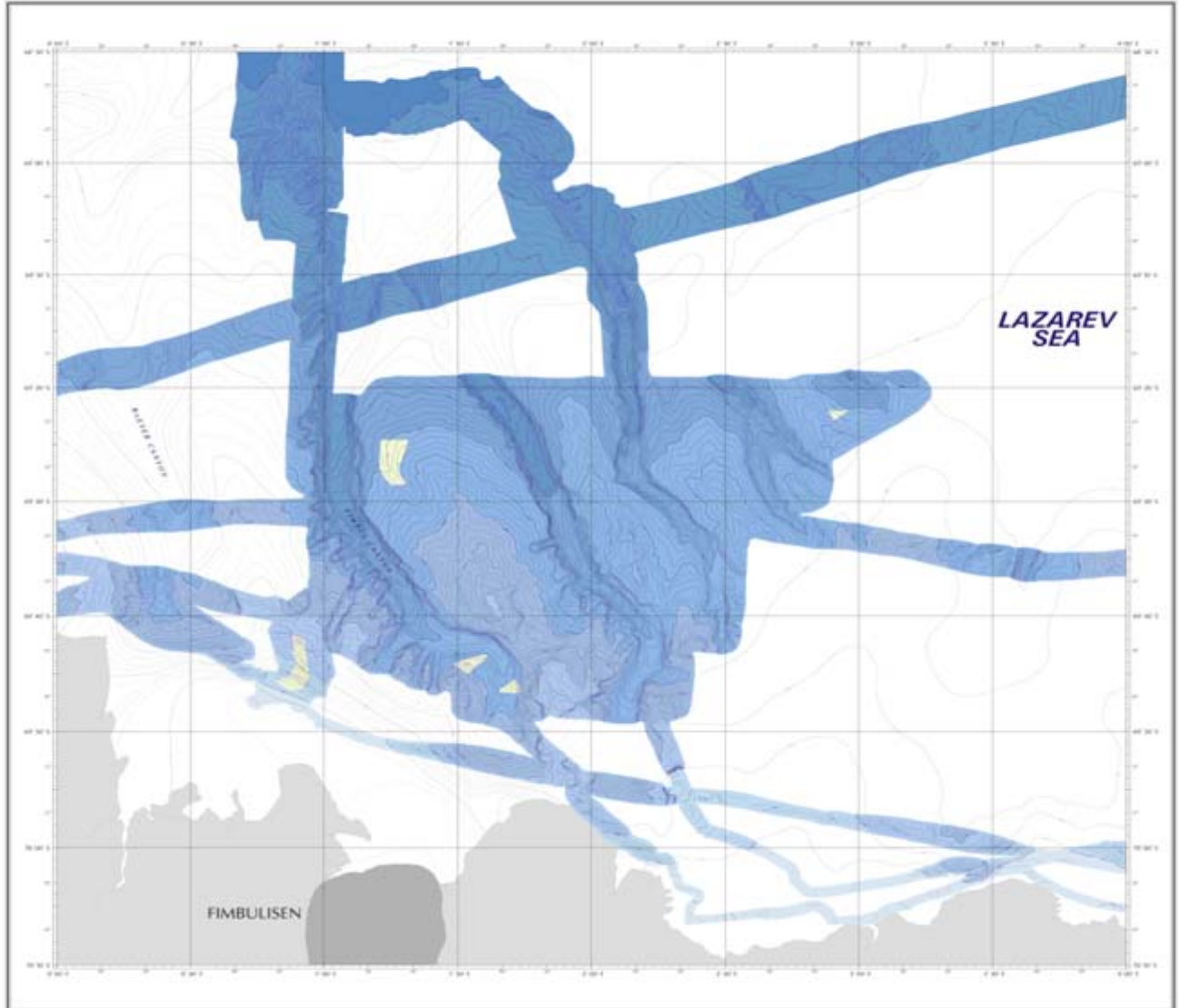
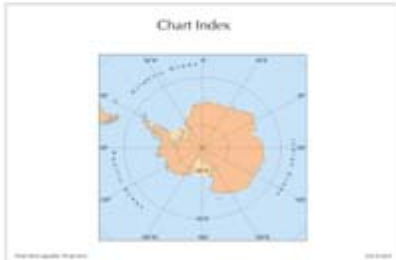
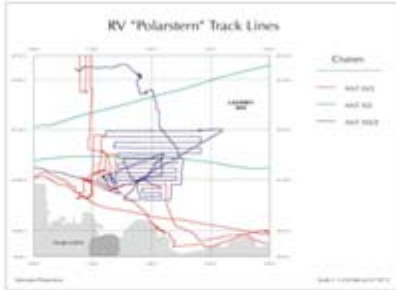
1. International Hydrographic Association (IHO) (2008) *International Hydrographic Association (IHO) S-44 Bathymetric Data Specifications*. Washington, DC: International Hydrographic Association.

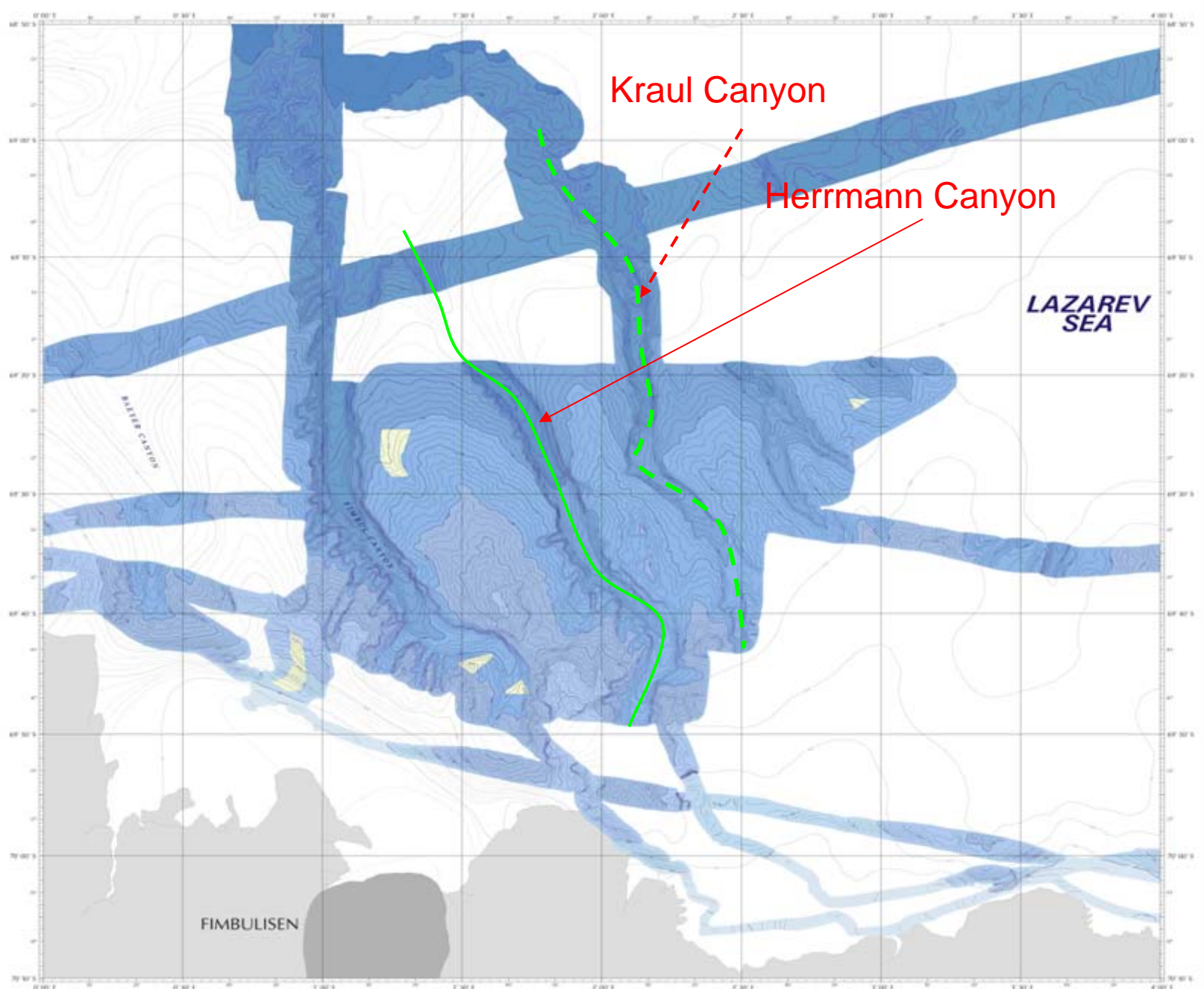
2. International Hydrographic Association (IHO) (2008) *International Hydrographic Association (IHO) S-44 Bathymetric Data Specifications*. Washington, DC: International Hydrographic Association.

3. International Hydrographic Association (IHO) (2008) *International Hydrographic Association (IHO) S-44 Bathymetric Data Specifications*. Washington, DC: International Hydrographic Association.

4. International Hydrographic Association (IHO) (2008) *International Hydrographic Association (IHO) S-44 Bathymetric Data Specifications*. Washington, DC: International Hydrographic Association.

5. International Hydrographic Association (IHO) (2008) *International Hydrographic Association (IHO) S-44 Bathymetric Data Specifications*. Washington, DC: International Hydrographic Association.





Kraul Canyon

Herrmann Canyon

LAZAREV SEA

FIMBULISEN

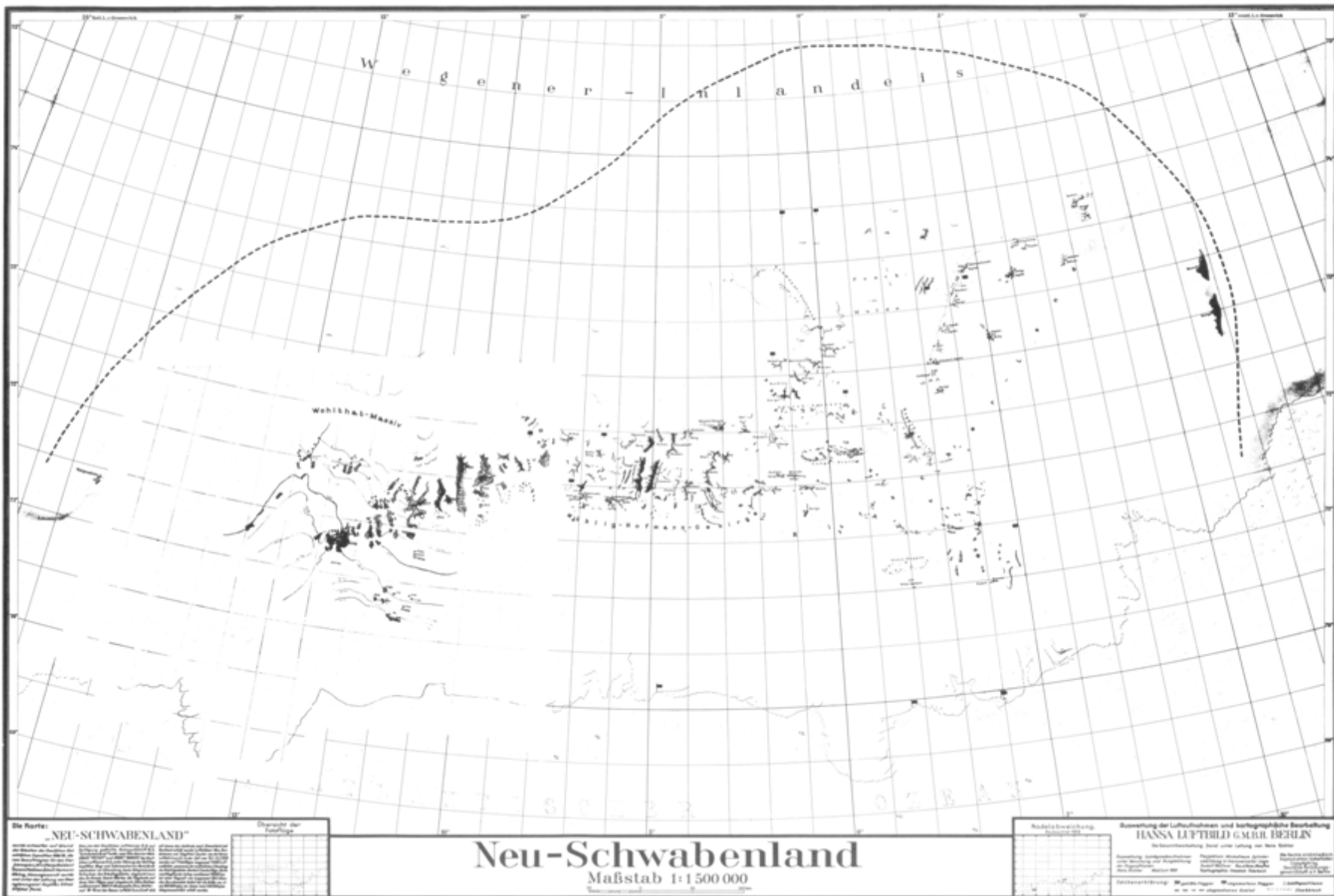
Übersichtstafel

von dem Arbeitsgebiet

der Deutschen Antarktischen Expedition 1938-39

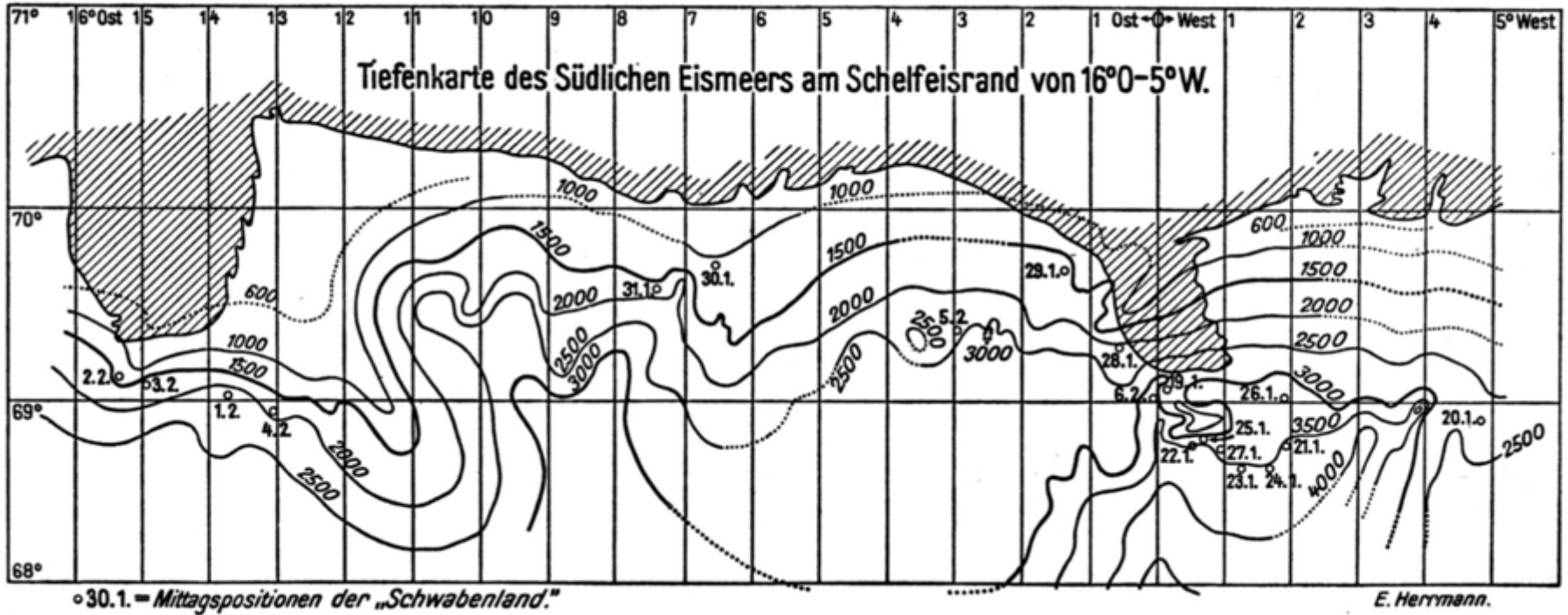
Ans. 4. Hydro. von 1939, VIII, 10. Aufl.

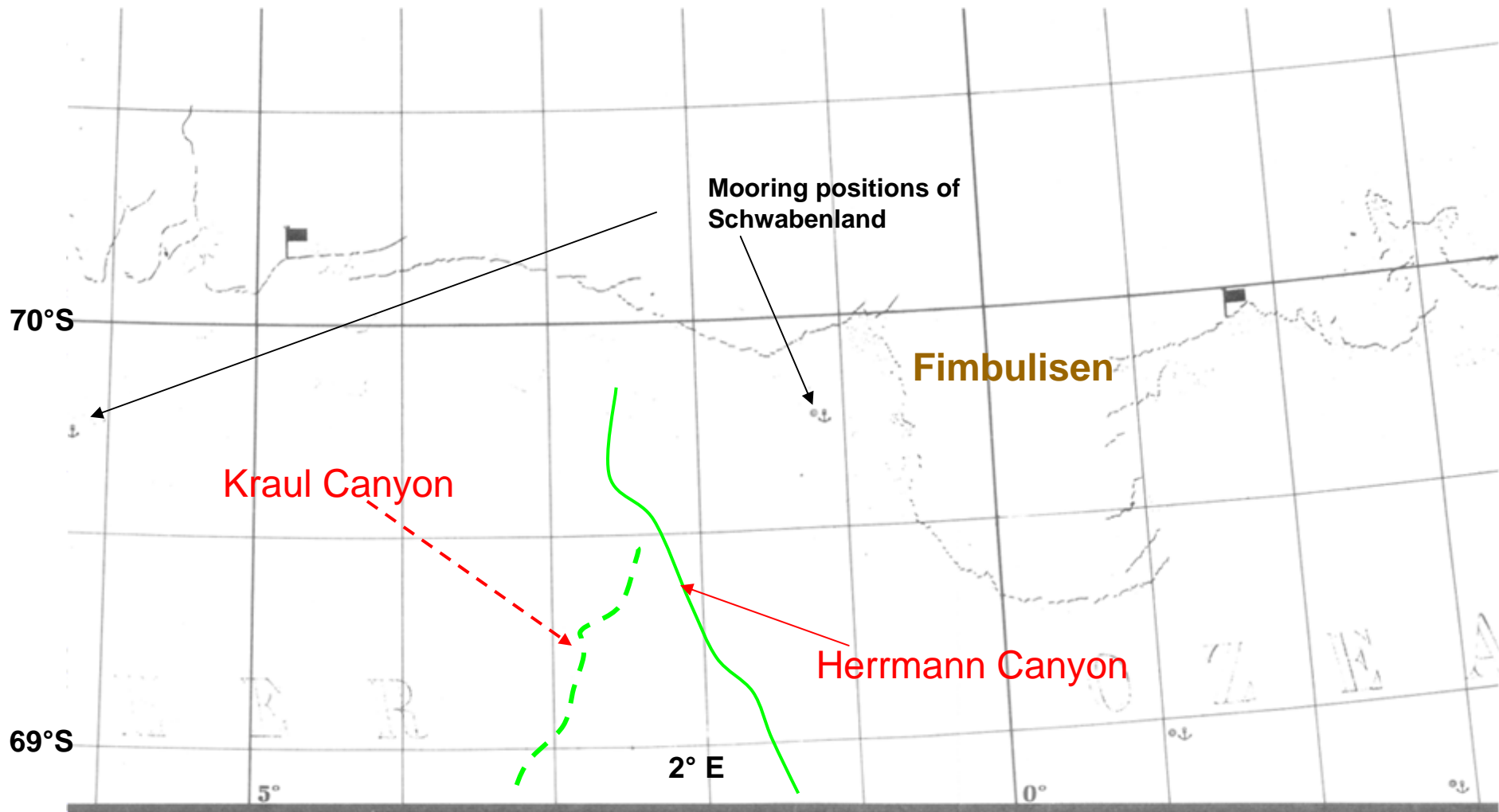
Antarctica



Auf 1 : 2 000 000 verteilte Wiegandkarte der von A. RITSCHER um 1930 erstellten und bisher un veröffentlichten „Übersichtstafel von dem Arbeitsgebiet der Deutschen Antarktischen Expedition 1938-39, Neu-Schwabenland 1 : 1 500 000“ (vgl. Karte 1)

Bathymetric Chart compiled by E. Herrmann based on „Schwabenland“ data





chwabenland