

UNDERSEA FEATURE NAME PROPOSAL

Note: The boxes will expand as you fill the form.

|                |               |               |                         |
|----------------|---------------|---------------|-------------------------|
| Name Proposed: | CAI WEI GUYOT | Ocean or Sea: | Northwest Pacific Ocean |
|----------------|---------------|---------------|-------------------------|

|   |      |         |                  |                |                   |                           |
|---|------|---------|------------------|----------------|-------------------|---------------------------|
| Geometry that best defines the feature (Yes/No) : |      |         |                  |                |                   |                           |
| Point   | Line | Polygon | Multiple Point s | Multiple lines | Multiple Polygons | Combination of geometries |
|   |      | Yes     |                  |                |                   |                           |

\* *Geometry should be clearly distinguished when providing the coordinates below.*

|              | Lat. (e.g. 63° 32.6' N) | Long. (e.g. 046° 21.3' W) |
|--------------|-------------------------|---------------------------|
| Coordinates: | 15°42.0'N (summit)      | 155°12.0'E (summit)       |
|              | 15°18.0'N (summit)      | 155°00.0'E (summit)       |
|              | 16°08.4'N (bottom)      | 155°03.6'E (bottom)       |
|              | 16°10.8'N               | 155°32.4'E                |
|              | 15°57.0'N               | 155°48.0'E                |
|              | 15°42.0'N               | 155°45.2'E                |
|              | 15°10.2'N               | 155°19.2'E                |
|              | 15°03.0'N               | 154°57.0'E                |
|              | 15°13.7'N               | 154°43.8'E                |
|              | 15°43.8'N               | 154°40.8'E                |

|                      |                 |       |                  |              |
|----------------------|-----------------|-------|------------------|--------------|
| Feature Description: | Maximum Depth:  | 5895m | Steepness :      | 0.92°        |
|                      | Minimum Depth : | 1335m | Shape :          | Oval         |
|                      | Total Relief :  | 4560m | Dimension/Size : | 136km × 95km |

|                      |  |
|----------------------|--|
| Associated Features: | CAI WEI GUYOT develops two guyots. The northeast plateau is relatively large with the minimum depth 1335m. The southwest plateau is relatively small with the minimum depth 1636m. |
|----------------------|--|

|                       |                             |            |
|-----------------------|-----------------------------|------------|
| Chart/Map References: | Shown Named on Map/Chart:   |            |
|                       | Shown Unnamed on Map/Chart: | GEBCO 5.06 |
|                       | Within Area of Map/Chart:   |            |

|   |   |                   |
|---|---|-------------------|
| Reason for Choice of Name (if a person, state how associated with the feature to be named): | CAI WEI is the title of one of the best poems in SHI JING·XIAO YA (an ancient book of poems) , written by the soldiers of Zhou Dynasty around 1000 years BC. This poem described the hardships of life and homesickness feelings of soldiers. The poem lively described the natural scenery of the crop WEI (Osmund) from growth to harvest year after year. The description of pure and simple thoughts of the soldiers allowed this poetry full of vitality and appeal. CAI WEI GUYOT is named after the shape of pits scattered on the hill just like girls collecting food up the mountain. |                   |
| Discovery Facts:  | Discovery Date:   | May 1997          |
|   | Discoverer (Individual, Ship):  | R/V Haiyang Sihao |

|   |  |                   |
|---|--|-------------------|
| Supporting Survey Data, including Track Controls: | Date of Survey:  | May 1997          |
|   | Survey Ship:   | R/V Haiyang Sihao |
|   | Sounding Equipment:  | SeaBeam2112.36    |
|   | Type of Navigation:  | Oministar WAD GPS |
|   | Estimated Horizontal Accuracy (nm):  | 0.008~0.027nm     |
|   | Survey Track Spacing:  | 1.5'              |
|   | Supporting material can be submitted as Annex in analog or digital form. See Attachments |                   |

|              |                           |   |
|--------------|---------------------------|---|
| Proposer(s): | Name(s):                  | Zhanhai ZHANG   |
|              | Date:                     | 12 August 2011  |
|              | E-mail:                   | heyunxu@hotmail.com   |
|              | Organization and Address: | State Oceanic Administration, China<br>No.1 Fuxingmenwai Ave. Beijing |

|          |  |
|----------|--|
| Remarks: |  |
|----------|--|

Attachments:

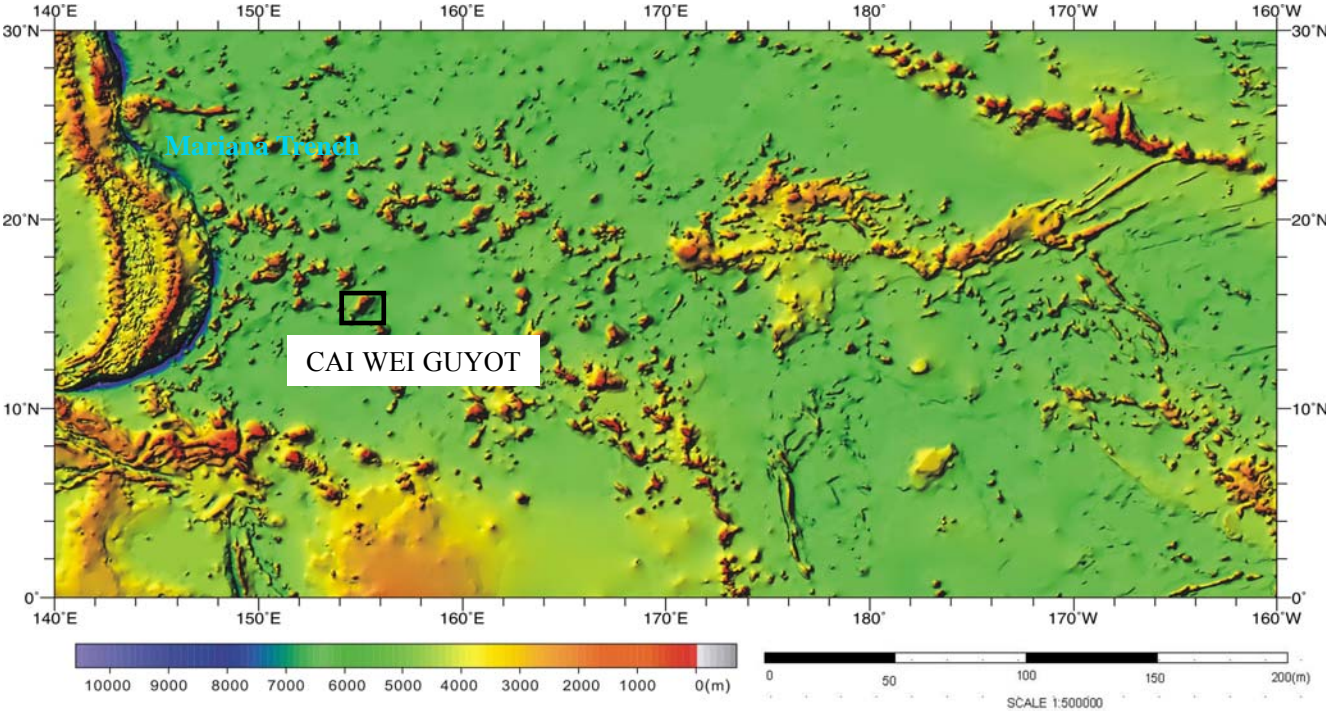


Fig.1 Index map showing the location of the CAI WEI GUYOT

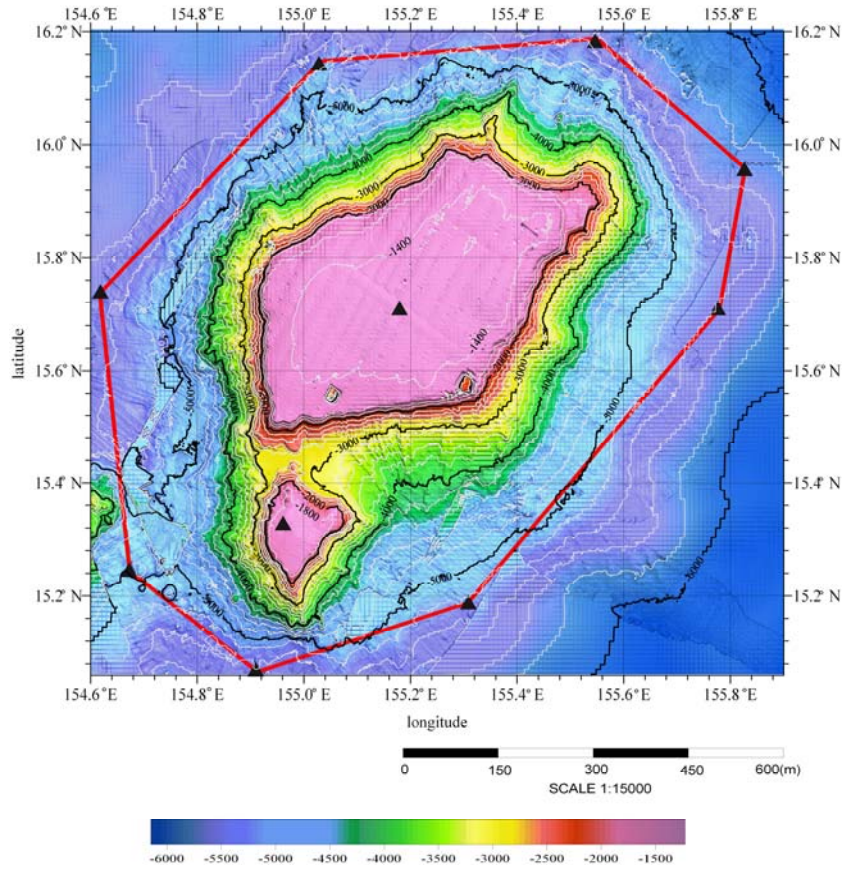


Fig.2 Contour map of the CAI WEI GUYOT. (Contours are in 200m)

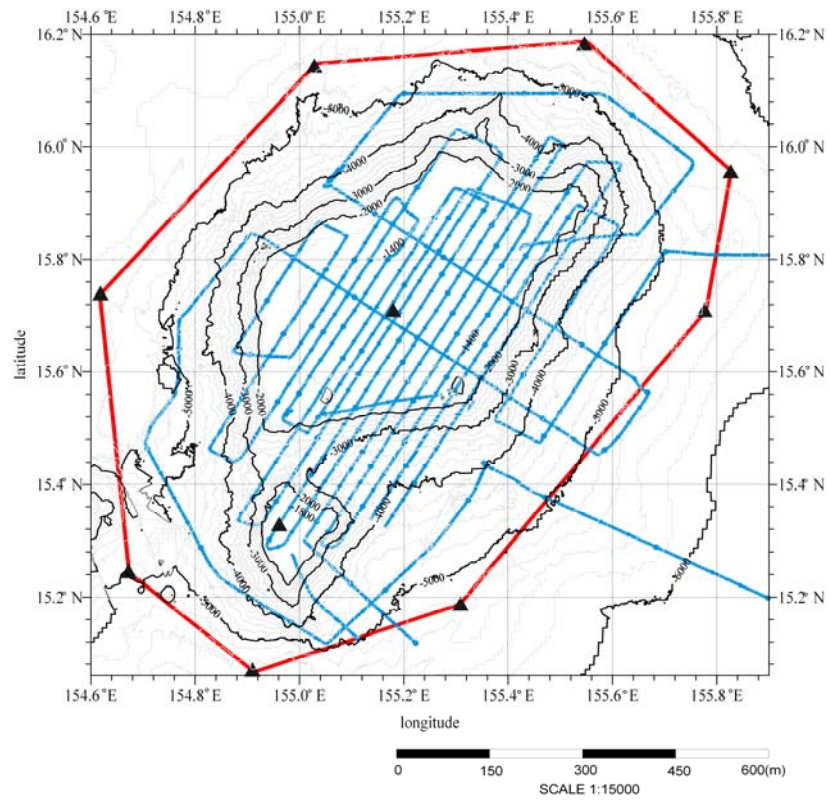


Fig.3 Bathymetric map of the CAI WEI GUYOT, showing track lines. (Contours are in 200m)

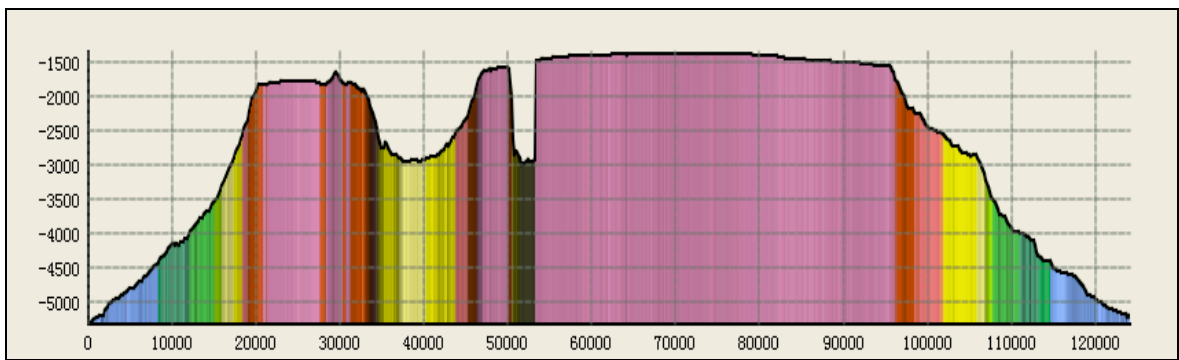
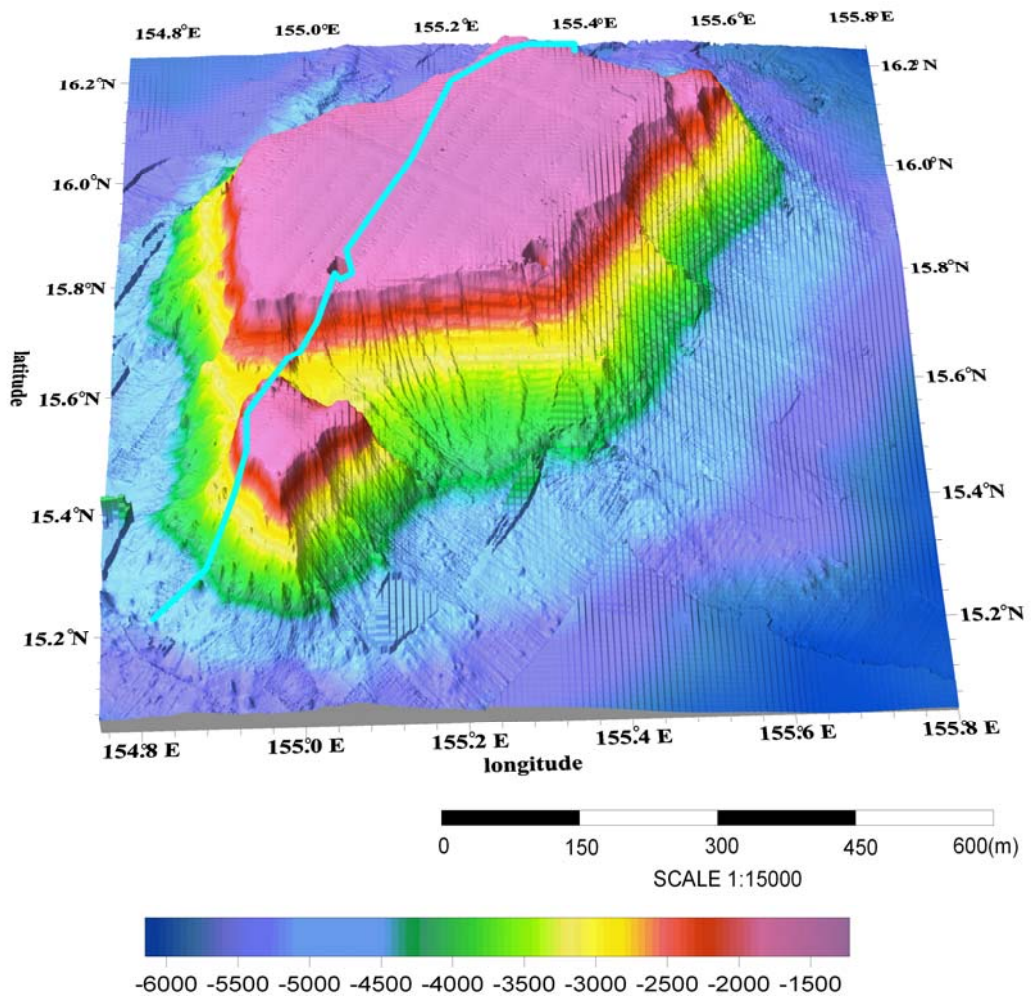


Fig.4 3-D bathymetric map and profile of the CAI WEI GUYOT.