

UNDERSEA FEATURE NAME PROPOSAL

Note: The boxes will expand as you fill the form.

Name Proposed:	XU FU SEAMOUNTS	Ocean or Sea:	Northwest Pacific Ocean
----------------	-----------------	---------------	-------------------------

Geometry that best defines the feature (Yes/No) :						
Point	Line	Polygon	Multiple Point s	Multiple lines	Multiple Polygons	Combination of geometries
		Yes				

\* *Geometry should be clearly distinguished when providing the coordinates below.*

	Lat. (e.g. 63° 32.6' N)	Long. (e.g. 046° 21.3' W)
Coordinates:	20°00.6'N (summit)	157°26.4'E (summit)
	19°57.8'N (summit)	157°27.3'E (summit)
	19°46.3'N (summit)	157°22.8'E (summit)
	19°41.5'N (summit)	157°43.0'E (summit)
	19°32.3'N (summit)	157°56.0'E (summit)
	19°12.3'N (summit)	158°14.0'E (summit)
	19°10.8'N (summit)	158°15.3'E (summit)
	19°50.3'N (bottom)	157°13.8'E (bottom)
	20°01.0'N	157°15.0'E
	20°11.3'N	157°21.4'E
	20°15.8'N	157°27.4'E
	20°01.5'N	157°35.1'E
	19°53.7'N	157°34.4'E
	19°46.6'N	158°03.9'E
	19°27.6'N	158°13.6'E
	19°17.6'N	158°25.7'E
	19°06.1'N	158°25.1'E
	19°28.6'N	157°32.8'E
	19°35.3'N	157°18.0'E
	19°12.4'N	158°00.9'E
19°01.4'N	158°14.1'E	
19°49.2'N	157°50.7'E	
19°38.6'N	158°07.3'E	
19°33.6'N	157°30.8'E	
20°12.5'N	157°31.5'E	

Feature Description:	Maximum Depth:	5500m	Steepness :	8° -11°
	Minimum Depth :	1200m	Shape :	Oval
	Total Relief :	4300m	Dimension/Size :	180km × 70km

Associated Features:	Belong to Marcus-Wake Ridge, the northeast side close to Lamont Seamount, with the northwest-southeast extension.
----------------------	-------------------------------------------------------------------------------------------------------------------

Chart/Map References:	Shown Named on Map/Chart:	
	Shown Unnamed on Map/Chart:	GEBCO 5.06
	Within Area of Map/Chart:	

Reason for Choice of Name (if a person, state how associated with the feature to be named):	XU FU is a famous Taoist in the Qin Dynasty of 210 years BC. He was very erudite and had good knowledge of medicine, astronomy, navigation, etc. It is said that XU FU was sent by the first Emperor of Qin to lead thousands of people out to sea, looking for the elixir of life for the Emperor, and never returned. Meanwhile, his reputation is fairly high as a doctor among the people in coastal areas of ancient China. In memory of this famous person, people named their villages and temples after him. XU FU SEAMOUNTS is named after the famous person, indicating that as early as 210 years BC, the Chinese people began to launch navigation activities in an organized manner. XU FU was an outstanding representative of them.
---------------------------------------------------------------------------------------------	----------------------------------------------------------------------------------------------------------------------------------------------------------------------------------------------------------------------------------------------------------------------------------------------------------------------------------------------------------------------------------------------------------------------------------------------------------------------------------------------------------------------------------------------------------------------------------------------------------------------------------------------------------------------------------------------------------------------------------------------------

Discovery Facts:	Discovery Date:	Aug.2004
	Discoverer (Individual, Ship):	R/V Dayang Yihao

Supporting Survey Data, including Track Controls:	Date of Survey:	Aug.2004
	Survey Ship:	R/V Dayang Yihao
	Sounding Equipment:	Norwegian EM120 multi-beam sounding system
	Type of Navigation:	SEASTAR 3100LRS WAD GPS
	Estimated Horizontal Accuracy (nm):	0.0053nm
	Survey Track Spacing:	8'
	Supporting material can be submitted as Annex in analog or digital form. See Attachments	

Proposer(s):	Name(s):	Zhanhai ZHANG
	Date:	12 August 2011
	E-mail:	heyunxu@hotmail.com
	Organization and Address:	State Oceanic Administration, China No.1 Fuxingmenwai Ave. Beijing

Remarks:	
----------	--

Attachments:

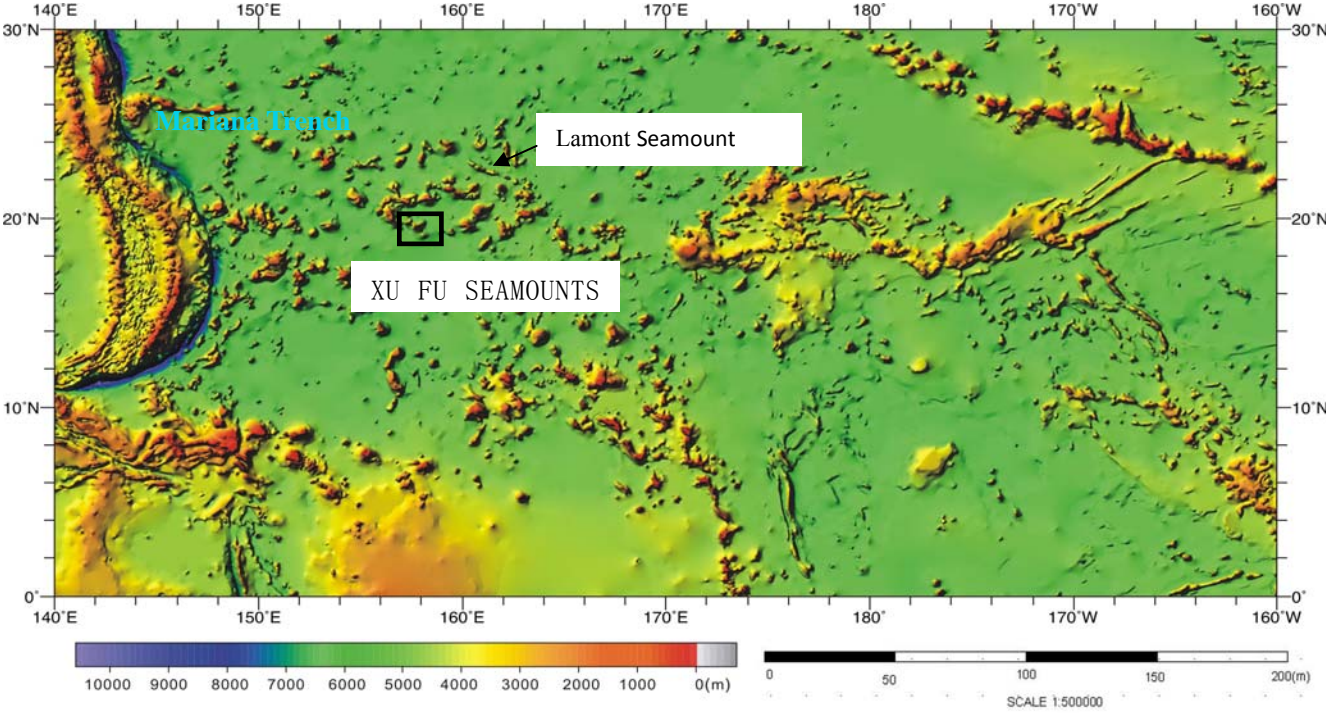


Fig.1 Index map showing the location of the XU FU SEAMOUNTS

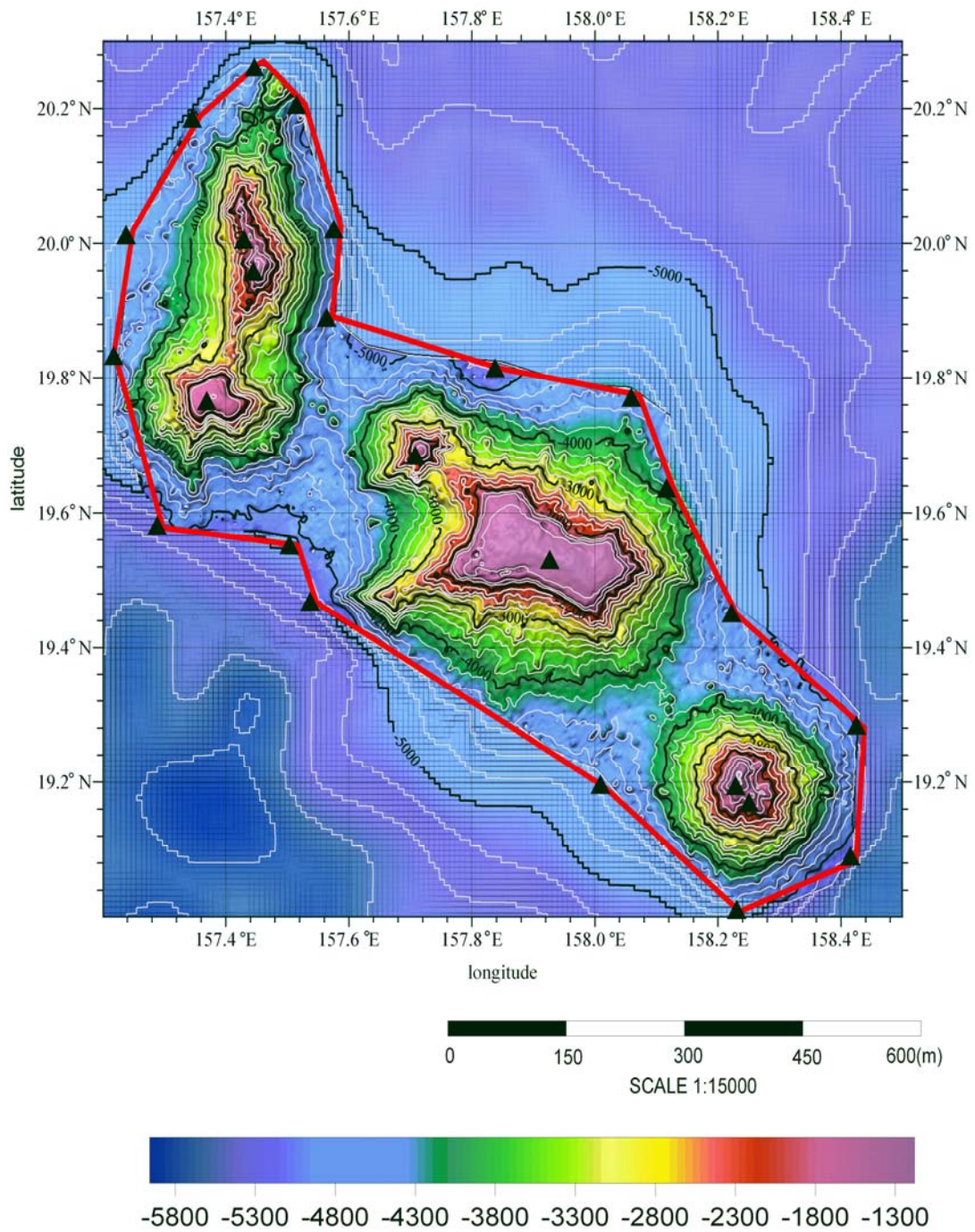


Fig.2 Bathymetric map of the XU FU SEAMOUNTS. (Contours are in 200 m)

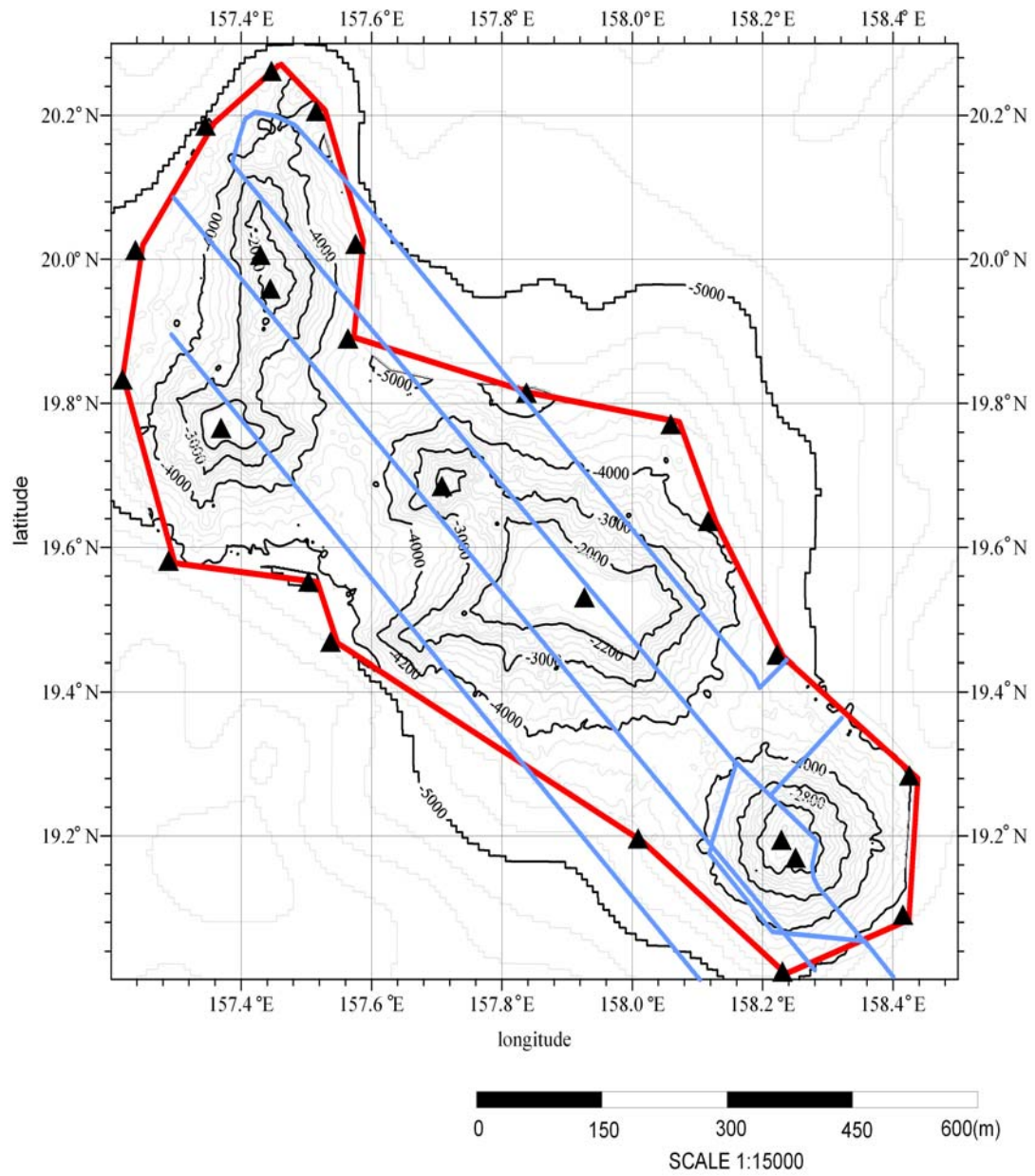


Fig.3 Bathymetric map of the XU FU SEAMOUNTS, showing track lines. (Contours are in 200 m)

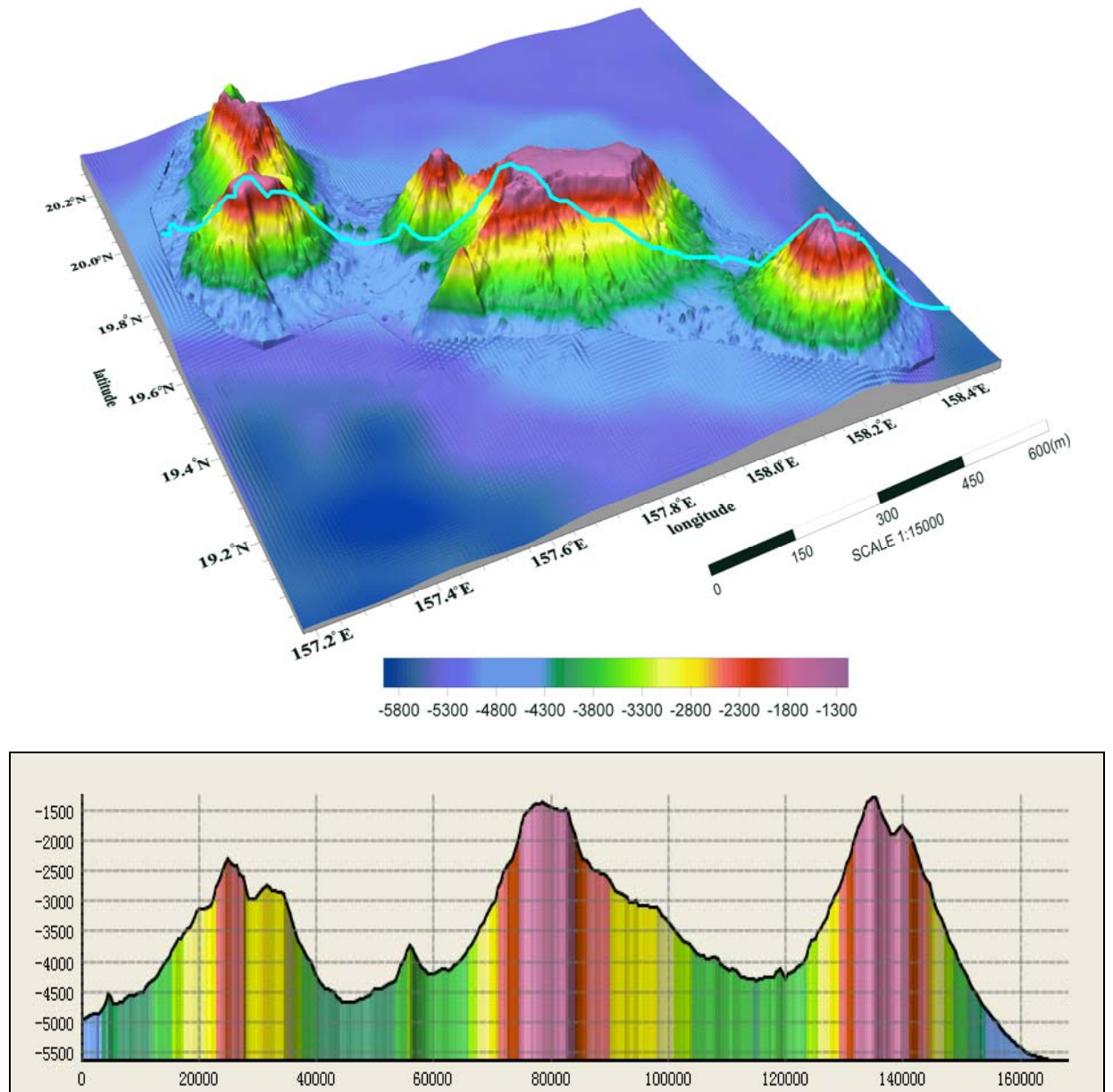


Fig.4 3-D bathymetric map and profile of the XU FU SEAMOUNTS