

UNDERSEA FEATURE NAME PROPOSAL
(Sea NOTE overleaf)

Note: The boxes will expand as you fill the form.

Name Proposed:	Ssangdungi Hills	Ocean or Sea:	South Pacific Ocean
-----------------------	-------------------------	----------------------	----------------------------

Geometry that best defines the feature (Yes/No) :						
Point	Line	Polygon	Multiple points	Multiple lines*	Multiple polygons*	Combination of geometries*
			Yes			

* Geometry should be clearly distinguished when providing the coordinates below.

Coordinate:		Lat.	Long.
	(A)	67°16.1'S	179°03.1'W
	(B)	67°16.1'S	179°04.2'W

Feature Description :	(A)	Maximum Depth:	3,655m	Steepness :	14.2°
	(B)		3,575m		10.8°
	(A)	Minimum Depth :	3,402m	Shape :	Twin Cones
	(B)		3,385m		
	(A)	Total Relief :	253m	Dimension/Size :	0.6 x 2.0 km
	(B)		190m		0.7 x 2.0 km

Associated Features:	
-----------------------------	--

Chart/Map References:	Shown Named on Map/Chart:	
	Shown Unnamed on Map/Chart:	
	Within Area of Map/Chart:	

Reason for Choice of Name (if a person, state how associated with the feature to be named):	SSangdungi is a Korean word for "twin." The name of Ssangdungi Hills is derived from the shapes of two newly discovered seafloor peaks on a single platform, which were formed nearly identically.
----------------------------------------------------------------------------------------------------	-----------------------------------------------------------------------------------------------------------------------------------------------------------------------------------------------------------

Discovery Facts:	Discovery Date:	January 31, 2011
	Discoverer (Individual, Ship):	R/V ARAON

Supporting Survey Data, including Track Controls:	Date of Survey:	January 31, 2011
	Survey Ship:	R/V ARAON
	Sounding Equipment:	MBES Simrad EM 122
	Type of Navigation:	GPS
	Estimated Horizontal Accuracy (nm):	Beam angle 1°
	Survey Track Spacing:	-
	Supporting material can be submitted as Annex in analog or digital form.	

Proposer(s):	Name(s):	Korean Committee on Geographical Names, Republic of Korea
	Date:	August 11, 2011
	E-mail:	infokhoa@korea.kr

	Organization and Address:	365 Seohae-Daero, Jung-gu, Incheon 400-800, Republic of Korea
	Concurrer (name, e-mail, organization and address):	

Remarks:	
-----------------	--

NOTE : This form should be forwarded, when completed :

- a) **If the undersea feature is located inside the external limit of the territorial sea :-**
to your "National Authority for Approval of Undersea Feature Names" (see page 2-9) or, if this does not exist or is not known, either to the IHB or to the IOC (see addresses below);
- b) **If at least 50 % of the undersea feature is located outside the external limits of the territorial sea :-**
to the IHB or to the IOC, at the following addresses :

International Hydrographic Bureau (IHB) 4, Quai Antoine 1er B.P. 445 MC 98011 MONACO CEDEX Principality of MONACO Fax: +377 93 10 81 40 E-mail: info@ihb.mc	Intergovernmental Oceanographic Commission (IOC) UNESCO Place de Fontenoy 75700 PARIS France Fax: +33 1 45 68 58 12 E-mail: info@unesco.org
----------------------------------------------------------------------------------------------------------------------------------------------------------------------------------------------------------------	----------------------------------------------------------------------------------------------------------------------------------------------------------------------------------------------------

Ssangdungi Hills

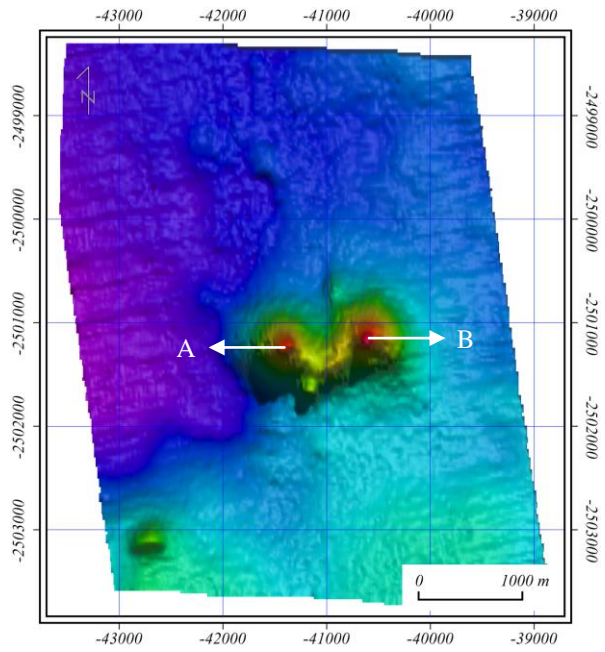


Fig.1. 2-D Bathymetric Contour map of the Ssangdungi Hills

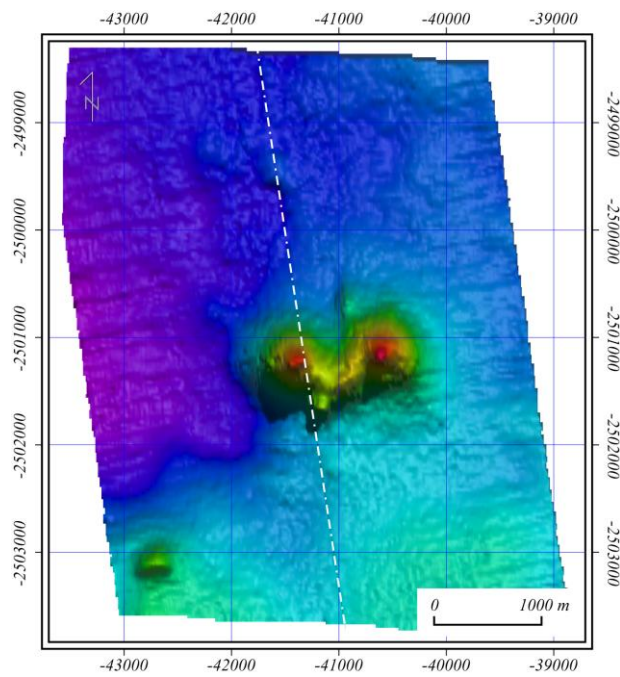


Fig.2. The track lines in Survey area

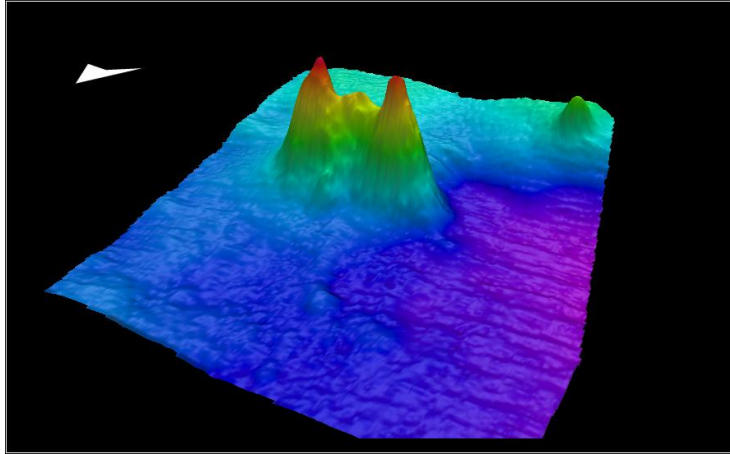


Fig.3. 3-D topographic map of the Ssangdungi Hills

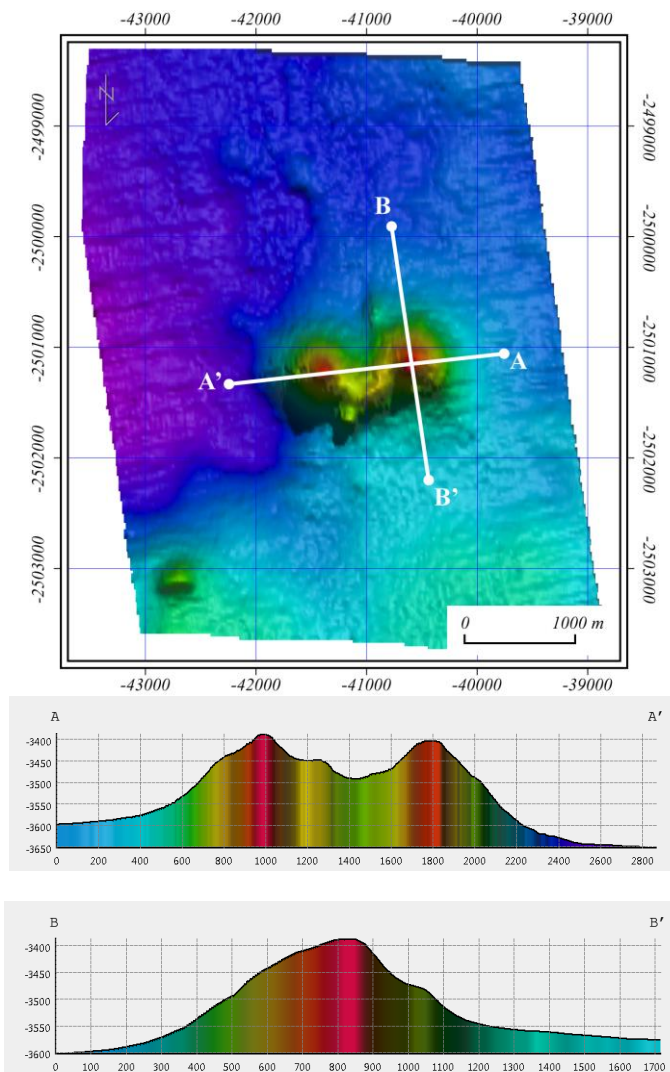


Fig.4. Profile across Ssangdungi Hills