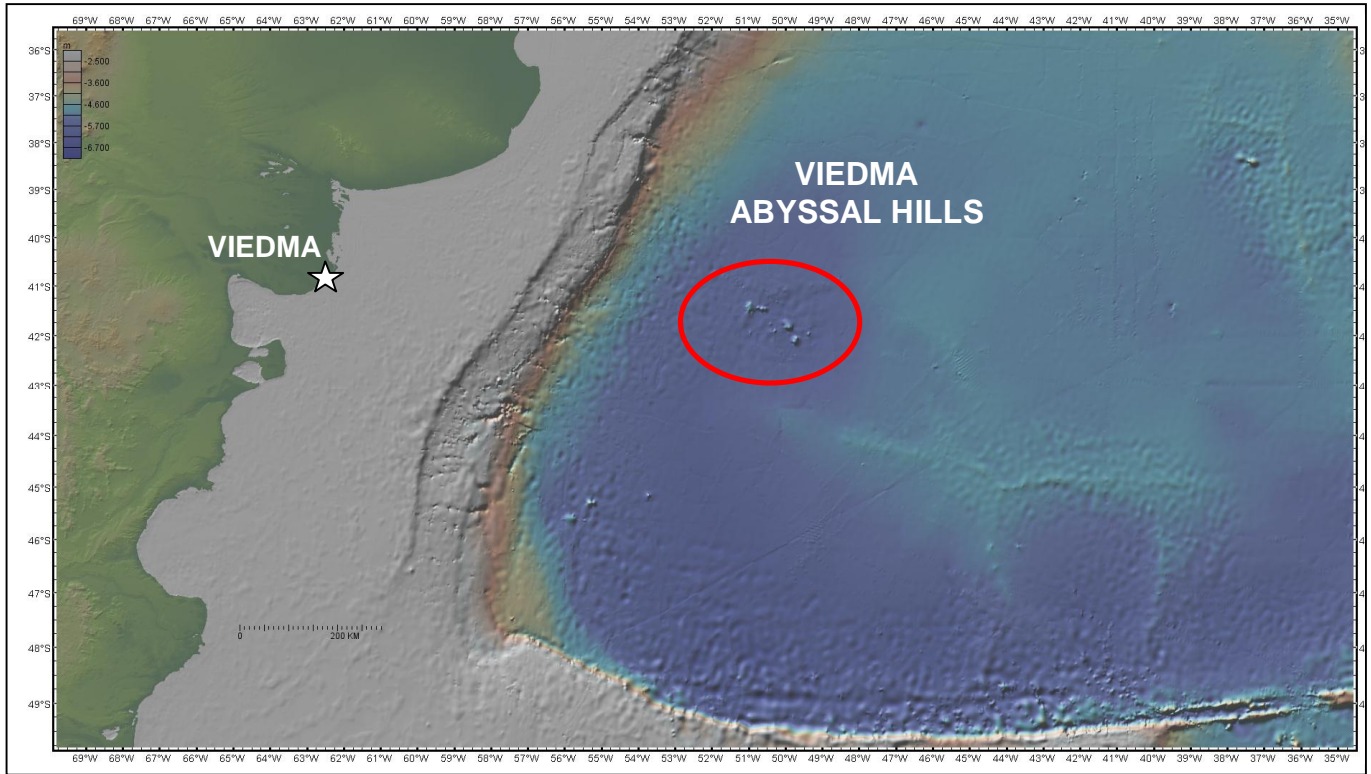
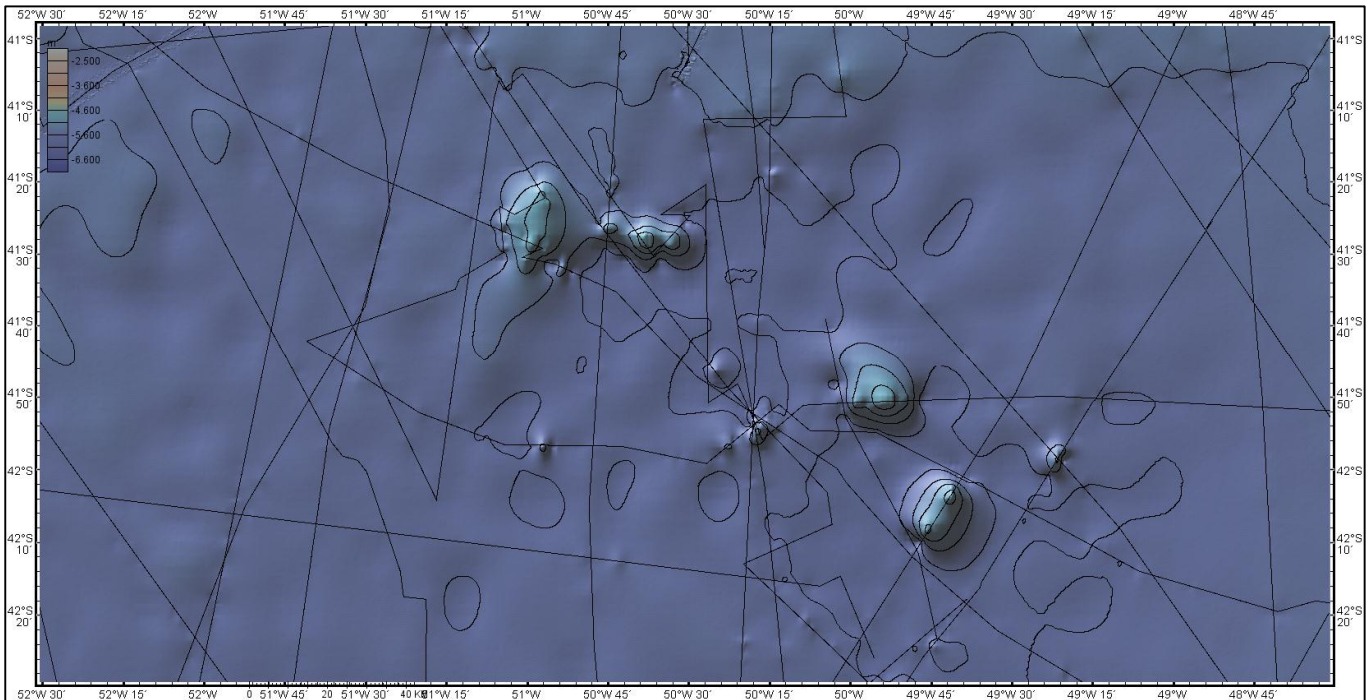


ANNEX TO VIEDMA ABYSSAL HILLS PROPOSAL FORM.

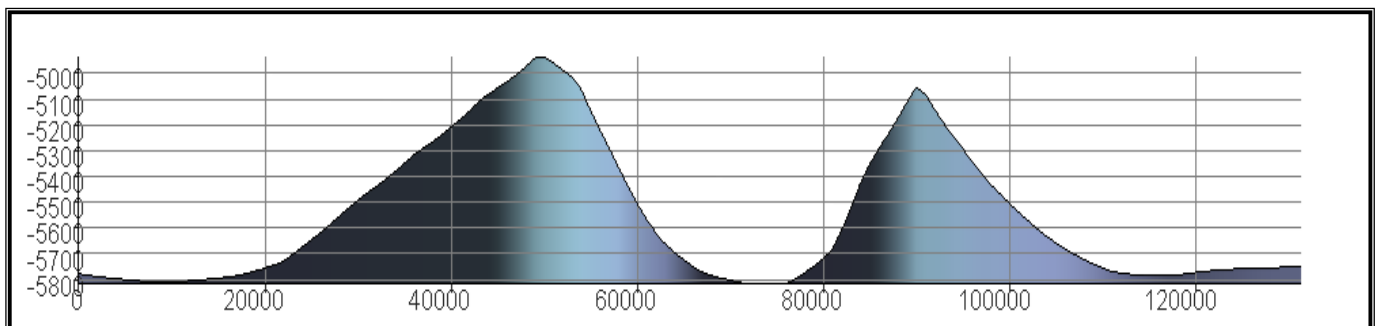
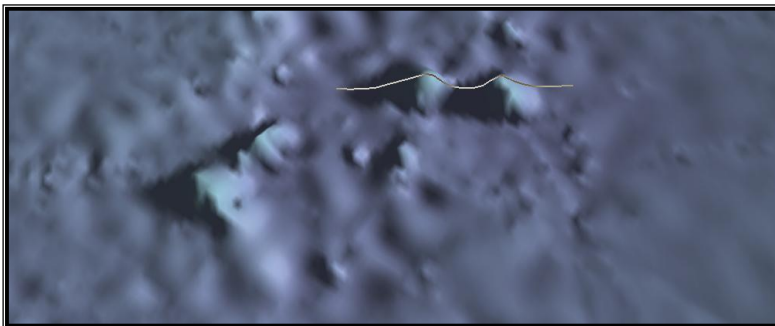
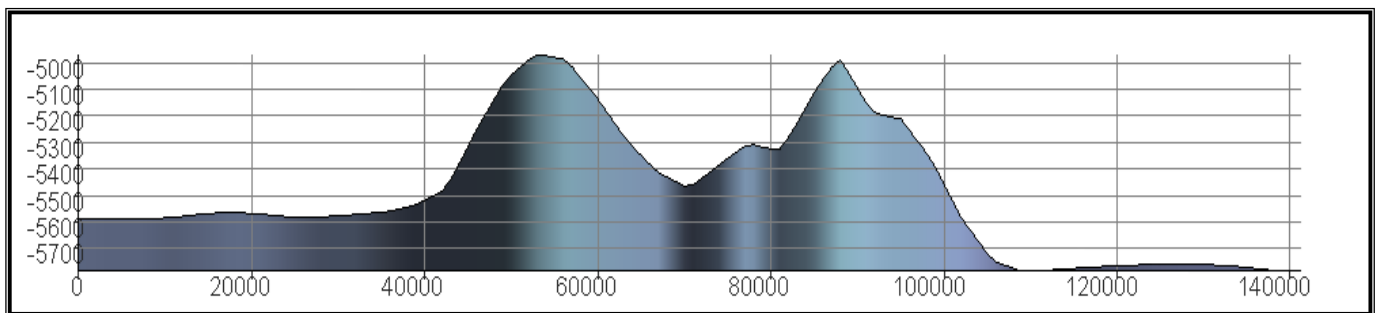
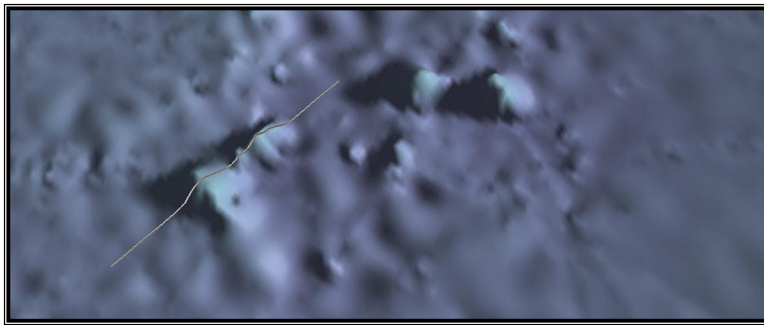
1. Location map:



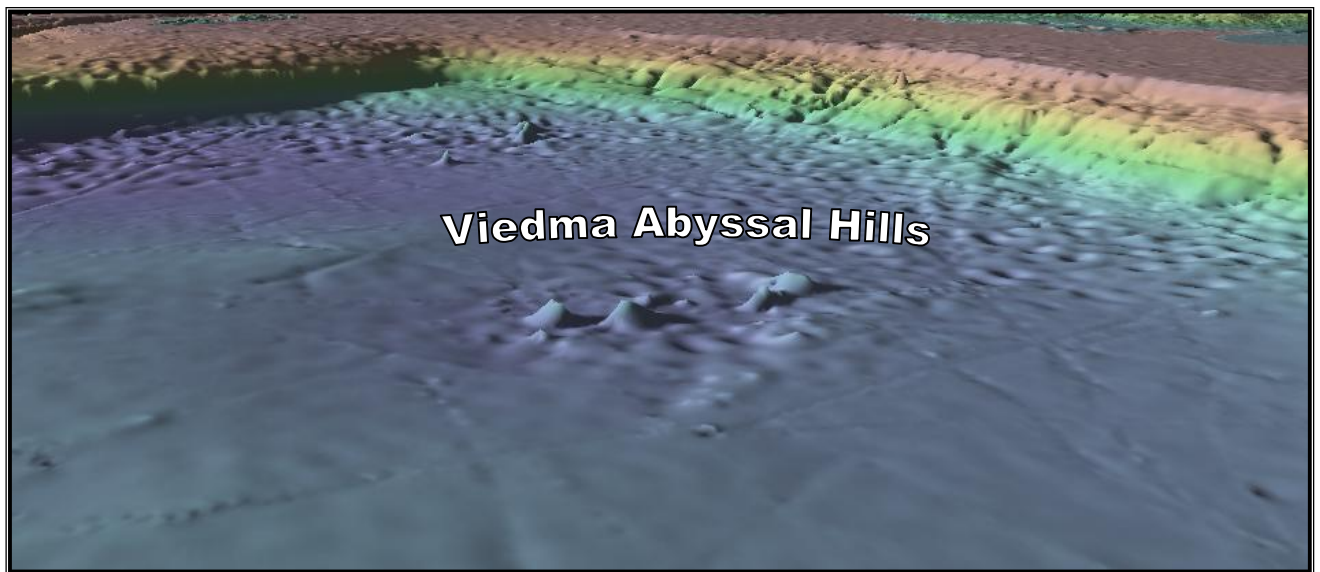
2. Bathymetric map: contour lines every 250m.



3. Bathymetric profiles:



4. 3D views:



Credits:

<http://www.geomapapp.org>

Ryan, W. B. F., et al. (2009), Global Multi-Resolution Topography synthesis, *Geochem. Geophys. Geosyst.*, 10, Q03014, doi:10.1029/2008GC002332.