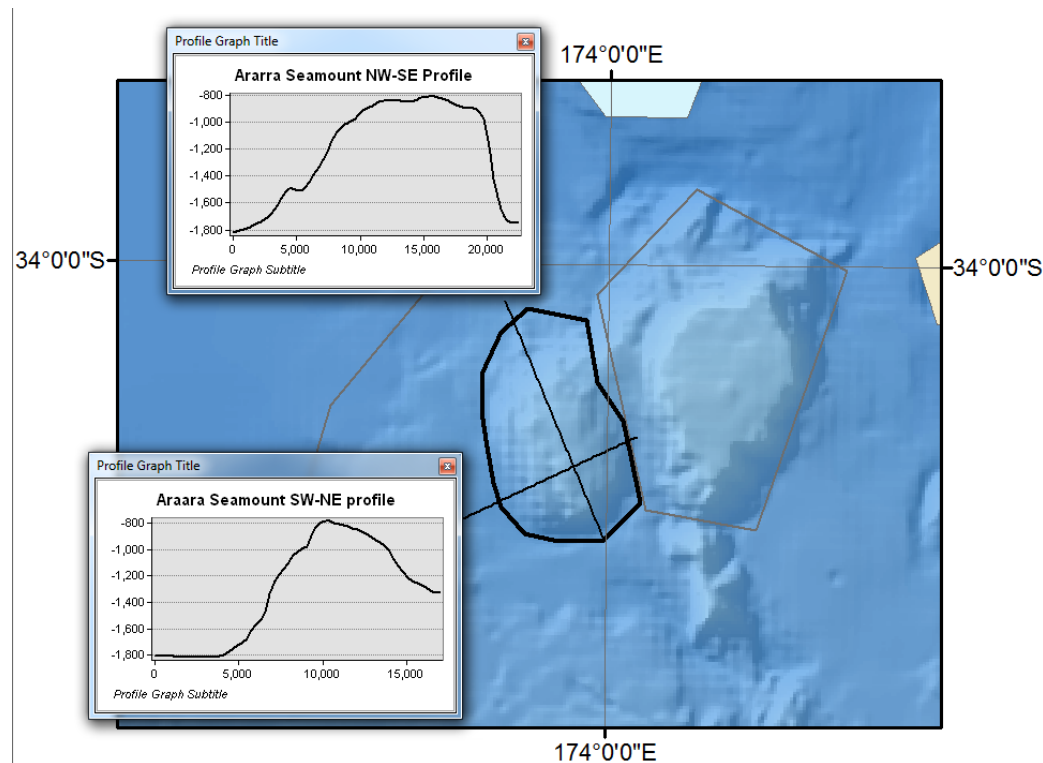


**Additional information / data provided by NZGB**

(re: e-mail from V. Stagpoole, dated 12 May 2016)

**Araara Seamount** – shapefile re-drawn because of new data. Note there has been a question on whether it is more than 1000 m high. The Summit height is 788 m and from the profiles (below) over half the base of the feature is at 1800m depth, although there is a shallower saddle to the adjacent feature.



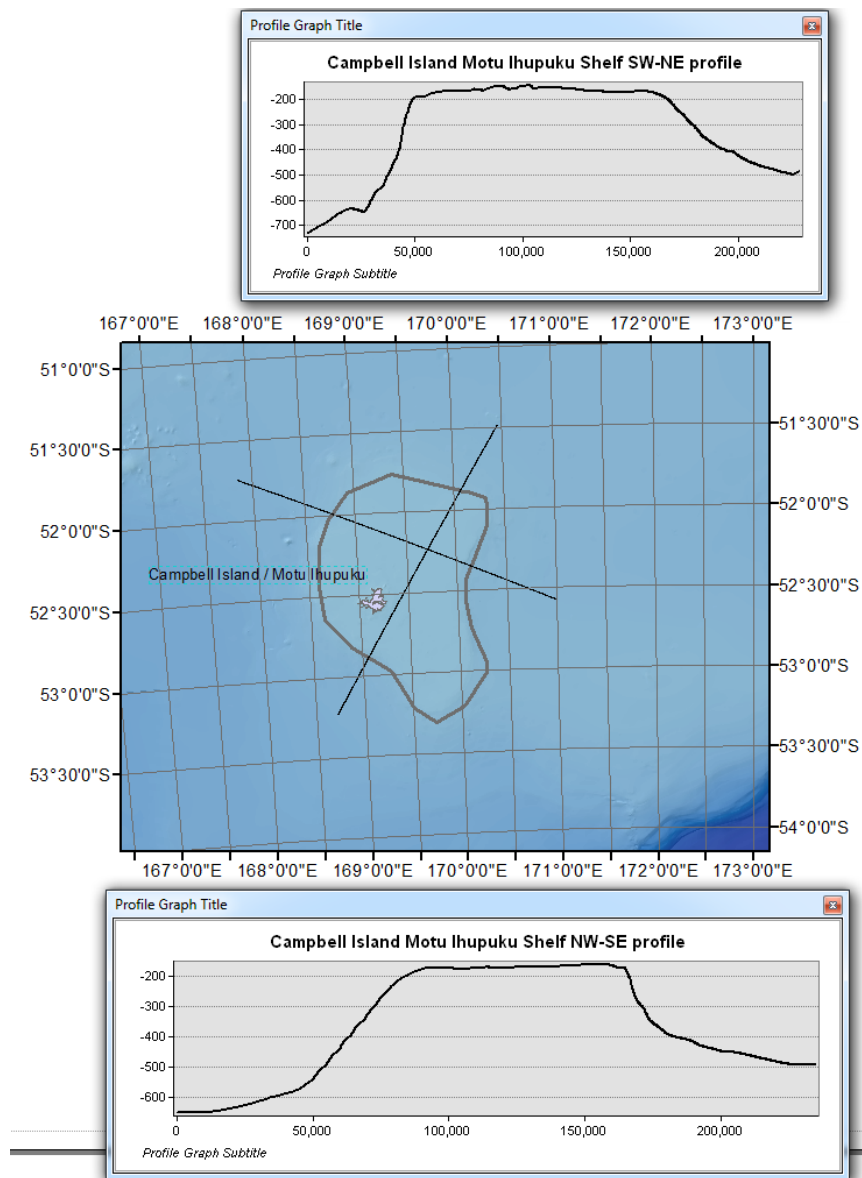
(Profile elevations and distances in metres)

**Bounty Channel** – shapefile re-drawn because better data is now available

**Bream Knolls** – This originally only had one of the knolls within the shapefile. It now has been corrected to include both knolls.

**Brodie Canyon** – shapefile re-drawn because better data is now available.

**Campbell Island / Motu Ihupuku Shelf** – Shapefile requested by Action SCUFN27/65. Yas wanted more information that you can see in the profiles below.



(Profile elevations and distances in metres)

**Hikurangi Channel** – shapefile re-drawn because better data is now available.

**Iselin Seamount** – I am awaiting a new compilation of data before updating info on this feature.

**Karitāne Channel** – shapefile re-drawn because better data is now available.

**Mokohīnau Canyon** – Shapefile requested by Action SCUFN27/65.

**Ōhena Knoll** – There was a question from Yas about extent of the Shapefile, but I can confirm that the shapefile is correct (location conflicted with Pūkākī Canyon).

**Paritū Trough** - Shapefile requested by Action SCUFN27/65 and after a question from Yas has been corrected to align with bottom of trough.

**Pūkākī Canyon** - Shapefile requested by Action SCUFN27/65. Review of this feature has resulted in changes to the Okains Canyon Shapefile.

**Pūkākī Seachannel** – In GEBCO gazetteer but with East-West coordinate transposition. A new shape file provided (there is not much data in this area and shape may change in the future with the collection of new information).

**Pūkākī Saddle** – Shapefile requested by Action SCUFN27/65.

**Pukekura Canyon** - Shapefile requested by Action SCUFN27/65 (also, name not in NZGB database yet).

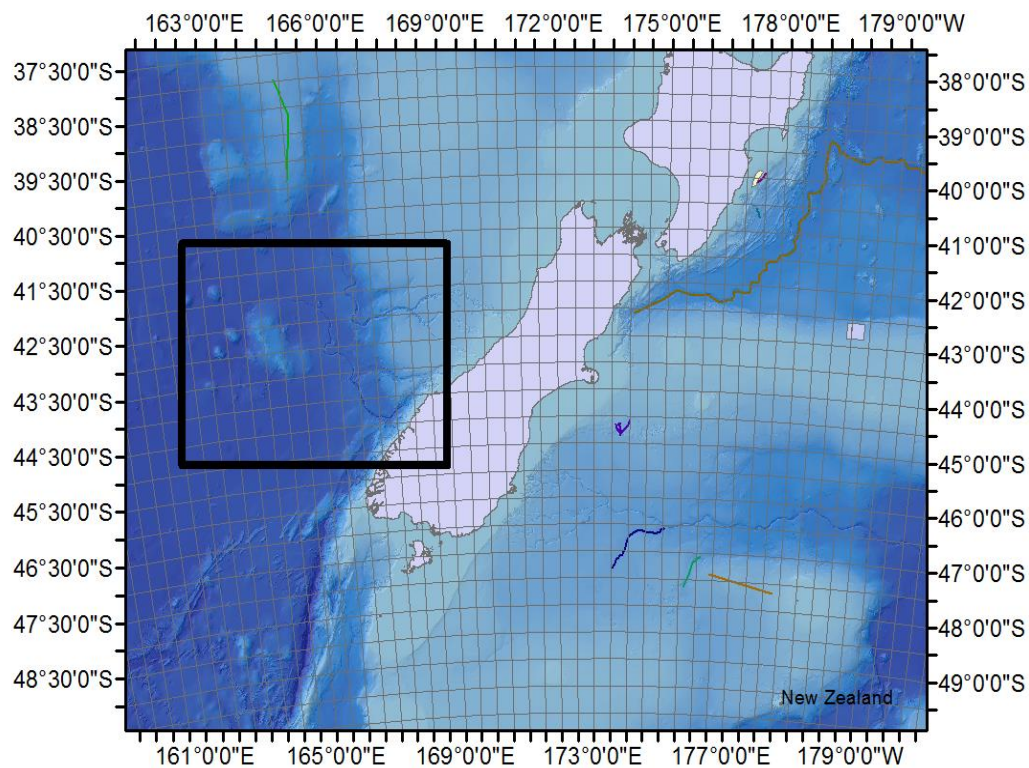
**Puketuroto / Hoopers Canyon** - Shapefile requested by Action SCUFN27/65.

**Puketuroto / Hoopers Channel** - Shapefile requested by Action SCUFN27/65.

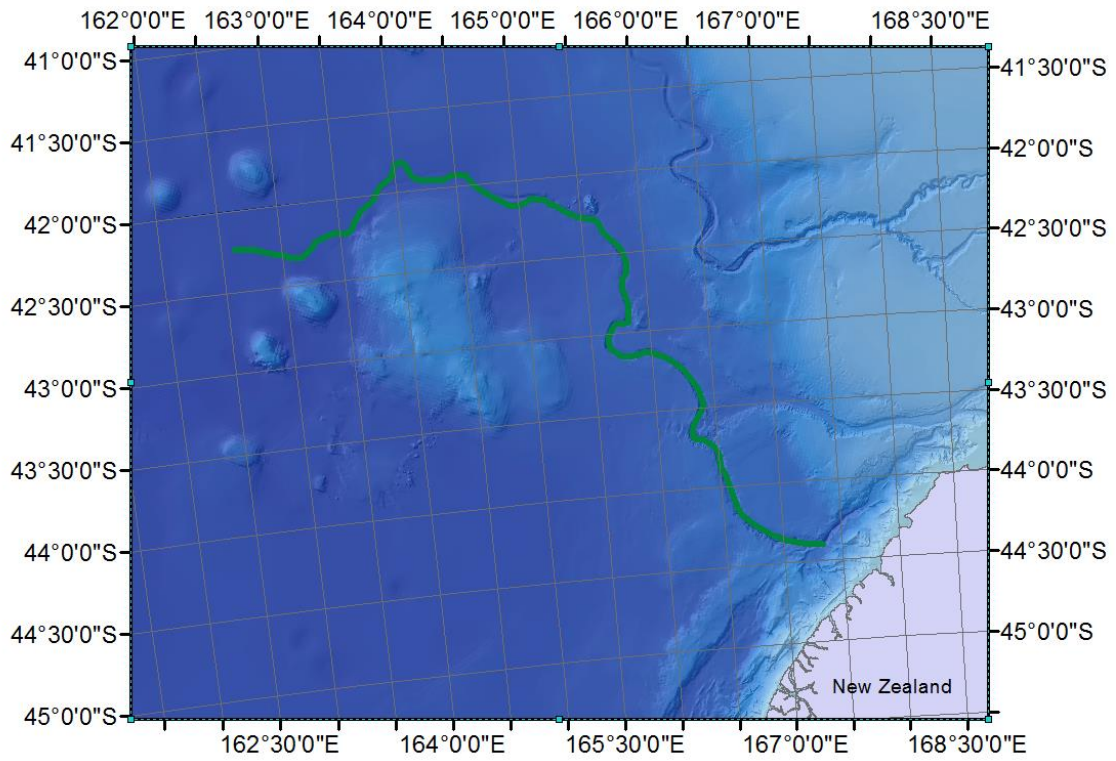
**Taitimu / Caswell Ridge** - Shapefile requested by Action SCUFN27/65.

**Wanganella Bank** - Shapefile was in wrong location – corrected.

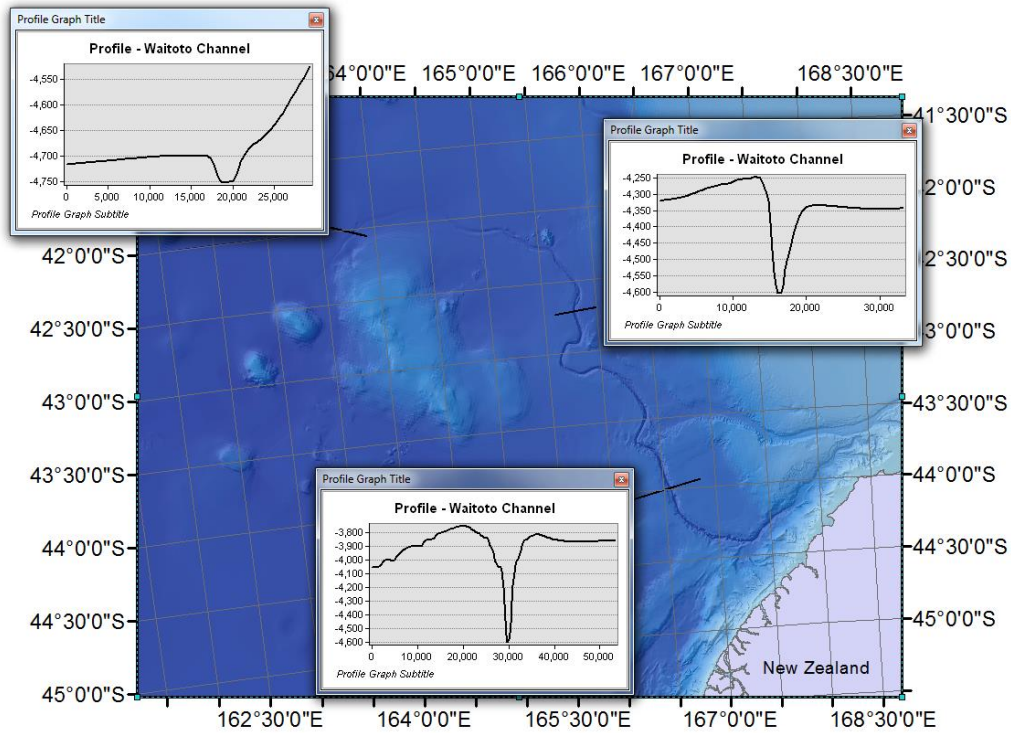
**Waiatoto Channel** – Shapefile requested by Action SCUFN27/65. A full proposal is coming to SCUFN.



Location Map



Feature map (green polyline)



(Profile elevations and distances in metres)