

UNDERSEA FEATURE NAME PROPOSAL
(Sea NOTE overleaf)

Note: The boxes will expand as you fill the form.

Name Proposed: Qiluo Guyots	Ocean or Sea: Western Pacific Ocean
------------------------------------	--

Geometry that best defines the feature (Yes/No) :						
Point	Line	Polygon	Multiple points	Multiple lines*	Multiple polygons*	Combination of geometries*
		Yes				

* Geometry should be clearly distinguished when providing the coordinates below.

	Lat. (e.g. 63°32.6'N)	Long. (e.g. 046°21.3'W)
Coordinates:	20°15.5'N (top)	149°39.2'E (top)
	20°00.8'N (top)	150°09.9'E (top)
	19°39.5'N (top)	150°42.6'E (top)
	20°20.3'N (top)	150°41.1'E (top)
	19°04.1'N (bottom)	150°37.5'E (bottom)
	19°11.2'N	150°31.4'E
	19°29.6'N	150°25.3'E
	19°29.4'N	150°08.8'E
	19°33.8'N	150°04.8'E
	19°38.0'N	150°04.2'E
	19°42.2'N	149°53.5'E
	19°47.5'N	149°54.7'E
	19°53.4'N	149°51.0'E
	19°52.4'N	149°45.1'E
	19°54.7'N	149°40.7'E
	19°58.8'N	149°35.1'E
	19°59.9'N	149°27.8'E
	19°58.1'N	149°21.4'E
	20°13.3'N	149°14.7'E
	20°30.5'N	149°19.6'E
	20°36.5'N	149°28.8'E
	20°38.6'N	149°42.5'E
	20°42.7'N	149°49.0'E
	20°38.0'N	149°50.6'E
	20°35.1'N	149°57.0'E
	20°41.2'N	150°02.3'E
	20°50.1'N	150°04.1'E
	21°01.7'N	150°07.7'E
	21°11.9'N	150°08.8'E
	21°17.9'N	150°08.9'E
21°18.6'N	150°13.1'E	
21°16.4'N	150°19.1'E	
21°15.2'N	150°23.3'E	
21°10.3'N	150°23.9'E	
21°00.3'N	150°20.8'E	
20°50.2'N	150°19.9'E	
20°46.0'N	150°19.3'E	
20°40.7'N	150°18.1'E	
20°34.4'N	150°18.4'E	

	20°29.5'N	150°20.5'E
	20°25.9'N	150°23.6'E
	20°16.6'N	150°23.3'E
	20°11.1'N	150°26.4'E
	20°10.6'N	150°30.3'E
	20°31.4'N	150°31.0'E
	20°30.5'N	150°36.9'E
	20°26.0'N	150°52.3'E
	20°25.0'N	151°00.2'E
	20°20.1'N	150°59.4'E
	20°16.8'N	150°50.2'E
	20°11.7'N	150°42.4'E
	20°08.1'N	150°41.5'E
	20°02.9'N	150°41.2'E
	19°59.6'N	150°46.5'E
	19°52.6'N	150°47.8'E
	19°36.0'N	151°09.3'E
	19°32.9'N	151°02.8'E
	19°31.2'N	150°48.6'E
	19°27.0'N	150°47.2'E
	19°21.4'N	150°53.1'E
	19°17.5'N	150°52.3'E
	19°19.0'N	150°47.3'E
	19°04.5'N	150°43.0'E
	19°04.1'N	150°37.5'E

Feature Description:	Maximum Depth:	5780 m	Steepness :	
	Minimum Depth :	1400 m	Shape :	
	Total Relief :	4380 m	Dimension/Size :	219km×169km

Associated Features:	This set of guyots are located at the north of the western Pacific Magellan seamount region, consisting of three guyots with orientation of northwest. From west to east, they are Weiqi Guyot, Weiluo Guyot and Lowrie Guyot where Weiqi Guyot and Weiluo Guyot are named by China, and Lowrie Guyot is named by Russia. These three guyots grow on the same platform. The uppermost is the northwestern Weiqi Guyot with water depth of 1400 m.
-----------------------------	---

Chart/Map References:	Shown Named on Map/Chart:	
	Shown Unnamed on Map/Chart:	GEBCO 5.06
	Within Area of Map/Chart:	

Reason for Choice of Name (if a person, state how associated with the feature to be named):	The name of this group of guyots is derived from Weiqi Guyot and Weiluo Guyot among them.
--	---

Discovery Facts:	Discovery Date:	Jun. 2001
	Discoverer (Individual, Ship):	R/V Dayang Yihao

Supporting Survey Data, including Track Controls:	Date of Survey:	Jun. 2001
	Survey Ship:	R/V Dayang Yihao
	Sounding Equipment:	Seabeam2112.360
	Type of Navigation:	Oministar DGPS

Estimated Horizontal Accuracy (nm):	≤0.0054 nm
Survey Track Spacing:	5nm
Supporting material can be submitted as Annex in analog or digital form.	

Proposer(s):	Name(s):	China Ocean Mineral Resources R&D Association(COMRA)
	Date:	10 Sept. 2015
	E-mail:	comra@comra.org
	Organization and Address:	State Oceanic Administration, China No.1 Fuxingmenwai Ave. Beijing
	Concurrer (name, e-mail, organization and address):	

Remarks:	The proposal has been reviewed and approved by Sub-Committee on Undersea Feature Names of China Committee on Geographical Names (CCUFN) No.1 Fuxingmenwai Ave. Beijing 100860 heyunxu@sina.com
-----------------	--

NOTE : This form should be forwarded, when completed :

- a) **If the undersea feature is located inside the external limit of the territorial sea** :-
to your "National Authority for Approval of Undersea Feature Names" (see page 2-9) or, if this does not exist or is not known, either to the IHB or to the IOC (see addresses below);
- b) **If at least 50 % of the undersea feature is located outside the external limits of the territorial sea** :-
to the IHB or to the IOC, at the following addresses :

International Hydrographic Bureau (IHB) 4, Quai Antoine 1er B.P. 445 MC 98011 MONACO CEDEX <u>Principality of MONACO</u> Fax: +377 93 10 81 40 E-mail: info@ihb.mc	Intergovernmental Oceanographic Commission (IOC) UNESCO Place de Fontenoy 75700 PARIS <u>France</u> Fax: +33 1 45 68 58 12 E-mail: info@unesco.org
---	---

Attachment

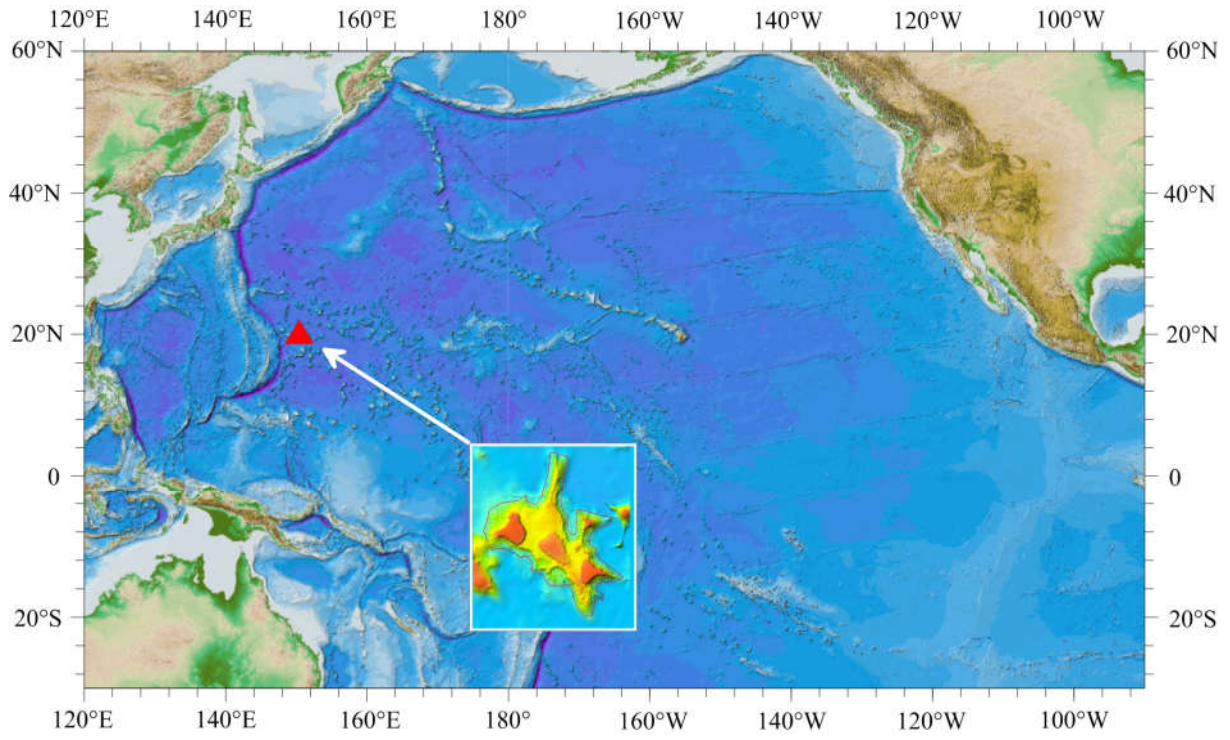


Fig1. Index map showing the location of the Qiluo Guyots

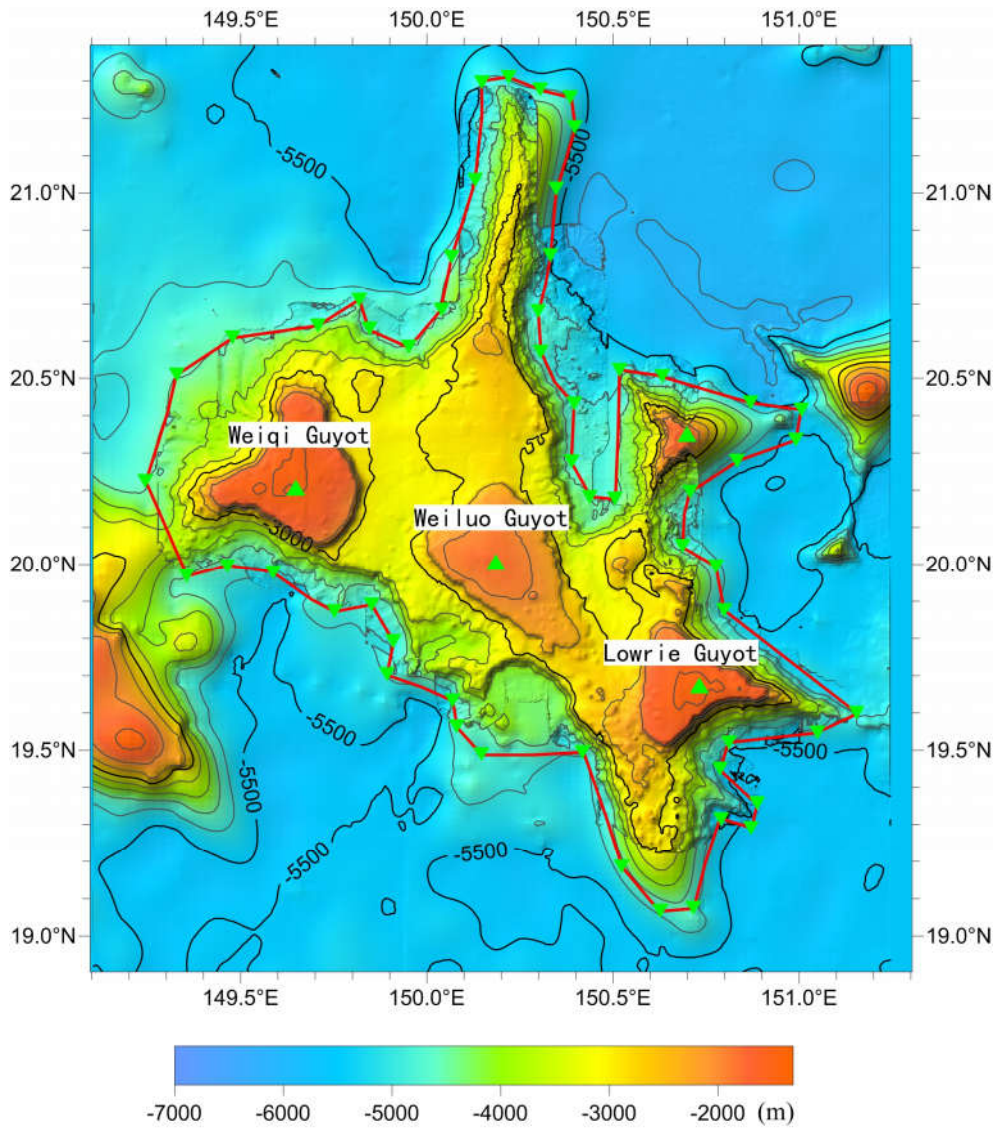


Fig2. Bathymetric map of the Qiluo Guyots.

(Contours are in 500 m spacing)

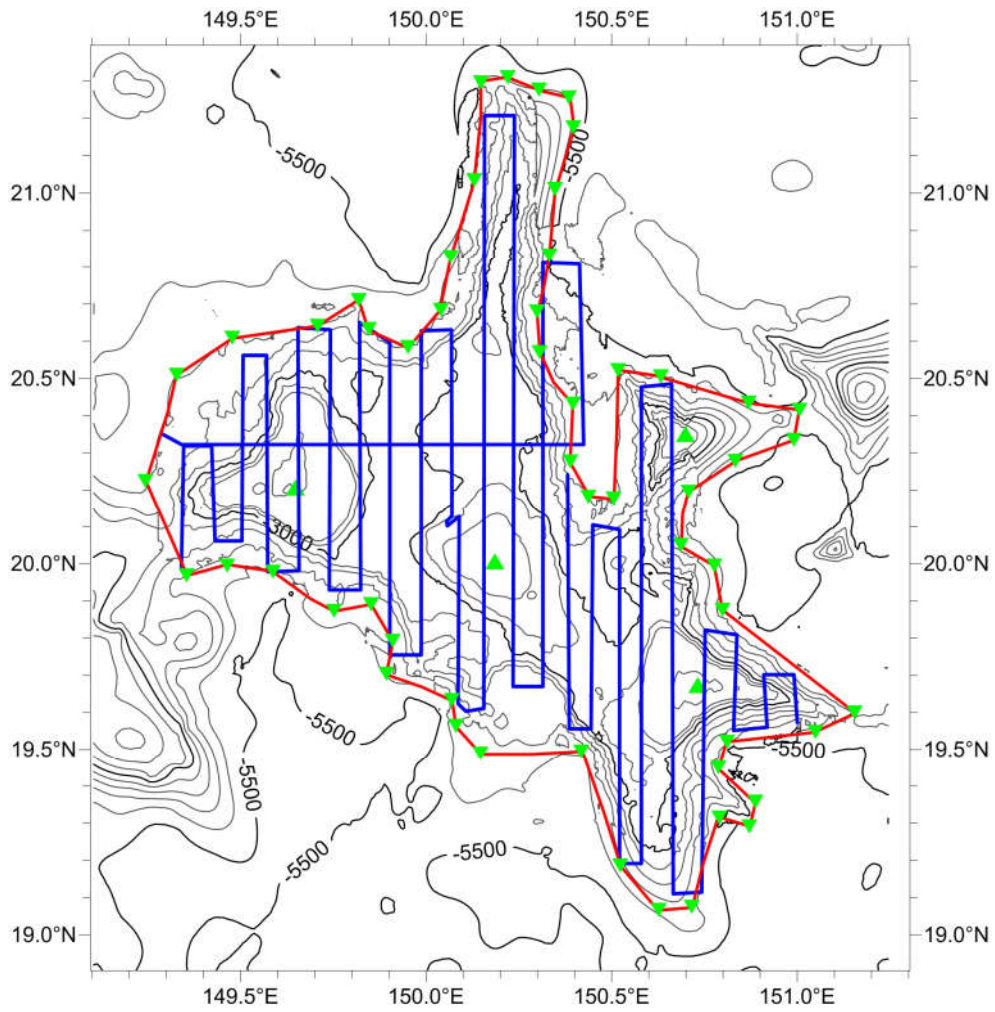


Fig.3 Bathymetric map of the Qiluo Guyots, showing track lines.

(Contours are in 500 m spacing, blue lines denote the survey lines)

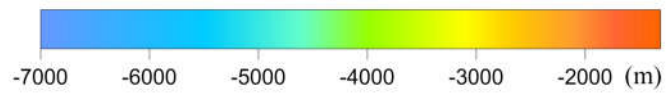
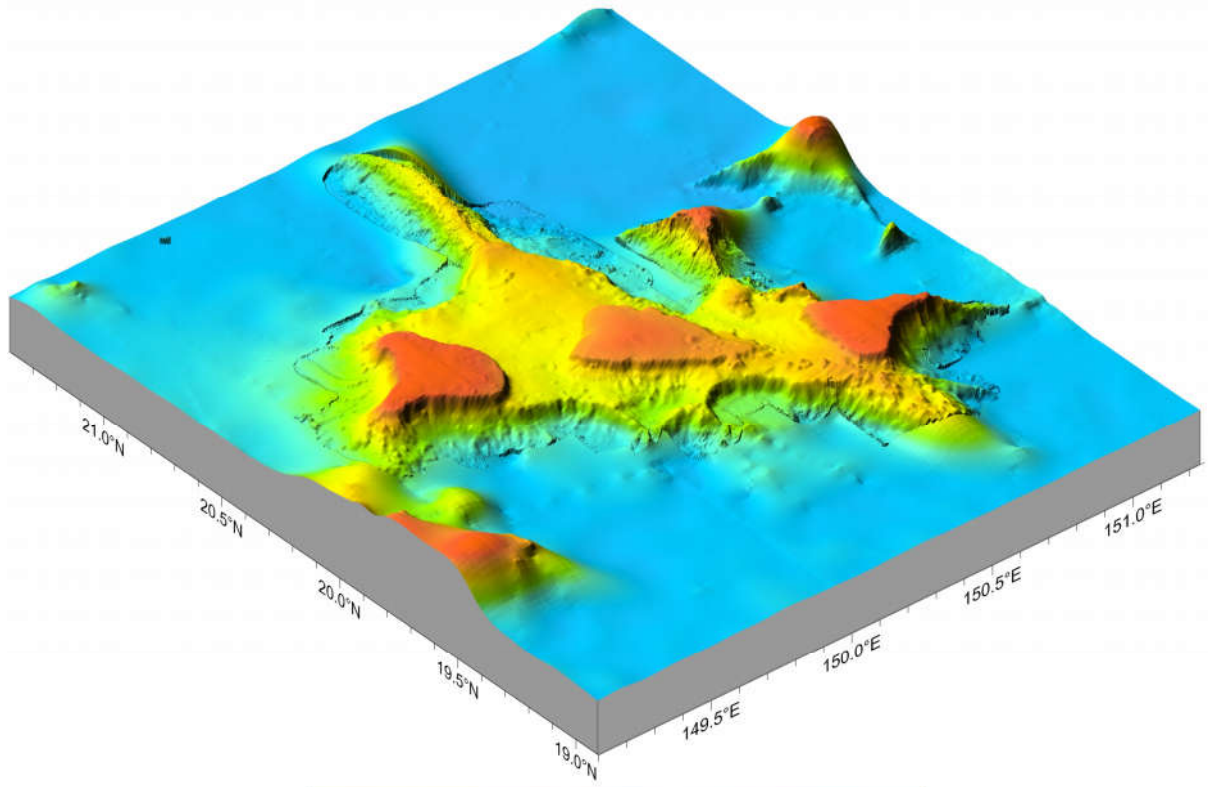


Fig 4. 3-D topographic map of Qiluo Guyots

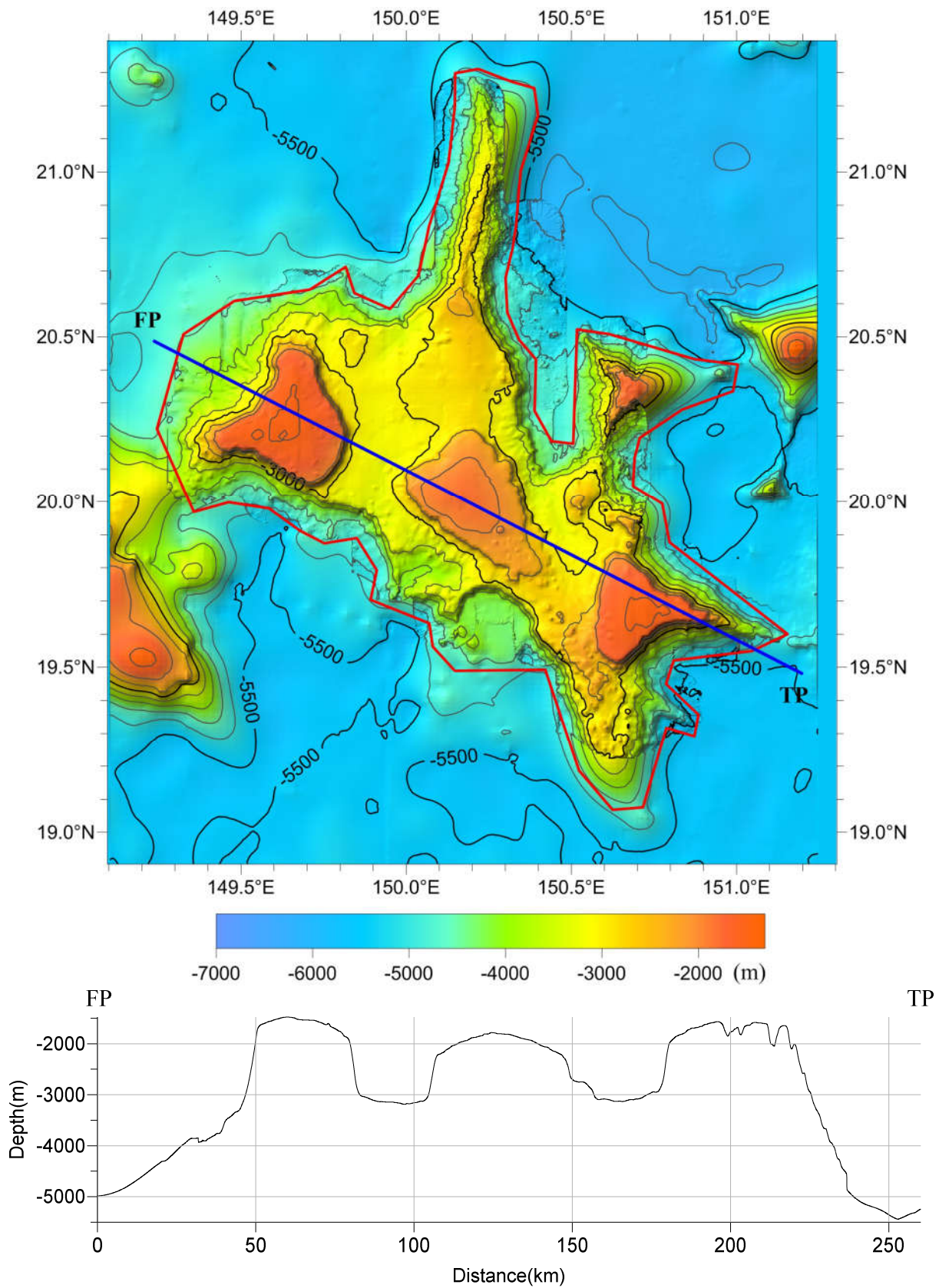


Fig.5 Bathymetric map and profile of Qiluo Guyots.