

UNDERSEA FEATURE NAME PROPOSAL

(See NOTE overleaf)

Note: The boxes will expand as you fill the form.

Name Proposed:	Hongxiu Hill	Ocean or Sea:	the South China Sea
-----------------------	--------------	----------------------	---------------------

Geometry that best defines the feature (Yes/No) :						
Point	Line	Polygon	Multiple points	Multiple lines*	Multiple polygons*	Combination of geometries*
		Yes				

* Geometry should be clearly distinguished when providing the coordinates below.

	Lat. (e.g. 63°32.6'N)	Long. (e.g. 046°21.3'W)
Coordinates:	07°20.7'N (summit)	111°21.3'E (summit)
	07°23.5'N (bottom)	111°25.2'E (bottom)
	07°22.3'N	111°25.3'E
	07°22.1'N	111°26.4'E
	07°19.3'N	111°26.5'E
	07°16.8'N	111°23.5'E
	07°16.6'N	111°21.5'E
	07°17.1'N	111°19.3'E
	07°19.8'N	111°16.5'E
	07°21.8'N	111°17.5'E
	07°22.0'N	111°18.9'E
	07°22.9'N	111°21.0'E
	07°24.0'N	111°21.8'E
	07°24.1'N	111°22.4'E
	07°23.5'N	111°25.2'E

Feature Description:	Maximum Depth:	1977m	Steepness :	2°-5°
	Minimum Depth :	1653m	Shape :	Irregular
	Total Relief :	324m	Dimension/Size :	18km × 14km

Associated Features:	Hongxiu Hill lies in the southern South China Sea. The shape of this hill is irregular.
-----------------------------	---

Chart/Map References:	Shown Named on Map/Chart:	
	Shown Unnamed on Map/Chart:	GEBCO 5.06
	Within Area of Map/Chart:	

Reason for Choice of Name (if a person, state how associated with the feature to be named):	Hongxiu comes from a poem written by Tang Xianzu(1550-1616), who was a famous dramatist in Ming Dynasty. Hongxiu means an enormous legendary bird transformed from a gigantic fish.
--	---

Discovery Facts:	Discovery Date:	2000
	Discoverer (Individual, Ship):	R/V Haiyang Sihao

Supporting Survey Data, including Track Controls:	Date of Survey:	2000-2001
	Survey Ship:	R/V Haiyang Sihao

	Sounding Equipment:	Multi-beam sounding system (Seabeam2112)
	Type of Navigation:	DGPS
	Estimated Horizontal Accuracy (nm):	<=0.08 nm
	Survey Track Spacing:	4.2nm
	Supporting material can be submitted as Annex in analog or digital form.	

Proposer(s):	Name(s):	Zhu Benduo, Huang Wenxing
	Date:	2016.8.10
	E-mail:	Zhubenduo@163.com
	Organization and Address:	Guangzhou Marine Geological Survey, China Geological Survey. No.188 Guanghai Rd., Huangpu District, Guangzhou, China.

Remarks:	The proposal has been reviewed and approved by Sub-Committee on Undersea Feature Names of China Committee on Geographical Names (CCUFN). No.1, Fuxingmenwai Street, Xicheng District, Beijing, China, 100860 heyunxu@sina.com
-----------------	---

Attachment

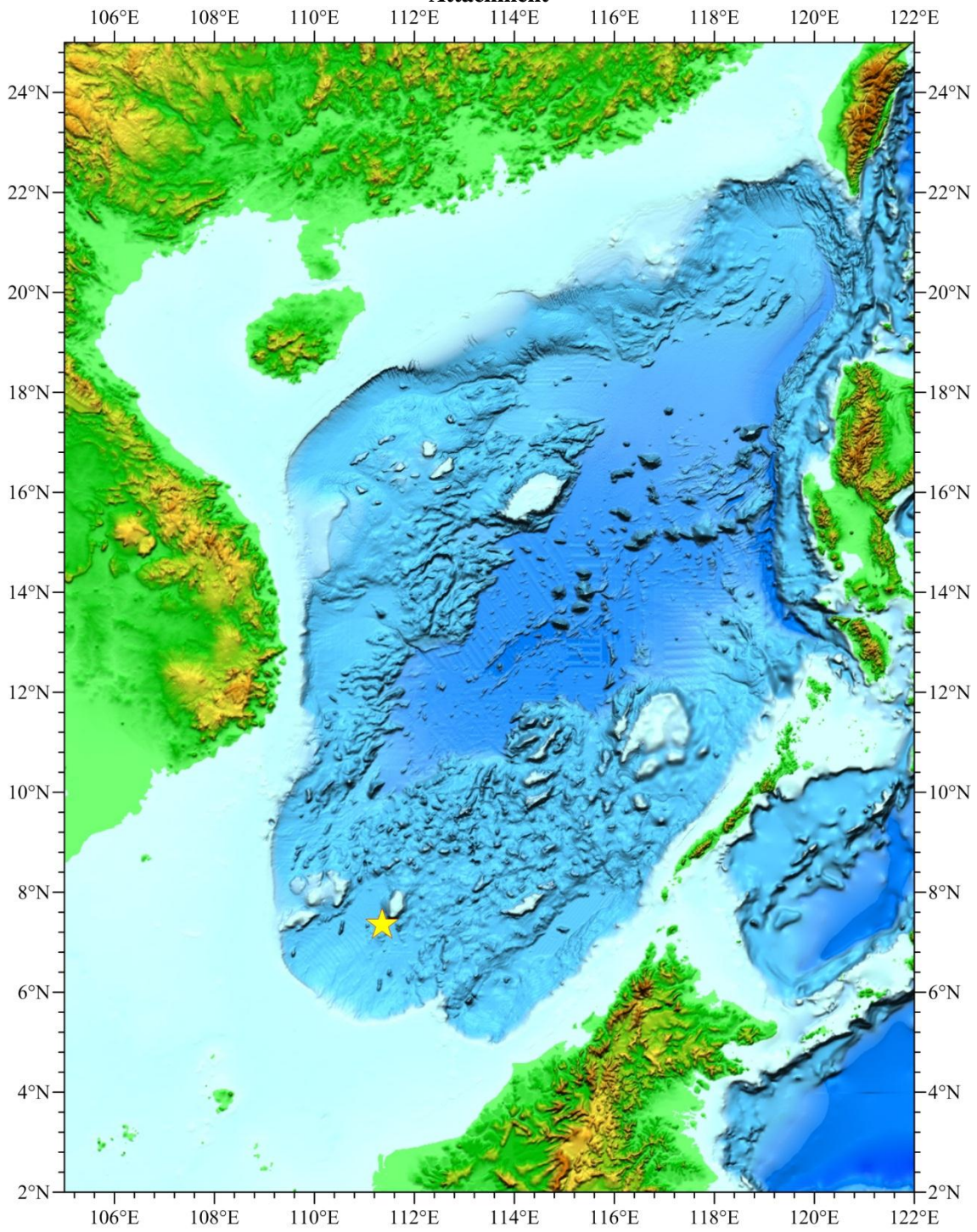


Fig.1 Index map showing the location of Hongxiu Hill.

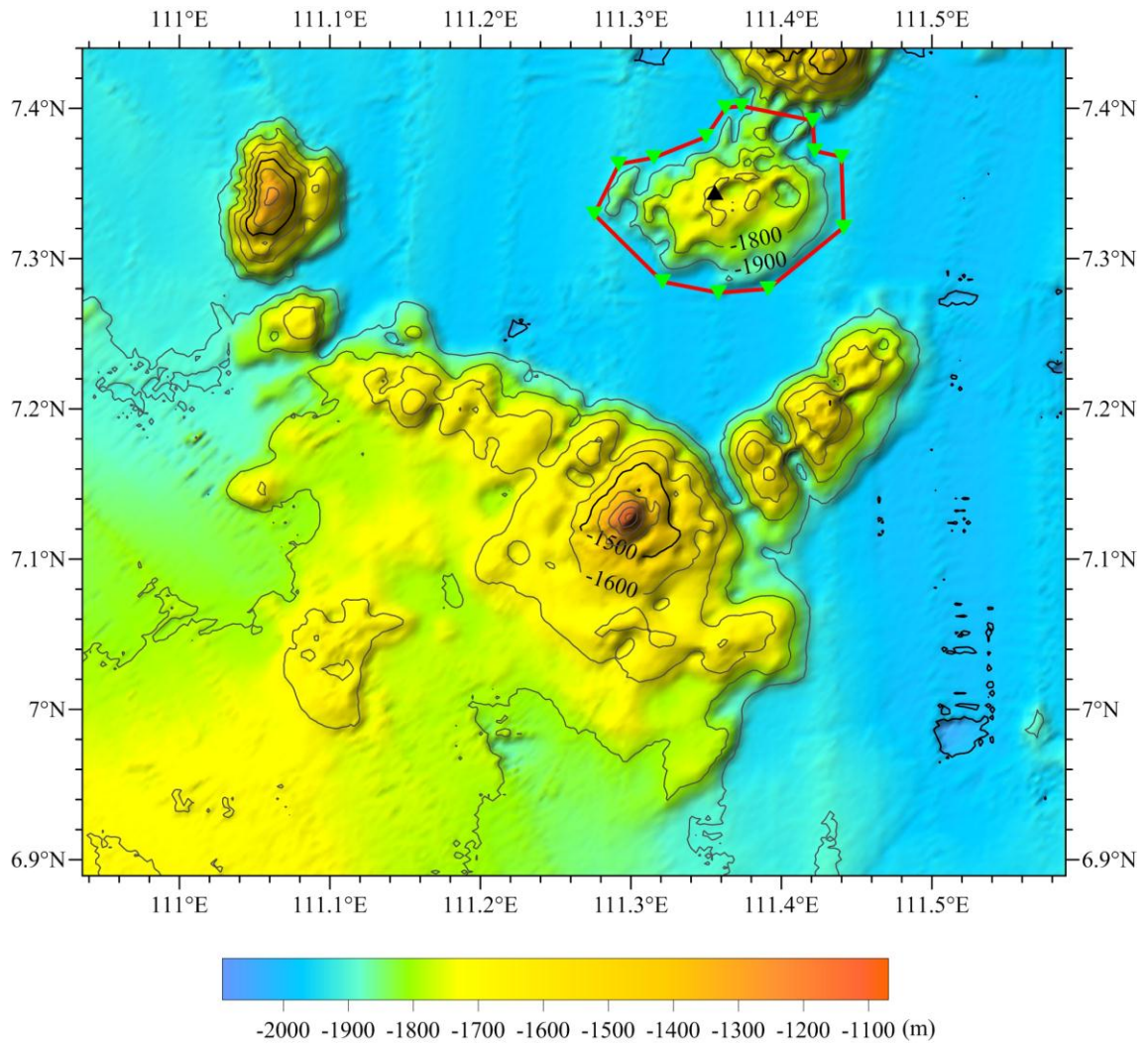


Fig.2 Bathymetric map of Hongxiu Hill (Contours are in 100m)

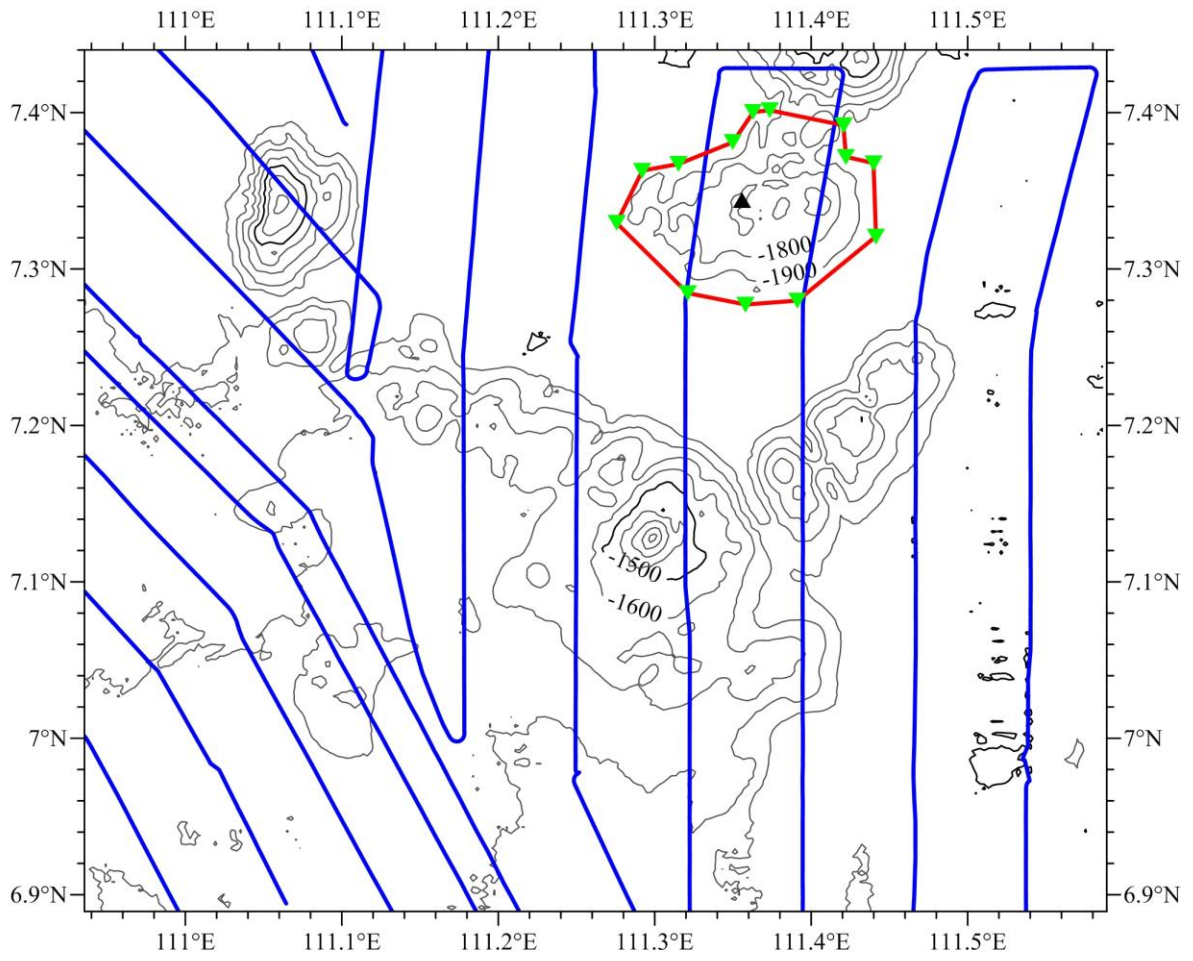


Fig.3 Bathymetric map of Hongxiu Hill overlain with track lines
(Contours are in 100 m, blue lines for the track lines)

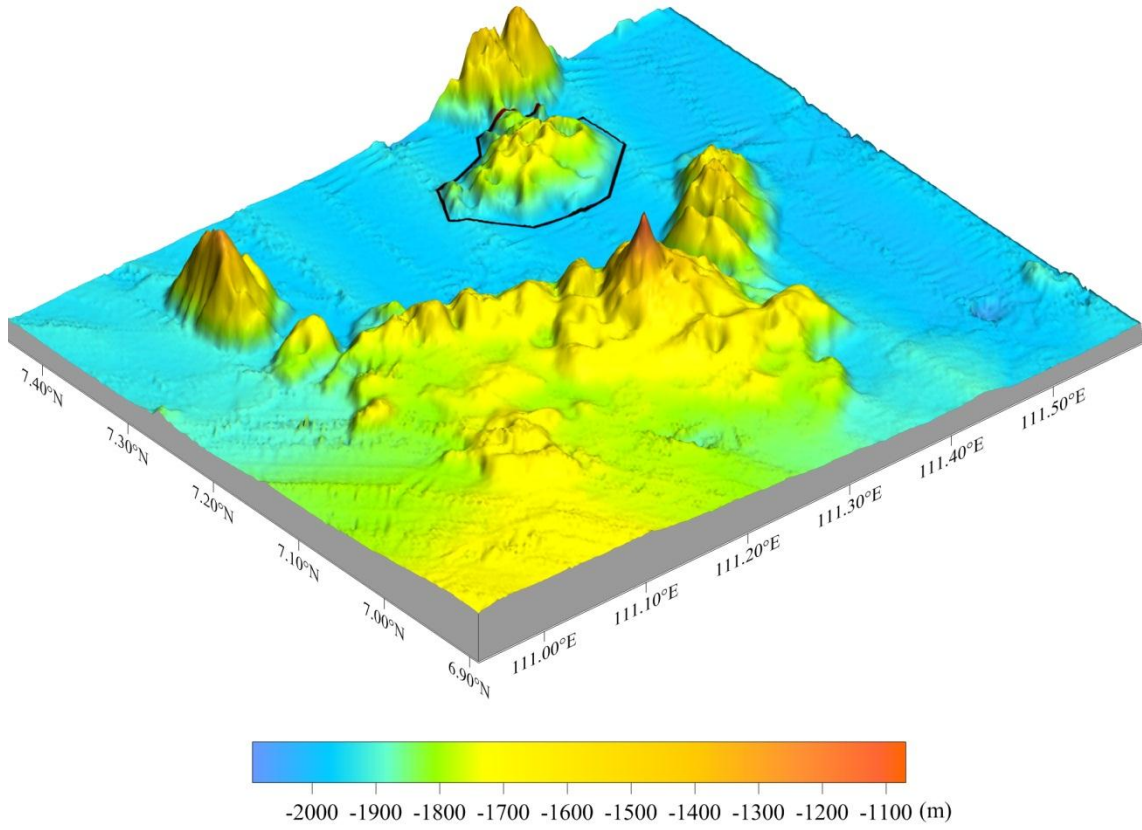


Fig.4 3-D bathymetric map of Hongxiu Hill

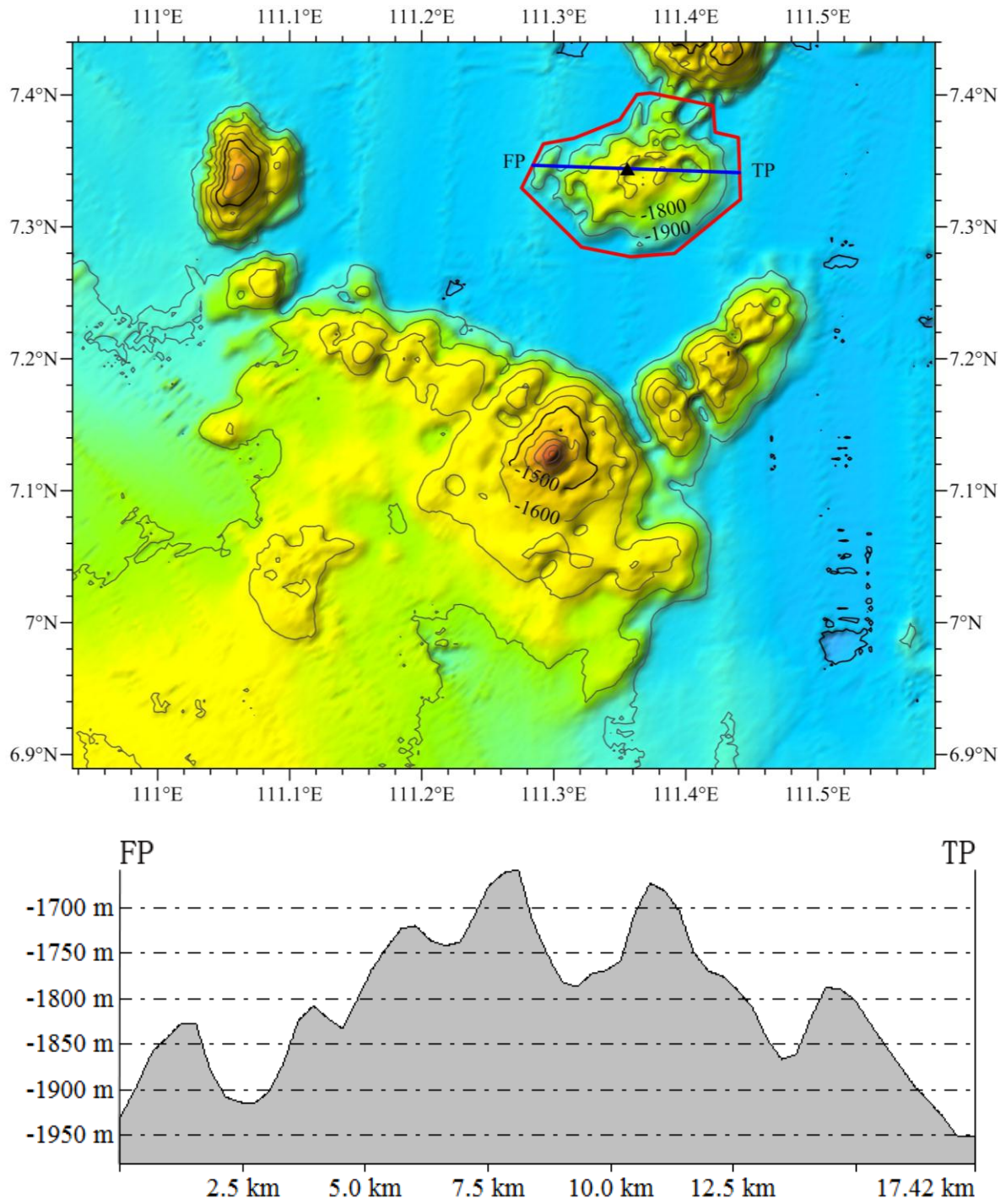


Fig.5 Profile map of Hongxiu Hill