

**INTERNATIONAL HYDROGRAPHIC
ORGANIZATION**

**INTERGOVERNMENTAL
OCEANOGRAPHIC
COMMISSION (of UNESCO)**

UNDERSEA FEATURE NAME PROPOSAL

(See **NOTE** overleaf)

Note: The boxes will expand as you fill the form.

Name Proposed:	Baochuan Hill	Ocean or Sea:	the South China Sea
-----------------------	---------------	----------------------	---------------------

Geometry that best defines the feature (Yes/No) :						
Point	Line	Polygon	Multiple points	Multiple lines*	Multiple polygons*	Combination of geometries*
		Yes				

* *Geometry should be clearly distinguished when providing the coordinates below.*

	Lat. (e.g. 63°32.6'N)	Long. (e.g. 046°21.3'W)
Coordinates:	06°26.2'N (summit)	109°50.7'E (summit)
	06°27.8'N (bottom)	109°51.8'E (bottom)
	06°27.4'N	109°52.0'E
	06°25.8'N	109°51.2'E
	06°24.7'N	109°50.7'E
	06°23.7'N	109°50.1'E
	06°23.7'N	109°49.6'E
	06°24.2'N	109°49.3'E
	06°25.4'N	109°49.5'E
	06°27.7'N	109°51.2'E
06°27.8'N	109°51.8'E	

Feature Description:	Maximum Depth:	1246m	Steepness :	5°-25°
	Minimum Depth :	991m	Shape :	Slightly elongated
	Total Relief :	255m	Dimension/Size :	8.7km × 2.4km

Associated Features:	The hill is located in the south of the South China Sea. This hill extends from southwest to northeast.
-----------------------------	---

Chart/Map References:	Shown Named on Map/Chart:	
	Shown Unnamed on Map/Chart:	GEBCO 5.06
	Within Area of Map/Chart:	

Reason for Choice of Name (if a person, state how associated with the feature to be named):	Baochuan is a ship type of Zheng He's fleet. Zheng He(A.D.1371-1433), the most famous navigator of China, took several voyages during the Chinese Ming dynasty(1368-1644), and passed by the South China Sea several times.
--	---

Discovery Facts:	Discovery Date:	Apr.-Oct.2000
	Discoverer (Individual, Ship):	R/V Haiyang Sihao

Supporting Survey Data, including Track Controls:	Date of Survey:	Apr.-Oct.2000
	Survey Ship:	R/V Haiyang Sihao

	Sounding Equipment:	Multi-beam sounding system (Seabeam2112)
	Type of Navigation:	DGPS
	Estimated Horizontal Accuracy (nm):	<=0.08 nm
	Survey Track Spacing:	2.5nm
	Supporting material can be submitted as Annex in analog or digital form.	

Proposer(s):	Name(s):	Zhu Benduo, Huang Wenxing
	Date:	2016.8.10
	E-mail:	Zhubenduo@163.com
	Organization and Address:	Guangzhou Marine Geological Survey, China Geological Survey. No.188 Guanghai Rd., Huangpu District, Guangzhou, China.

Remarks:	The proposal has been reviewed and approved by Sub-Committee on Undersea Feature Names of China Committee on Geographical Names (CCUFN). No.1, Fuxingmenwai Street, Xicheng District, Beijing, China, 100860 heyunxu@sina.com
-----------------	---

Attachment

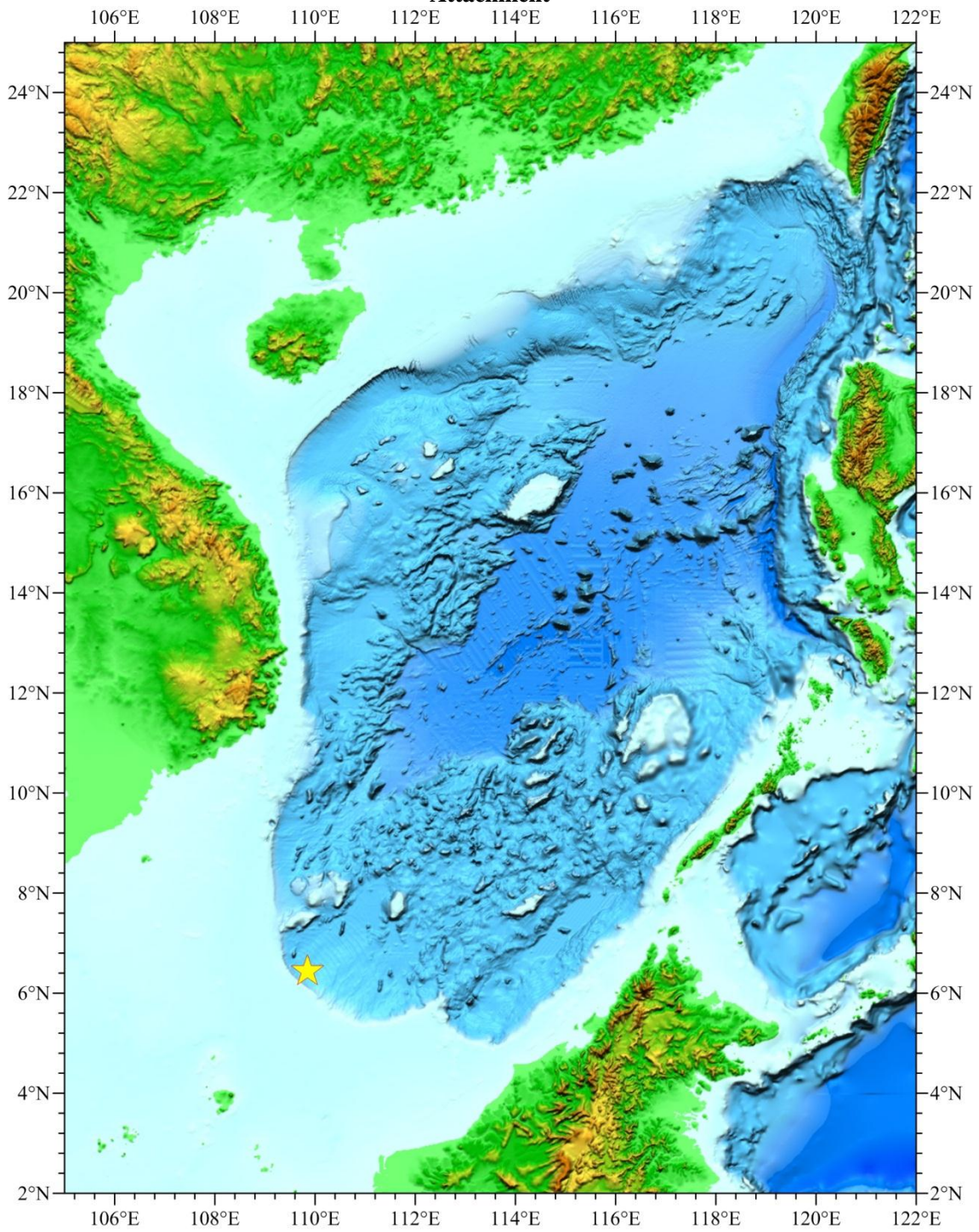


Fig.1 Index map showing the location of Baochuan Hill

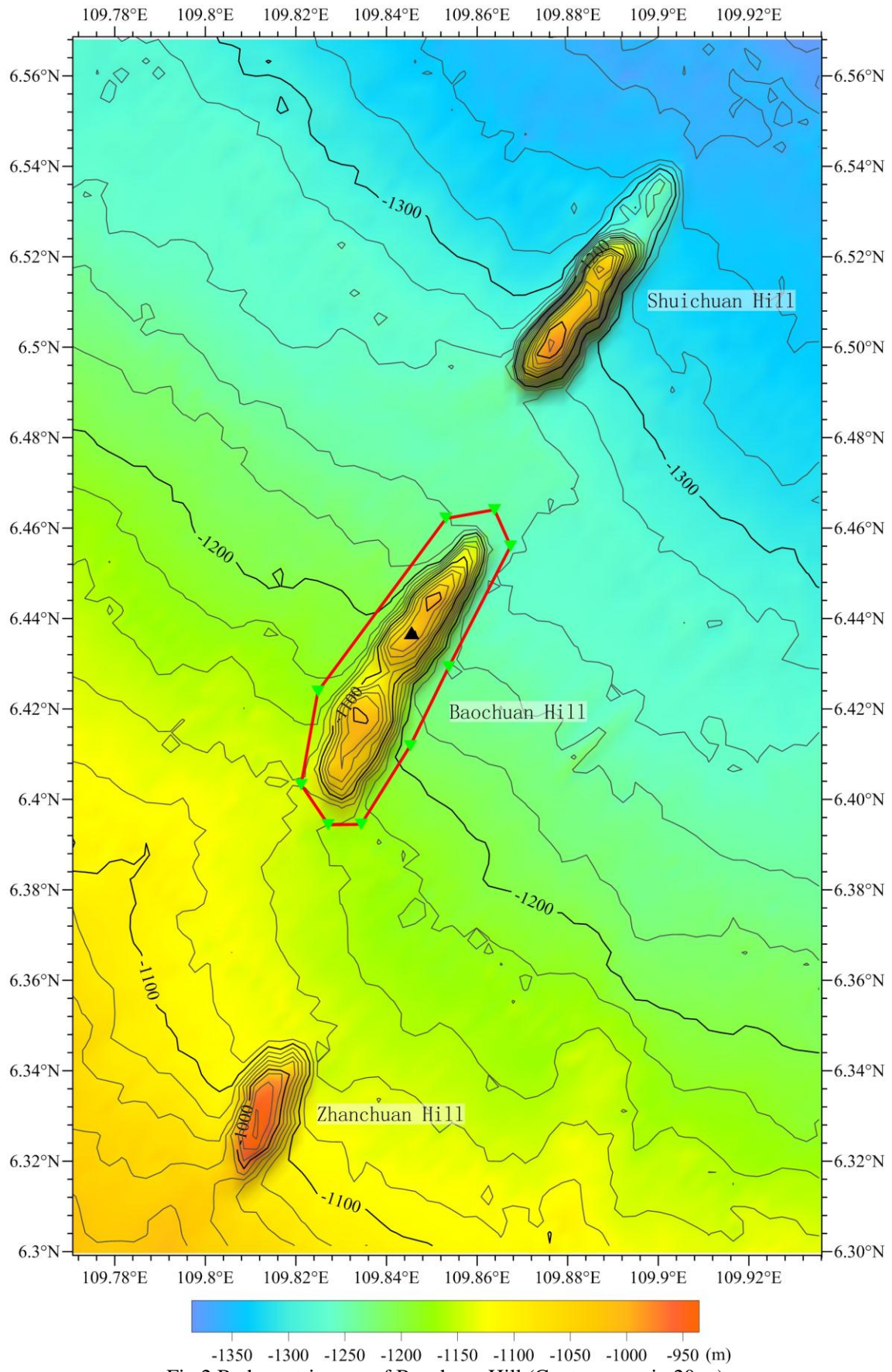


Fig.2 Bathymetric map of Baochuan Hill (Contours are in 20 m)

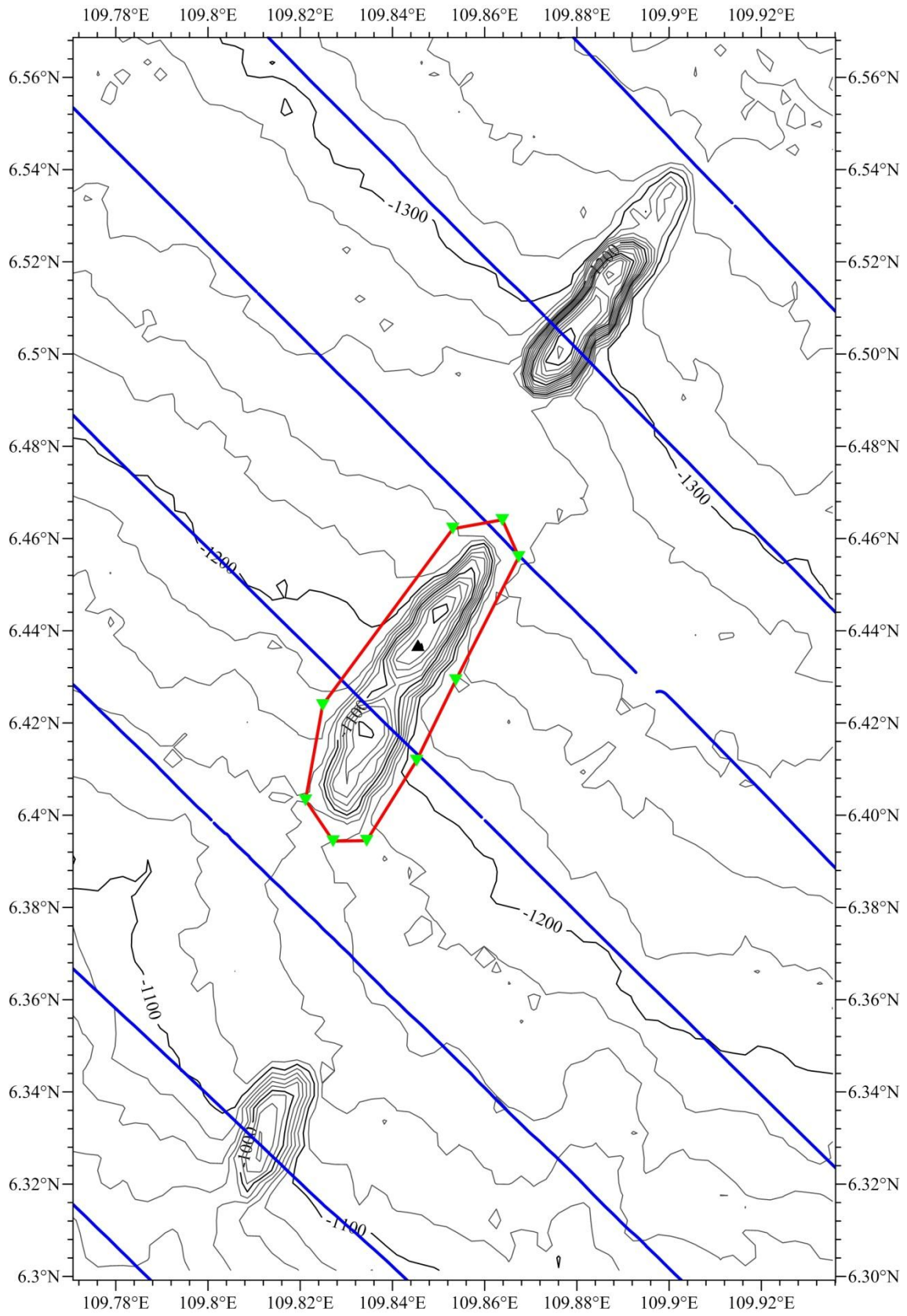


Fig.3 Bathymetric map of Baochuan Hill overlain with track lines
(Contours are in 20 m, blue lines for the track lines)

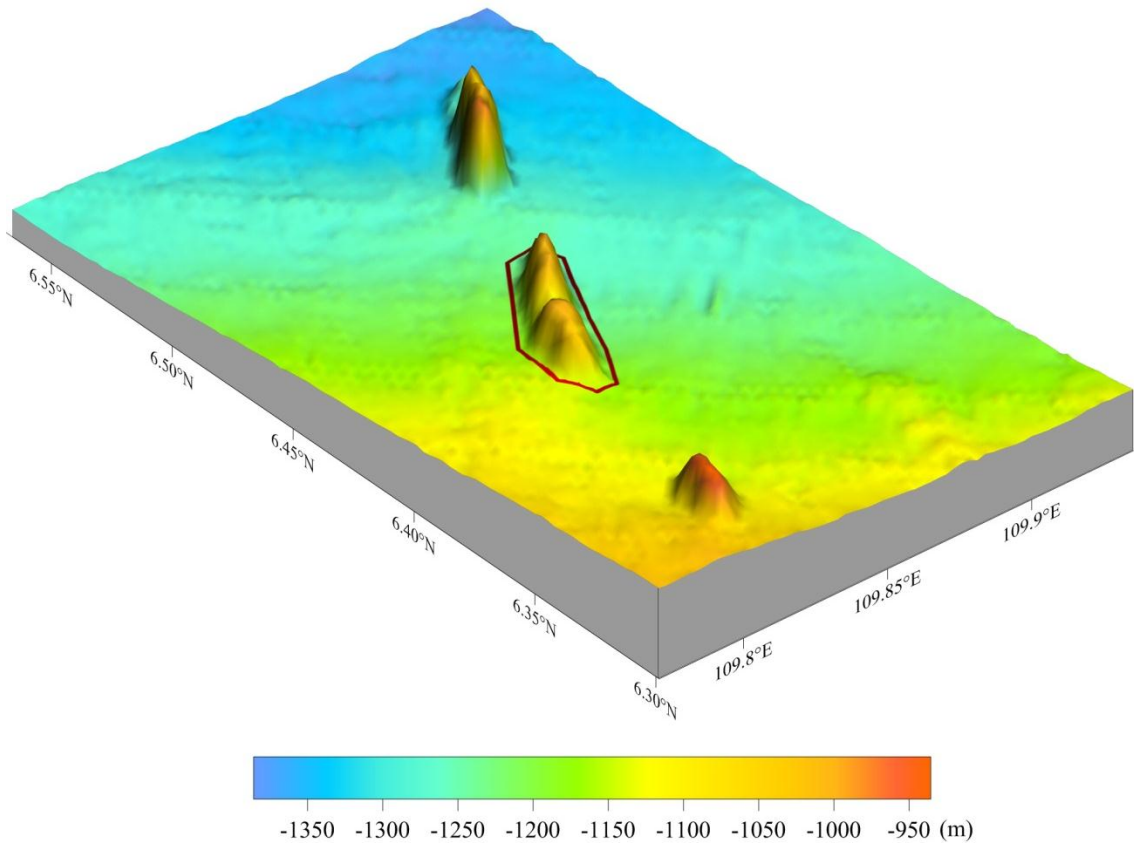
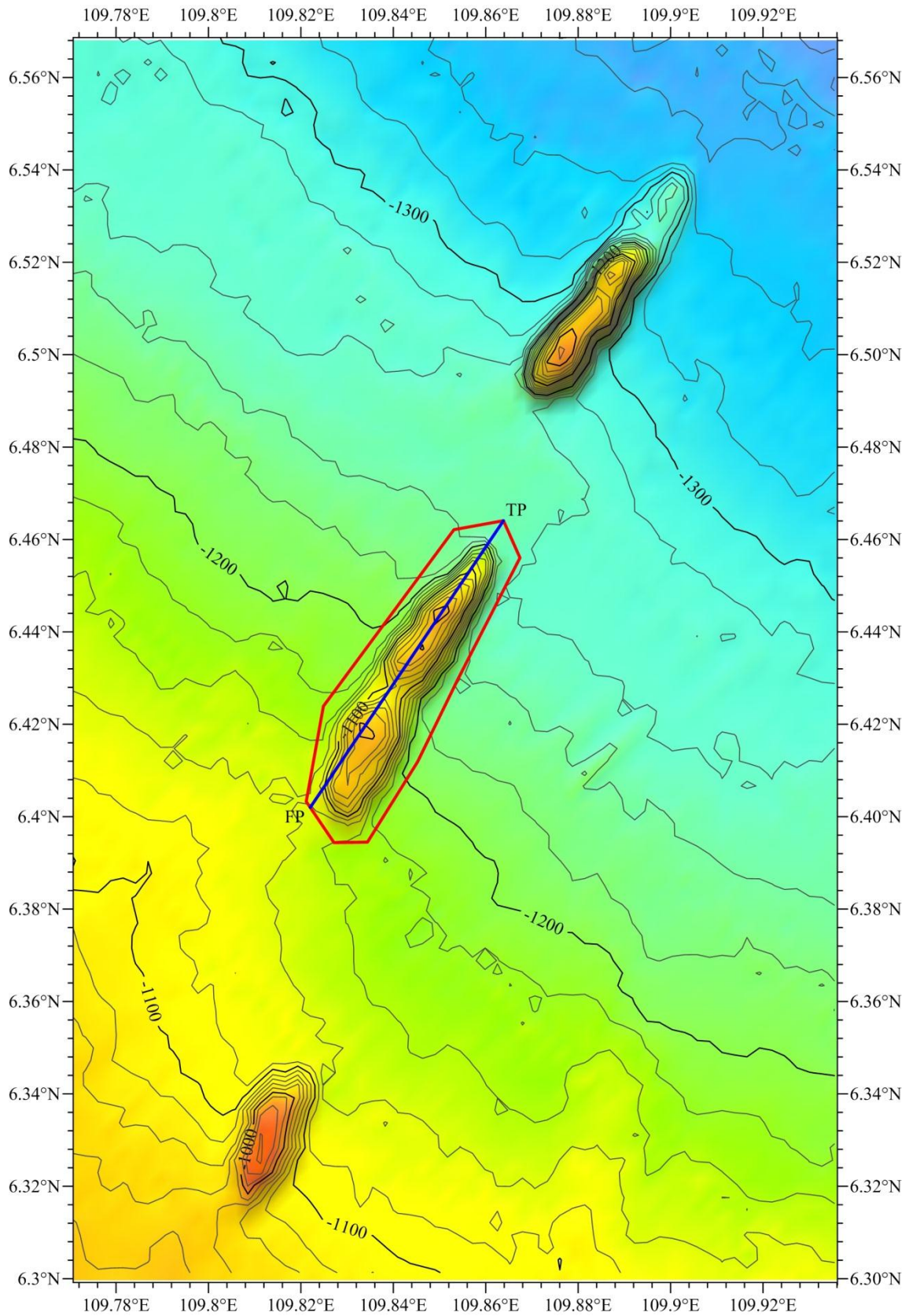


Fig.4 3-D bathymetric map of Baochuan Hill



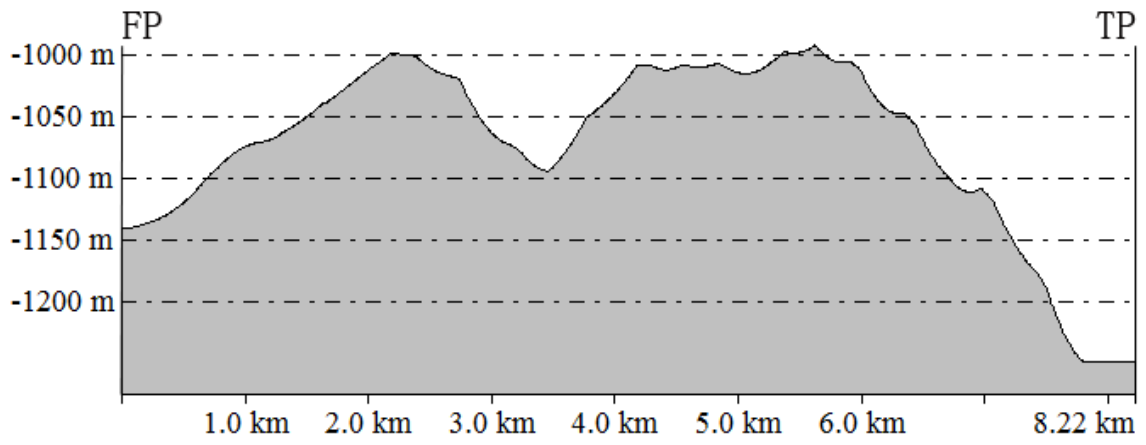


Fig.5 Profile map of Baochuan Hill