

**UNDERSEA FEATURE NAME PROPOSAL**  
(See IHO-IOC Publication B-6 and **NOTE** overleaf)

Note: The boxes will expand as you fill the form.

<b>Name Proposed:</b>	Jianfeng Seamount	<b>Ocean or Sea:</b>	South China Sea (SCS)
-----------------------	-------------------	----------------------	-----------------------

<b>Geometry</b> that best defines the feature (Yes/No) :						
Point	Line	Polygon	Multiple points	Multiple lines*	Multiple polygons*	Combination of geometries*
		Yes				

\* Geometry should be clearly distinguished when providing the coordinates below.

	Lat. (e.g. 63°32.6'N)	Long. (e.g. 046°21.3'W)
<b>Coordinates:</b>	19°29.6'N (summit)	116°24.7'E (summit)
	19°31.3'N (bottom)	116°22.8'E (bottom)
	19°32.9'N	116°27.0'E
	19°32.1'N	116°33.6'E
	19°29.7'N	116°35.0'E
	19°27.8'N	116°37.7'E
	19°26.1'N	116°37.2'E
	19°25.2'N	116°35.2'E
	19°25.4'N	116°32.3'E
	19°23.4'N	116°31.1'E
	19°24.4'N	116°27.7'E
	19°26.1'N	116°24.8'E
	19°26.8'N	116°22.3'E
	19°28.8'N	116°21.2'E
	19°30.0'N	116°21.7'E
19°31.3'N	116°22.8'E	

<b>Feature Description:</b>	Maximum Depth:	2587m	Steepness :	5°-15°
	Minimum Depth :	1391m	Shape :	
	Total Relief :	1196m	Dimension/Size :	26km × 15km

<b>Associated Features:</b>	Jianfeng Seamount lies in the Northern SCS Slope. The terrain of seamount top is rather gentle. The western and southern slopes of the seamount are steeper than the eastern slope.
-----------------------------	---

<b>Chart/Map References:</b>	Shown Named on Map/Chart:	Atlas of Geology and Geophysics of South China Sea (1 : 2 000 000) ,published in 1987 Atlas of Geology and Geophysics of the South China Sea (1 : 2 000 000) ,published in 2015
	Shown Unnamed on Map/Chart:	GEBCO 5.06
	Within Area of Map/Chart:	

<b>Reason for Choice of Name</b> (if a person, state how associated with the	Jianfeng Seamount has been named in 1986 by Chinese Government. Jianfeng means sharp peak in Chinese. Old bathymetric showed this
--	---

feature to be named):	seamount top is sharp and thus this seamount was named as Jianfeng Seamount. In 2010, China conducted multi-beam measurement for this seamount again.
-----------------------	---

<b>Discovery Facts:</b>	Discovery Date:	1980-1982
	Discoverer (Individual, Ship):	R/V Haiyang Erhao

<b>Supporting Survey Data, including Track Controls:</b>	Date of Survey:	Aug.-Oct., 2010
	Survey Ship:	R/V Haiyang Liuhaio
	Sounding Equipment:	Multi-beam sounding system (EM122)
	Type of Navigation:	DGPS
	Estimated Horizontal Accuracy, in nautical miles (M):	<=0.08 nm
	Survey Track Spacing:	3.6nm
Supporting material can be submitted as Annex in analog or digital form.		

<b>Proposer(s):</b>	Name(s):	Zhu Benduo, Huang Wenxing
	Date:	Aug. 1st, 2017
	E-mail:	Zhubenduo@163.com
	Organization and Address:	Guangzhou Marine Geological Survey, China Geological Survey. No.188 Guanghai Rd., Huangpu District, Guangzhou, China.
	Concurrer (name, e-mail, organization and address):	

<b>Remarks:</b>	The proposal has been reviewed and approved by Sub-Committee on Undersea Feature Names of China Committee on Geographical Names (CCUFN) No.1 Fuxingmenwai Ave. Beijing 100860 heyunxu@sina.com
-----------------	--

**NOTE:** This form should be forwarded, when completed:

- a) **If the undersea feature is located inside the external limit of the territorial sea:**  
- to your "National Authority for Approval of Undersea Feature Names" (see Publication B-6) or, if this does not exist or is not known, either to the IHO or to the IOC (see addresses below);
- b) **If at least 50 % of the undersea feature is located outside the external limits of the territorial sea:**  
- to the IHO or to the IOC, at the following addresses :

International Hydrographic Organization (IHO) 4b, Quai Antoine 1er B.P. 445 MC 98011 MONACO CEDEX Principality of MONACO Fax: +377 93 10 81 40 E-mail: <a href="mailto:info@iho.int">info@iho.int</a> Web: <a href="http://www.iho.int">www.iho.int</a>	Intergovernmental Oceanographic Commission (IOC) UNESCO Place de Fontenoy 75700 PARIS France Fax: +33 1 45 68 58 12 E-mail: <a href="mailto:info@unesco.org">info@unesco.org</a> Web: <a href="http://ioc-unesco.org/">http://ioc-unesco.org/</a>
--	--

Attachment

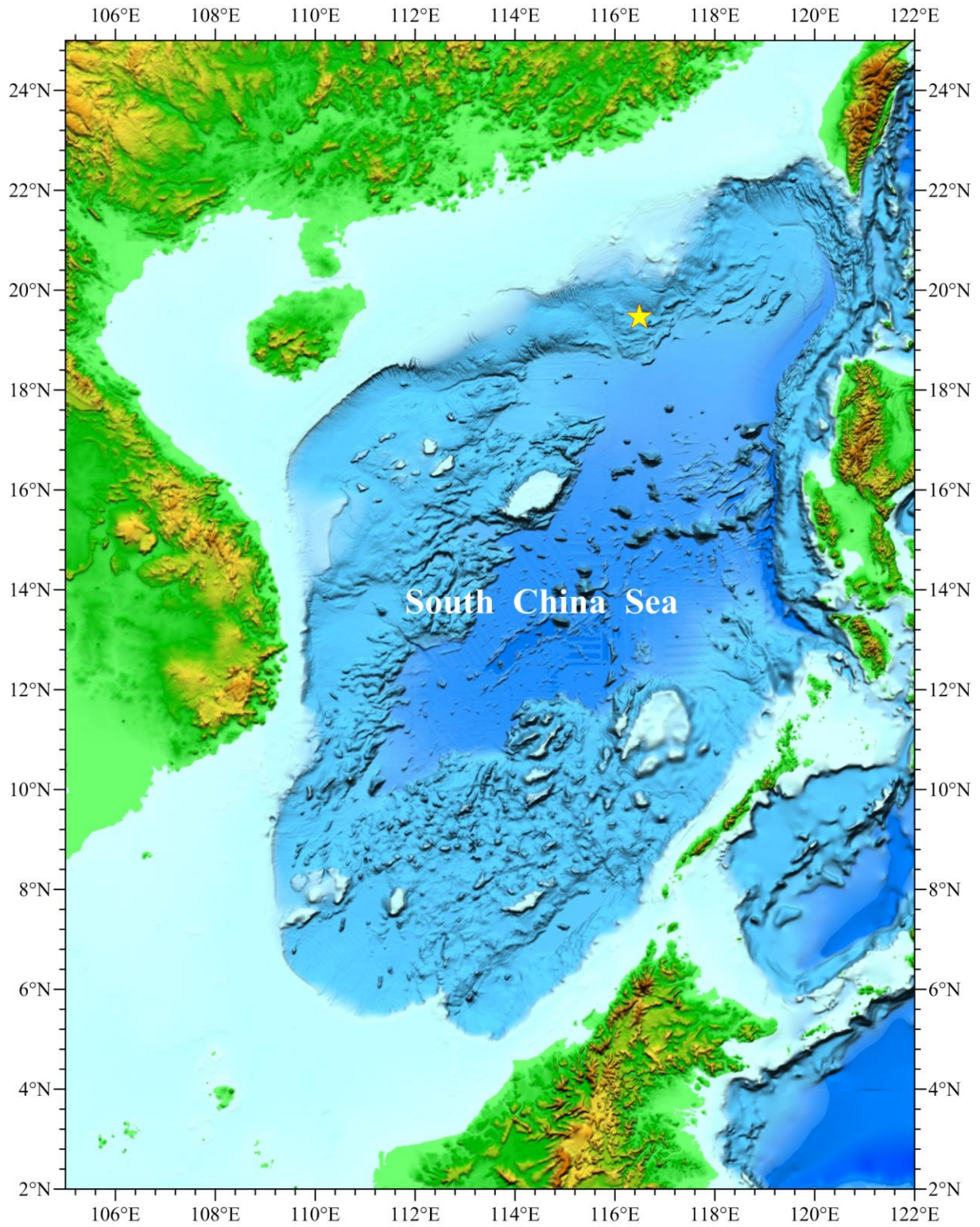


Fig.1 Index map showing the location of Jianfeng Seamount



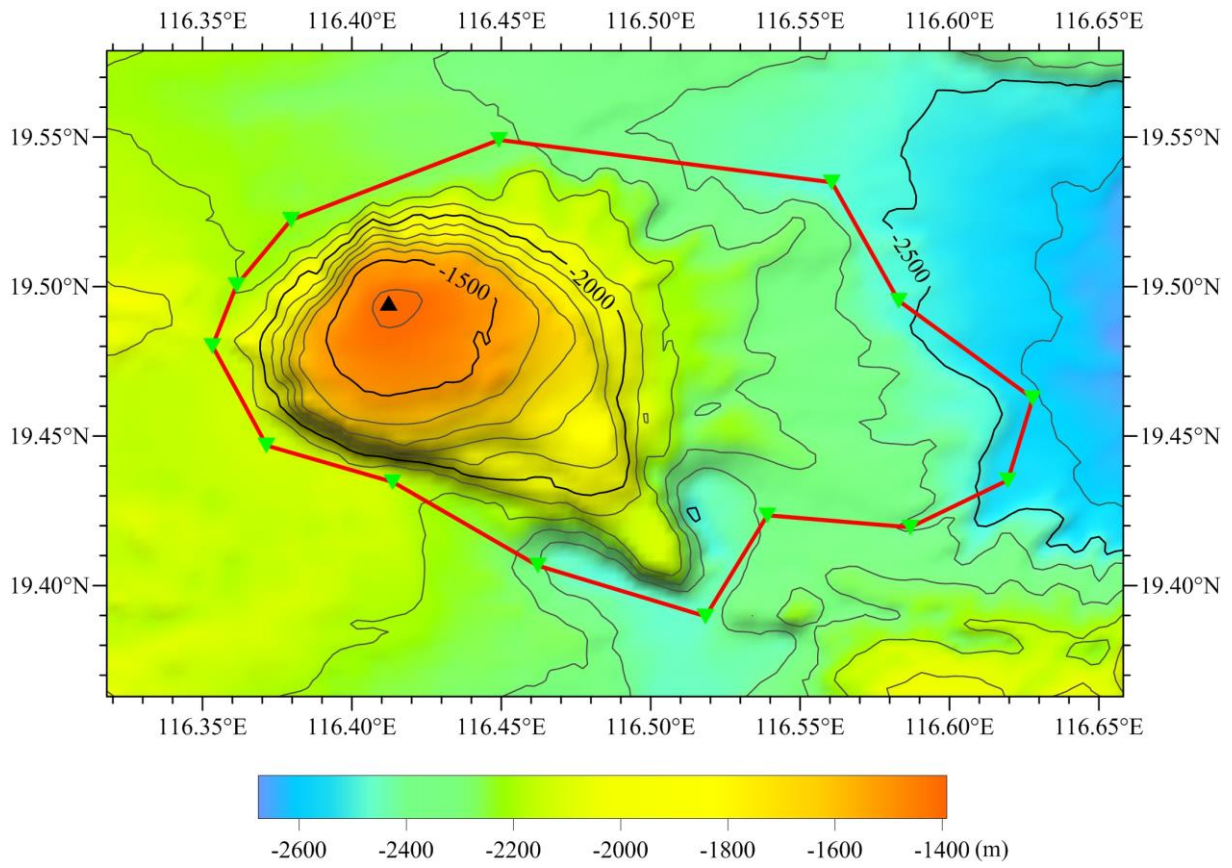


Fig.2 Bathymetric map of Jianfeng Seamount (Contours are in 100m)

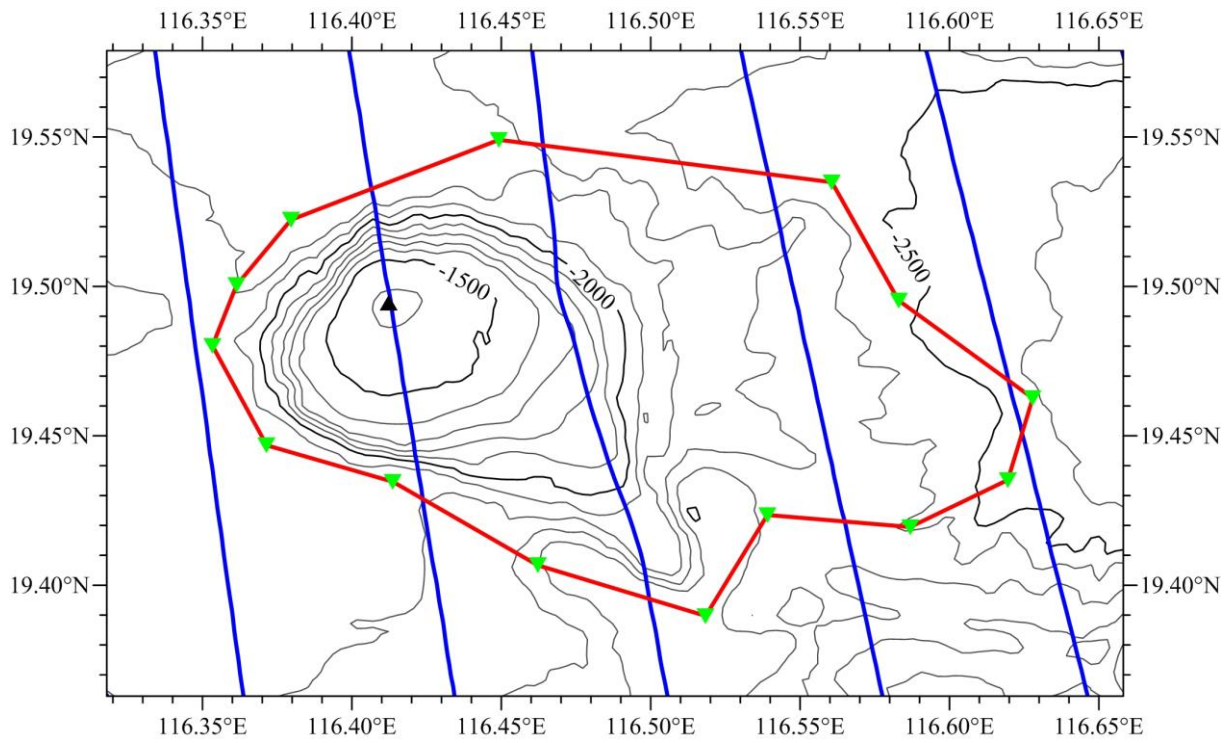


Fig.3 Bathymetric map of Jianfeng Seamount overlain with track lines (Contours are in 100m, blue lines for the track lines)

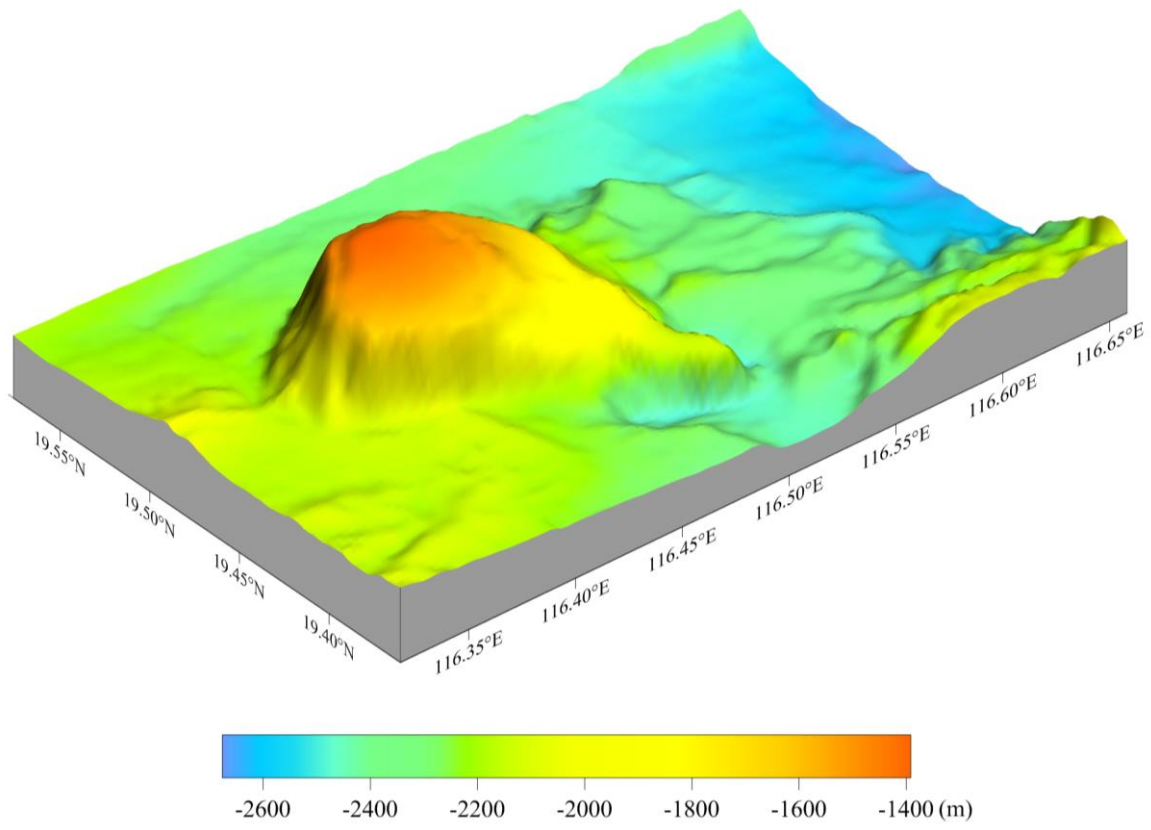


Fig.4 3-D bathymetric map of Jianfeng Seamount

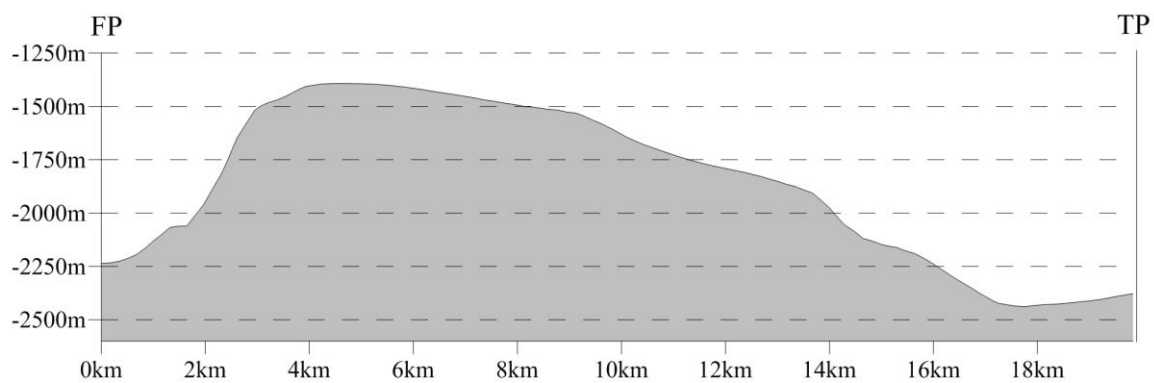
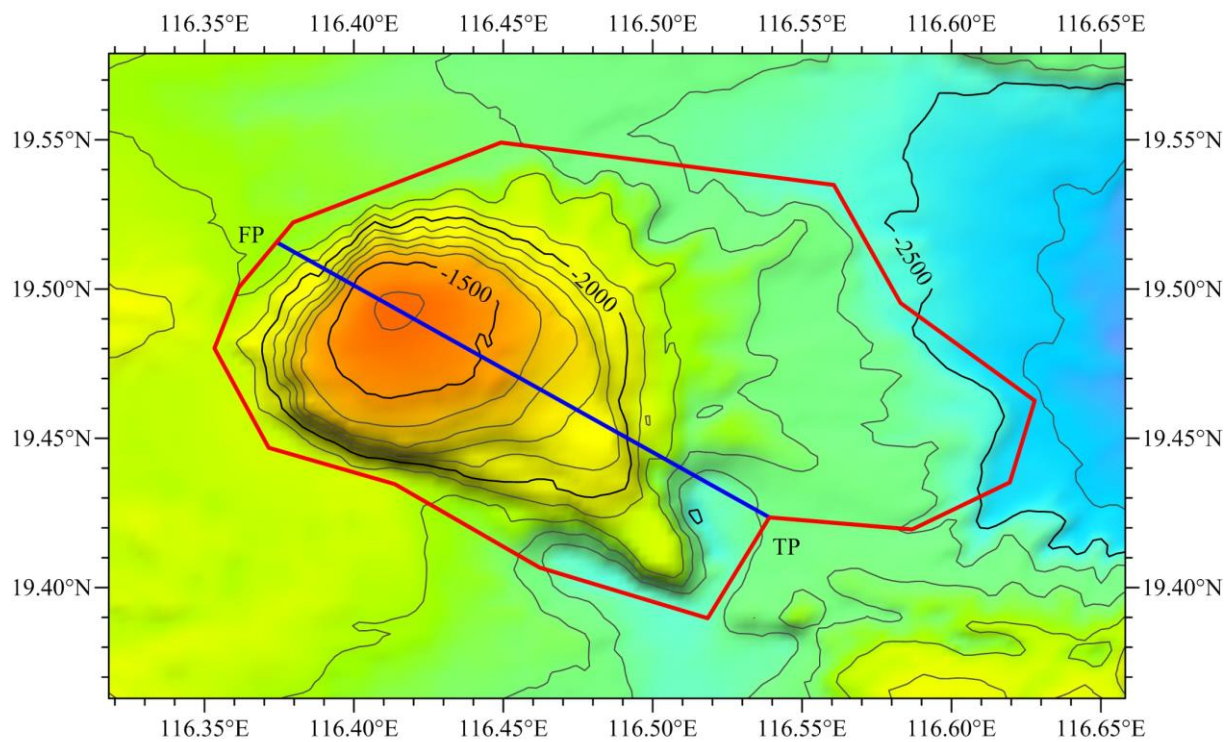


Fig.5 Profile map of Jianfeng Seamount