

**UNDERSEA FEATURE NAME PROPOSAL**

(See **NOTE** overleaf)

Note: The boxes will expand as you fill the form.

<b>Name Proposed:</b>	Mangzhong Basin	<b>Ocean or Sea:</b>	West Pacific Ocean
-----------------------	-----------------	----------------------	--------------------

Geometry that best defines the feature (Yes/no):						
Point	Line	Polygon	Multiple points	Multiple lines*	Multiple polygons*	Combination of geometries*
		Yes				

\* Geometry should be clearly distinguished when providing the coordinates below.

Coordinates:	Lat. (e.g. 63°32.6'N)	Long. (e.g. 046°21.3'W)
		15 21.0'N
	15 21.1'N	134 10.9'E
	15 21.3'N	134 09.6'E
	15 20.8'N	134 07.9'E
	15 20.5'N	134 06.9'E
	15 20.9'N	134 05.8'E
	15 19.9'N	134 04.4'E
	15 19.2'N	134 03.3'E
	15 18.5'N	134 02.5'E
	15 17.0'N	134 02.2'E
	15 15.3'N	134 02.2'E
	15 13.1'N	134 02.6'E
	15 11.1'N	134 02.8'E
	15 09.7'N	134 03.4'E
	15 09.2'N	134 03.3'E
	15 08.2'N	134 03.3'E
	15 06.9'N	134 03.1'E
	15 05.9'N	134 02.3'E
	15 05.6'N	134 01.1'E
	15 05.1'N	134 00.5'E
	15 04.1'N	134 00.2'E
	15 03.1'N	134 00.8'E
	15 03.0'N	134 02.3'E
	15 03.4'N	134 04.3'E
	15 04.1'N	134 06.9'E
	15 04.4'N	134 08.4'E
	15 05.5'N	134 09.3'E
	15 07.0'N	134 10.5'E

	15 08.2'N	134 11.3'E
	15 08.9'N	134 12.4'E
	15 09.8'N	134 12.9'E
	15 11.9'N	134 12.2'E
	15 12.8'N	134 12.1'E
	15 13.0'N	134 13.1'E
	15 13.7'N	134 13.8'E
	15 14.3'N	134 14.4'E
	15 14.8'N	134 14.0'E
	15 14.7'N	134 12.6'E
	15 14.5'N	134 10.9'E
	15 14.5'N	134 09.3'E
	15 15.3'N	134 08.6'E
	15 16.0'N	134 08.4'E
	15 16.6'N	134 08.9'E
	15 17.3'N	134 09.9'E
	15 17.5'N	134 10.9'E
	15 17.9'N	134 11.9'E
	15 19.0'N	134 13.2'E
	15 19.5'N	134 13.7'E
	15 20.0'N	134 13.4'E
	15 20.4'N	134 12.3'E
	15 21.0'N	134 12.2'E

<b>Feature description:</b>	Maximum Depth:	5200m	Steepness:	
	Minimum Depth:	4500 m	Shape:	polygon
	Total Relief:	700m	Dimension/Size:	22km × 32km

<b>Associated Features:</b>	This ocean basin is adjacent to the west side of “Qingming” Seamount. It has a nearly rectangle overlook plane shape, with length of 32km. The shallowest water depth is about 4500m, and the deepest depth is about 5200m. The average slope is 1.7 ° in this basin.
-----------------------------	---

<b>Chart/Map References:</b>	Shown Named on Chart/Map	
	Shown Unnamed on Chart/Map	GEBCO 5.07
	Within Area of Chart/Map	

<b>Reason for Choice of Name</b> (if a person, state how associated with the feature to be named):	The UN Educational, Scientific, and Cultural Organization (UNESCO) adopted a decision that China's "the 24 Solar Terms" be inscribed on the Representative List of the Intangible Cultural Heritage of Humanity on 30 November in Ethiopia's capital Addis Ababa. “The 24 Solar Terms” is the Chinese heritage and knowledge in China of time and practices developed through observation of the sun's annual motion. The ancient Chinese divided the sun’s annual circular motion into 24
---	--

	segments. Each segment was called a specific Solar Term. “Mangzhong”, the ninth term of the 24 Solar Terms declares the midsummer officially begins. “Mangzhong” literally means Grain in Beard.
--	--

<b>Discovery Facts:</b>	Discovery Date:	September 2014
	Discoverer(individual, ship):	R/V Xiang Yang Hong 10

<b>Supporting Survey data, including Track Controls:</b>	Date of survey:	September 2014
	Survey ship:	R/V Xiang Yang Hong 10
	Sounding Equipment:	SeaBeam3012
	Type of navigation:	StarFire3050M
	Estimated Horizontal Accuracy:	0.0005nm (1m)
	Distance between survey lines:	10 km
	Supporting material can be submitted as annex in analog or digital form.	

<b>Proposer(s):</b>	Name(s):	The Second Institute of Oceanography, SOA, China
	Date :	28 May 2017
	E-mail:	0911guang@163.com
	Organization and address:	The Second Institute of Oceanography, No.36 Baochubei Road, Hangzhou China 310012
	Concurrer (name, organization, address):	Lishoujun, Zhaodineng, Wuziyin, Wuzhaocai, Luoxiaowen, Shangjihong, The Second Institute of Oceanography
<b>Remark :</b>	The proposal has been reviewed and approved by Sub-Committee on Undersea Feature Names of China Committee on Geographical Names (CCUFN) No.1 Fuxingmenwai Ave. Beijing 100860 <a href="mailto:heyunxu@sina.com">heyunxu@sina.com</a>	

**Note:** this form should be forwarded, when completed:

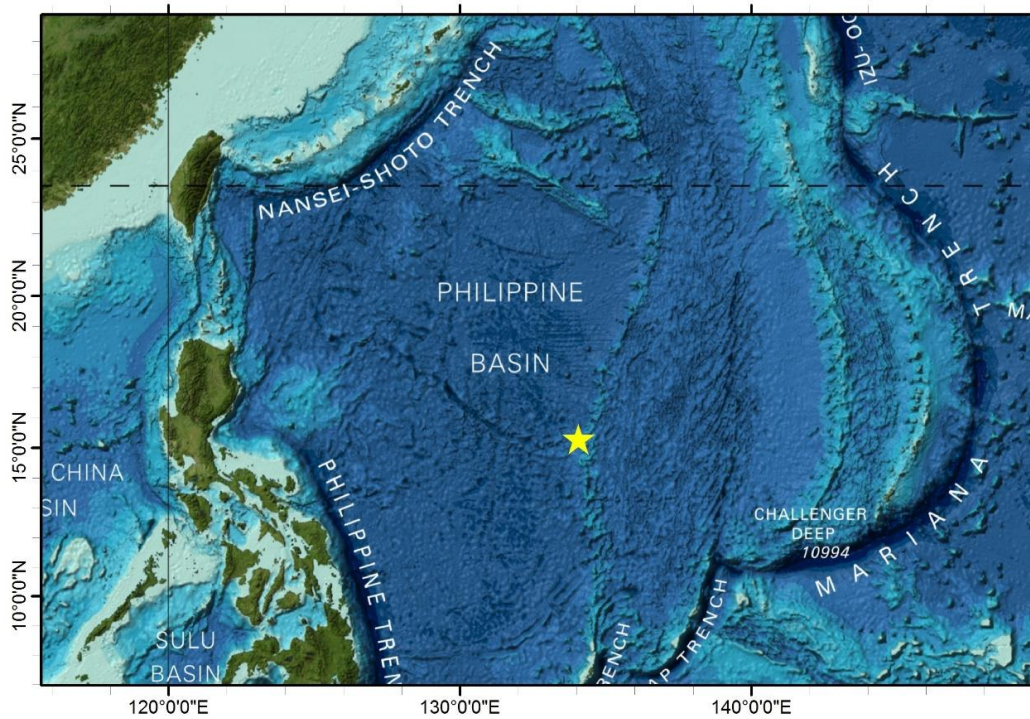
- a) **If the undersea feature is located inside the external limit of the territorial sea:** to your “National Authority for Approval of Undersea Feature Names”(see page 2-9) or, if this does exist or is not known, either to the IHB or to the IOC (see address below):
- b) **If at least 50% of the undersea feature is located outside the external limits of the territorial sea:** to the IHB or to the IOC, at the following address:

International Hydrographic Bureau (IHB) 4, Quai Antoine 1er	Intergovernmental Oceanographic Commission (IOC) UNESCO
--	--

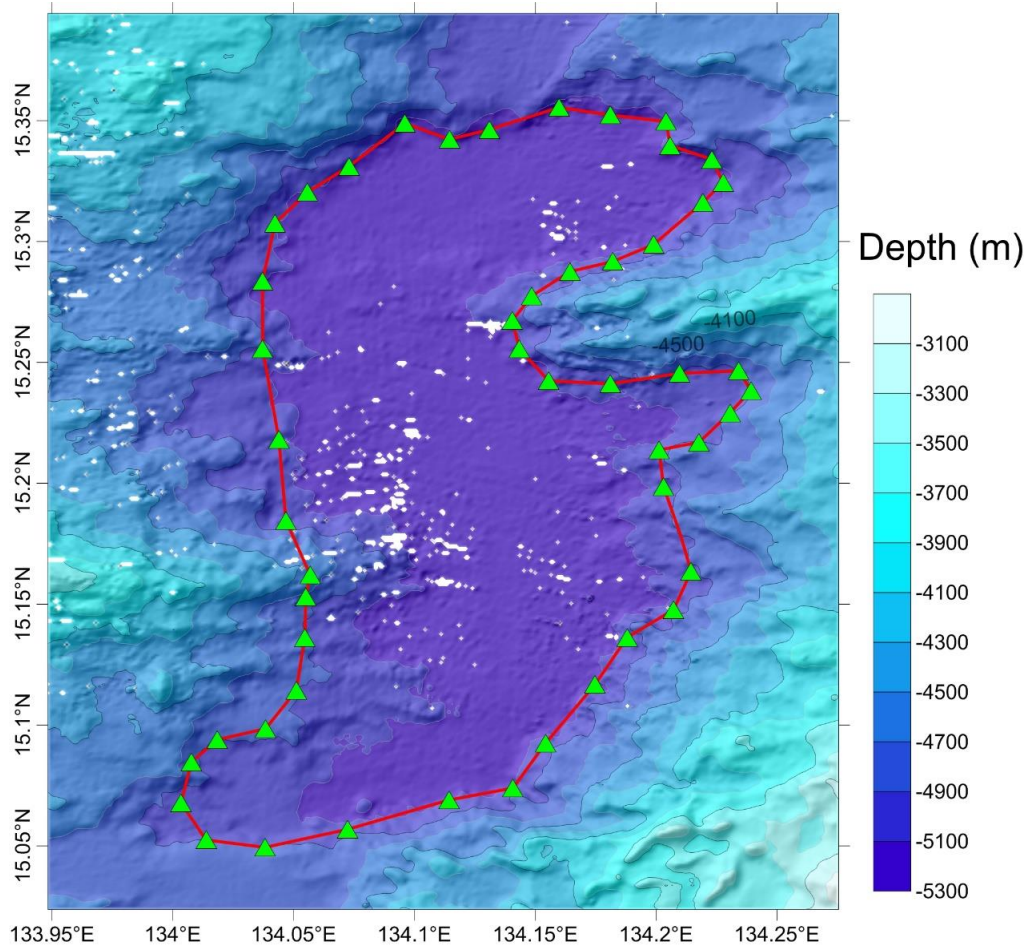
B.P. 445  
MC 98011 MONACO CEDEX  
Principality of MONACO  
Fax: +377 93 10 81 40  
E-mail: [info@ihb.mc](mailto:info@ihb.mc)

Place de Fontenoy  
75700 PARIS  
France  
Fax: +33 1 45 68 58 12  
E-mail: [info@unesco.org](mailto:info@unesco.org)

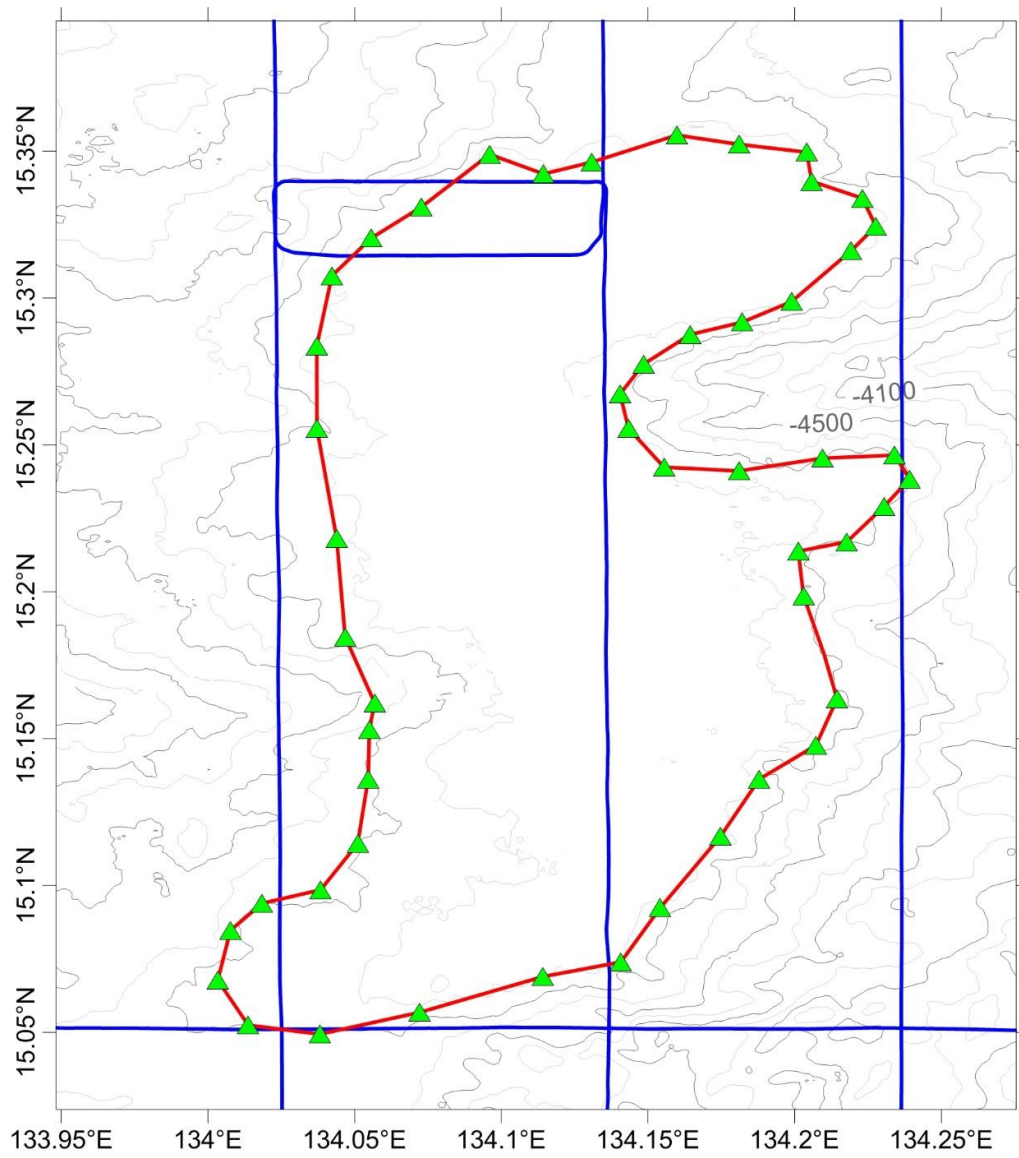
## Figures



**Fig.1** Index map showing the location of Mangzhong Basin

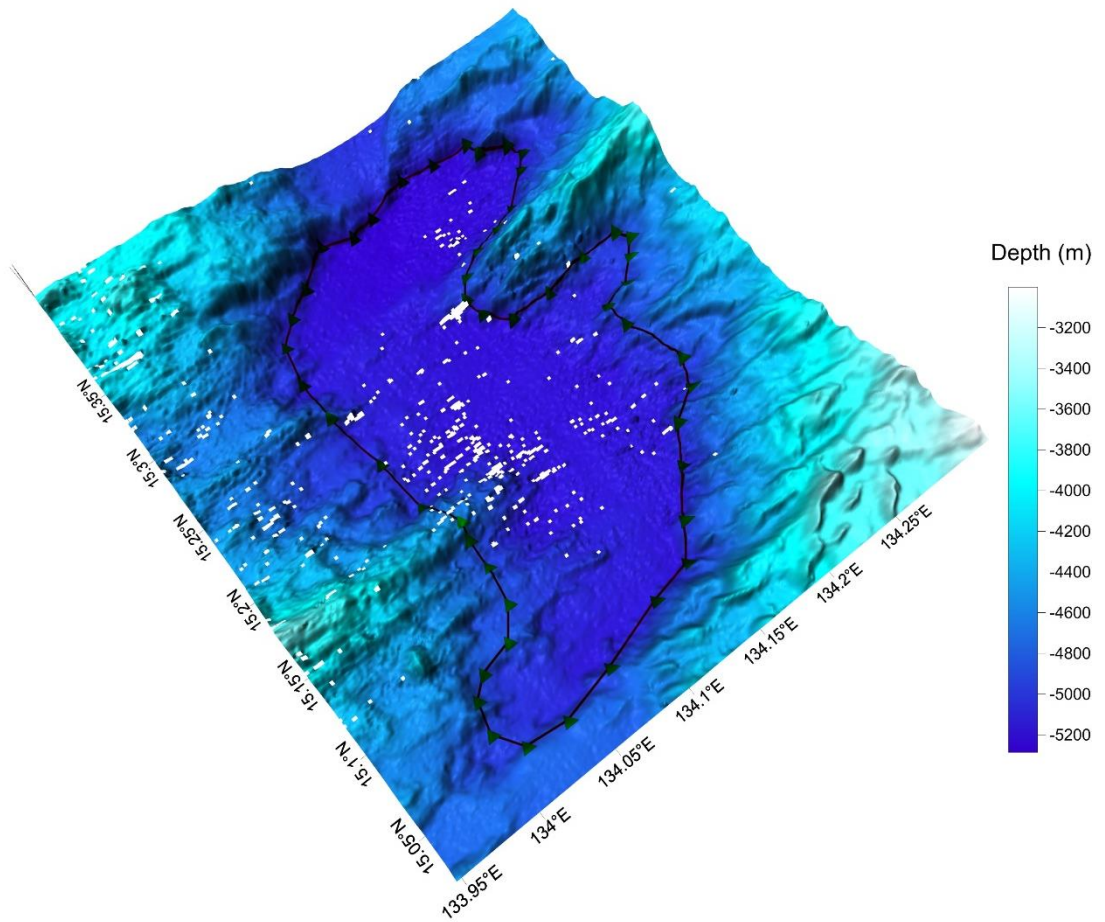


**Fig.2** Bathymetric map of Mangzhong Basin  
(Contours are in 200 m)

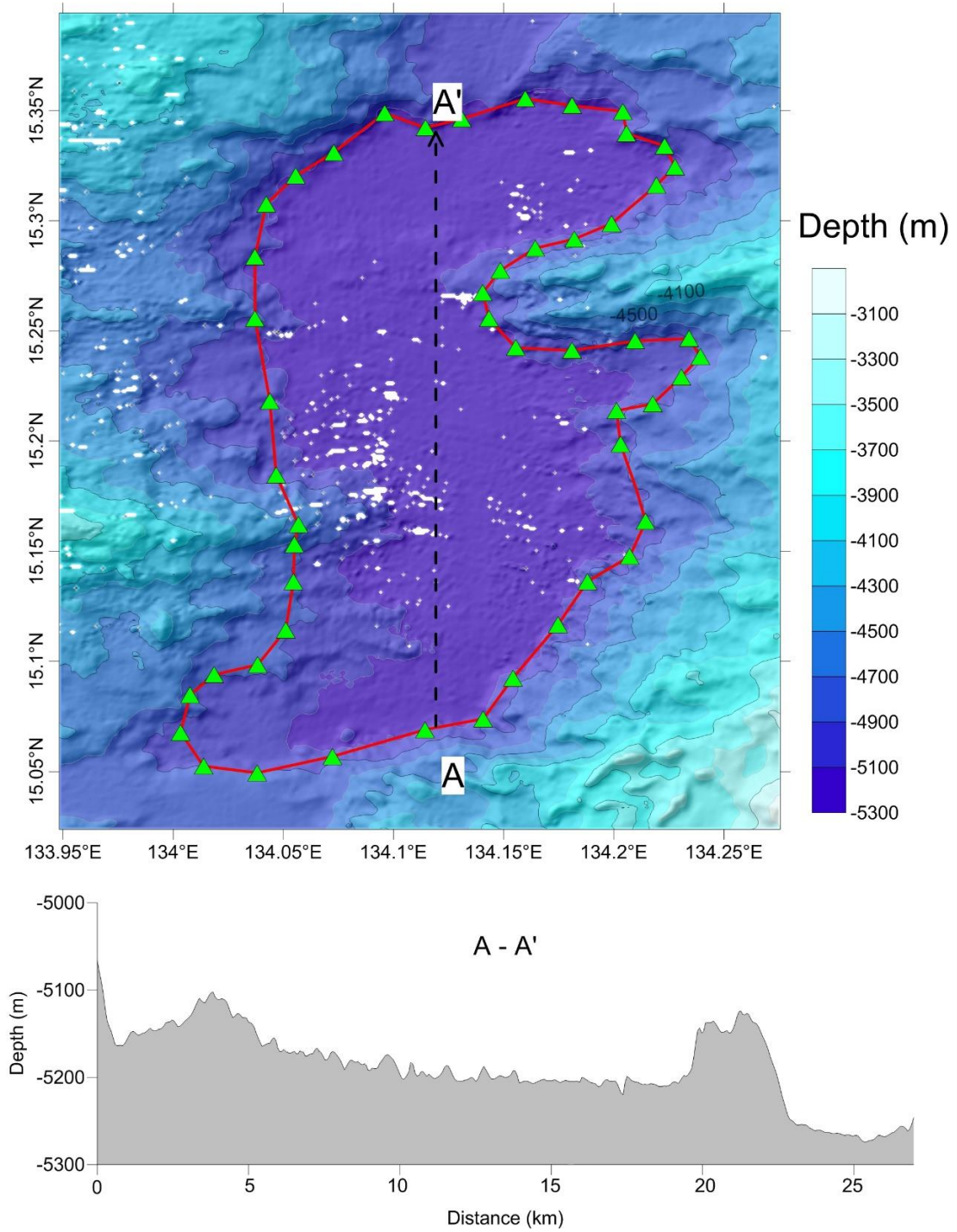


**Fig.3** Bathymetric map of Mangzhong Basin, showing track lines  
(Contours are in 200 m, blue lines are survey lines)





**Fig.4** 3-D topography map of Mangzhong Basin



**Fig.5** Bathymetric map and profile of Mangzhong Basin