

UNDERSEA FEATURE NAME PROPOSAL
(See IHO-IOC Publication B-6 and NOTE overleaf)

Note: The boxes will expand as you fill the form.

Name Proposed:	Xiongzhi Ridge	Ocean or Sea:	South Atlantic Ocean
-----------------------	----------------	----------------------	----------------------

Geometry that best defines the feature (Yes/No) :						
Point	Line	Polygon	Multiple points	Multiple lines*	Multiple polygons*	Combination of geometries*
		Yes				

* Geometry should be clearly distinguished when providing the coordinates below.

	Lat. (e.g. 63°32.6'N)	Long. (e.g. 046°21.3'W)
Coordinates:	24°15.2'S (Top)	13°21.0'W (Top)
	23°57.6'S (Bottom)	13°23.9'W (Bottom)
	23°59.1'S	13°25.3'W
	24°00.6'S	13°25.8'W
	24°02.6'S	13°26.0'W
	24°05.4'S	13°25.6'W
	24°07.6'S	13°25.2'W
	24°12.0'S	13°24.7'W
	24°15.6'S	13°24.2'W
	24°17.7'S	13°23.2'W
	24°20.2'S	13°23.0'W
	24°22.2'S	13°22.5'W
	24°24.3'S	13°21.8'W
	24°25.7'S	13°21.1'W
	24°26.7'S	13°20.2'W
	24°26.8'S	13°18.4'W
	24°24.1'S	13°16.7'W
	24°21.4'S	13°16.4'W
	24°14.9'S	13°17.6'W
	24°09.7'S	13°19.0'W
24°04.8'S	13°19.5'W	
24°02.8'S	13°20.6'W	
23°56.0'S	13°21.5'W	
23°57.6'S	13°23.9'W	

Feature Description:	Maximum Depth:	3130 m	Steepness :	
	Minimum Depth :	2270 m	Shape :	line
	Total Relief :	860 m	Dimension/Size :	60 km * 12 km

Associated Features:	This ridge is located in the South Atlantic Rise and the overlook plane shape is nearly long cylindrical.
-----------------------------	---

Chart/Map References:	Shown Named on Map/Chart:	
	Shown Unnamed on Map/Chart:	GEBCO 5.07
	Within Area of Map/Chart:	

Reason for Choice of Name (if a person, state how associated with the feature to be named):	The name is chosen from a poem named Beifeng in Shijing·Guofeng. Shijing is a collection of ancient Chinese Poems from 11 th century B.C. to
--	---

	6 th century B.C. "Cock-pheasants flush toward the sky, Cackling loudly as they fly". "Xiongzhi" expresses a wife missing her husband. This ridge has a shape much like a cock comb, so does get the name of "Xiongzhi".
--	---

Discovery Facts:	Discovery Date:	May, 2015
	Discoverer (Individual, Ship):	Chinese R/V Chukoehenao

Supporting Survey Data, including Track Controls:	Date of Survey:	May, 2015
	Survey Ship:	Chinese R/V Chukoehenao
	Sounding Equipment:	Multi-beam Echo Sounding System (SeaBat7150)
	Type of Navigation:	DGPS
	Estimated Horizontal Accuracy (nm):	≤0.08 nm
	Survey Track Spacing:	5 nm
	Supporting material can be submitted as Annex in analog or digital form: see Annex	

Proposer(s):	Name(s):	China Ocean Mineral Resources R&D Association (COMRA)
	Date:	July 1, 2017
	E-mail:	comra@comra.org
	Organization and Address:	Fuxingmenwai Street No.1, Xicheng District, Beijing, China
	Concurrer (name, e-mail, organization and address):	

Remarks:	The proposal has been reviewed and approved by Sub-Committee on Undersea Feature Names of China Committee on Geographical Names (CCUFN). No.1, Fuxingmenwai Street, Xicheng District, Beijing, China, 100860 heyunxu@sina.com
-----------------	---

NOTE : This form should be forwarded, when completed :

- a) **If the undersea feature is located inside the external limit of the territorial sea :-**
to your "National Authority for Approval of Undersea Feature Names" (see Publication B-6) or, if this does not exist or is not known, either to the IHO or to the IOC (see addresses below);
- b) **If at least 50 % of the undersea feature is located outside the external limits of the territorial sea :-**
to the IHO or to the IOC, at the following addresses :

International Hydrographic Organization (IHO) 4, Quai Antoine 1er B.P. 445 MC 98011 MONACO CEDEX Principality of MONACO Fax: +377 93 10 81 40 E-mail: info@iho.int Web: www.iho.int	Intergovernmental Oceanographic Commission (IOC) UNESCO Place de Fontenoy 75700 PARIS France Fax: +33 1 45 68 58 12 E-mail: info@unesco.org Web: http://ioc-unesco.org/
---	--

ANNEX

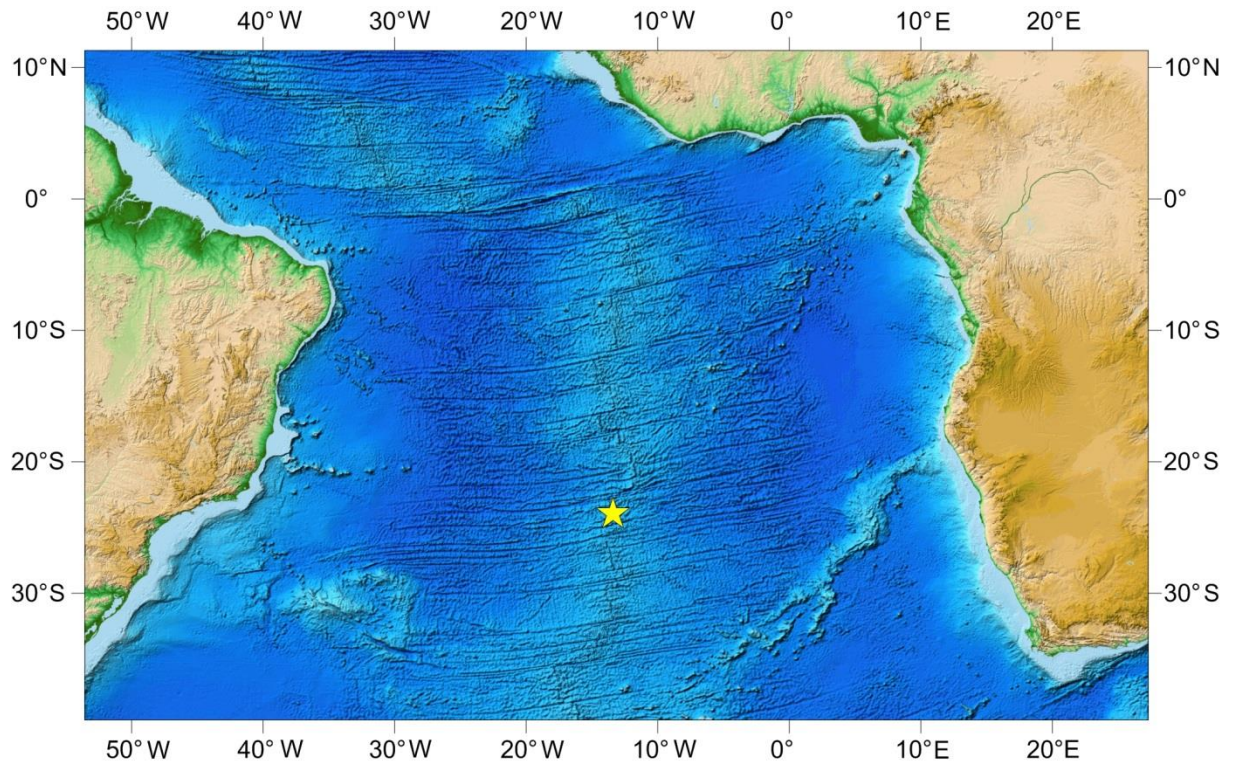


Fig. 1 Location of Xiongzi Ridge

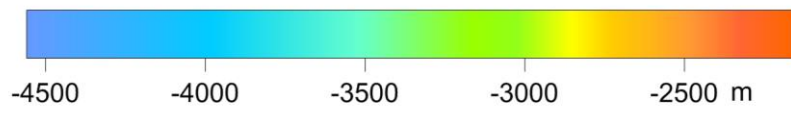
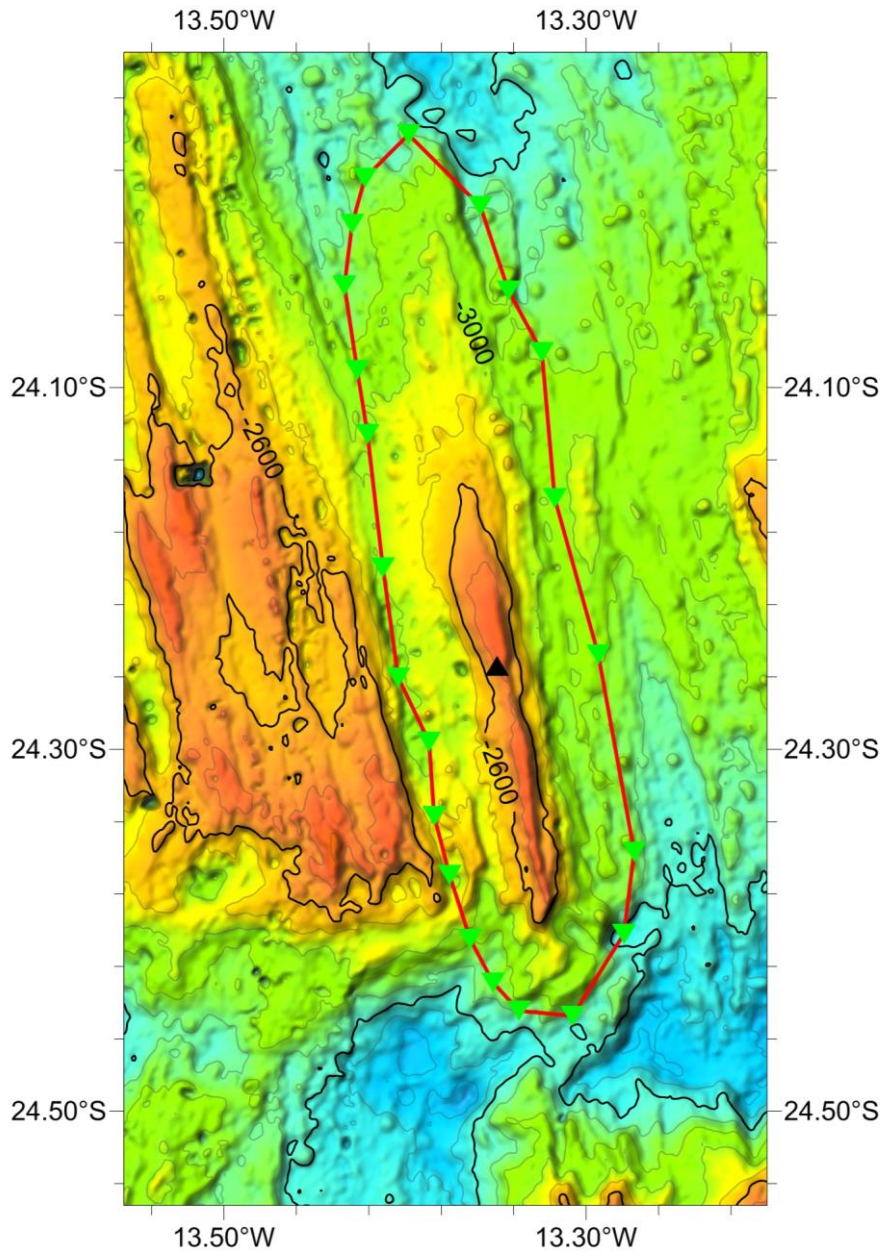


Fig. 2 Bathymetric map of Xiongzi Ridge (Contours are in 200 m)

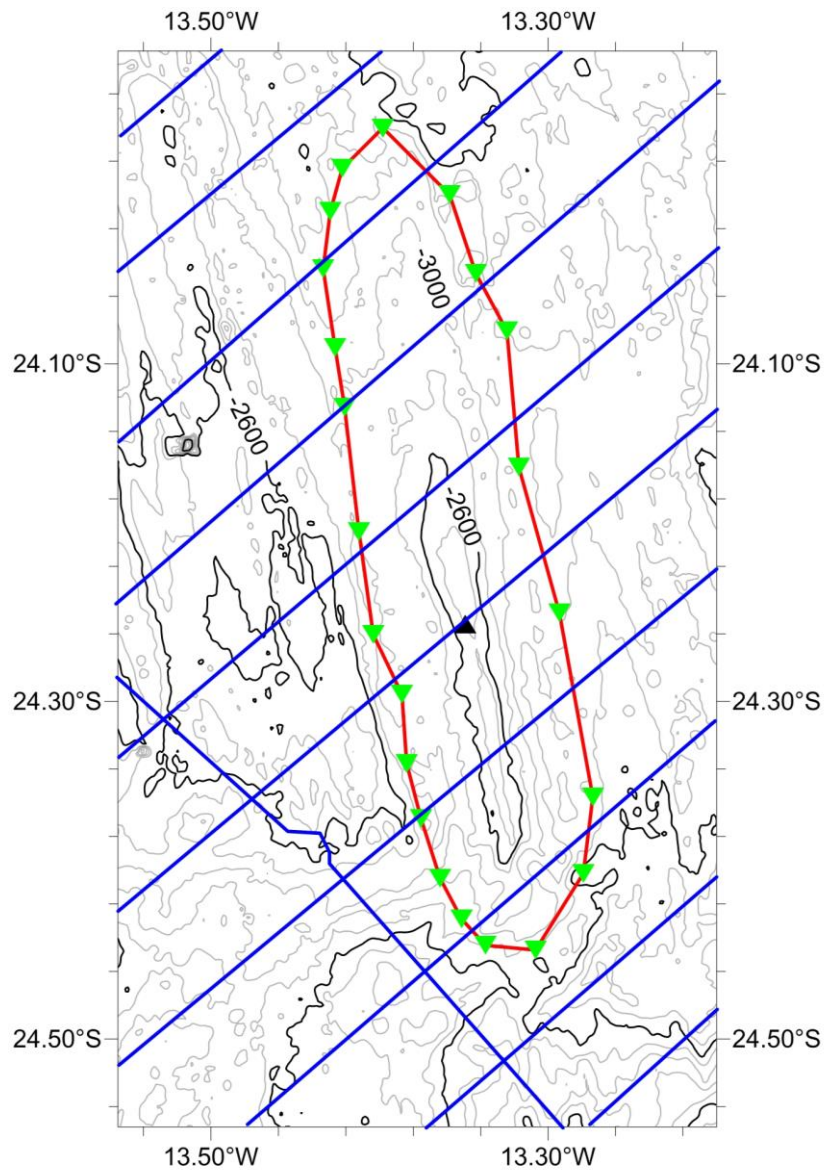


Fig. 3 Bathymetric and survey line map of Xiongzhong Ridge (Contours are in 200 m, blue ones are survey lines)

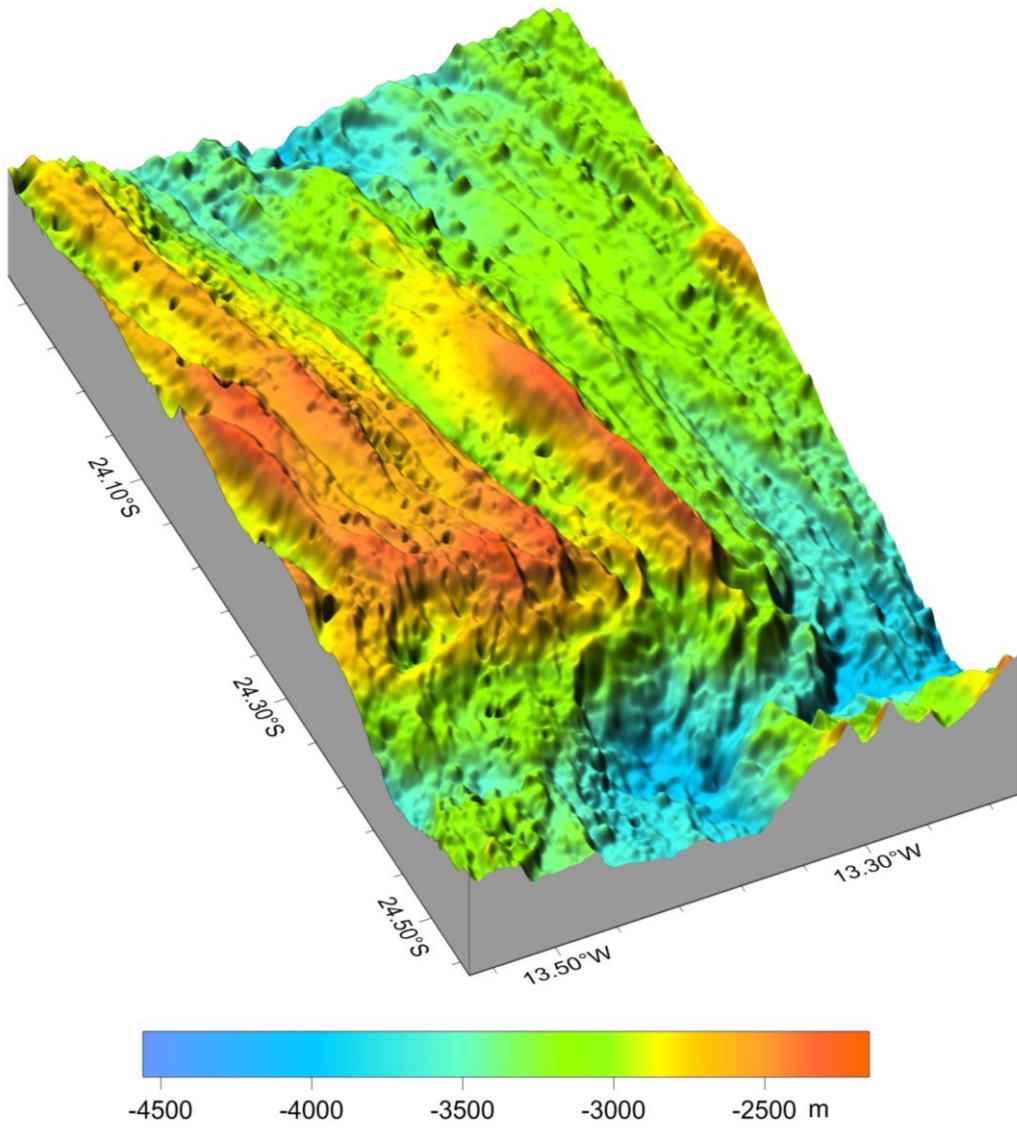


Fig. 4 3-D topography map of Xiongzi Ridge

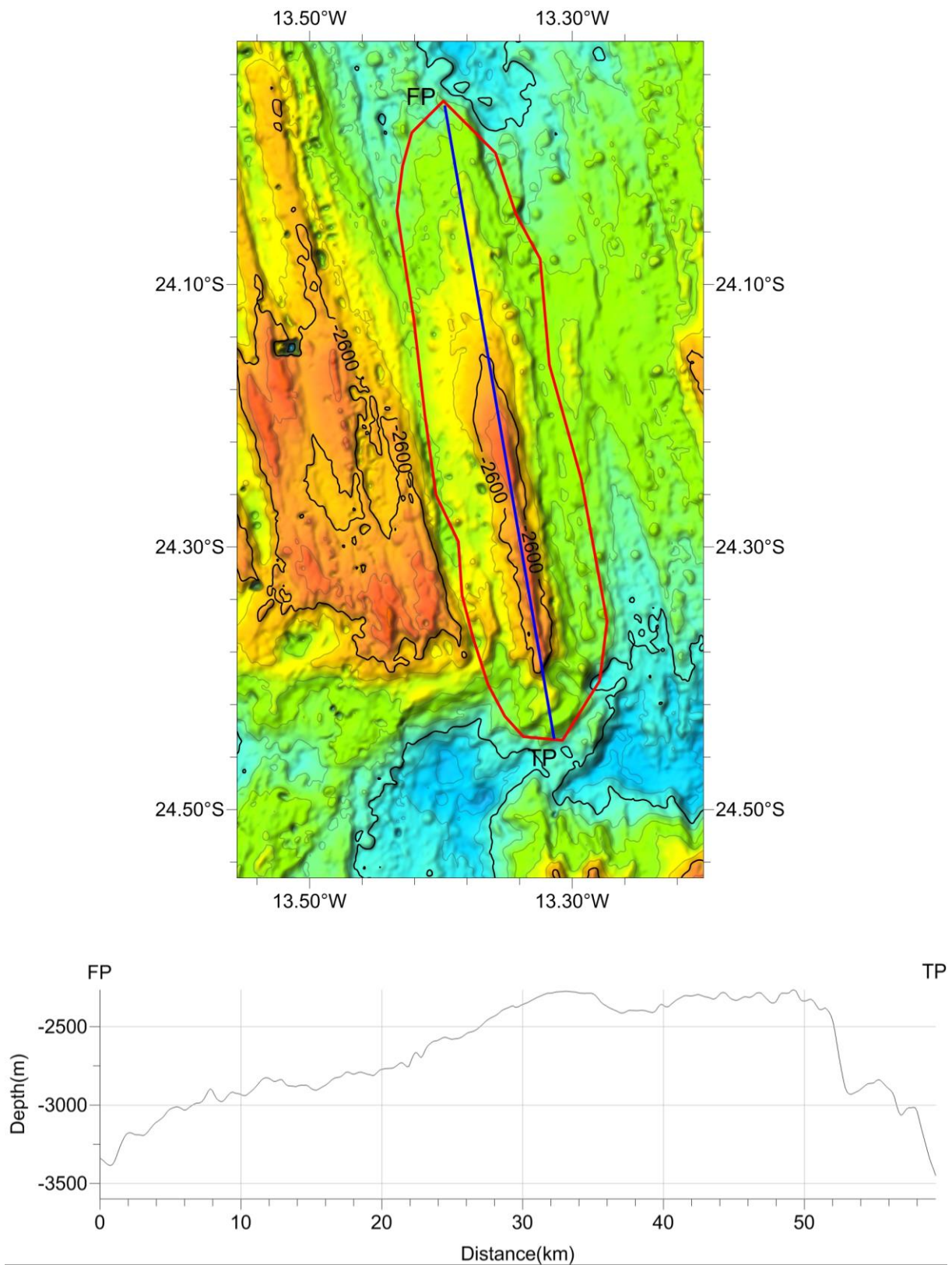


Fig. 5 profile map of Xiongzi Ridge