

UNDERSEA FEATURE NAME PROPOSAL
(See IHO-IOC Publication B-6 and NOTE overleaf)

Note: The boxes will expand as you fill the form.

Name Proposed:	Jiugao Guyot	Ocean or Sea:	Central Pacific Ocean
-----------------------	--------------	----------------------	-----------------------

Geometry that best defines the feature (Yes/No) :						
Point	Line	Polygon	Multiple points	Multiple lines*	Multiple polygons*	Combination of geometries*
		Yes				

* Geometry should be clearly distinguished when providing the coordinates below.

	Lat. (e.g. 63°32.6'N)	Long. (e.g. 046°21.3'W)
Coordinates:	20°09.1'N (Top)	172°03.0'E (Top)
	20°10.4'N (Bottom)	171°58.8'E (Bottom)
	20°06.9'N	171°59.1'E
	20°03.7'N	172°00.3'E
	20°03.1'N	172°03.1'E
	20°04.6'N	172°05.6'E
	20°07.1'N	172°07.4'E
	20°10.3'N	172°07.3'E
	20°13.1'N	172°05.7'E
	20°15.0'N	172°03.2'E
	20°15.1'N	172°00.8'E
	20°12.2'N	171°59.7'E
	20°10.4'N	171°58.8'E

Feature Description:	Maximum Depth:	2600 m	Steepness :	
	Minimum Depth :	1514 m	Shape :	
	Total Relief :	1086 m	Dimension/Size :	21.5 km * 15 km

Associated Features:	Jiugao Guyot has an NS extending overlook plane shape. It is located in the west of the Central Pacific Seamount Area, and at 220km west to the Ewing Seamount. The top platform is flat while the slopes are steep.
-----------------------------	----------------------------------------------------------------------------------------------------------------------------------------------------------------------------------------------------------------------

Chart/Map References:	Shown Named on Map/Chart:	
	Shown Unnamed on Map/Chart:	GEBCO 5.06
	Within Area of Map/Chart:	

Reason for Choice of Name (if a person, state how associated with the feature to be named):	Jiugao comes from a poem named Heming in Shijing·Xiaoya. Shijing is a collection of ancient Chinese Poems from 11 th century B.C. to 6 th century B.C. Heming is a scenic and lyric poetry, poem depicts a landscape painting by a combination of green mountain, deep river, flying crane, grey trees and so on. This guyot is named "Jiugao", means the tortuous and far-reaching swamp in the garden.
----------------------------------------------------------------------------------------------------	--------------------------------------------------------------------------------------------------------------------------------------------------------------------------------------------------------------------------------------------------------------------------------------------------------------------------------------------------------------------------------------------------------------------------------

Discovery Facts:	Discovery Date:	Aug. 2001
	Discoverer (Individual, Ship):	Chinese R/V Dayang Yihao

Supporting Survey Data, including Track Controls:	Date of Survey:	Aug. 2001
	Survey Ship:	Chinese R/V Dayang Yihao
	Sounding Equipment:	Multi-beam Echo Sounding System (Seabeam2112.360)
	Type of Navigation:	Oministar DGPS
	Estimated Horizontal Accuracy (nm):	0.0053 sea mile
	Survey Track Spacing:	5 nm
	Supporting material can be submitted as Annex in analog or digital form: see Annex	

Proposer(s):	Name(s):	China Ocean Mineral Resources R&D Association (COMRA)
	Date:	July 1, 2017
	E-mail:	jin@comra.org
	Organization and Address:	Fuxingmenwai Street No.1, Beijing, China China Ocean Mineral Resources R&D Association
	Concurrer (name, e-mail, organization and address):	

Remarks:	The proposal has been reviewed and approved by Sub-Committee on Undersea Feature Names of China Committee on Geographical Names (CCUFN). And the proposal has also been published in "Chinese Gazetteer of Undersea Features on the International Seabed(2016)". No.1, Fuxingmenwai Street, Xicheng District, Beijing, China, 100860 heyunxu@sina.com
-----------------	----------------------------------------------------------------------------------------------------------------------------------------------------------------------------------------------------------------------------------------------------------------------------------------------------------------------------------------------------------------

NOTE : This form should be forwarded, when completed :

- a) **If the undersea feature is located inside the external limit of the territorial sea** :-
to your "National Authority for Approval of Undersea Feature Names" (see Publication B-6) or, if this does not exist or is not known, either to the IHO or to the IOC (see addresses below);
- b) **If at least 50 % of the undersea feature is located outside the external limits of the territorial sea** :-
to the IHO or to the IOC, at the following addresses :

International Hydrographic Organization (IHO) 4, Quai Antoine 1er B.P. 445 MC 98011 MONACO CEDEX Principality of MONACO Fax: +377 93 10 81 40 E-mail: info@iho.int Web: www.iho.int	Intergovernmental Oceanographic Commission (IOC) UNESCO Place de Fontenoy 75700 PARIS France Fax: +33 1 45 68 58 12 E-mail: info@unesco.org Web: http://ioc-unesco.org/
-----------------------------------------------------------------------------------------------------------------------------------------------------------------------------------------------------------------------------------------------------------------------------	------------------------------------------------------------------------------------------------------------------------------------------------------------------------------------------------------------------------------------------------------------------------

ANNEX

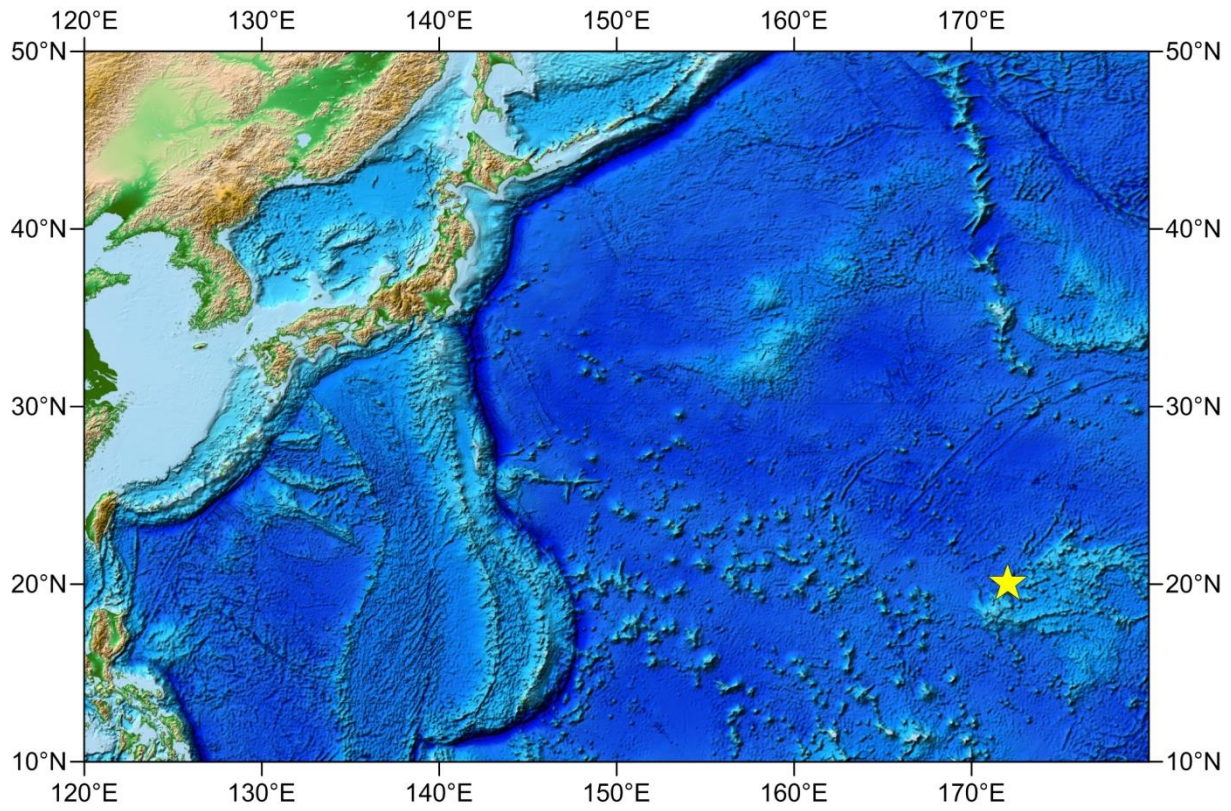


Fig. 1 Location of Jiugao Guyot

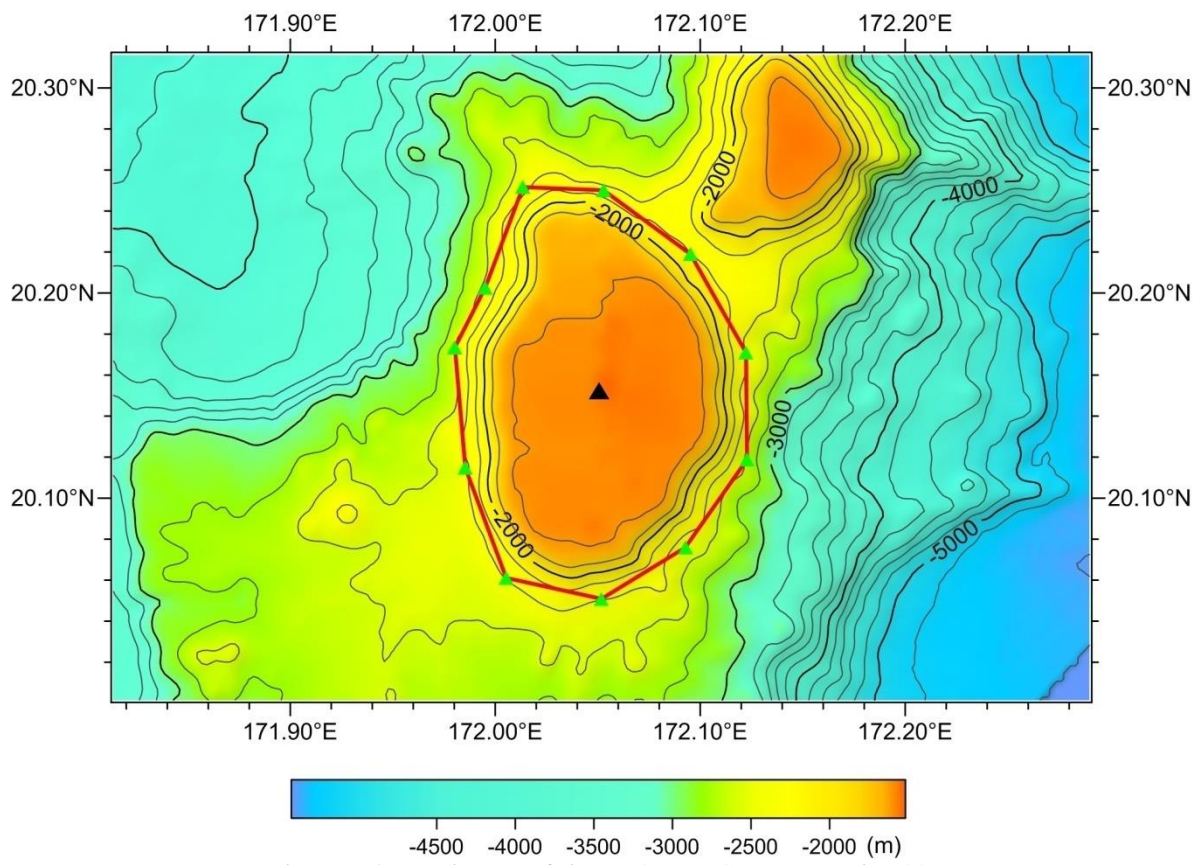


Fig. 2 Bathymetric map of Jiugao Guyot (Contours are in 200 m)

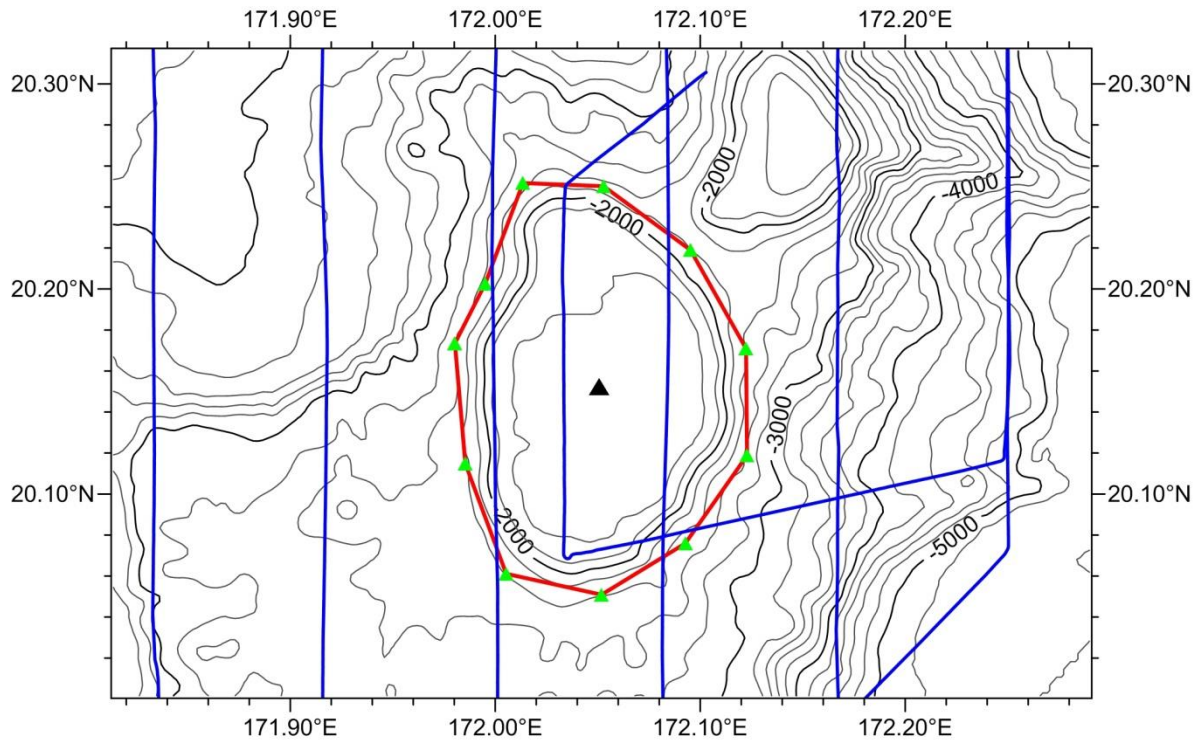


Fig. 3 Bathymetric and survey line map of Jiugao Guyot (Contours are in 200 m, blue ones are survey lines)

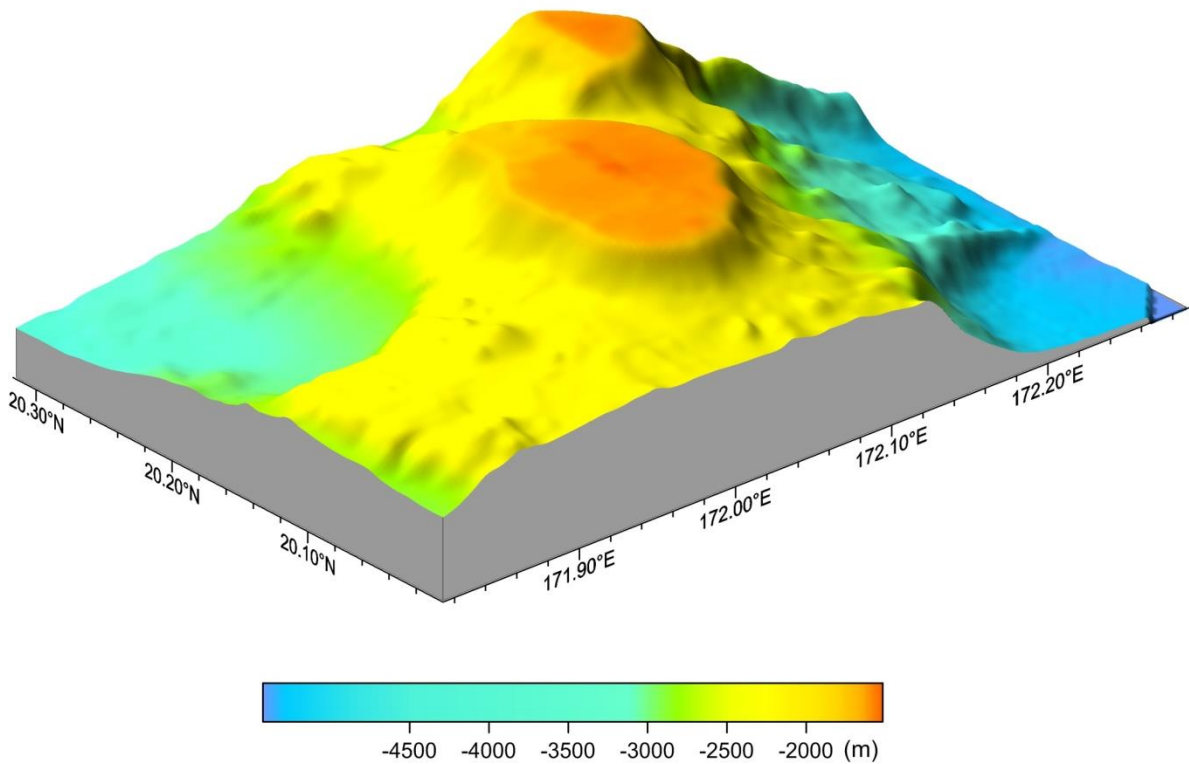


Fig. 4 3-D topography map of Jiugao Guyot

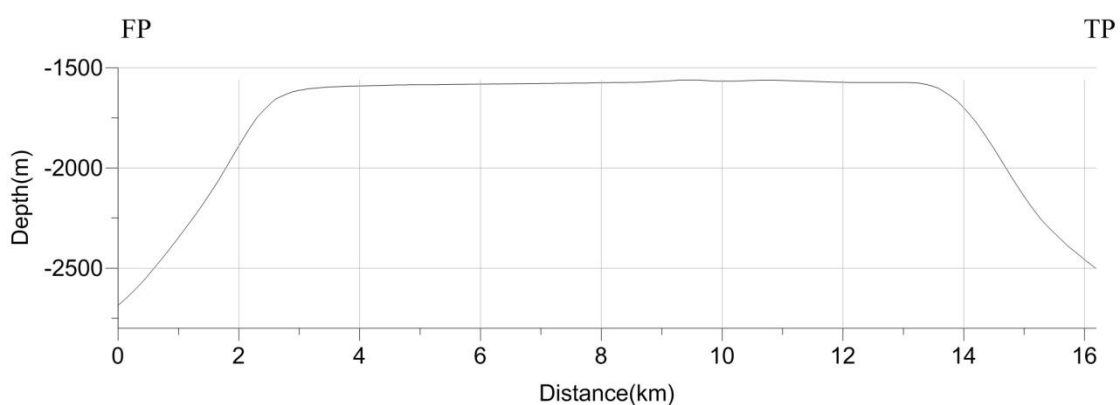
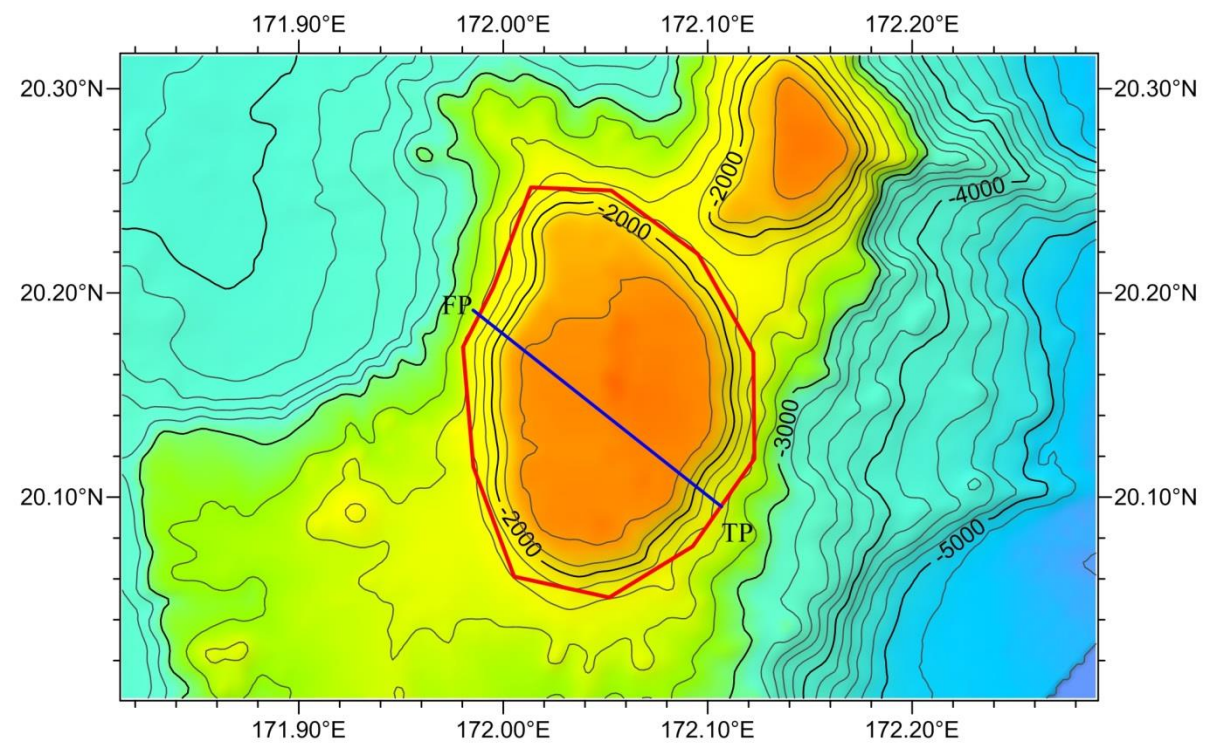


Fig. 5 profile map of Jiugao Guyot